

Past Week Status

	Th 7/14	W 7/13	Tu 7/12	M 7/11	Su 7/10	Sa 7/9	F 7/8
Daily new cases	8,535	6,530	5,170	3,710*	6,099*	8,349	6,416
Daily deaths	14	15	14	9*	12*	18	18
Daily hospitalizations of confirmed cases	1,202	1,170	1,153	1,079	1,068	1,014	1,021
Daily positivity rate (7-day avg) ^	17.5%	16.8%	16.3%	15.5%	15.6%	15.5%	15.3%
Daily case rate (7-day avg)**	62	58	56	53	52	52	49



covid19.lacounty.gov

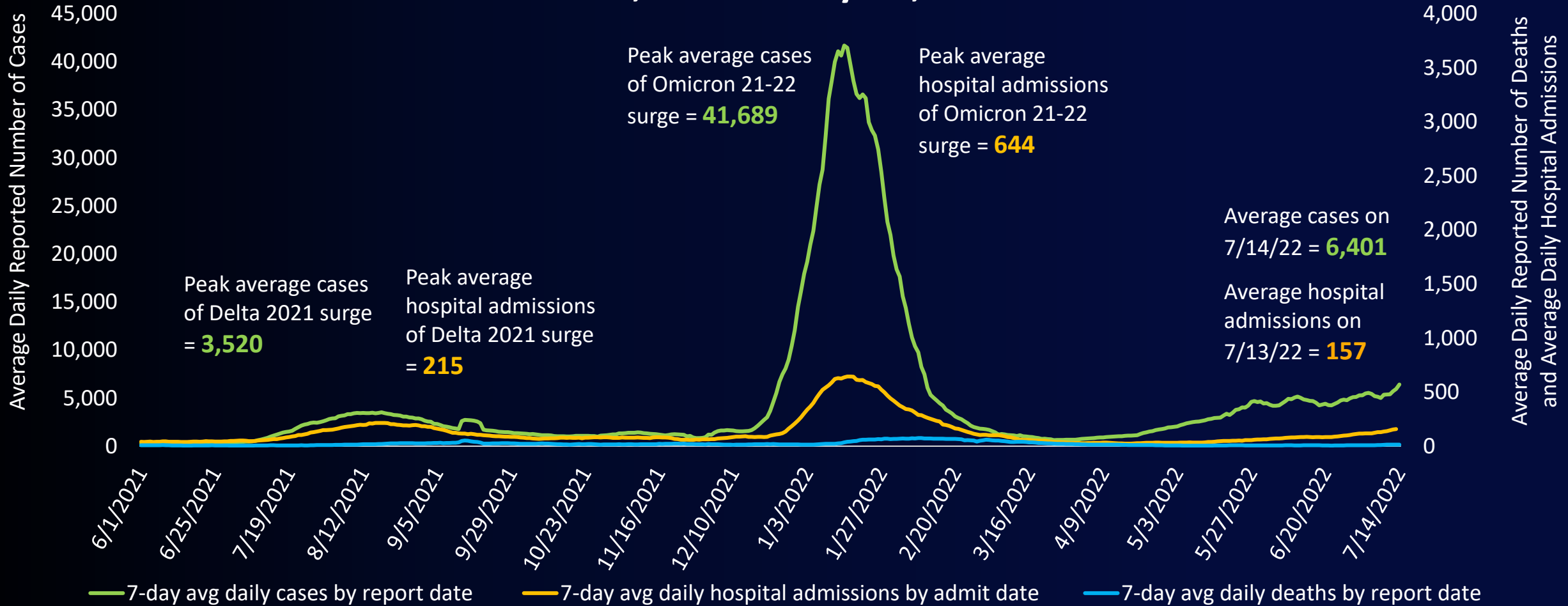
7/14/2022

*Number reflects an undercount due to a lag from weekend reporting.

^ Daily positivity rates do not include data from Long Beach and Pasadena

** Rate is per 100,000 residents

7-Day Average Daily COVID-19 Cases and Deaths by Report Date* and Daily Hospital Admissions by Admit Date June 1, 2021 – July 14, 2022



covid19.lacounty.gov

7/14/2022

*Case and death values include data from Long Beach and Pasadena.

CDC COVID-19 Community Levels

New Cases (per 100,000 people in last 7 days)	Indicators	Low	Medium	High	LA County Current Values <u>New Cases:</u> 370/100,000 (as of 7/13/22)
Fewer than 200	New COVID-19 admissions per 100,000 population (7-day total)	<10.0	10.0-19.9	≥20.0	NA
	Proportion of staffed inpatient beds occupied by COVID-19 patients (7-day average)	<10.0%	10.0-14.9%	≥15.0%	NA
200 or more	New COVID-19 admissions per 100,000 population (7-day total)	NA	<10.0	≥10.0	10.5
	Proportion of staffed inpatient beds occupied by COVID-19 patients (7-day average)	NA	<10.0%	≥10.0%	5.4%

The COVID-19 community level is determined by the higher of the inpatient beds and new admissions indicators, based on the current level of new cases per 100,000 population in the past 7 days.



[covid19.lacounty.gov](https://www.covid19.lacounty.gov)

7/14/2022

LA County Early Alert Signals

Indicator	Thresholds			LA County Current Values
	Low Concern	Medium Concern	High Concern	
Percent of specimens sequenced that are identified as a new variant of concern (including subvariants) (based on WHO designation) ¹ <i>Currently tracking: BA.4 and BA.5 combined</i>	< 10%	10%-20%	> 20%	62%
7-day average percent of Emergency Department encounters classified as coronavirus-related ²	< 5%	5%-10%	> 10%	10%
7-day cumulative age-adjusted case rate for the lowest income areas (30-100% area poverty) ²	< 100 per 100,000	100-200 per 100,000	> 200 per 100,000	272 per 100,000
Number of sewer systems with a two-fold or greater increase in wastewater SARS-CoV-2 concentration ³	0	1-2	≥ 3	0
Number of new outbreaks in skilled nursing facilities in past 7 days ⁴	≤ 10	11-20	> 20	41
Number of new outbreaks in TK-12 school classrooms in past 7 days	≤ 7	8-14	≥ 15	N/A
Number of new outbreaks in PEH settings in past 7 days ⁴	≤ 10	11-20	> 20	12
Number of worksite cluster reports in past 7 days ⁴	< 100	100-300	> 300	371

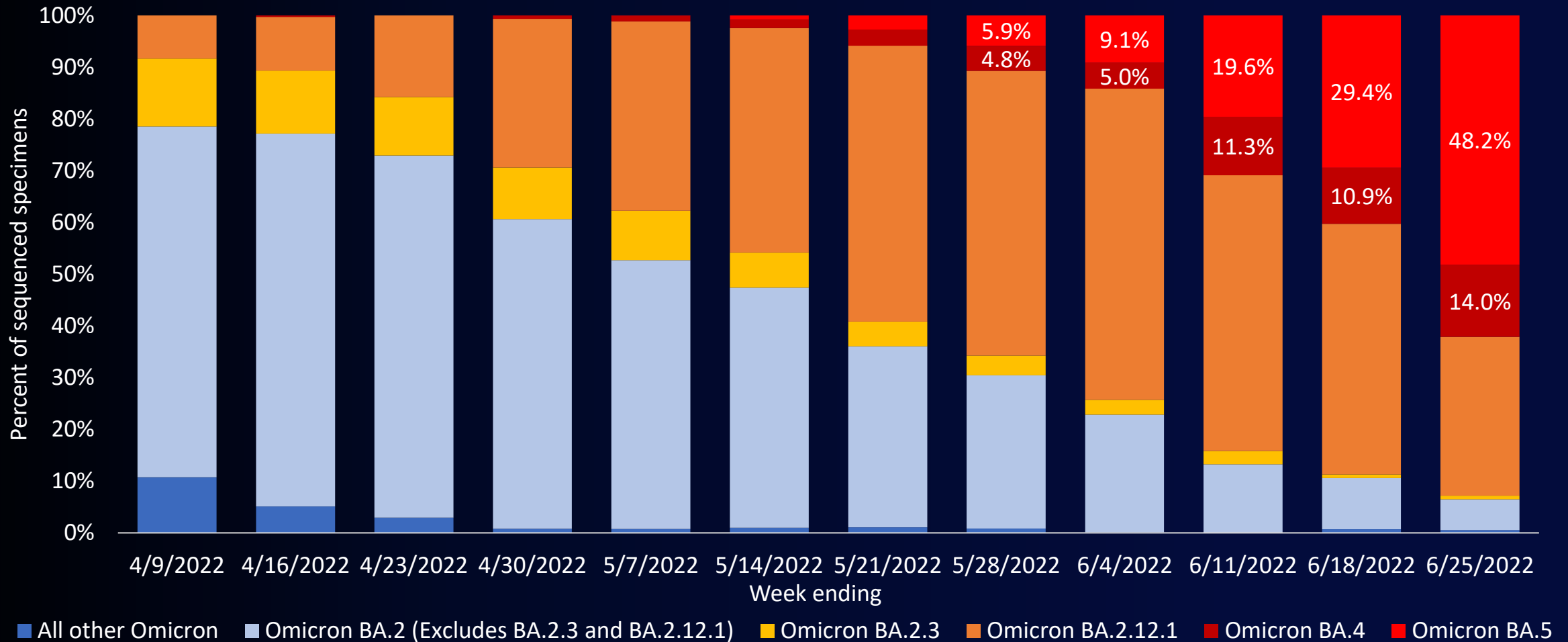


covid19.lacounty.gov

7/14/2022

- 1 Current 7-day period is 6/19/22 – 6/25/22
- 2 Current 7-day period is 7/4/22 – 7/10/22
- 3 Current 10-day period is 7/3/22 – 7/12/22
- 4 Current 7-day period is 7/6/22 – 7/12/22

SARS-CoV-2 Variants as a Percentage of All Specimens Sequenced for Baseline Variant Surveillance

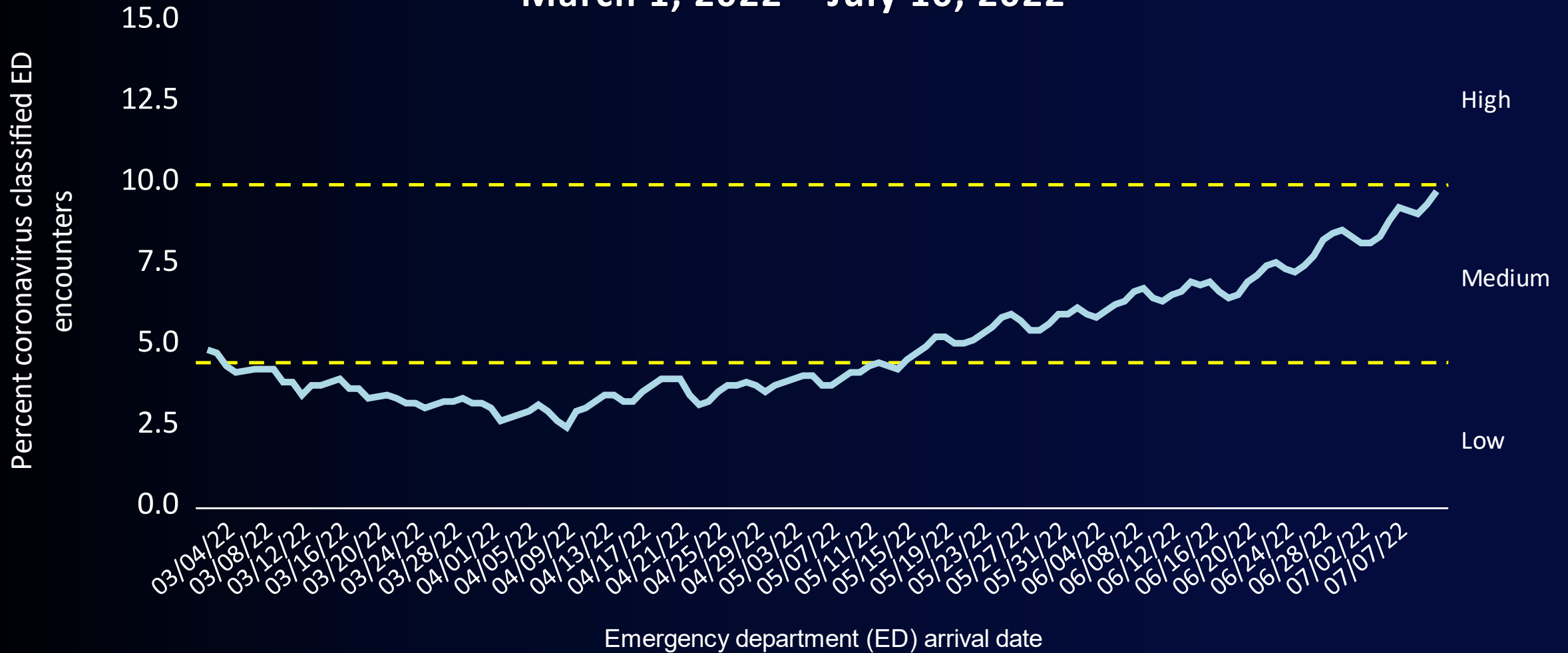


covid19.lacounty.gov

7/14/2022

*Includes descendant lineages (sub-lineages)

7-Day Average Percent of Emergency Department (ED) Encounters Classified as Coronavirus-Related March 1, 2022 – July 10, 2022

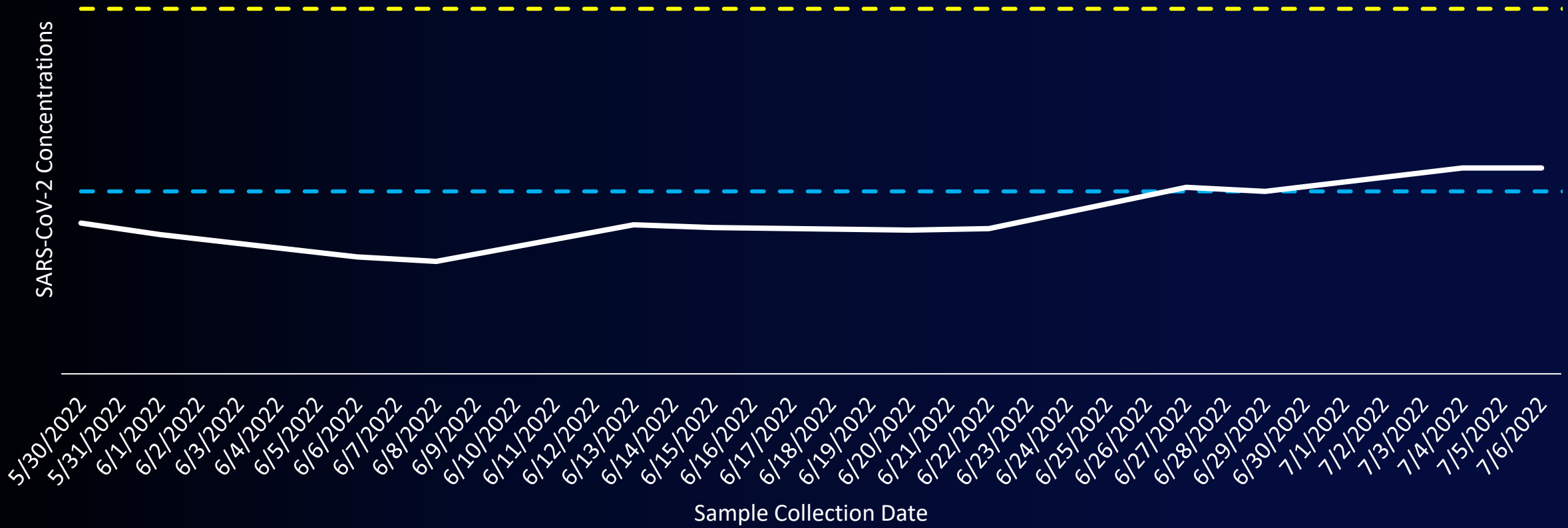


covid19.lacounty.gov

7/14/2022

Las Virgenes Municipal Water District SARS-CoV-2 Wastewater Concentration

— Average from 14 Days Ago — 10-Day Rolling Average - - - Twice Average from 14 Days ago



[covid19.lacounty.gov](https://www.covid19.lacounty.gov)

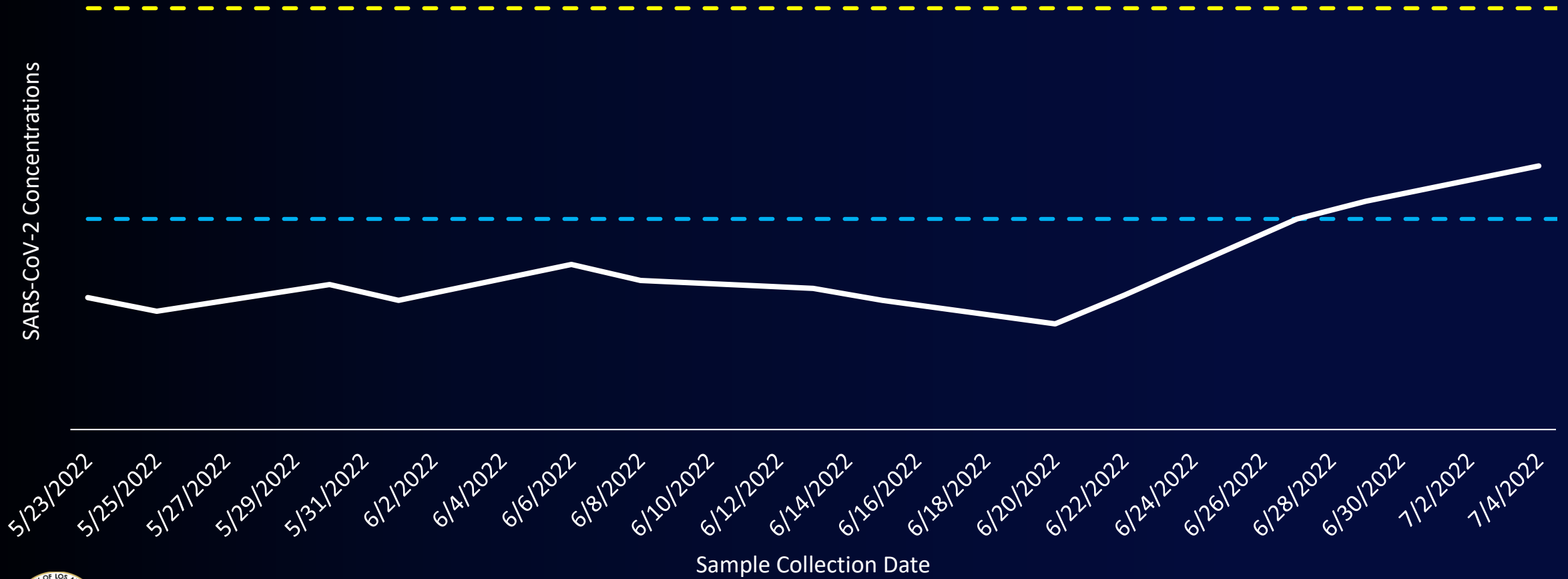
7/14/2022

Data from CDPH California Surveillance of Wastewater Systems (Cal-SuWers) Network

Los Angeles County Sanitation Districts (Lancaster) SARS-CoV-2 Wastewater Concentration

— Average from 14 Days Ago — 10-Day Rolling Average - - - Twice Average from 14 Days ago

SARS-CoV-2 Concentrations



Sample Collection Date



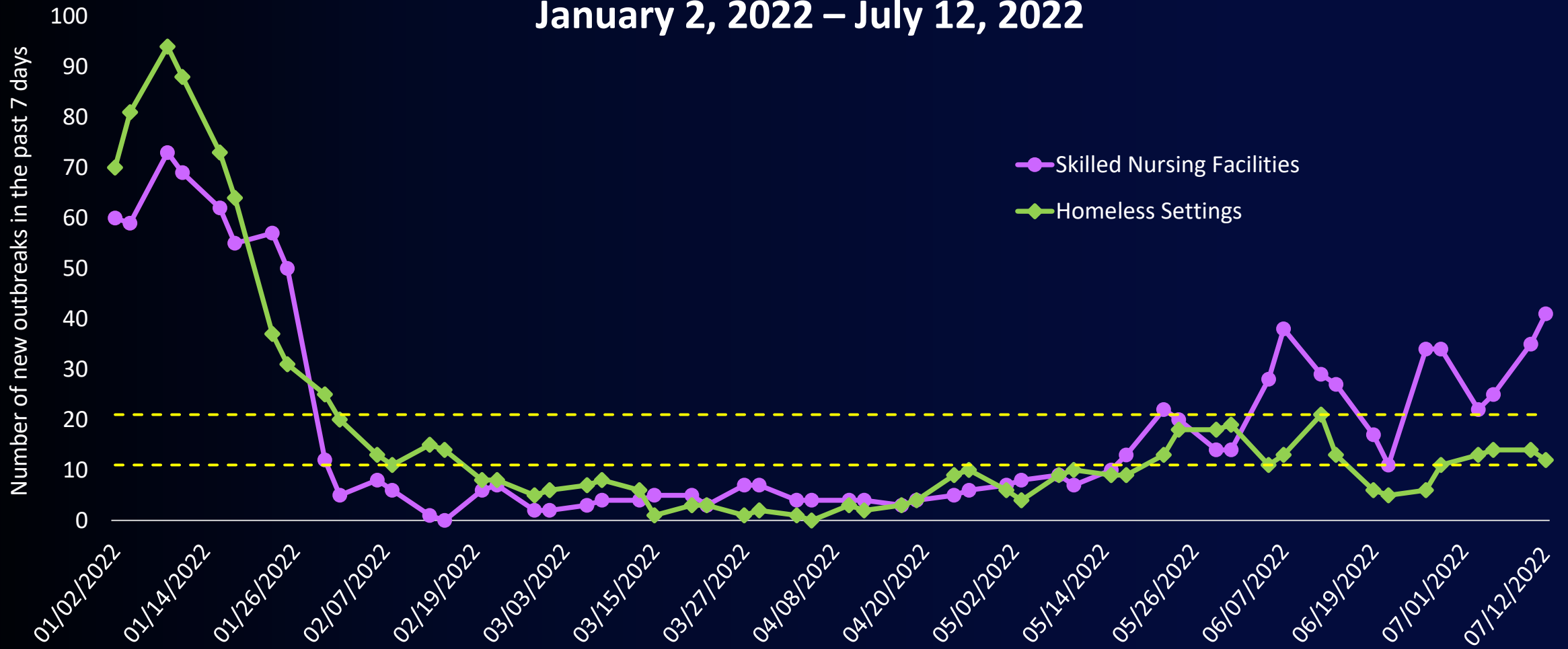
covid19.lacounty.gov

7/14/2022

Data from CDPH California Surveillance of Wastewater Systems (Cal-SuWers) Network

New Outbreaks in Skilled Nursing Facilities and Homeless Settings in the Past 7 Days

January 2, 2022 – July 12, 2022

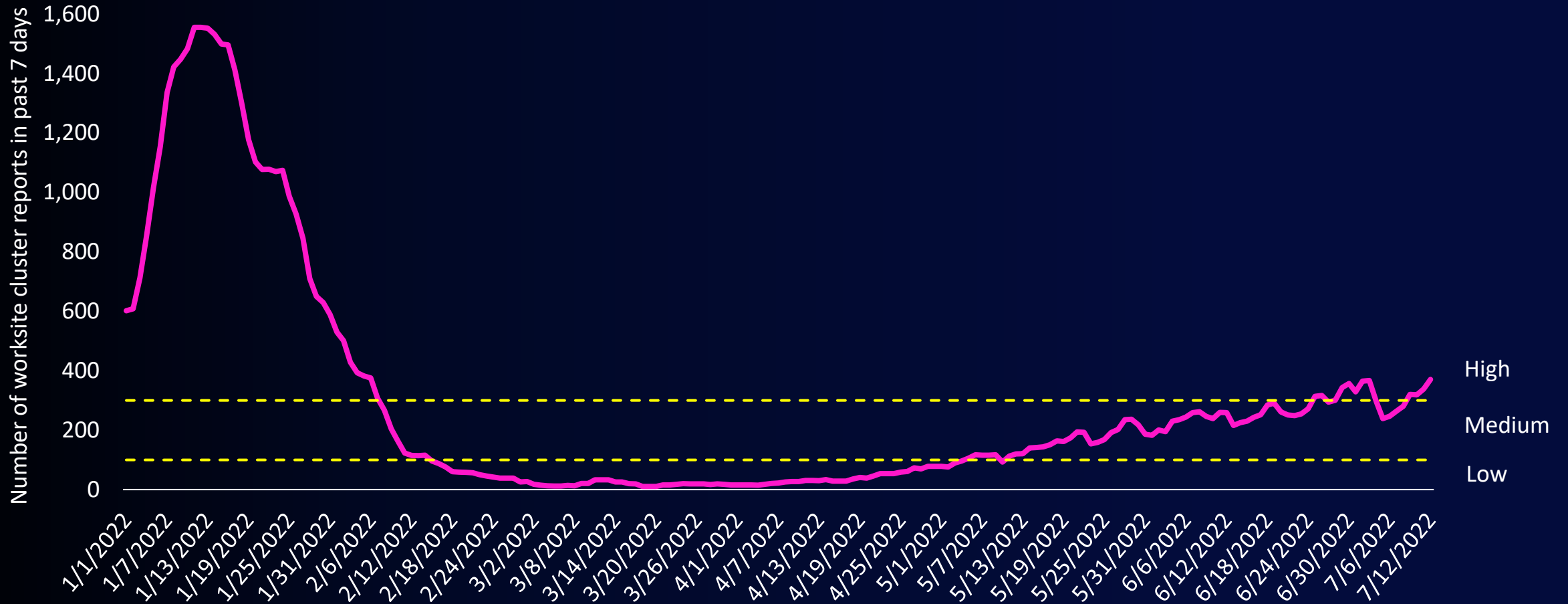


covid19.lacounty.gov

7/14/2022

New Worksite Cluster Reports* in Past 7 Days

January 1, 2022 – July 12, 2022



covid19.lacounty.gov

7/14/2022

*Worksite clusters are 3 or more cases within 14 days as reported by an employer. Worksite clusters can represent outbreaks or non-outbreaks and, if there are additional cases, can be multiple reports of the same site.

COVID-Associated Deaths Compared to Deaths from Select Other Causes

COVID-Associated Deaths Per Year

Year	# of Deaths
2020	11,894
2021	14,462
2022 (through July 14)	4,427
Total	30,783

Average Annual Deaths Due to Select Other Causes

Cause	# of Deaths
Influenza ¹	1,464
Measles ²	0
Accidental Drug Overdose ²	2,039
Motor Vehicle Accidents ²	890

¹ Data is a modeled estimate and is not an exact count. Average annual deaths was calculated by averaging the number of deaths per influenza season from the 2013-2014 influenza season to the 2017-2018 influenza season.

² Average annual deaths was calculated by averaging the number of deaths in 2019 and 2020.



Strategies for reducing illness severity and death

- Vaccinations
- Boosters
- Therapeutics

An effective mitigation plan must include strategies for reducing illness severity and death AND strategies for reducing spread

Strategies for reducing disease spread

- Masking
- Testing



30-Day Age-Adjusted Rate Ratios of Cases, Hospitalizations, and Deaths per 100,000 by Vaccination Status, Ages 5+

	Unvaccinated
	to
	Fully vaccinated
Cases ¹	1.6
Hospitalizations ¹	4.1
Deaths ²	7.4



covid19.lacounty.gov

7/14/2022

Fully vaccinated includes those with and without booster

¹ Data reflects the 30-day period ending 6/28/22

² Data reflects the 30-day period ending 6/21/22

Hospitalization and Death Rates (per 100,000) by Vaccination Status and Area Poverty

	<10% Area Poverty	10-20% Area Poverty	20-30% Area Poverty	30-100% Area Poverty
Hospitalizations¹				
Fully vaccinated	26.5	31.8	32.5	38
Unvaccinated	34.6	94.4	206.2	398.3
Deaths²				
Fully vaccinated	2.4	3.3	3.1	4
Unvaccinated	6.1	15.2	50.7	58.8



Masking and Testing Both Lower Risk

Universal Indoor masking

- *Source control* – masking by infected people reduces the amount of virus released into the air:



- *Individual protection* – People wearing a mask are protected from inhaling virus

Testing before gatherings

- You can feel fine and still have COVID and infect others
- Get tested before gathering
- If positive: stay home
- Reduces likelihood of viral transmission or outbreak at gathering



COVID
+

Stay home and do not attend gathering if you test positive



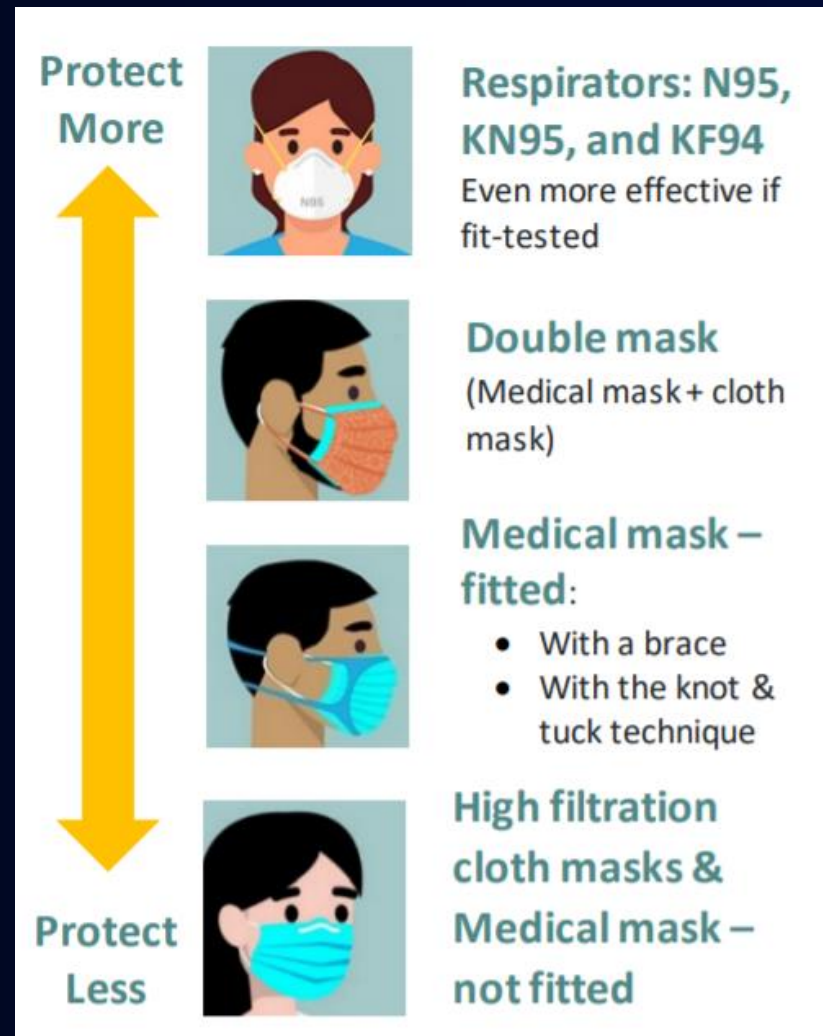
covid19.lacounty.gov

7/14/2022

ph.lacounty.gov/masks

ph.lacounty.gov/COVIDtests

Which masks are the best at preventing spread?



Indoor Masking Safety Measures

Ages 2 and older

Current indoor mask requirement

- ✓ Healthcare settings
- ✓ Public transit, transit hubs
- ✓ Long-term care settings
- ✓ Shelters and cooling centers
- ✓ Correctional facilities
- ✓ When required by a business or employer
- ✓ Outbreaks at worksites
- ✓ During the 10 days after a COVID diagnosis or exposure

Additional Indoor mask requirement after LA County in High COVID-19 Community Level for 2 consecutive weeks

- ✓ Shared office space
- ✓ Manufacturing
- ✓ Retail
- ✓ Indoor event spaces
- ✓ Indoor areas in restaurants/bars
- ✓ Indoor areas at children's programs
- ✓ Indoor areas in educational settings: early childhood care, summer school, higher education

ph.lacounty.gov/masks



covid19.lacounty.gov

7/14/2022