

Current Status

Deaths Reported Today	11
Total Deaths	24,525
Cases Reported Today	839
Total Cases	1,254,354
Currently Hospitalized	296
Total People Tested	7,083,908
Daily test positivity rate	2.5%
7-day daily average case rate*	3.47 cases/100,000

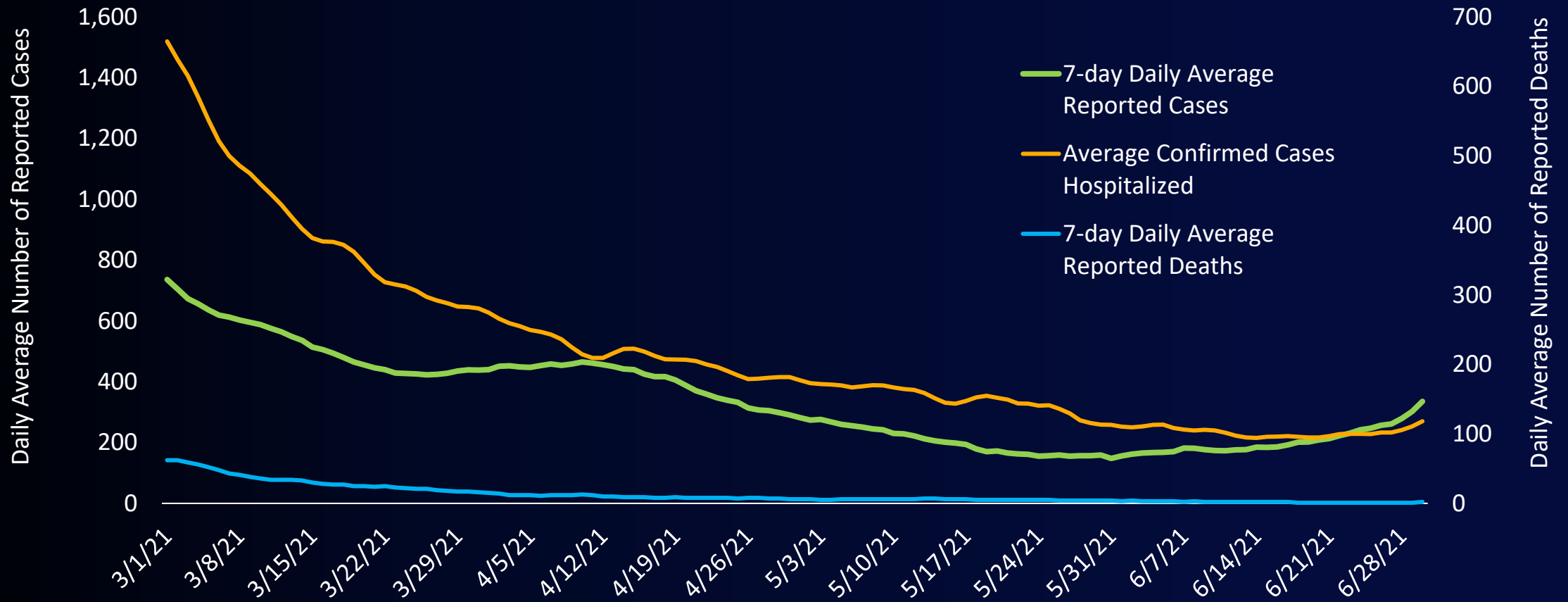
*As of 06/30/2021



covid19.lacounty.gov

7/8/2021

Number of COVID-19 Cases and Hospitalizations by Episode Date and Deaths by Date of Death March 1 – June 30, 2021



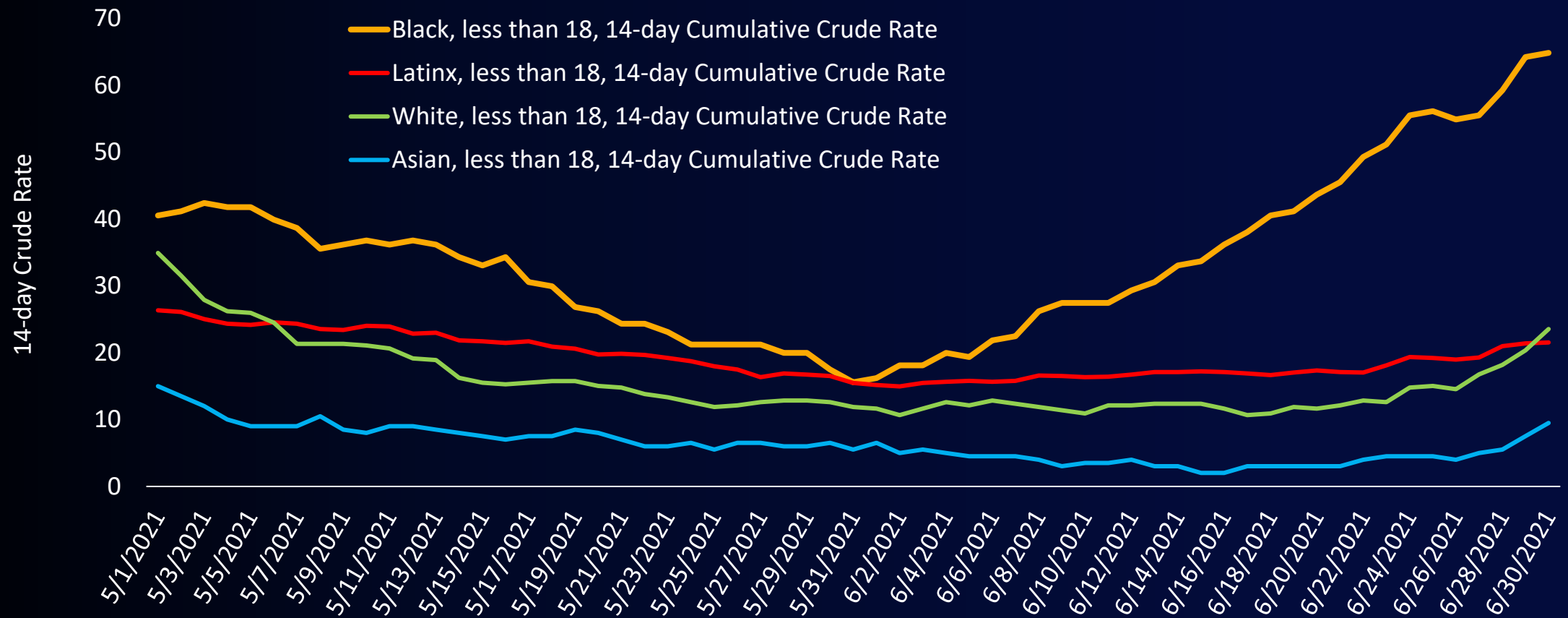
Age-Adjusted Case, Hospitalization, and Death Rates per 100,000 People by Race and Ethnicity

Over Two-Week Periods ending May 29 and June 26, 2021

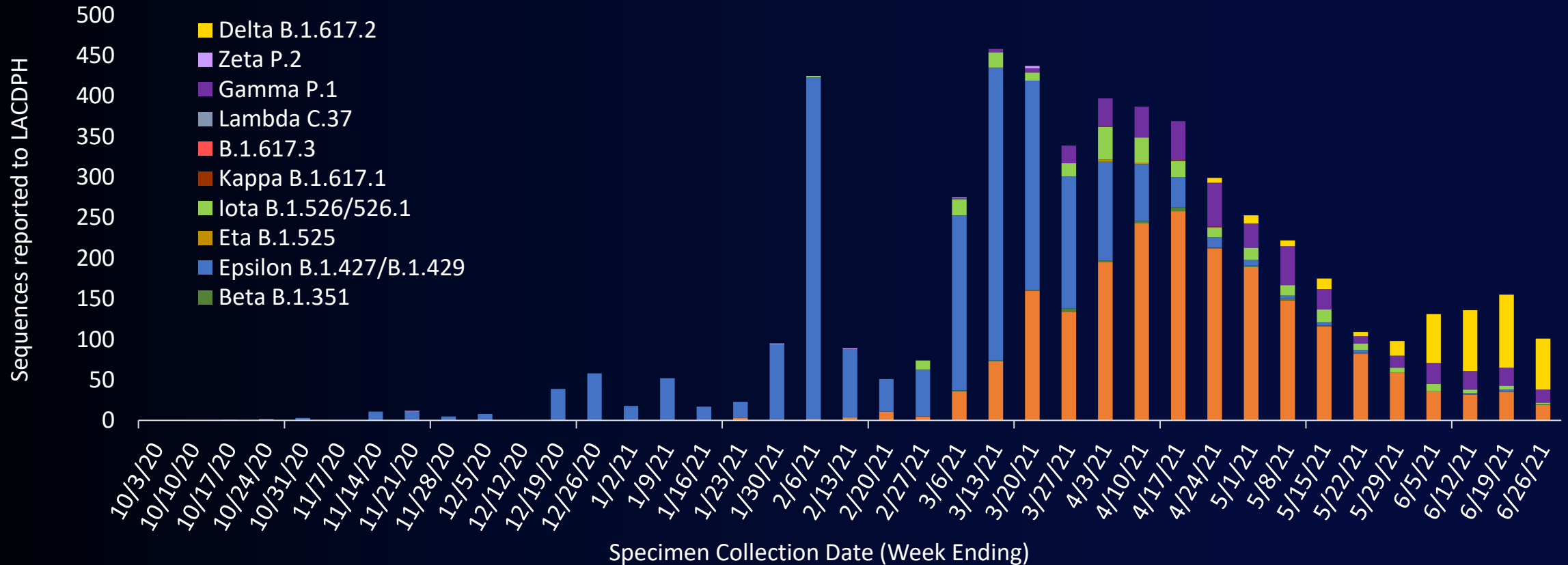
Race/Ethnicity	Case Incidence Rate		Hospitalization Rate		Death Rate	
	May 29	June 26	May 29	June 26	May 29	June 26
Black	38	↑ 65	8.9	↑ 9.3	1.0	↓ 0.1
Latinx	21	↑ 26	6.6	↓ 5.4	0.9	↓ 0.2
White	16	↑ 22	3.9	↓ 2.7	0.4	↓ 0.1
Asian	6	↑ 10	1.5	↑ 1.7	0.2	↓ 0.1



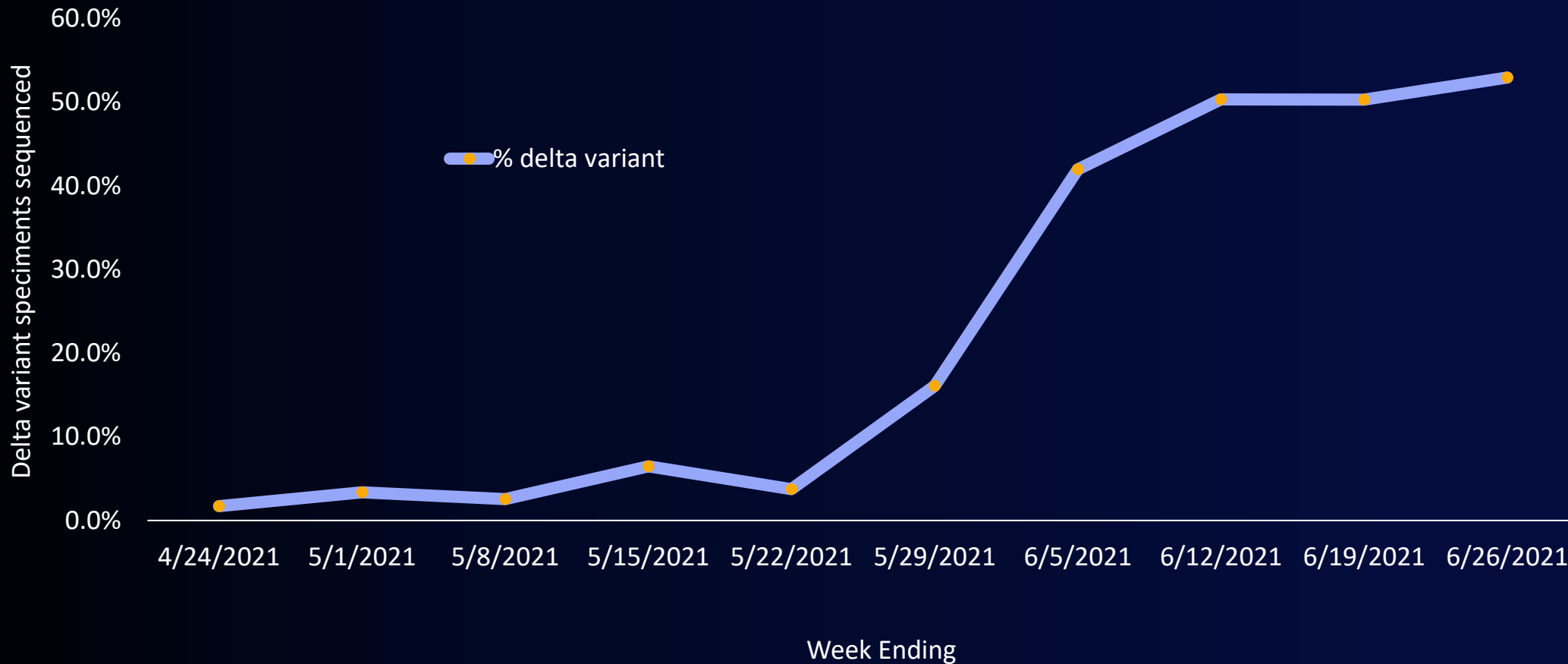
14-day Cumulative Crude Rate per 100,000 by Race/Ethnicity Children (<18 years old), May 1 – June 30, 2021



LAC Cases Caused by Variants of Concern by Specimen Collection Date Identified by PHL and Other California Laboratories



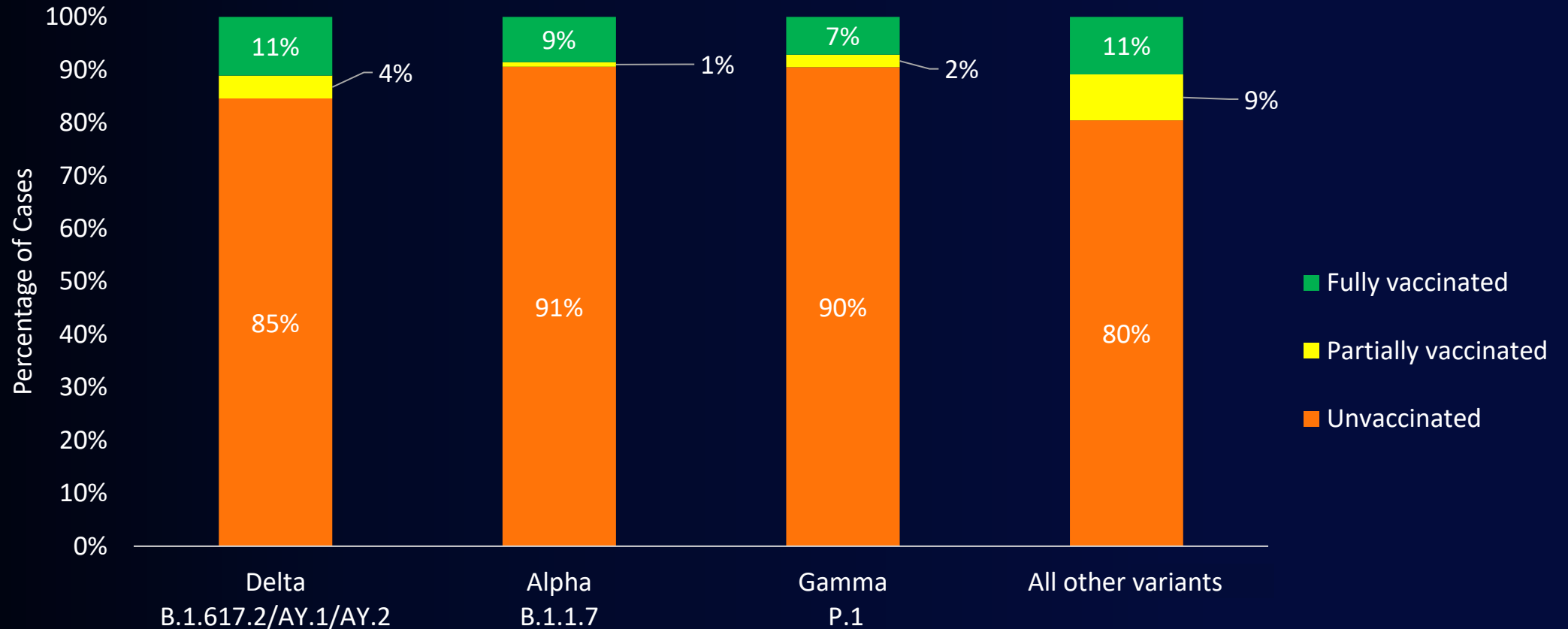
Percentage of Sequenced Specimens That Were Delta Variant by Week of Sequenced Specimen Collection Date, LAC



covid19.lacounty.gov

7/8/2021

Post-Vaccination Infections Among LAC Cases Tested for Variants Among Specimens Collected June 2021



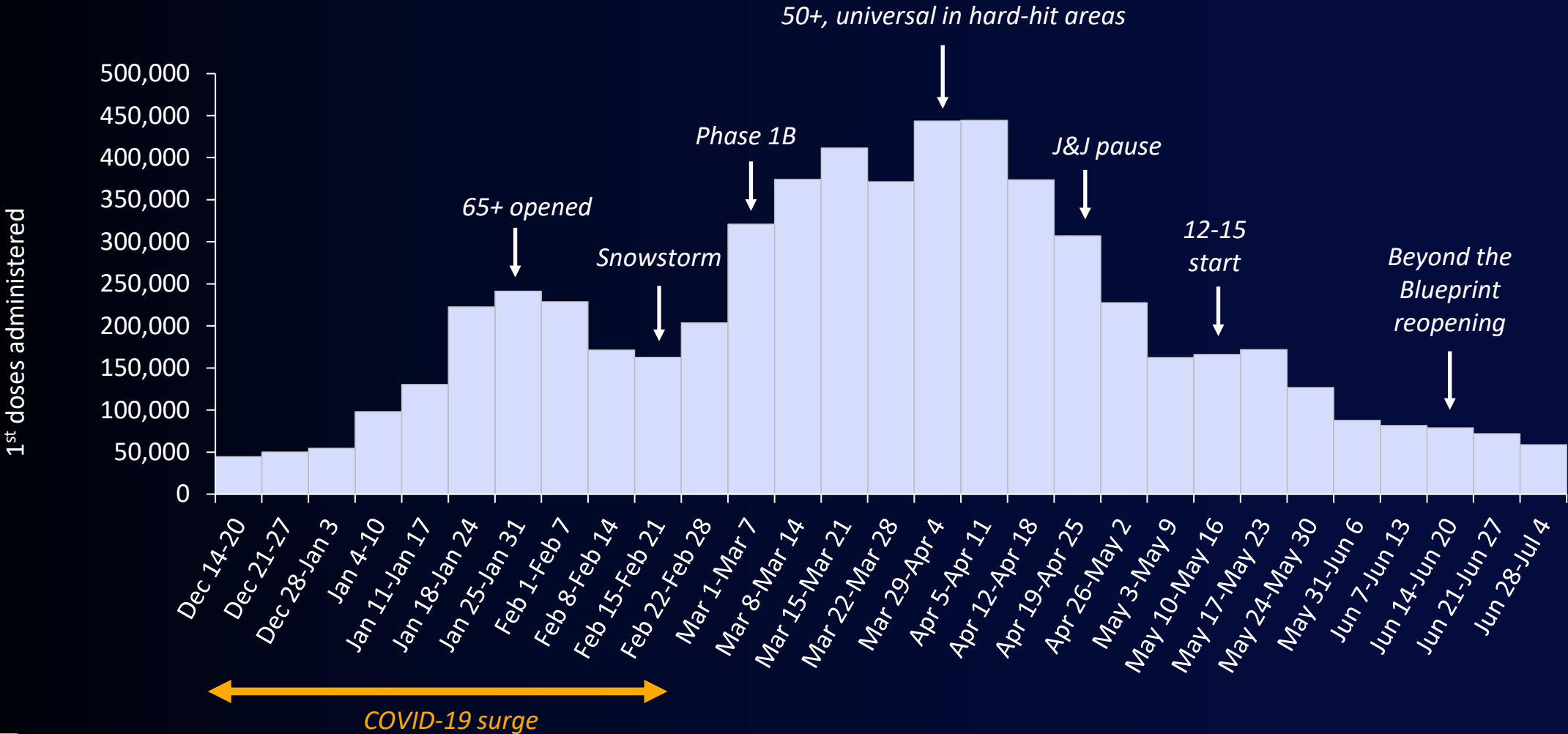
COVID-19 Vaccine Update

As of July 4th, 2021

Total Doses Administered	10,580,529
First Doses	5,889,505
Second Doses	4,691,024
LAC Residents with ≥ 1 Dose	5,726,276
LAC Residents Fully Vaccinated	4,999,859



First Doses Administered Weekly Among All Eligible Persons



Cumulative Percent of Population Who Have Received at Least 1 Dose of Vaccine, by Week and Age Group

Age Group	June 4, 2021	July 4, 2021	Relative % Increase
12-15	28%	39%	39%
16-17	48%	54%	14%
18-29	53%	57%	8%
30-49	62%	65%	6%
50-64	71%	73%	4%
65-79	90%	91%	2%
80+	76%	77%	1%



Cumulative Percent of Population 16 and Older Who Have Received at Least 1 Dose of Vaccine, by Race/Ethnicity

Race/Ethnicity	June 4, 2021	July 4, 2021	Relative % Increase
Black/African American	42%	45%	5.7%
Latinx	51%	54%	5.8%
American Indian/Alaska Native*	59%	62%	6.0%
White	64%	65%	2.7%
Asian	73%	76%	3.3%
NHOPI**	114%	118%	3.9%

*Likely an overestimate due to inclusion of multiracial people

**NHOPI estimates not reliable due to high likelihood of inaccuracies



Who Isn't Getting Vaccinated?




Percent of LA County Residents With At Least 1 Dose of Vaccine as of June 27, 2021

	12-15	16-17	18-29	30-49	50-64	65-79	80+
Black/African American	19	27	28	39	52	69	61
Latinx	27	42	43	51	66	81	61
American Indian/Alaska Native*	40	52	59	66	57	68	65
White	45	58	58	63	61	82	72
Asian	69	81	76	73	74	85	68

*Likely an overestimate due to inclusion of multiracial people



Two-Week Age-Adjusted Case Incidence, Hospitalization, and Death Rates per 100,000 People and Cumulative Percent Vaccinated by Race/Ethnicity June 13 - June 26, 2021

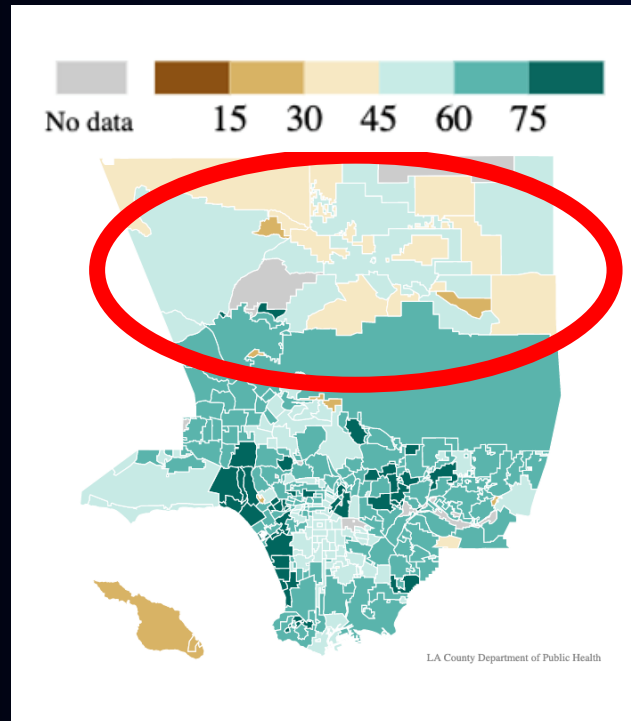
Race/Ethnicity	Case Incidence Rate	Hospitalization Rate	Death Rate	% With ≥1 Vaccine*
Black	65 	9.3 	0.1	45% 
Latino	26	5.4	0.2	54%
White	22	2.7	0.1	65%
Asian	10	1.7	0.1	75%

*As of 6/26/21

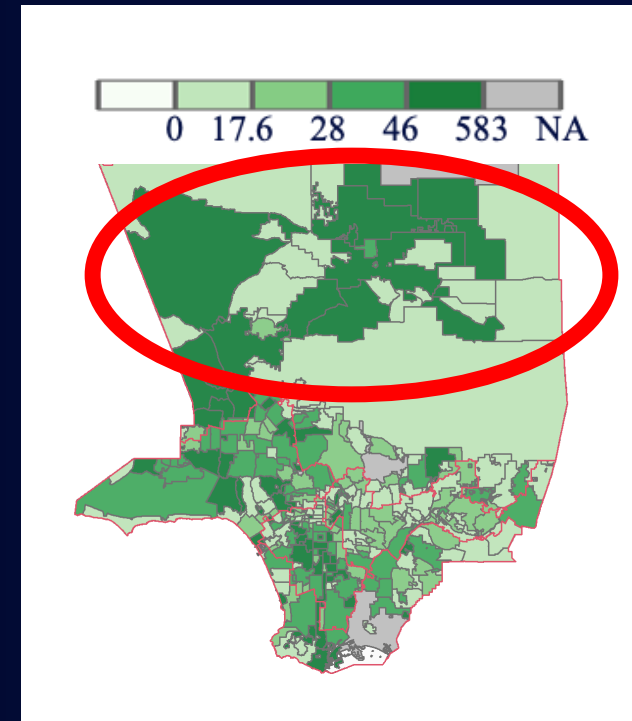


Vaccination and Case Rates by Community

% Vaccinated
as of **June 16**



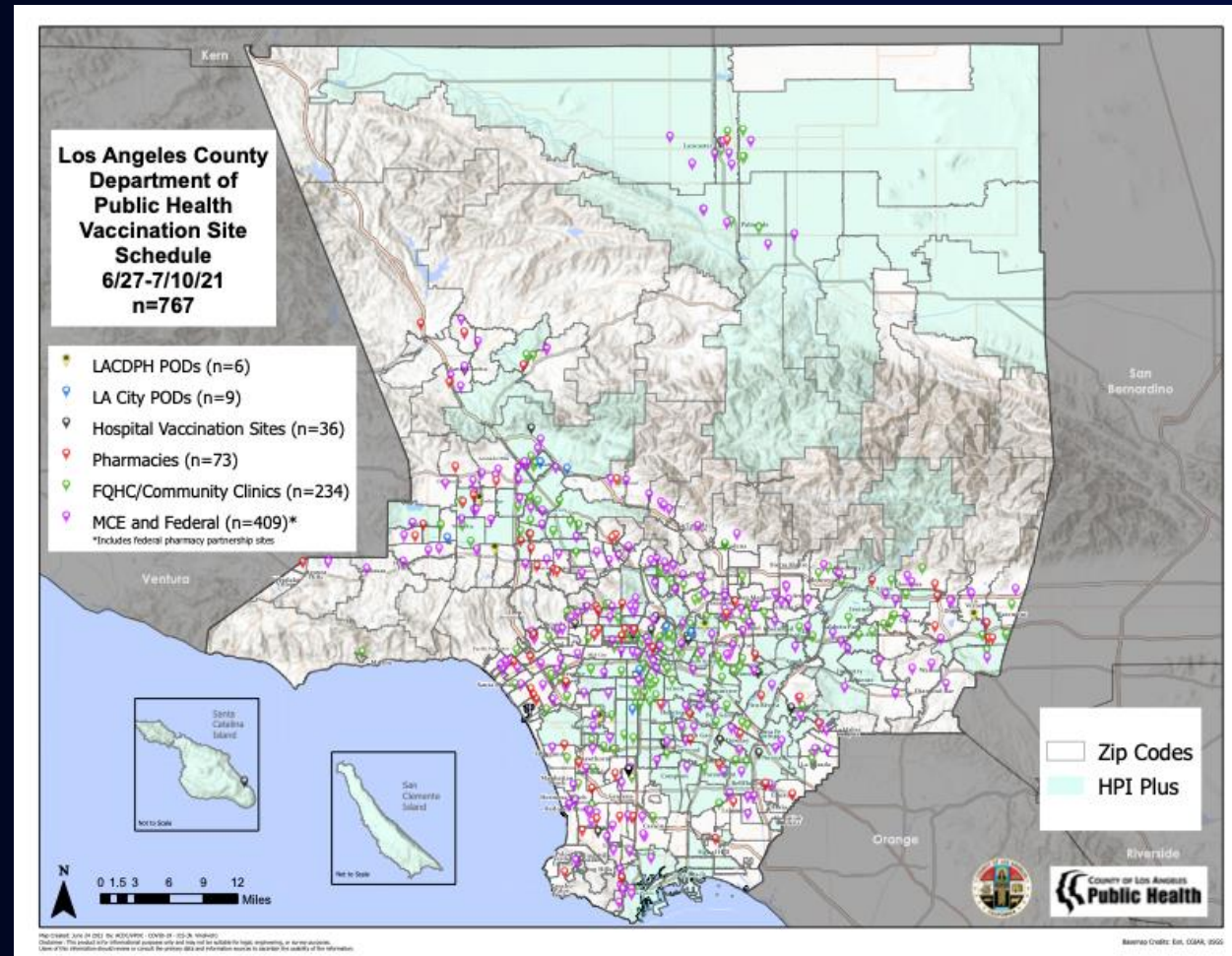
14d cumulative cases/100K
as of **June 26**



covid19.lacounty.gov

7/8/2021

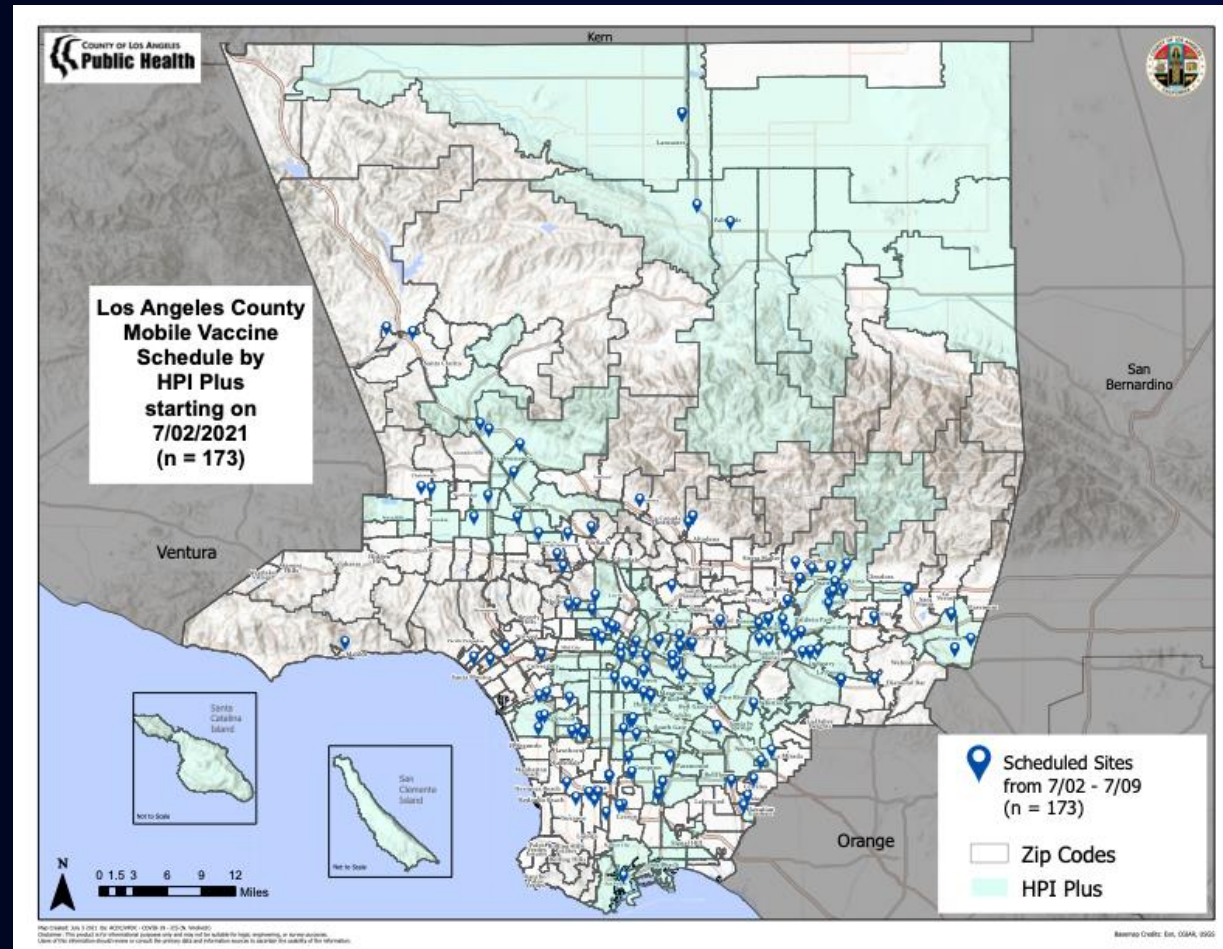
Vaccination Sites in LA County



covid19.lacounty.gov

7/8/2021

Mobile Vaccine Units in LA County



covid19.lacounty.gov

7/8/2021

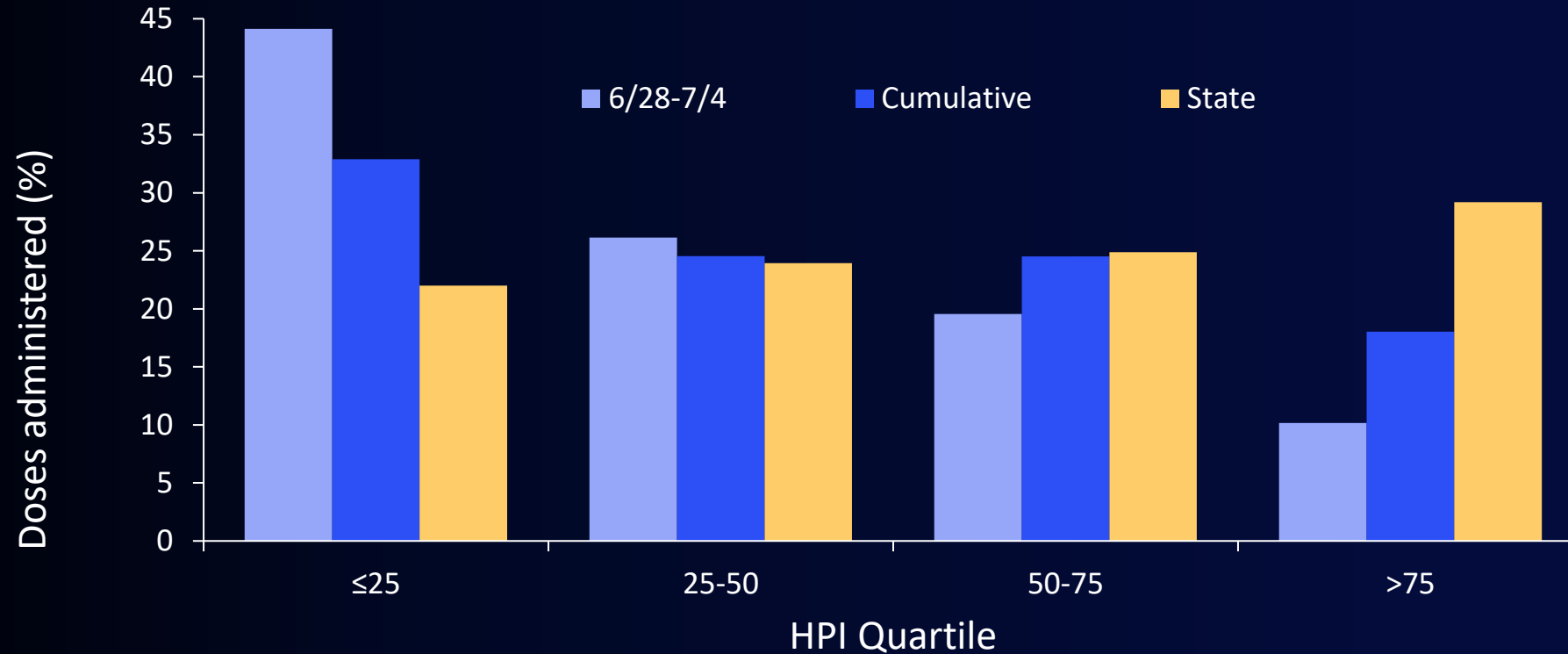
Our Outreach and Educational Efforts



covid19.lacounty.gov

7/8/2021

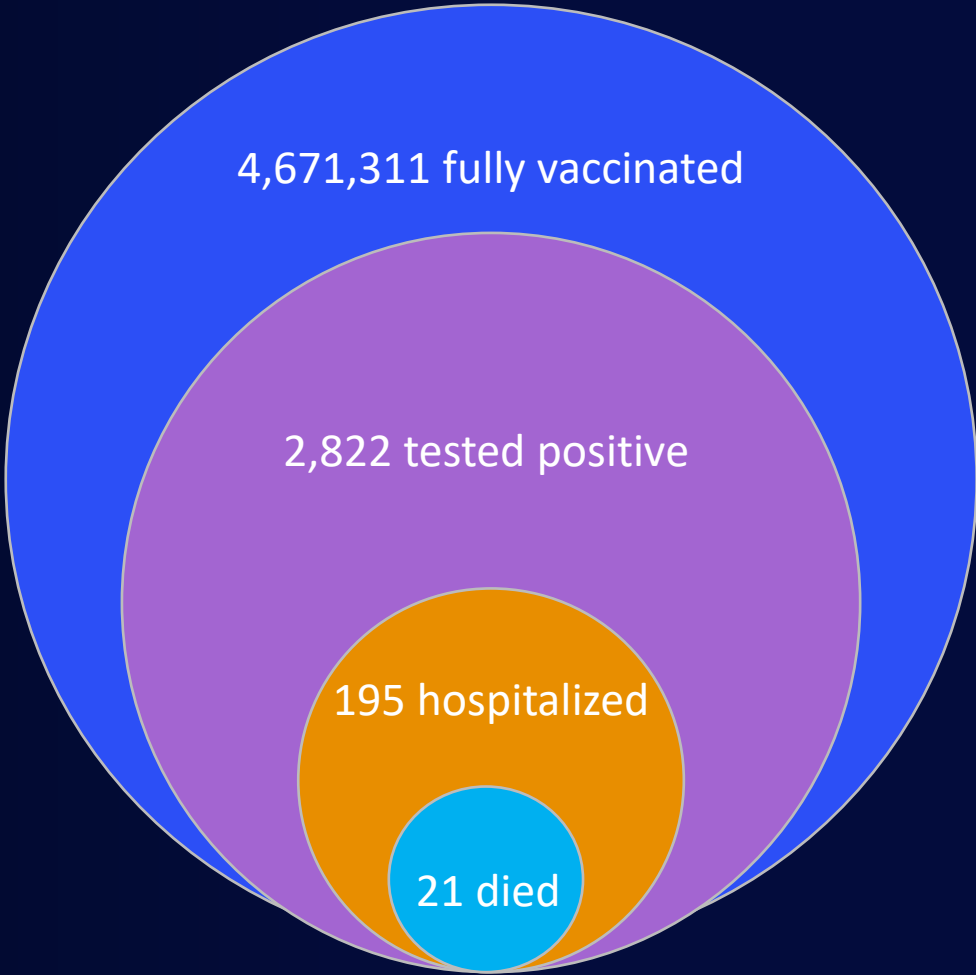
Doses Administered to People Living in Vulnerable Communities



Covid Among Fully Vaccinated People in LAC

Of fully vaccinated people:

- 0.06% tested positive
- 0.004% hospitalized for Covid
- 0.0004% died



To Thank You for Getting Vaccinated



- Enter the sweepstakes to win entrance to one of 7 sets of concert tickets
 - 1st and 2nd-dose recipients
- Enter the sweepstakes by getting your vaccine between this Friday and next Thursday at:
 - LA County sites
 - LA City sites
 - St. John's Well Child and Family Center sites
 - More sites to come
- Go to VaccinateLACounty.com to find a location near you
- **THANK YOU TO THE STAPLES CENTER AND THE HOLLYWOOD BOWL!**



covid19.lacounty.gov

7/8/2021

Worker Rights and Employer Obligations

Translate A-Z Index A B C D E F G H I J K L M N O P Q R S T U V W X Y Z ALL Font Size | A A A

Public Health Communications & Public Affairs

COVID-19 Home About COVID-19 Guidances Protection News Updates Help

LA County Road to Recovery
Most Current Health Officer Order:
See what it means for you

[View Latest Health Officer Order Here](#)

I am a ...

Business or Employee	Congregate Living Facility Employee/Resident
Homeless Services Facility Employee/Resident	Food Service Employer/Employee
Health Care Worker and First Responder	Public Service Employee
Individual, Family, and Specific Group	School, University, or Early Care and Education Institution
Correctional or Detention Facility	Person with COVID-19
Close Contact to a Person who has COVID-19	Person with Symptom

BUSINESS OR EMPLOYEE

Continuing Safety Measures English NEW	Physical Distancing & Face Covering Pocket Card 08/12/20	Help Prevent Outbreaks in the Workplace English Español Revised 06/25/20
Workers' Rights in California English NEW	Commercial Shipping and Cruising	Notice COVID-19 Exposure English العربية বাংলা हिन्दी 國體中文 繁體中文 繁體中文 日本語 한국어 Русский Español
	Entry Screening	

COVID-19: Continuing Safety Measures
Los Angeles County Department of Public Health
ONGOING COVID-19 REQUIREMENTS FOR BUSINESSES

THE COVID-19 PANDEMIC IS NOT OVER!
EMPLOYERS MUST CONTINUE INFECTION CONTROL, VIGILANCE AND REPORT COVID-19 CASES TO PUBLIC HEALTH TO PROTECT THEIR UNVACCINATED WORKFORCE.

Businesses are required to adhere to both:

- The County Health Officer Order (HOO) which is posted at <http://publichealth.lacounty.gov/media/coronavirus/> and the CAL/OSHA Emergency Temporary Standards (ETS) posted at <https://www.dir.ca.gov/dosh/coronavirus.html>.

County Health Officer Order Requirements:

- When any business knows of three (3) or more employees, independent contractors or temporary workers, with COVID-19 among their employees (or onsite workers, if applicable), the employer (owner/manager/operator of the business) must report this outbreak to the Department of Public Health at (888) 397-3993 or (213) 240-7821, or online at www.redcap.link/covidreport.
- When one or more employees, assigned or contracted workers, or volunteers of the business has tested positive for, or has symptoms consistent with COVID-19 (case), the employer must have a protocol to require the isolation of case(s) at home and require immediate self-quarantine of all employees who are close contacts of the case(s).
- Masks are required for unvaccinated, partially vaccinated individuals in indoor public settings and businesses (examples: retail, restaurants, theaters, family entertainment centers, meetings, and state and local government offices serving the public, among others).

CAL/OSHA COVID-19 Emergency Temporary Standards: Employers Must:

- Have a written COVID-19 Prevention Program, which includes:
 - Employee training and instruction on COVID-19
 - Plan to respond to COVID-19 cases in the workplace;
 - Employee face covering protocol;
 - Plan for excluding COVID-19 cases from the workplace until the return-to-work criteria requirements are met.

Face Coverings:

- Provide unvaccinated employees with face coverings and ensure that they are worn when indoors or in a shared vehicle.

Vaccination Status of Employees:

- Document vaccination status of fully vaccinated employees, in order to allow those employees to go without face coverings. If no documentation, the employee must be treated as being unvaccinated. Employee vaccination status is confidential.

Los Angeles County Department of Public Health
www.publichealth.lacounty.gov

COVID-19 Safety: Workers' Rights in California

Your employer must take steps to protect you from COVID-19. Know your rights.

Los Angeles County Department of Public Health
www.publichealth.lacounty.gov

COUNTY OF LOS ANGELES
Public Health