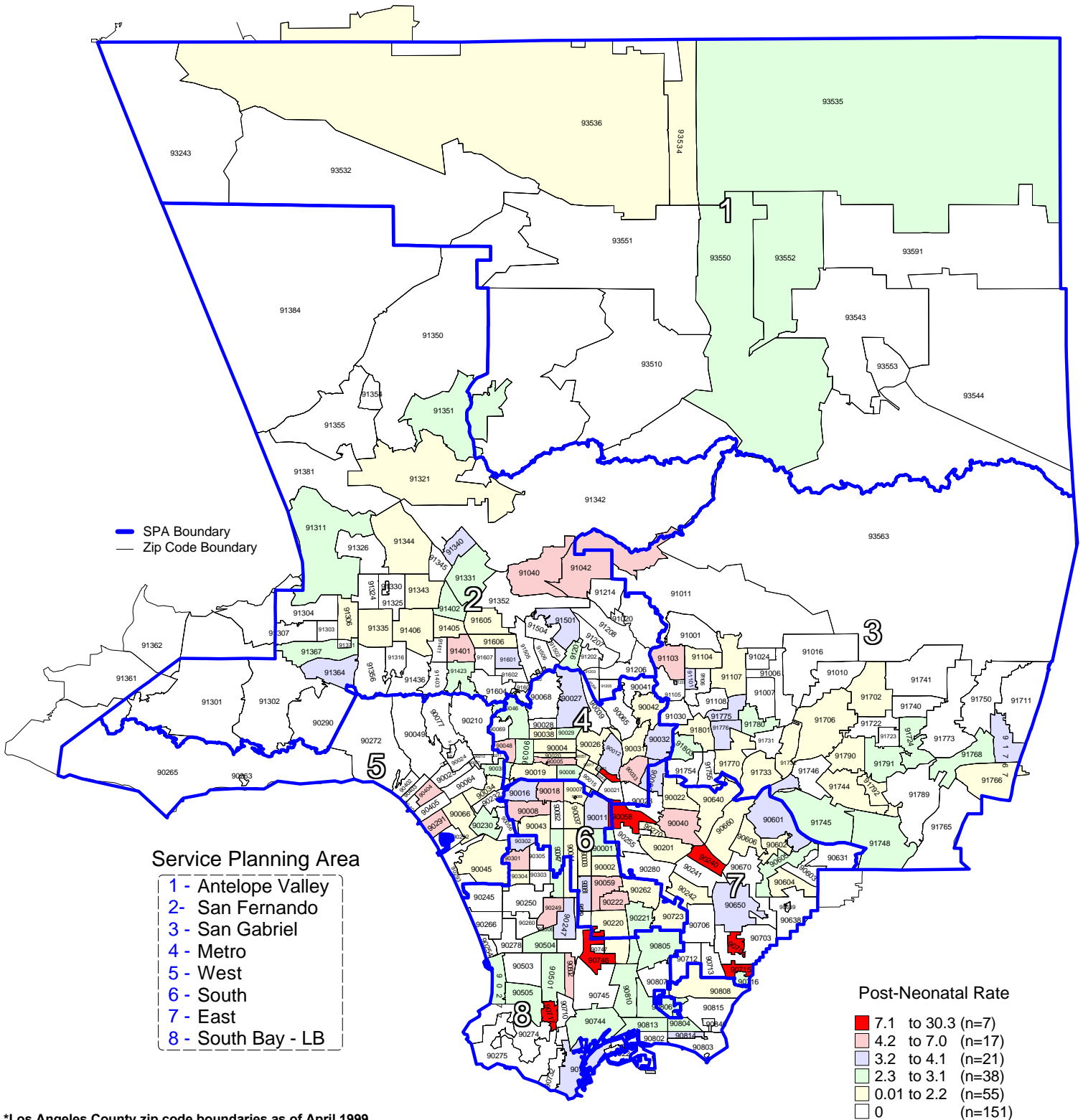


Post-Neonatal Mortality Rate by Zip Code* and Service Planning Area (SPA)

Los Angeles County, 1999



*Los Angeles County zip code boundaries as of April 1999.

Total number of live births in Los Angeles County, 1999 = 156,153
 Total number of Post-Neonatal deaths in Los Angeles County, 1999 = 280

Note: Post-Neonatal mortality rate is defined as deaths occurring between ages 28 and 364 days per 1,000 live births

Source: 1999 birth records from California Department of Health Services, Center for Health Statistics

n = total number of zip codes in range

Year 2000 Objective: Reduce the post-neonatal mortality rate to no more than 2.5 per 1,000 live births.