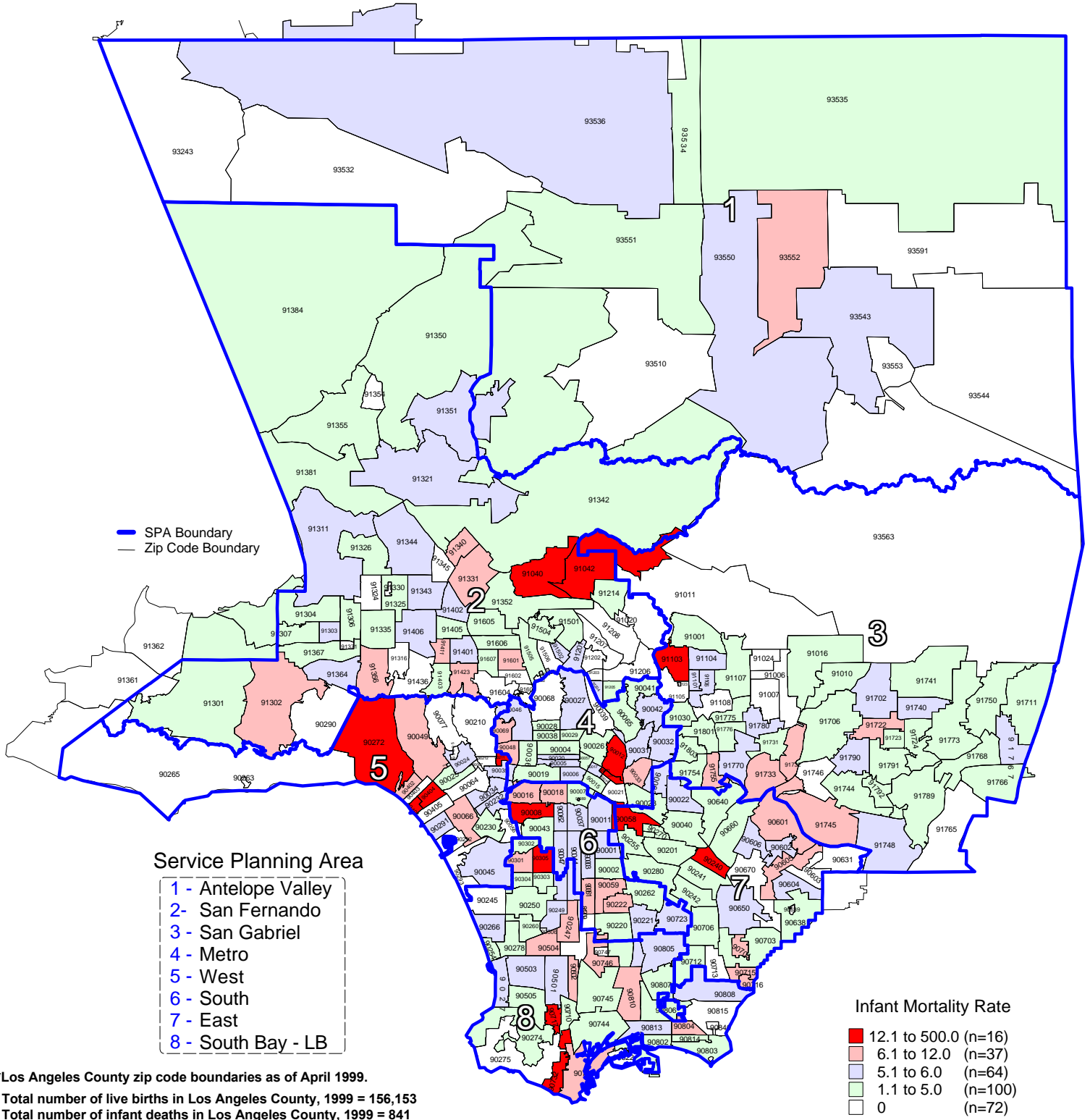


Infant Mortality Rate by Zip Code* and Service Planning Area (SPA)

Los Angeles County, 1999



*Los Angeles County zip code boundaries as of April 1999.

Total number of live births in Los Angeles County, 1999 = 156,153
Total number of infant deaths in Los Angeles County, 1999 = 841

Note: Infant mortality rate is defined as deaths occurring in less 365 days per 1,000 live births

Source: 1999 birth and death records from California Department of Health Services, Center for Health Statistics

n = total number of zip codes in range

**Year 2000 Objective: Reduce the infant mortality rate to no more than 7 per 1,000 live births.