

**Live Births**

**TITLE V INDICATOR TEMPLATE**

**INDICATOR:** Crude Birth Rate

**DEFINITION:** The number of live births per 1,000 total population

**NUMERATOR:** The number of live births, by place of residence, in a calendar year

**DENOMINATOR:** The total population, by place of residence, in a calendar year

**HEALTHY PEOPLE 2010 OBJECTIVE:**  
None

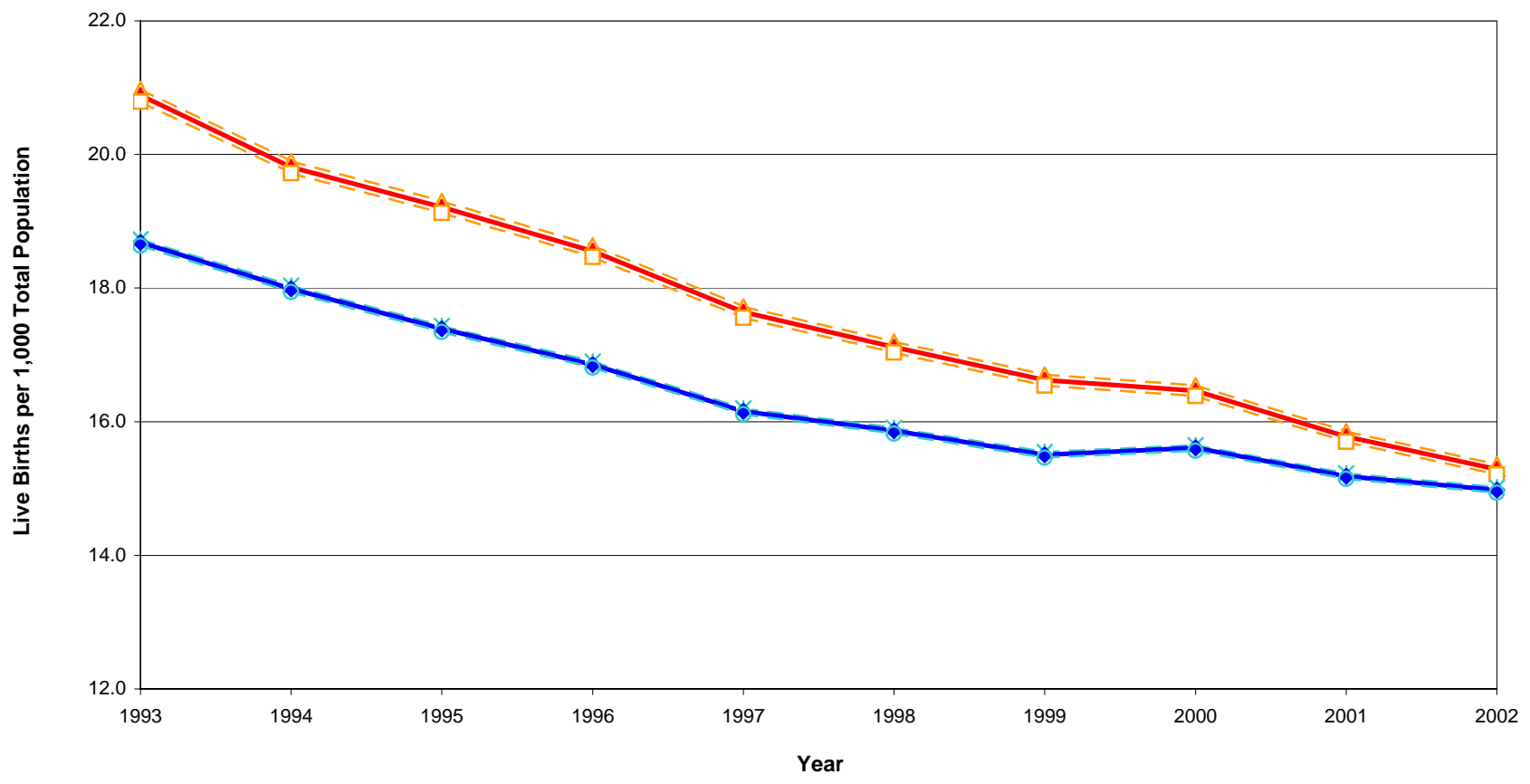
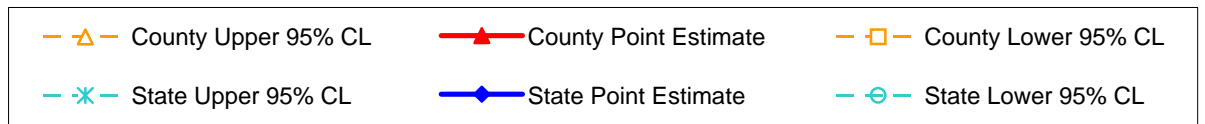
**RISK FACTORS:** Not applicable

Year	California				LA County			
	Total Births		95% Confidence Interval		Total Births		95% Confidence Interval	
	Number	Rate	Lower	Upper	Number	Rate	Lower	Upper
1993	584,483	18.7	18.6	18.7	189,706	20.9	20.8	21.0
1994	567,034	18.0	17.9	18.0	180,394	19.8	19.7	19.9
1995	551,226	17.4	17.3	17.4	174,862	19.2	19.1	19.3
1996	538,628	16.9	16.8	16.9	168,973	18.6	18.5	18.6
1997	524,174	16.2	16.1	16.2	162,036	17.6	17.6	17.7
1998	521,265	15.9	15.8	15.9	158,604	17.1	17.0	17.2
1999	518,073	15.5	15.5	15.5	156,153	16.6	16.5	16.7
2000	531,285	15.6	15.6	15.6	157,391	16.5	16.4	16.5
2001	527,371	15.2	15.1	15.2	153,523	15.8	15.7	15.9
2002	529,245	15.0	14.9	15.0	151,167	15.3	15.2	15.4

Denominator: Total Population		
Year	California	LA County
1993	31,283,712	9,083,694
1994	31,522,590	9,106,503
1995	31,700,363	9,101,099
1996	31,959,275	9,108,120
1997	32,450,641	9,185,592
1998	32,861,720	9,265,790
1999	33,416,747	9,394,216
2000	34,043,198	9,559,635
2001	34,729,740	9,730,885
2002	35,338,807	9,889,170

Sources: California Department of Health Services, Center for Health Statistics, Vital Statistics, 1993-2002.  
Denominator data: California Department of Finance, "Race/Ethnic Population with Age and Sex Detail, 1970-2050", Sacramento, California, May 2004.

### Live Births per 1,000 Total Population California vs. Los Angeles County, 1993-2002



Sources: California Department of Health Services, Center for Health Statistics, Vital Statistics, 1993-2002.  
 Denominator data: California Department of Finance, "Race/Ethnic Population with Age and Sex Detail, 1970-2050", Sacramento, California, May 2004.

**TITLE V INDICATOR TEMPLATE**

**INDICATOR:** Percent of Total Live Births by Mother's Race/Ethnicity, 2001

**DEFINITION:** The percent of total live births for selected race/ethnic groups

**NUMERATOR:** Number of live births, by mother's race/ethnicity, by place of residence, in a calendar year

**DENOMINATOR:** Total number of live births, by place of residence, in a calendar year

**HEALTHY PEOPLE 2010 OBJECTIVE:**

None

**RISK FACTORS:** Not applicable

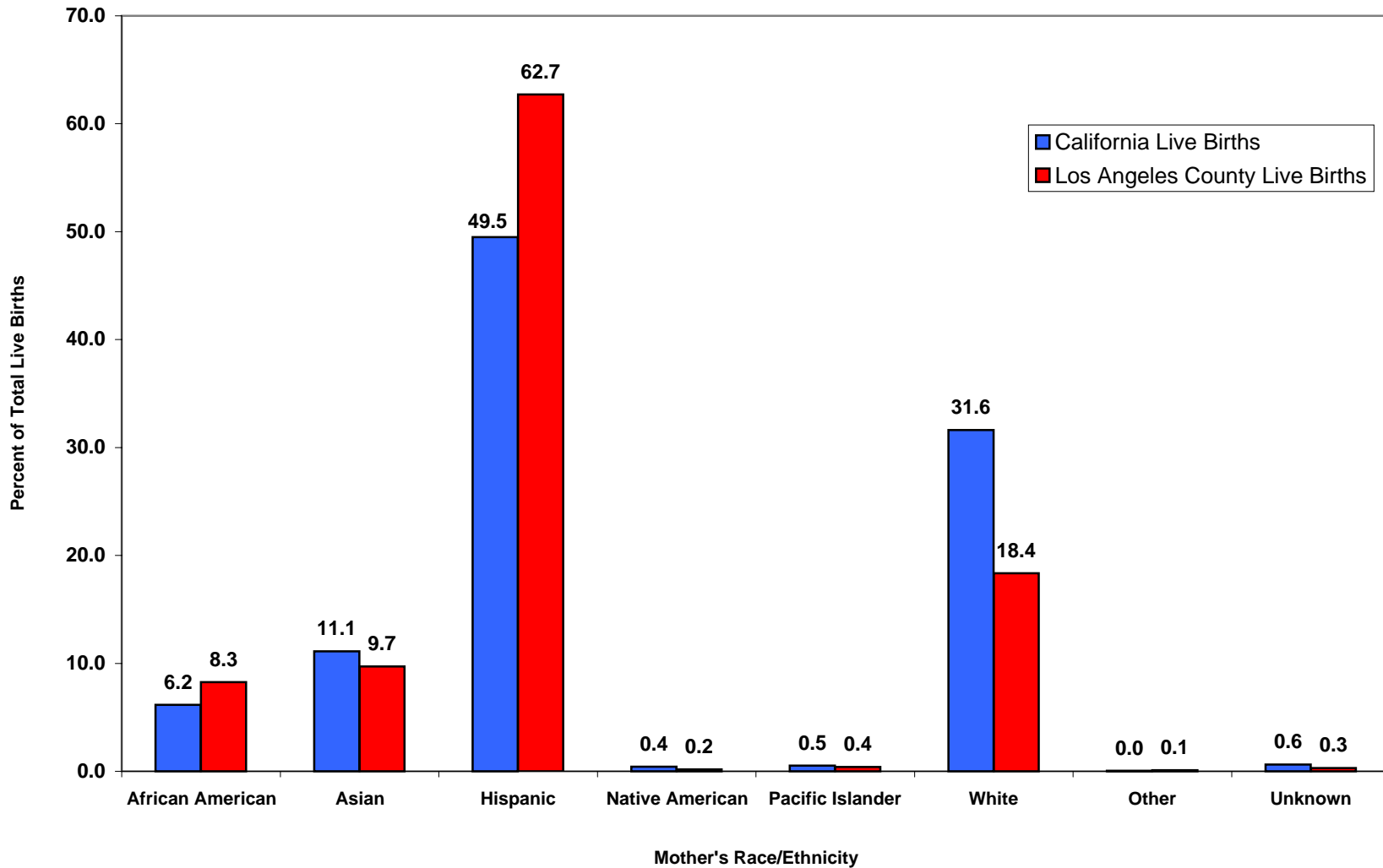
Race/Ethnicity	2001 California				2001 LA County			
	Live Births		95% Confidence Interval		Live Births		95% Confidence Interval	
	Number	Percent	Lower	Upper	Number	Percent	Lower	Upper
African American	32,469	6.2	6.1	6.2	12,671	8.3	8.1	8.4
Asian*	58,594	11.1	11.0	11.2	14,920	9.7	9.6	9.9
Hispanic	260,996	49.5	49.4	49.6	96,288	62.7	62.5	63.0
Native American	2,229	0.4	0.4	0.4	253	0.2	0.1	0.2
Pacific Islander	2,832	0.5	0.5	0.6	617	0.4	0.4	0.4
White	166,772	31.6	31.5	31.7	28,179	18.4	18.2	18.5
Other	237	0.0	0.0	0.1	116	0.1	0.1	0.1
Unknown	3,242	0.6	0.6	0.6	479	0.3	0.3	0.3
<b>Total</b>	<b>527,371</b>	<b>100.0</b>	<b>100.0</b>	<b>100.0</b>	<b>153,523</b>	<b>100.0</b>	<b>100.0</b>	<b>100.0</b>

Denominator: Total Live Births 2001	
California	LA County
527,371	153,523
527,371	153,523
527,371	153,523
527,371	153,523
527,371	153,523
527,371	153,523
527,371	153,523
527,371	153,523
527,371	153,523

Note: \* Filipinos are included with Asians.

Source: California Department of Health Services, Center for Health Statistics, Vital Statistics, 2001.

**Percent of Total Live Births by Mother's Race/Ethnicity  
California vs. Los Angeles County, 2001**



Note: \* Filipinos are included with Asians.

Source: California Department of Health Services, Center for Health Statistics, Vital Statistics, 2001.

**TITLE V INDICATOR TEMPLATE**

**INDICATOR:** Percent of Total Live Births by Mother's Race/Ethnicity, 2002

**DEFINITION:** The percent of total live births for selected race/ethnic groups

**NUMERATOR:** Number of live births, by mother's race/ethnicity, by place of residence, in a calendar year

**DENOMINATOR:** Total number of live births, by place of residence, in a calendar year

**HEALTHY PEOPLE 2010 OBJECTIVE:** None

**RISK FACTORS:** Not applicable

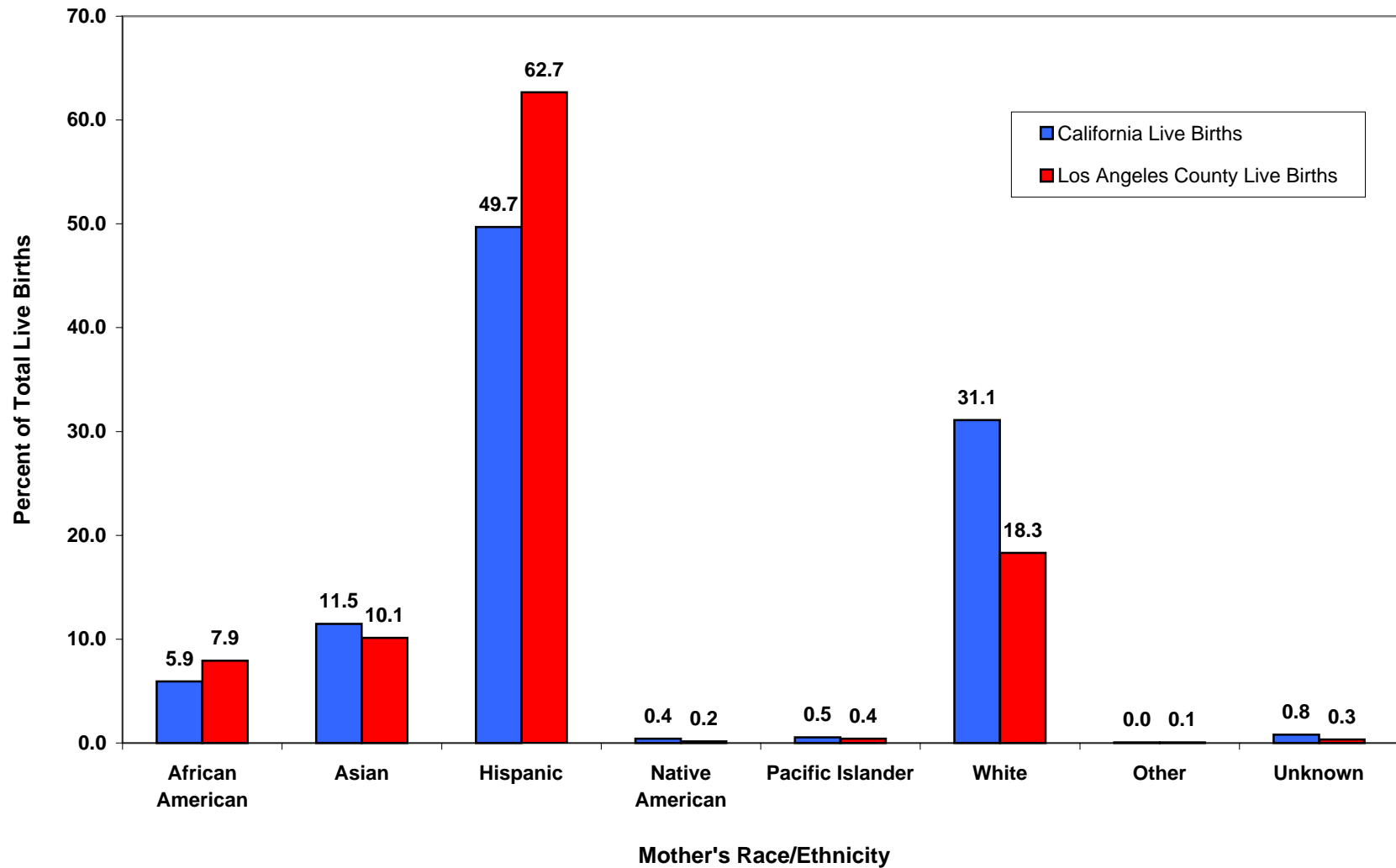
Race/Ethnicity	2002 California				2002 LA County			
	Live Births		95% Confidence Interval		Live Births		95% Confidence Interval	
	Number	Percent	Lower	Upper	Number	Percent	Lower	Upper
African American	31,381	5.9	5.9	6.0	11,973	7.9	7.8	8.1
Asian*	60,694	11.5	11.4	11.6	15,301	10.1	10.0	10.3
Hispanic	263,023	49.7	49.6	49.8	94,742	62.7	62.4	62.9
Native American	2,261	0.4	0.4	0.4	253	0.2	0.1	0.2
Pacific Islander	2,905	0.5	0.5	0.6	623	0.4	0.4	0.4
White	164,581	31.1	31.0	31.2	27,674	18.3	18.1	18.5
Other	214	0.0	0.0	0.0	93	0.1	0.0	0.1
Unknown	4,186	0.8	0.8	0.8	508	0.3	0.3	0.4
<b>Total</b>	<b>529,245</b>	<b>100.0</b>	<b>100.0</b>	<b>100.0</b>	<b>151,167</b>	<b>100.0</b>	<b>100.0</b>	<b>100.0</b>

Denominator: Total Live Births 2002	
California	LA County
529,245	151,167
529,245	151,167
529,245	151,167
529,245	151,167
529,245	151,167
529,245	151,167
529,245	151,167
529,245	151,167
529,245	151,167
529,245	151,167

Note: \* Filipinos are included with Asians.

Source: California Department of Health Services, Center for Health Statistics, Vital Statistics, 2002.

**Percent of Total Live Births by Mother's Race/Ethnicity  
California vs. Los Angeles County, 2002**



Note: \* Filipinos are included with Asians.

Source: California Department of Health Services, Center for Health Statistics, Vital Statistics, 2002.

**TITLE V INDICATOR TEMPLATE**

**INDICATOR:** Percent of Total Live Births by Mother's Race/Ethnicity, 1993-2002

**DEFINITION:** The percent of total live births for selected race/ethnic groups over time

**NUMERATOR:** Number of live births, by mother's race/ethnicity, by place of residence, in a calendar year

**DENOMINATOR:** Total number of live births, by place of residence, in a calendar year

**HEALTHY PEOPLE 2010 OBJECTIVE:**  
None

**RISK FACTORS:** Not applicable

Year	California Births														
	African American		Asian		Hispanic		Native American		Filipino/Pacific Islander*		White		Other/Unknown		Total Births
	Number	Percent	Number	Percent	Number	Percent	Number	Percent	Number	Percent	Number	Percent	Number	Percent	Number
1993	43,861	7.5	42,432	7.3	262,065	44.8	2,747	0.5	15,006	2.6	215,885	36.9	2,487	0.4	584,483
1994	41,481	7.3	42,758	7.5	257,463	45.4	2,694	0.5	15,052	2.7	204,756	36.1	2,830	0.5	567,034
1995	39,166	7.1	54,475	9.9	253,726	46.0	2,735	0.5	2,763	0.5	196,277	35.6	2,084	0.4	551,226
1996	37,029	6.9	54,164	10.1	254,674	47.3	2,642	0.5	2,778	0.5	185,255	34.4	2,088	0.4	538,628
1997	35,957	6.9	53,855	10.3	248,795	47.5	2,582	0.5	2,779	0.5	177,347	33.8	2,859	0.5	524,174
1998	35,200	6.8	52,718	10.1	247,796	47.5	2,587	0.5	2,818	0.5	176,598	33.9	3,548	0.7	521,265
1999	34,136	6.6	54,206	10.5	249,253	48.1	2,501	0.5	2,840	0.5	172,108	33.2	3,029	0.6	518,073
2000	32,302	6.1	58,876	11.1	257,958	48.6	1,975	0.4	2,376	0.4	168,406	31.7	3,138	0.6	531,285
2001	32,469	6.2	58,594	11.1	260,996	49.5	2,229	0.4	2,832	0.5	166,772	31.6	3,479	0.7	527,371
2002	31,381	5.9	60,694	11.5	263,023	49.7	2,261	0.4	2,905	0.5	164,581	31.1	4,400	0.8	529,245

Note: Filipinos are combined into Asian category after 1994.

Source: California Department of Health Services, Center for Health Statistics, Vital Statistics, 1993-2002.



**TITLE V INDICATOR TEMPLATE**

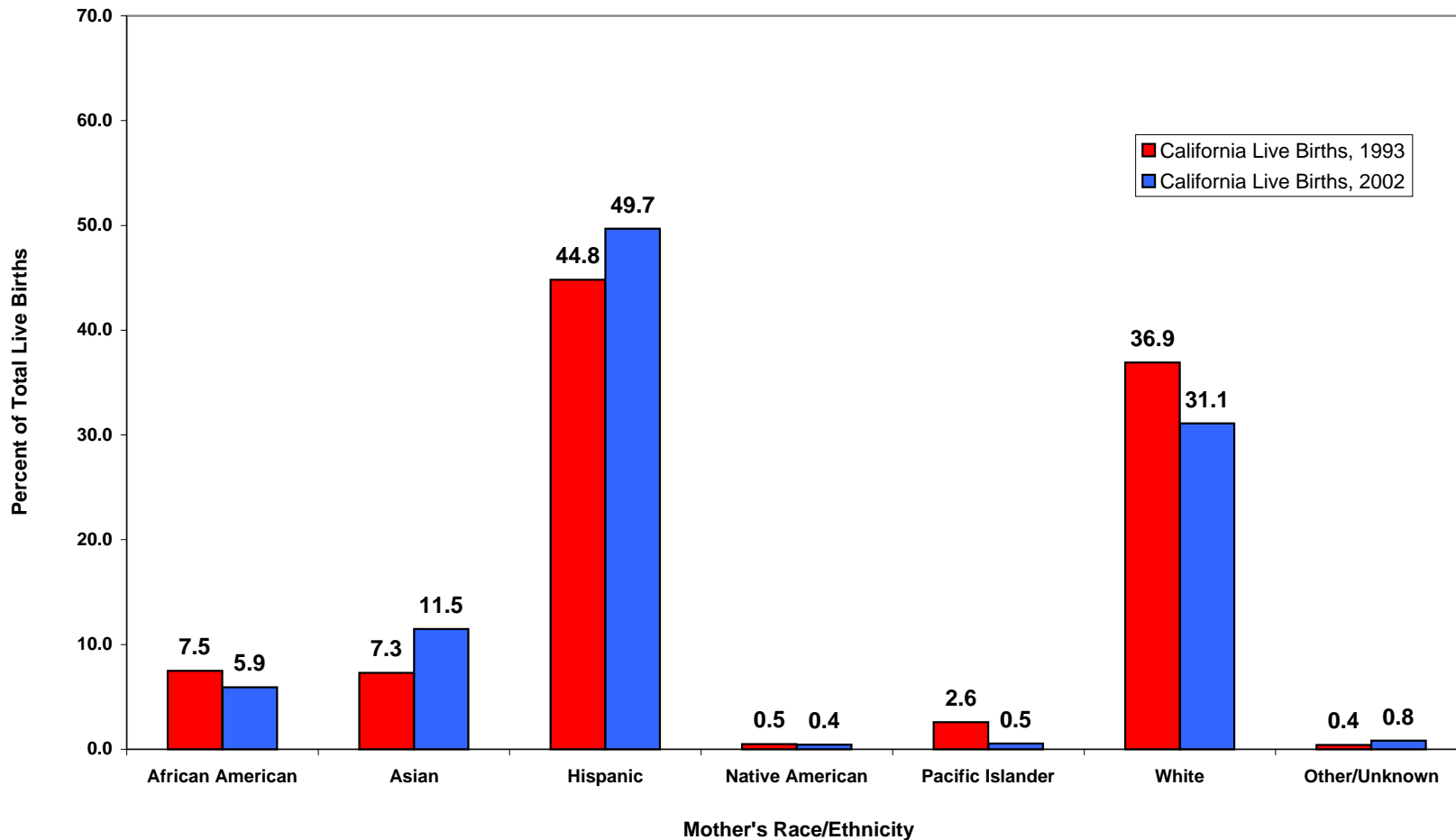
**INDICATOR: Percent of Total Live Births by Mother's Race/Ethnicity, 1993-2002 (continued)**

Year	LA County Births														
	African American		Asian		Hispanic		Native American		Filipino/Pacific Islander*		White		Other/Unknown		Total Births
	Number	Percent	Number	Percent	Number	Percent	Number	Percent	Number	Percent	Number	Percent	Number	Percent	Number
1993	18,698	9.9	12,300	6.5	113,451	59.8	346	0.2	4,296	2.3	40,197	21.2	418	0.2	189,706
1994	17,282	9.6	12,127	6.7	109,242	60.6	308	0.2	4,208	2.3	36,886	20.4	341	0.2	180,394
1995	16,148	9.2	15,334	8.8	107,228	61.3	341	0.2	685	0.4	34,872	19.9	254	0.1	174,862
1996	15,184	9.0	15,225	9.0	105,175	62.2	313	0.2	625	0.4	32,151	19.0	300	0.2	168,973
1997	14,530	9.0	14,943	9.2	100,228	61.9	304	0.2	611	0.4	31,072	19.2	348	0.2	162,036
1998	14,246	9.0	14,304	9.0	98,074	61.8	262	0.2	664	0.4	30,621	19.3	433	0.3	158,604
1999	13,724	8.8	14,397	9.2	97,103	62.2	270	0.2	653	0.4	29,514	18.9	492	0.3	156,153
2000	13,468	8.6	15,766	10.0	97,719	62.1	248	0.2	635	0.4	29,094	18.5	461	0.3	157,391
2001	12,671	8.3	14,920	9.7	96,288	62.7	253	0.2	617	0.4	28,179	18.4	595	0.4	153,523
2002	11,973	7.9	15,301	10.1	94,742	62.7	253	0.2	623	0.4	27,674	18.3	601	0.4	151,167

Note: Filipinos are combined into Asian category after 1994.

Source: California Department of Health Services, Center for Health Statistics, Vital Statistics, 1993-2002.

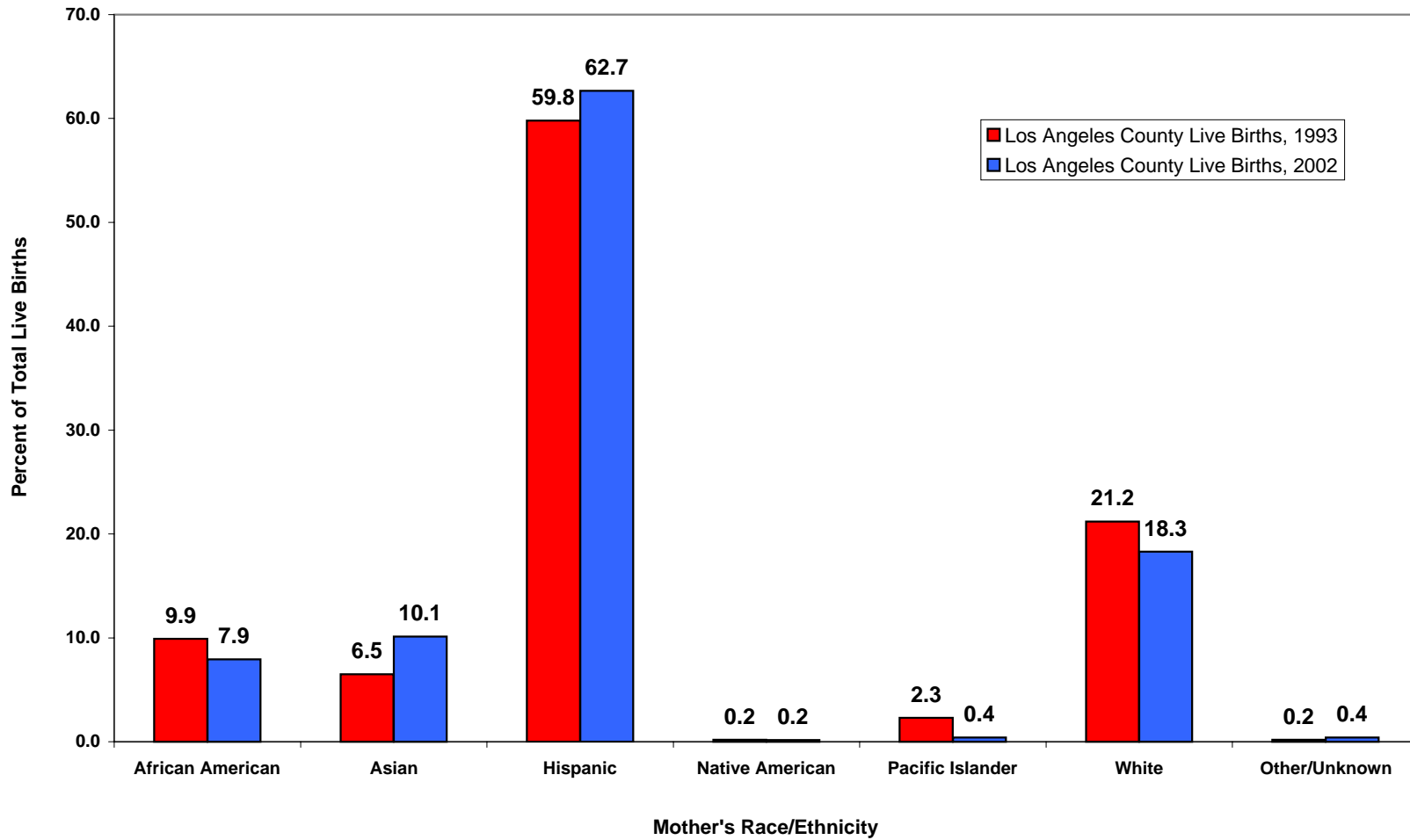
**Percent of Total Live Births by Mother's Race/Ethnicity  
California, 1993 vs. 2002**



Note: Filipinos are combined into Asian category after 1994.

Source: California Department of Health Services, Center for Health Statistics, Vital Statistics, 1993, 2002.

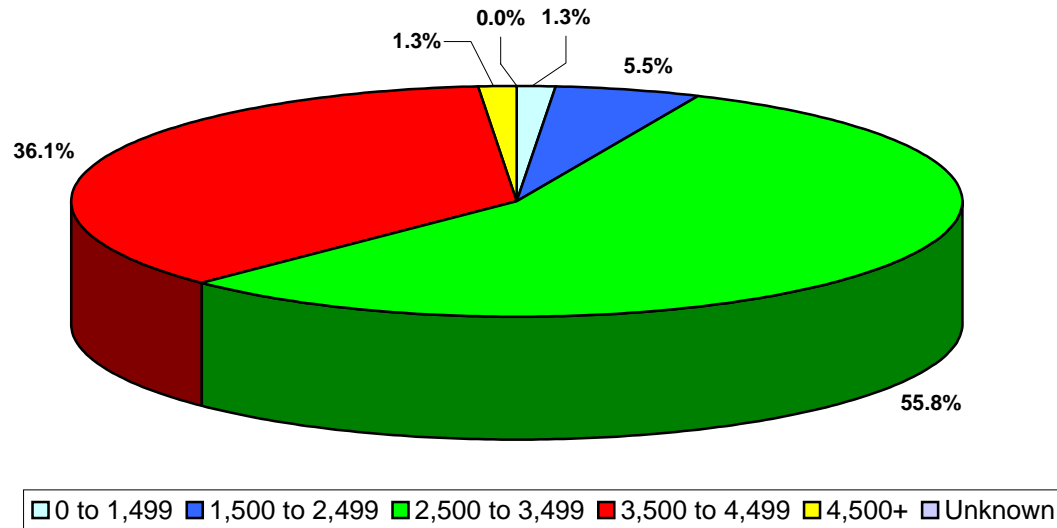
**Percent of Total Live Births by Mother's Race/Ethnicity  
Los Angeles County, 1993 vs. 2002**



Note: Filipinos are combined into Asian category after 1994.

Source: California Department of Health Services, Center for Health Statistics, Vital Statistics, 1993, 2002.

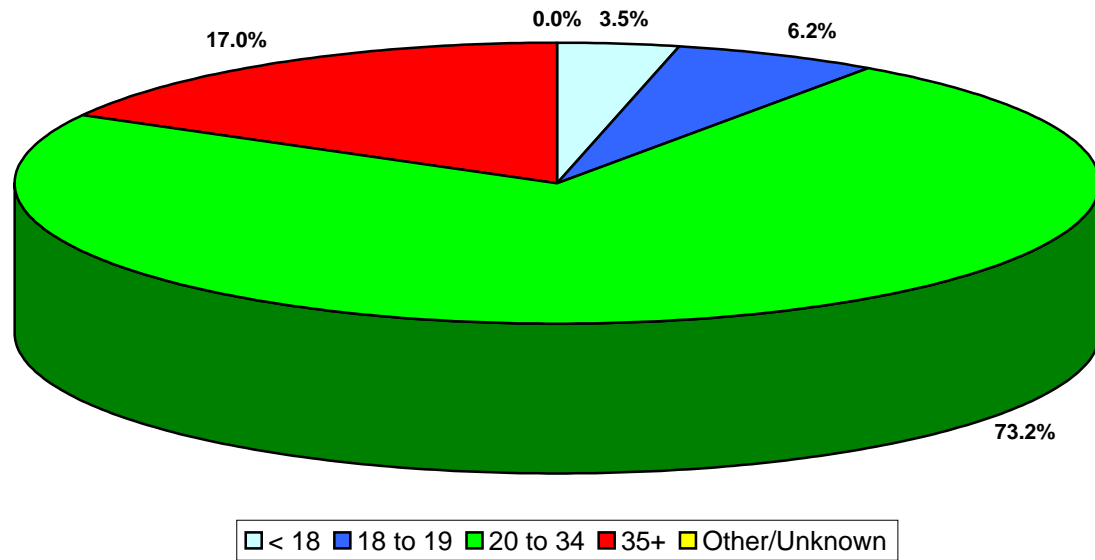
**Percent of Total Live Births by Birthweight  
Los Angeles County, 2002**



Los Angeles County, 2002				
Birthweight (grams)	Live Births		95% confidence Interval	
	Number	Percent	Lower	Upper
0 to 1,499	1,898	1.3	1.2	1.3
1,500 to 2,499	8,324	5.5	5.4	5.6
2,500 to 3,499	84,372	55.8	55.6	56.1
3,500 to 4,499	54,578	36.1	35.9	36.3
4,500+	1,991	1.3	1.3	1.4
Unknown	4	N/A	N/A	N/A
<b>Total</b>	<b>151,167</b>	<b>100.0</b>	<b>100.0</b>	<b>100.0</b>

Note: Rates are not calculated (N/C) if number is fewer than five. Rates are not applicable (N/A) in the "Unknown" category.  
Source: California Department of Health Services, Center for Health Statistics, Vital Statistics, 2002.

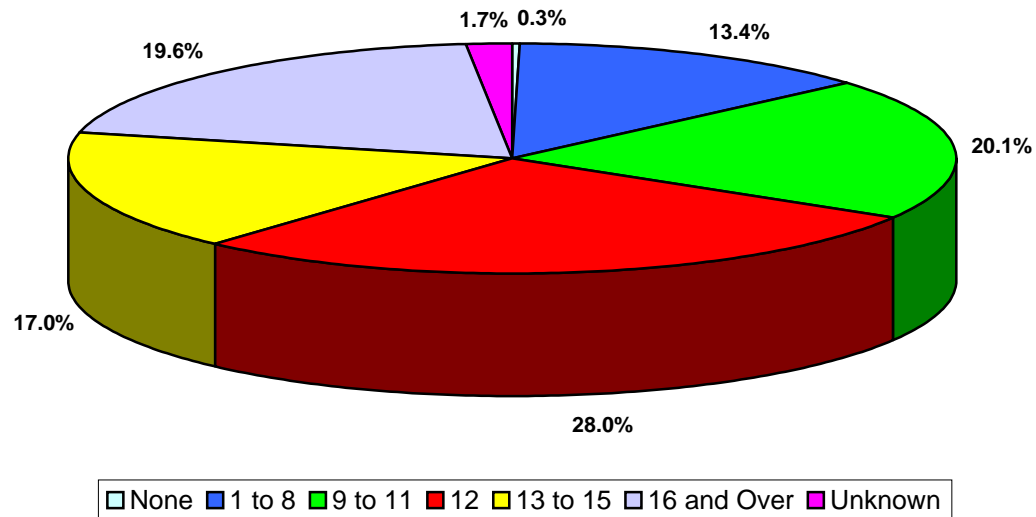
**Percent of Total Live Births by Mother's Age  
Los Angeles County, 2002**



Los Angeles County, 2002				
Mother's Age	Live Births		95% Confidence Interval	
	Number	Percent	Lower	Upper
< 18	5,329	3.5	3.4	3.6
18 to 19	9,429	6.2	6.1	6.4
20 to 34	110,641	73.2	73.0	73.4
35+	25,749	17.0	16.8	17.2
Other/Unknown	19	0.0	0.0	0.0
<b>Total</b>	<b>151,167</b>	<b>100.0</b>	<b>100.0</b>	<b>100.0</b>

Source: California Department of Health Services, Center for Health Statistics, Vital Statistics, 2002.

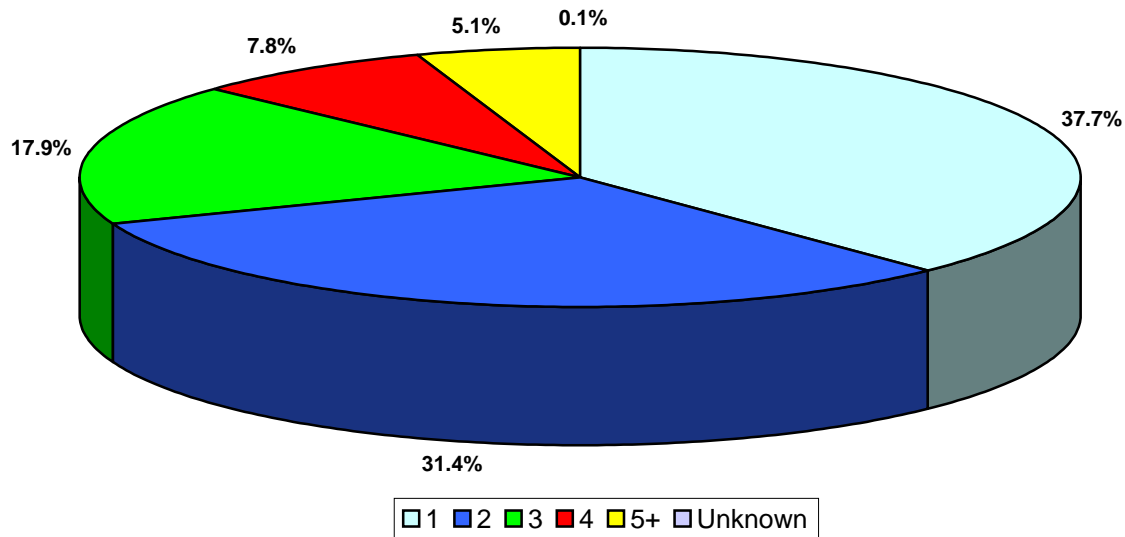
**Percent of Total Live Births by Mother's Years of Education  
Los Angeles County, 2002**



Los Angeles County, 2002				
Mother's Years of Education	Live Births		95% confidence Interval	
	Number	Percent	Lower	Upper
None	437	0.3	0.3	0.3
1 to 8	20,204	13.4	13.2	13.5
9 to 11	30,329	20.1	19.9	20.3
12	42,252	28.0	27.7	28.2
13 to 15	25,737	17.0	16.8	17.2
16 and Over	29,637	19.6	19.4	19.8
Unknown	2,571	1.7	1.6	1.8
<b>Total</b>	<b>151,167</b>	<b>100.0</b>	<b>100.0</b>	<b>100.0</b>

Note: This analysis did not adjust for teen mothers who may not be old enough to have reached a higher categorical education level.  
Source: California Department of Health Services, Center for Health Statistics, Vital Statistics, 2002.

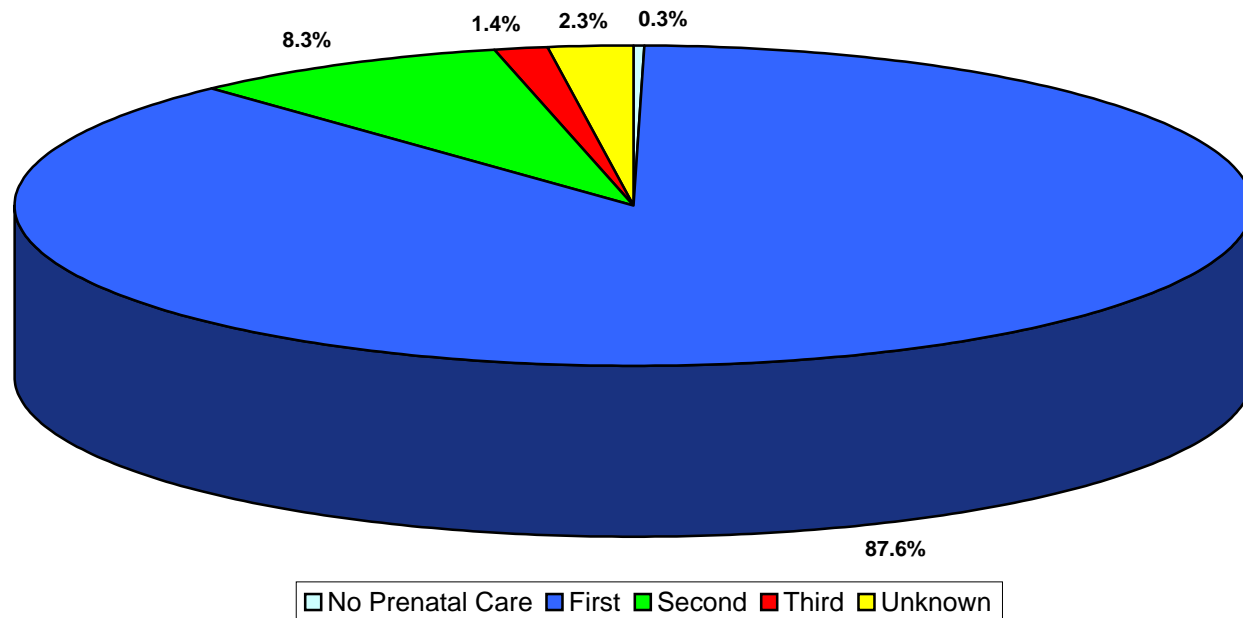
**Percent of Total Live Births by Parity  
Los Angeles County, 2002**



Los Angeles County, 2002				
Parity	Live Births		95% confidence Interval	
	Number	Percent	Lower	Upper
1	57,002	37.7	37.5	38.0
2	47,427	31.4	31.1	31.6
3	27,069	17.9	17.7	18.1
4	11,853	7.8	7.7	8.0
5+	7,676	5.1	5.0	5.2
Unknown	140	0.1	0.1	0.1
<b>Total</b>	<b>151,167</b>	<b>100.0</b>	<b>100.0</b>	<b>100.0</b>

Note: Parity = number of pregnancies resulting in live births to a woman. Number of total live births is used as a proxy for parity.  
Source: California Department of Health Services, Center for Health Statistics, Vital Statistics, 2002.

**Percent of Total Live Births by Mother's Trimester Prenatal Care (PNC) Began  
Los Angeles County, 2002**

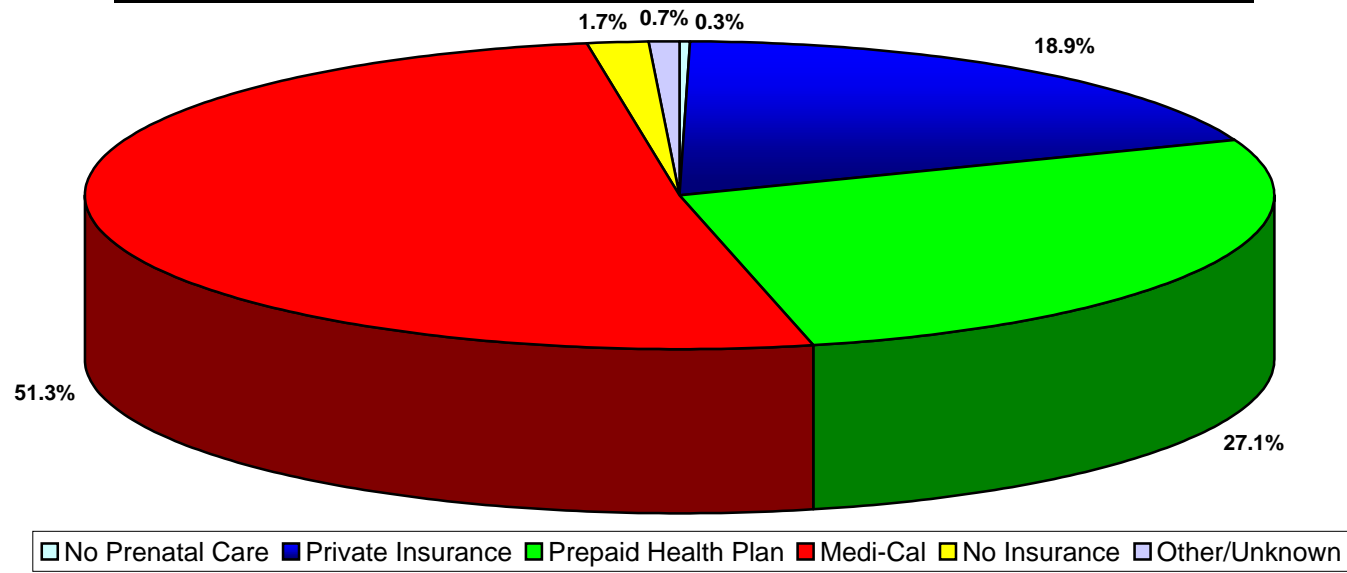


Los Angeles County, 2002				
Trimester Prenatal Care Began	Live Births		95% confidence Interval	
	Number	Percent	Lower	Upper
No Prenatal Care	517	0.3	0.3	0.4
First	132,493	87.6	87.5	87.8
Second	12,517	8.3	8.1	8.4
Third	2,189	1.4	1.4	1.5
Unknown	3,451	2.3	2.2	2.4
<b>Total</b>	<b>151,167</b>	<b>100.0</b>	<b>100.0</b>	<b>100.0</b>

Note: "Trimester Prenatal Care (PNC) Began" excludes the prenatal care experiences of all women whose pregnancies did not result in a live birth.  
Source: California Department of Health Services, Center for Health Statistics, Vital Statistics, 2002.



**Percent of Total Live Births by Source of Payment for Prenatal Care (PNC)  
Los Angeles County, 2002**

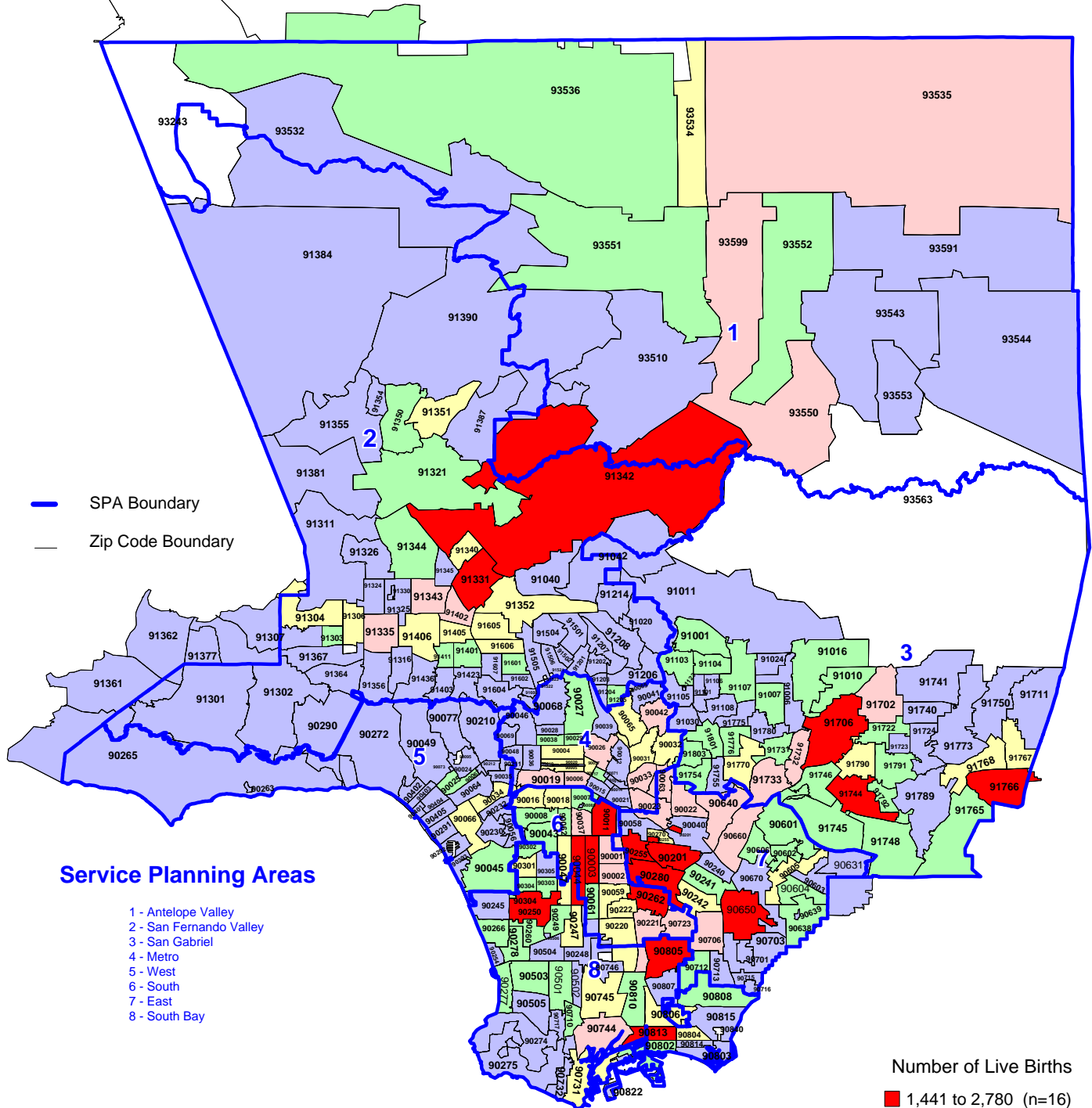


Los Angeles County, 2002				
Source of Payment for Prenatal Care	Live Births		95% Confidence Interval	
	Number	Percent	Lower	Upper
No Prenatal Care	517	0.3	0.3	0.4
Private Insurance	28,550	18.9	18.7	19.1
Prepaid Health Plan	40,976	27.1	26.9	27.3
Medi-Cal	77,518	51.3	51.0	51.5
No Insurance	2,524	1.7	1.6	1.7
Other/Unknown	1,082	0.7	0.7	0.8
<b>Total</b>	<b>151,167</b>	<b>100.0</b>	<b>100.0</b>	<b>100.0</b>

Source: California Department of Health Services, Center for Health Statistics, Vital Statistics, 2002.

# Number of Live Births by Zip Code\* and Service Planning Area (SPA)

Los Angeles County, 2002



\* Los Angeles County zip code boundaries as of April 2002

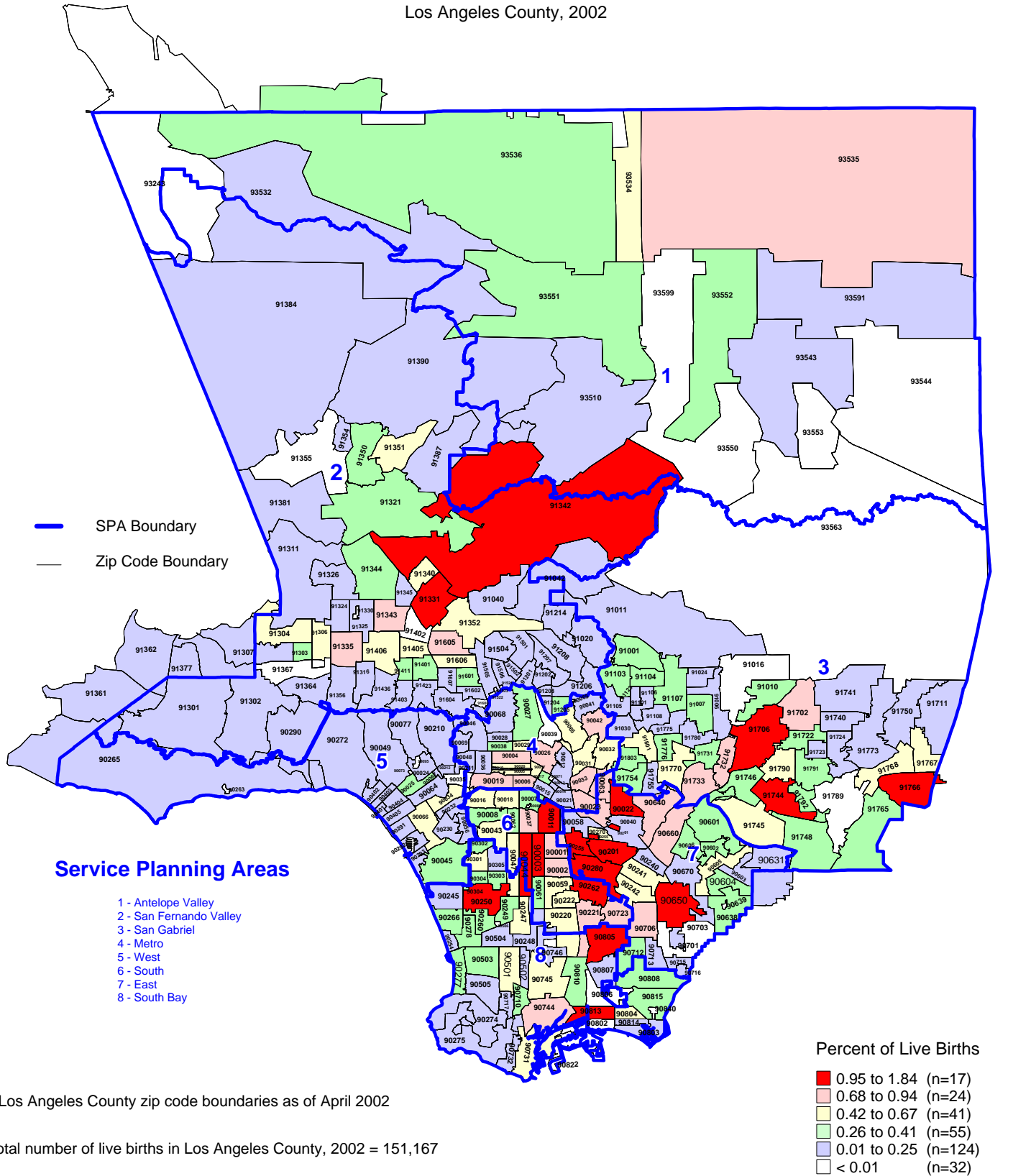
Total number of live births in Los Angeles County, 2002 = 151,167

Source: California Department of Health Services,  
Center for Health Statistics, Vital Statistics, 2002

n = total number of zip codes in range

# Percent of Live Births by Zip Code\* and Service Planning Area (SPA)

Los Angeles County, 2002



### Service Planning Areas

- 1 - Antelope Valley
- 2 - San Fernando Valley
- 3 - San Gabriel
- 4 - Metro
- 5 - West
- 6 - South
- 7 - East
- 8 - South Bay

### Percent of Live Births

- 0.95 to 1.84 (n=17)
- 0.68 to 0.94 (n=24)
- 0.42 to 0.67 (n=41)
- 0.26 to 0.41 (n=55)
- 0.01 to 0.25 (n=124)
- < 0.01 (n=32)

\* Los Angeles County zip code boundaries as of April 2002

Total number of live births in Los Angeles County, 2002 = 151,167

Note: Percent of live births is the number of live births in each zip code divided by the total number of live births in Los Angeles County multiplied by 100

n = total number of zip codes in range

Source: California Department of Health Services, Center for Health Statistics, Vital Statistics, 2002