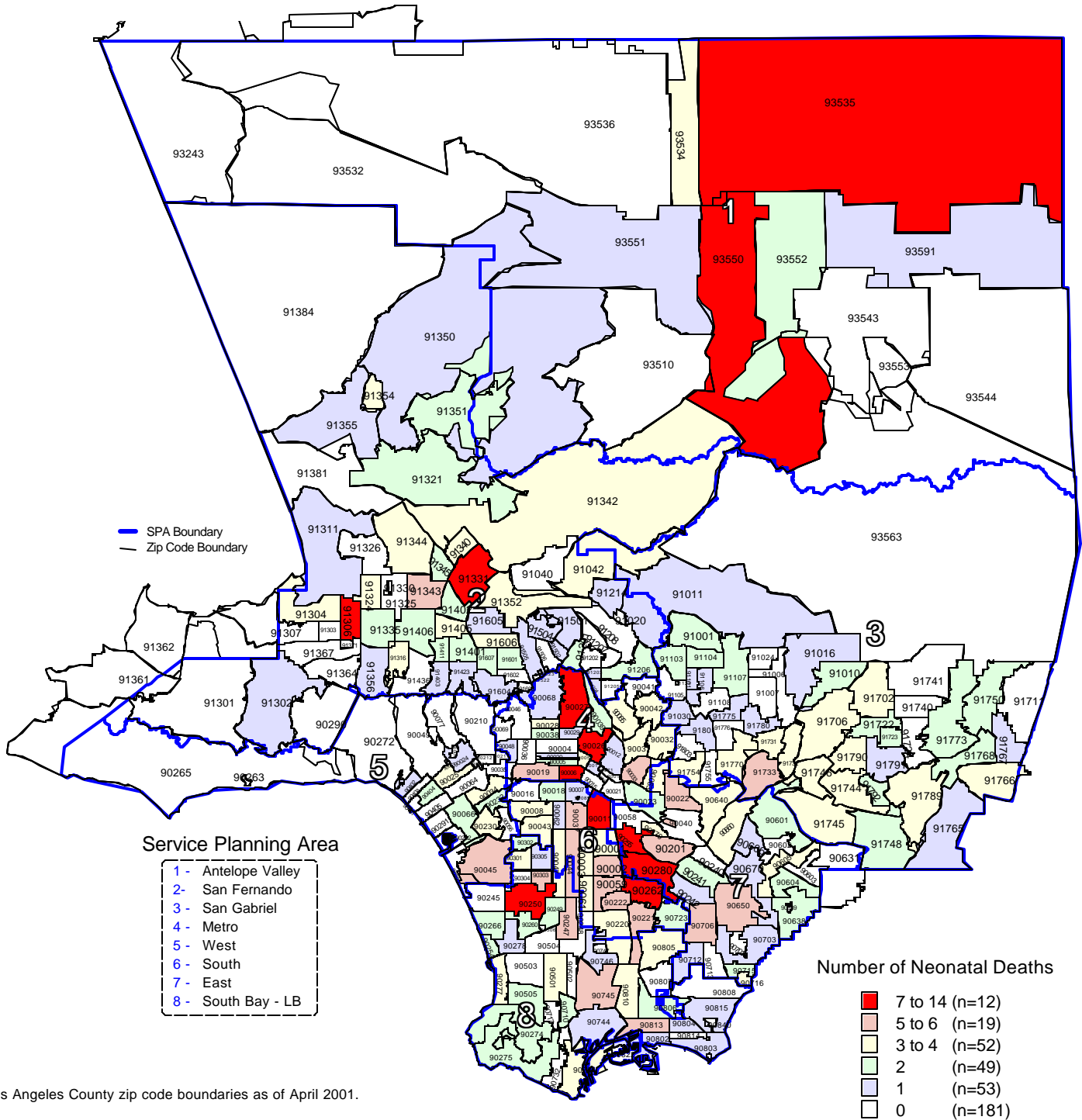


Los Angeles County - Department of Health Services  
**Number of Neonatal Deaths**  
**by Zip Code\* and Service Planning Area (SPA)**

Los Angeles County, 2001



\* Los Angeles County zip code boundaries as of April 2001.

Total number of live births in Los Angeles County, 2001 = 153,523  
 Total number of neonatal deaths in Los Angeles County, 2001 = 551

Note: Neonatal deaths are defined as deaths occurring less than 28 days  
 Source: California Department of Health Services  
 Center for Health Statistics, Vital Statistics, 2001

n = total number of zip codes in range