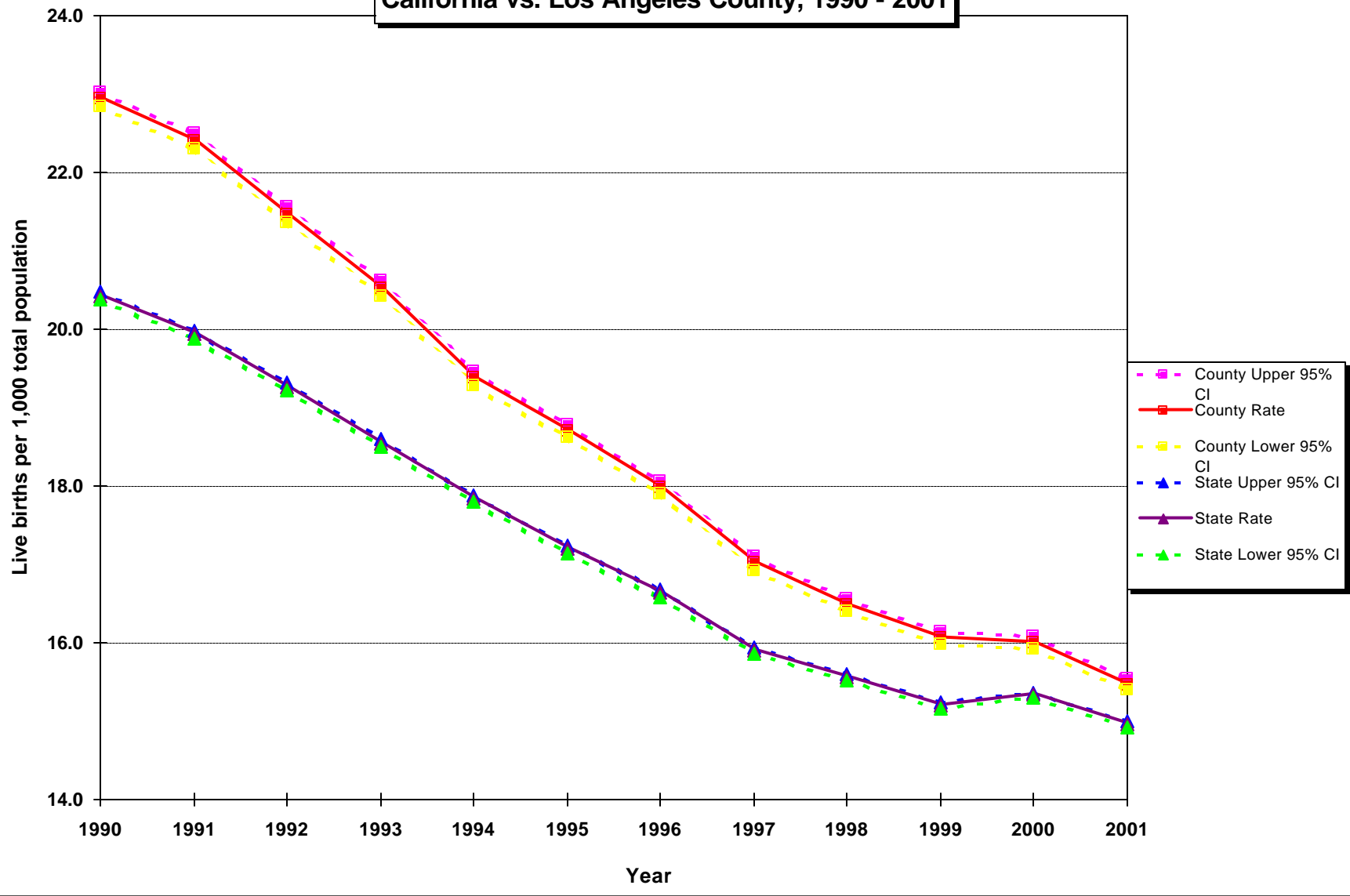


Live Births per 1,000 Total Population California vs. Los Angeles County, 1990 - 2001



Source: California Department of Health Services, Center for Health Statistics, Vital Statistics, 1990-2001

Denominator data: California Department of Finance, "Race/Ethnic Population with Age and Sex Detail, 1970-2040", Sacramento, California, December 1998