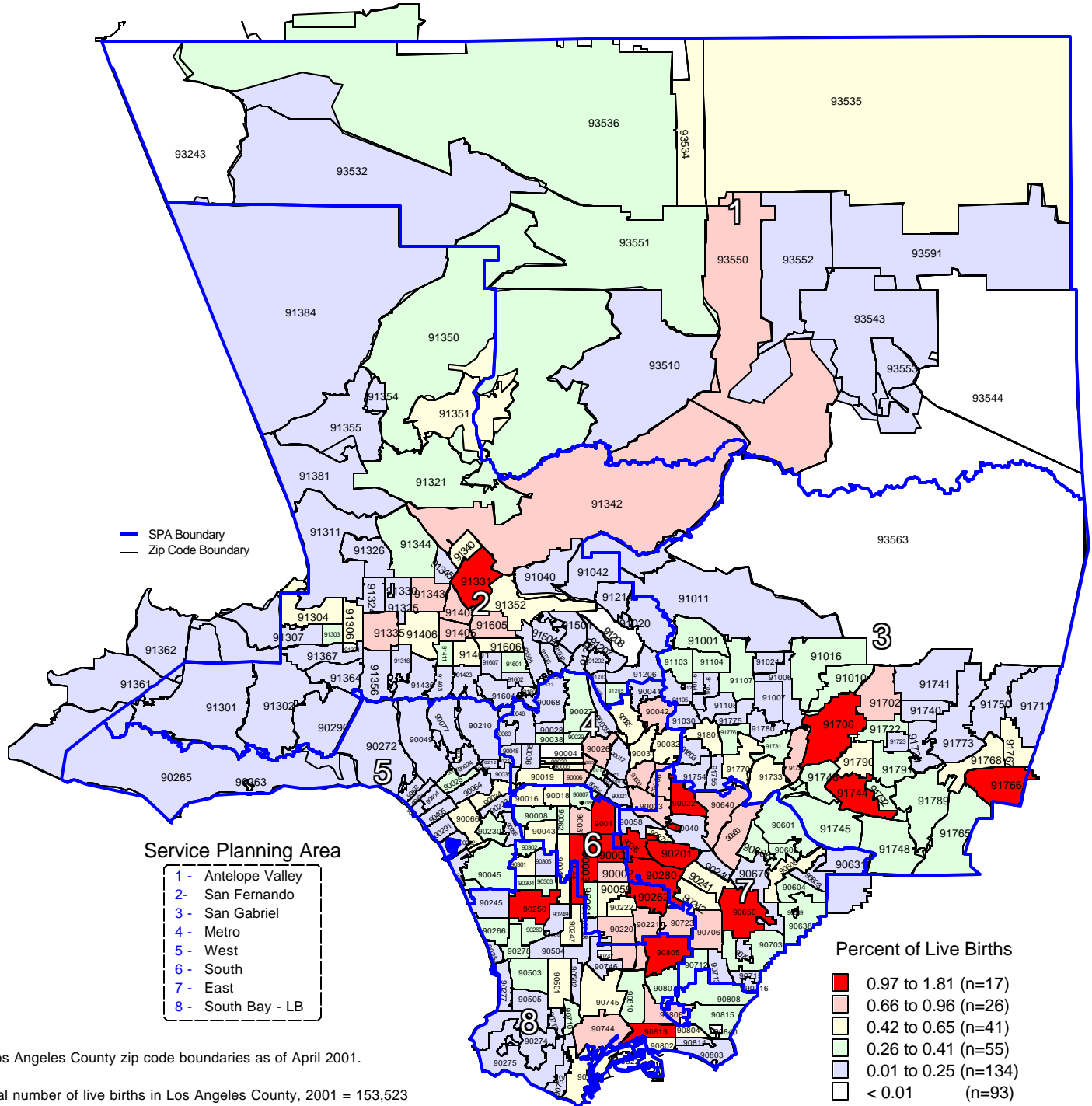


Los Angeles County - Department of Health Services  
**Percent of Live Births  
 by Zip Code\* and Service Planning Area (SPA)**

Los Angeles County, 2001



\* Los Angeles County zip code boundaries as of April 2001.

Total number of live births in Los Angeles County, 2001 = 153,523

Note: Percent of live births = the number of live births in each zip code divided by the total number of live births in Los Angeles County multiplying by 100

n = total number of zip codes in range

Source: California Department of Health Services  
 Center for Health Statistics, Vital Statistics, 2001