

# **MATERNAL HIV INFECTION**

## TITLE V INDICATOR TEMPLATES

**INDICATOR:** Maternal HIV infection

**DEFINITION:** The number of women with HIV infection per 10,000 live births\*

**NUMERATOR:** The number of HIV-positive women who delivered live-born infants as measured through the Center for Disease Control and Prevention (CDC) Anonymouse Survey of Childbearing Women, (SCW), adjusted for survival period by county of occurrence, in a calendar year

**DENOMINATOR:** The total number of blood specimens tested through the CDC SCW, by county of occurrence, in a calendar year

**HEALTHY PEOPLE 2010 OBJECTIVE:**

Confine the prevalence of HIV infection among women giving birth to live-born infants to no more than 100 per 100,000.  
(Baseline:150 per 100,000 in 1989) (Objective 18.2c)

**RISK FACTORS:** Young maternal age/teenage pregnancy; low income; race/ethnicity; substance use/abuse (IDU); addiction to crack cocaine; trading sex for drugs/money; transfusion; high risk/unsafe sexual practices (e.g., anal intercourse; multiple sexual partners; high risk sexual partners including injection drug users, HIV-infected, or homosexual contacts)

California Maternal HIV Infection					
Year	Number tested	Number HIV+	Rate (per 10,000)	Lower 95% CI	Upper 95% CI
1988-1990	430,586	299	6.9	6.2	7.7
1992	150,494	106	7.0	5.7	8.4
1994	143,095	105	7.3	5.9	8.7
1995	135,991	88	6.5	5.1	7.8

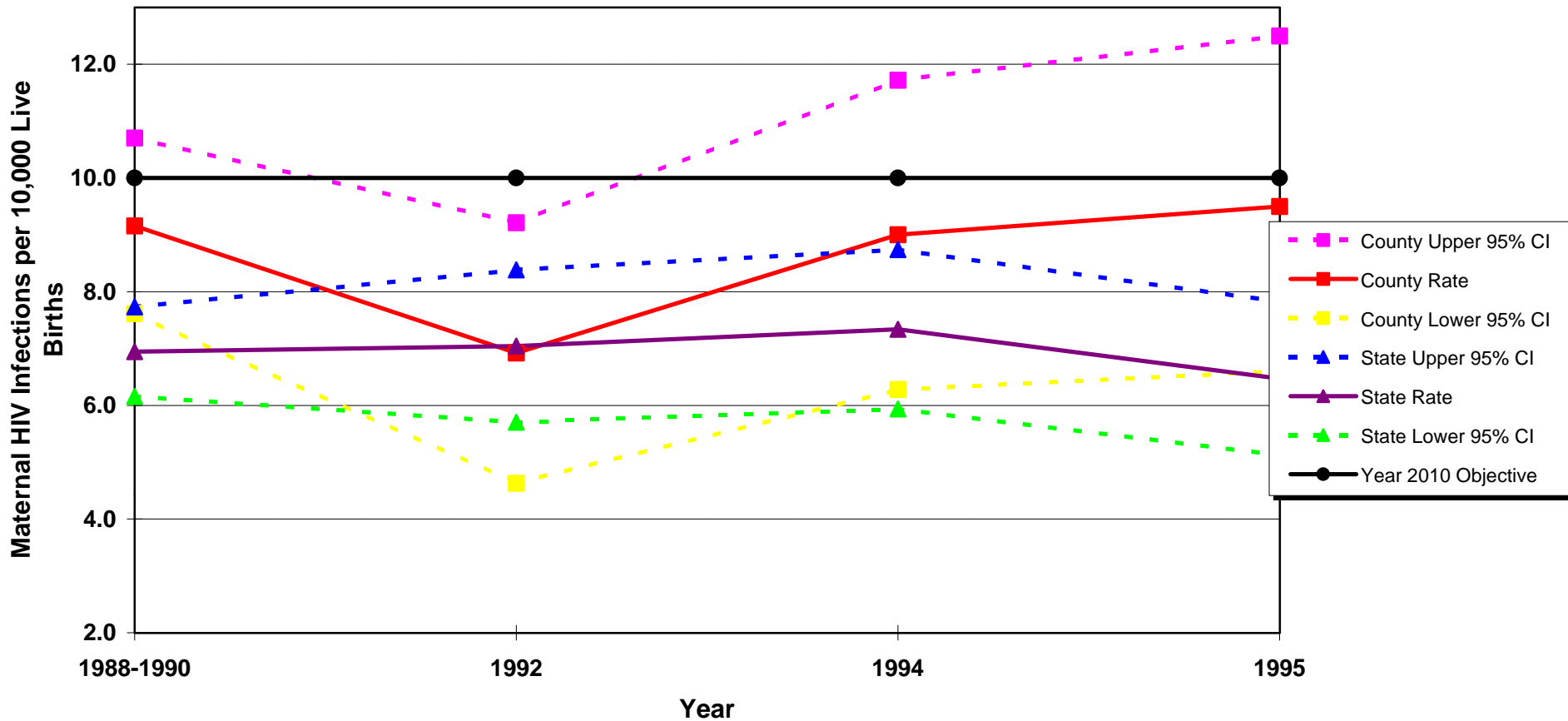
County Maternal HIV Infection					
Year	Number tested	Number HIV+	Rate (per 10,000)	Lower 95% CI	Upper 95% CI
1988-1990	147,411	135	9.2	7.6	10.7
1992	50,561	35	6.9	4.6	9.2
1994	46,667	42	9.0	6.3	11.7
1995	41,989	40	9.5	6.6	12.5

**Sources:** California Department of Health Services, Office of AIDS, HIV/AIDS Epidemiology Branch  
"California HIV/AIDS Update", 1992

California Department of Health Services, Office of AIDS, HIV/AIDS Epidemiology Branch  
"HIV Seroprevalence in CA Childbearing Women", 1995

**Note:** As estimated through the CDC Anonymouse Survey in Childbearing Women (SCW) using leftover heel-stick blood taken from newborn infants in participating states.

## Maternal HIV Infection per 10,000 Live Births California vs. Los Angeles County 1988-1990 Average, 1992, 1994, 1995

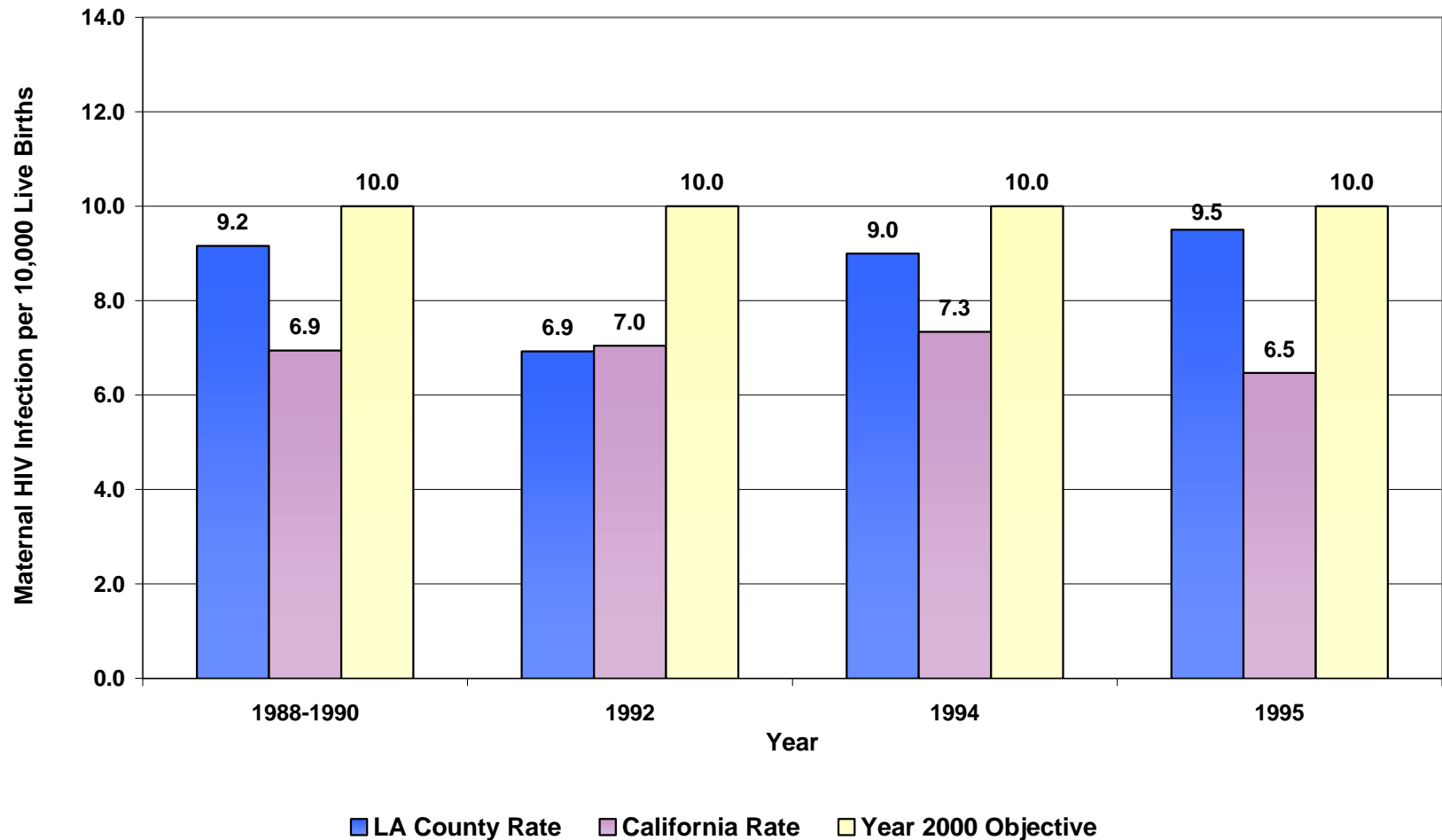


**Year 2010 Objective:** Confine the prevalence of HIV infection among women giving birth to live-births infants to no more than 100 per 100,000

**Note:** As estimated through the CDC Anonymous Survey in Childbearing Women (SCW) using leftover heel-stick blood taken from newborn infants in participating states.

**Sources:** California Department of Health Services, Office of AIDS, HIV/AIDS Epidemiology Branch, "California HIV/AIDS Update", 1992

**Maternal HIV Infection Per 10,000 Live Births  
California vs. Los Angeles County  
1988-1990 Average, 1992, 1994, 1995**



**Year 2000 Objective:** Confine the prevalence of HIV infection among women giving birth to live-births infants to no more than 100 per 100,000

**Note:** As estimated through the CDC Anonymous Survey in Childbearing Women (SCW) using leftover heel-stick blood taken from newborn infants in participating states.

**Sources:** California Department of Health Services, Office of AIDS, HIV/AIDS Epidemiology Branch, "California HIV/AIDS Update", 1992