

# FETAL DEATH

**TITLE V INDICATOR TEMPLATES**

**INDICATOR: Fetal deaths**

**DEFINITION:** The number of fetal deaths of 20 weeks or more gestational age per 1,000 live births plus fetal deaths

**NUMERATOR:** The number of fetal deaths of 20 weeks or more gestation, by place of residence, in a calendar year

**DENOMINATOR:** The total number of live births plus fetal deaths, by place of residence, in a calendar year

**HEALTHY PEOPLE 2010 OBJECTIVE:**

Reduce the fetal death rate (20 or more weeks of gestation) to no more than 4.1 per 1,000 live births plus fetal deaths. (Baseline: 6.8 per 1,000 live births plus fetal deaths in 1997) (Objective 16.1a)

**RISK FACTORS:** Race/ethnicity (African American); maternal diabetes; pregnancy complications; maternal medical complications/chronic illness during pregnancy (including severe maternal infection); Rh sensitization; congenital anomalies; intrauterine cocaine exposure; maternal history of miscarriage

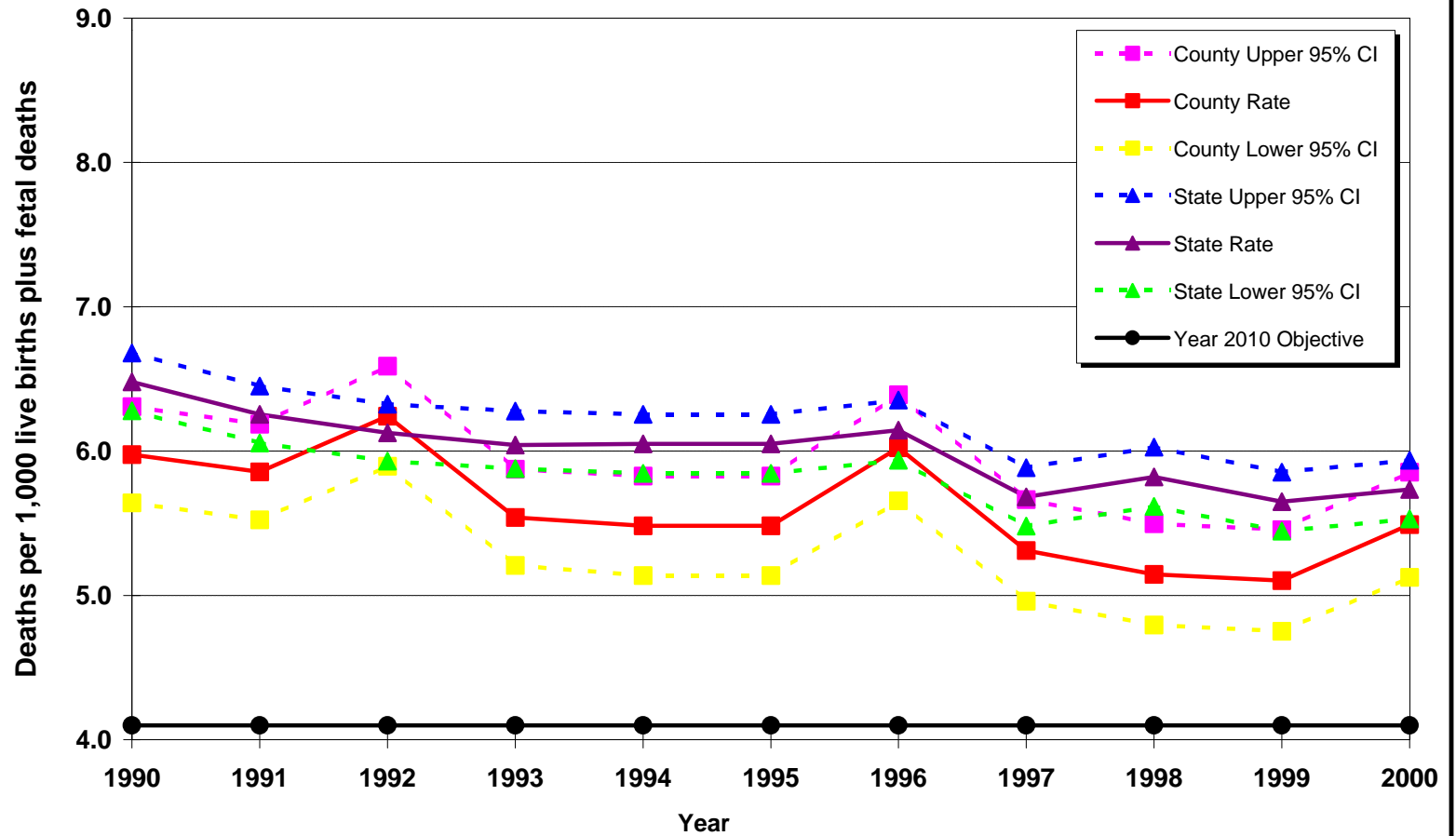
Year	California				LA County			
	Fetal Death		95% Confidence Interval		Fetal Death		95% Confidence Interval	
	Number	Rate	Lower	Upper	Number	Rate	Lower	Upper
1990	3,989	6.5	6.3	6.7	1,227	6.0	5.6	6.3
1991	3,834	6.3	6.1	6.5	1,194	5.9	5.5	6.2
1992	3,704	6.1	5.9	6.3	1,240	6.2	5.9	6.6
1993	3,574	6.0	5.9	6.3	1,057	5.5	5.2	5.9
1994	3,299	5.8	5.6	6.0	1,018	5.6	5.3	6.0
1995	3,355	6.0	5.8	6.3	964	5.5	5.1	5.8
1996	3,330	6.1	5.9	6.4	1,024	6.0	5.7	6.4
1997	2,996	5.7	5.5	5.9	866	5.3	5.0	5.7
1998	3,053	5.8	5.6	6.0	821	5.1	4.8	5.5
1999	2,927	5.6	5.4	5.9	801	5.1	4.8	5.5
2000	3,046	5.7	5.5	5.9	864	5.5	5.1	5.9

DENOMINATOR: Total Births*	
California	LA County
615,655	205,351
613,062	203,931
604,542	198,655
588,057	190,763
570,333	181,412
554,581	175,826
541,958	169,997
527,268	163,030
524,442	159,555
518,073	156,954
531,285	157,391

**Source:** California Department of Health Services, Center for Health Statistics, Vital Statistics, 1990-2000

**Note:** \* Total births = number of live births + number of fetal deaths

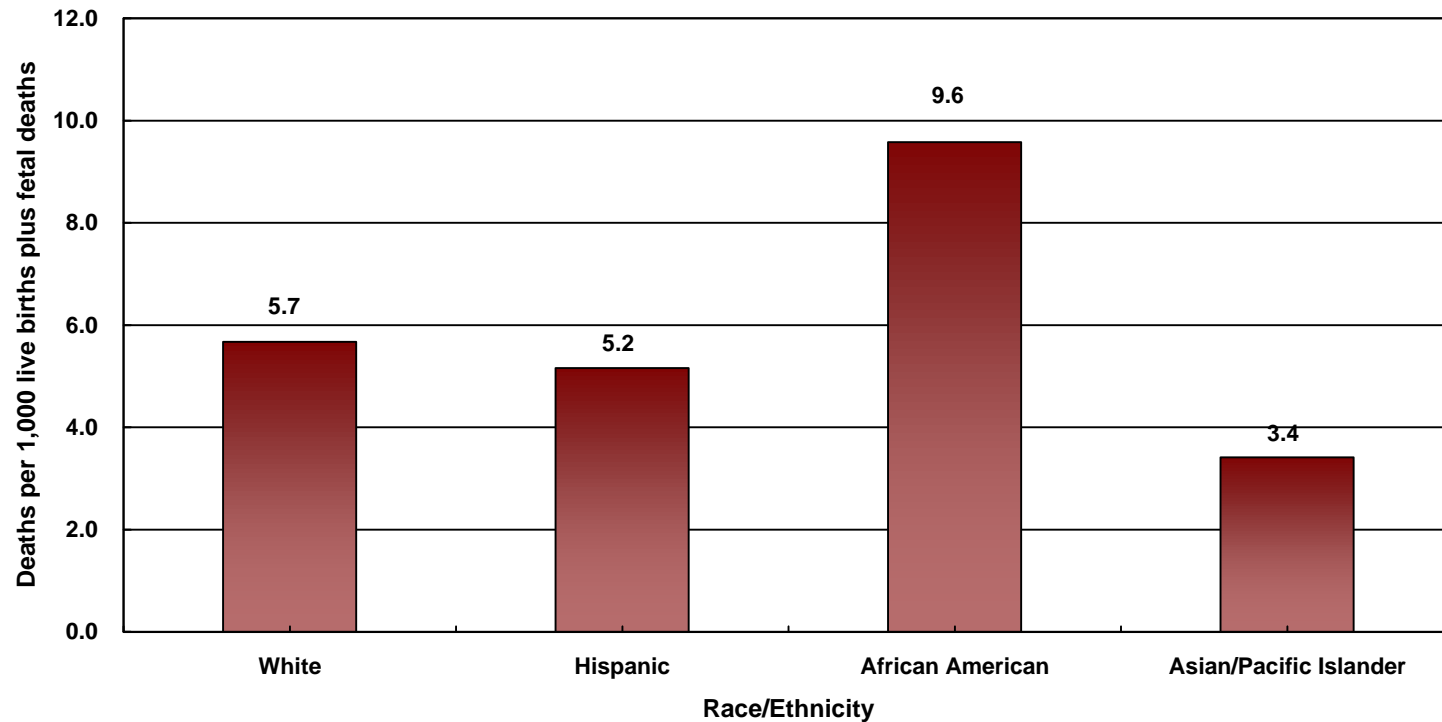
### Fetal Deaths per 1,000 Live Births plus Fetal Deaths California vs. Los Angeles County, 1990 - 2000



**Year 2010 Objective:** Reduce the fetal death rate (20 or more weeks of gestation) to no more than 4.1 per 1,000 live births plus fetal deaths.  
**Source:** California Department of Health Services, Center for Health Statistics, Vital Statistics, 1990-2000

## Fetal Mortality Rate by Mother's Race/Ethnicity\*

### Los Angeles County, 2000



Race/Ethnicity	Los Angeles County, 2000			
	Fetal Mortality		95% Confidence Interval	
	Number	Rate	Lower	Upper
White	165	5.7	4.8	6.5
Hispanic	504	5.2	4.7	5.6
African American	129	9.6	7.9	11.2
Islander	56	3.4	2.5	4.3
Native American	1	N/C**	N/C**	N/C**
Other/Unknown	9	19.5	6.9	32.2
<b>Total</b>	<b>864</b>	<b>5.5</b>	<b>5.1</b>	<b>5.9</b>

Total Births
29,094
97,719
13,468
16,401
248
461
<b>157,391</b>

\* White, African American, Asian, Native American and other races exclude Hispanic ethnicity  
Hispanic includes any race category

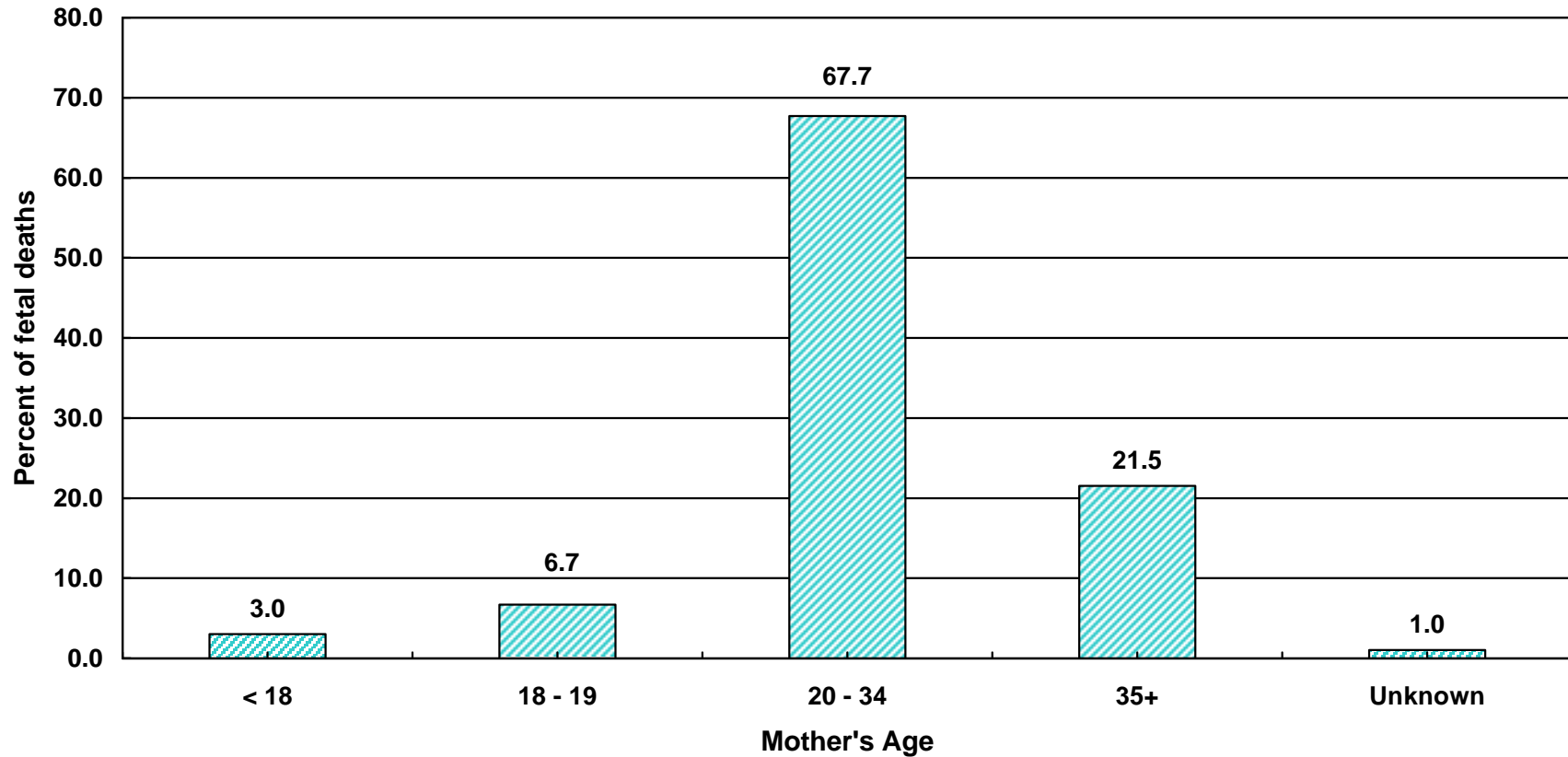
\*\* Rates are not calculated if no more than five deaths.

**Year 2010 Objective:** Reduce the fetal death rate (20 or more weeks of gestation) to no more than 4.1 per 1,000 live births plus fetal deaths.

**Note:** Fetal mortality rates are fetal deaths per 1,000 live births plus fetal deaths. Fetal deaths are those occurring during 20 weeks or more gestational period.

**Source:** California Department of Health Services, Center for Health Statistics, Vital Statistics, 2000

## Percent of Fetal Deaths by Mother's Age Los Angeles County, 2000



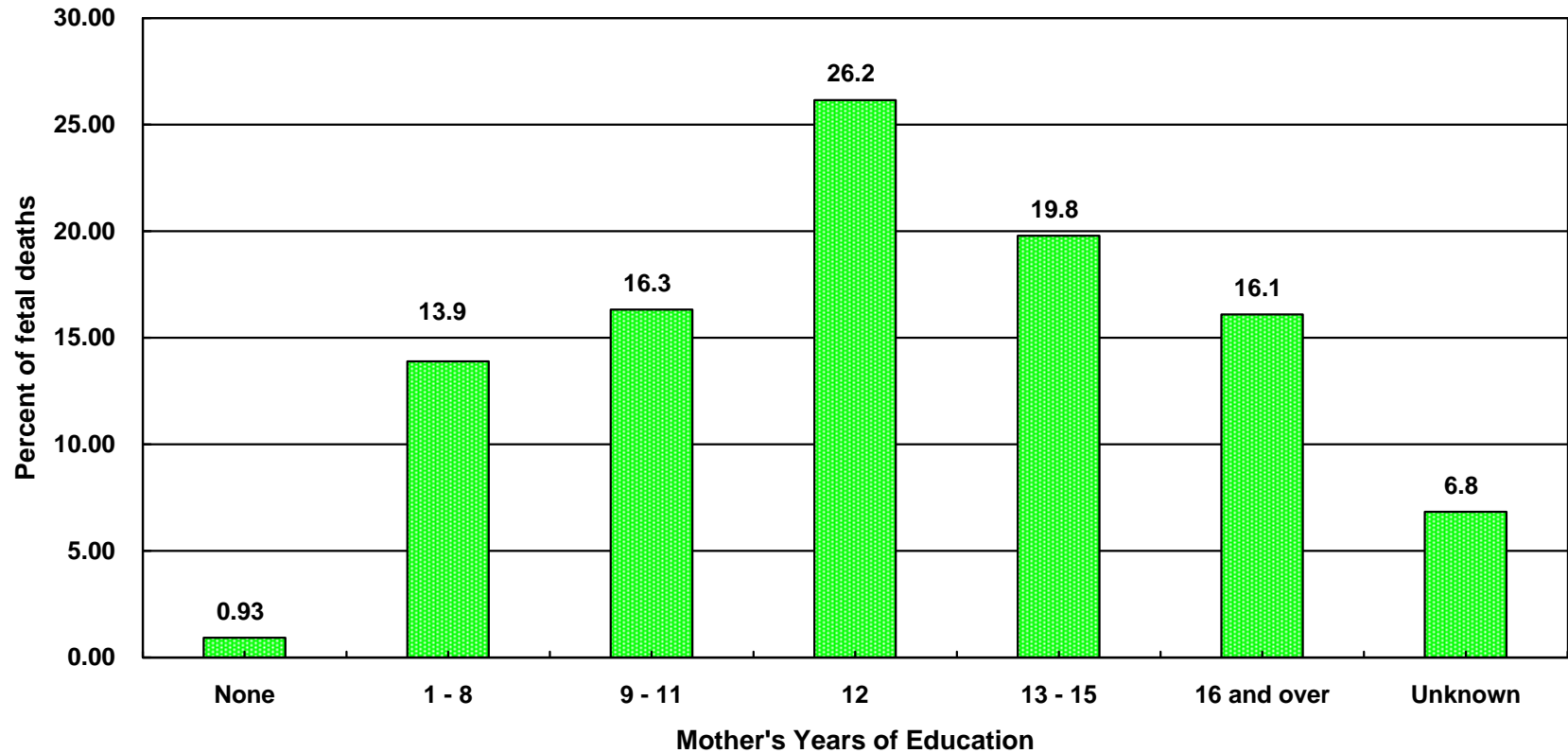
Mother's Age									
< 18		18 - 19		20 - 34		35+		Unknown	
Number	Percent	Number	Percent	Number	Percent	Number	Percent	Number	Percent
26	3.0	58	6.7	585	67.7	186	21.5	9	1.0

**Note:** Total fetal deaths in 2000 was 864

Fetal deaths are those occurring during 20 weeks or more gestational period.

**Source:** California Department of Health Services, Center for Health Statistics, Vital Statistics, 2000

## Percent of Fetal Deaths by Mother's Years of Education Los Angeles County, 2000



Years of Education													
None		1 - 8		9 - 11		12		13 - 15		16 and over		Unknown	
Number	Percent	Number	Percent	Number	Percent	Number	Percent	Number	Percent	Number	Percent	Number	Percent
8	0.9	120	13.9	141	16.3	226	26.2	171	19.8	139	16.1	59	6.8

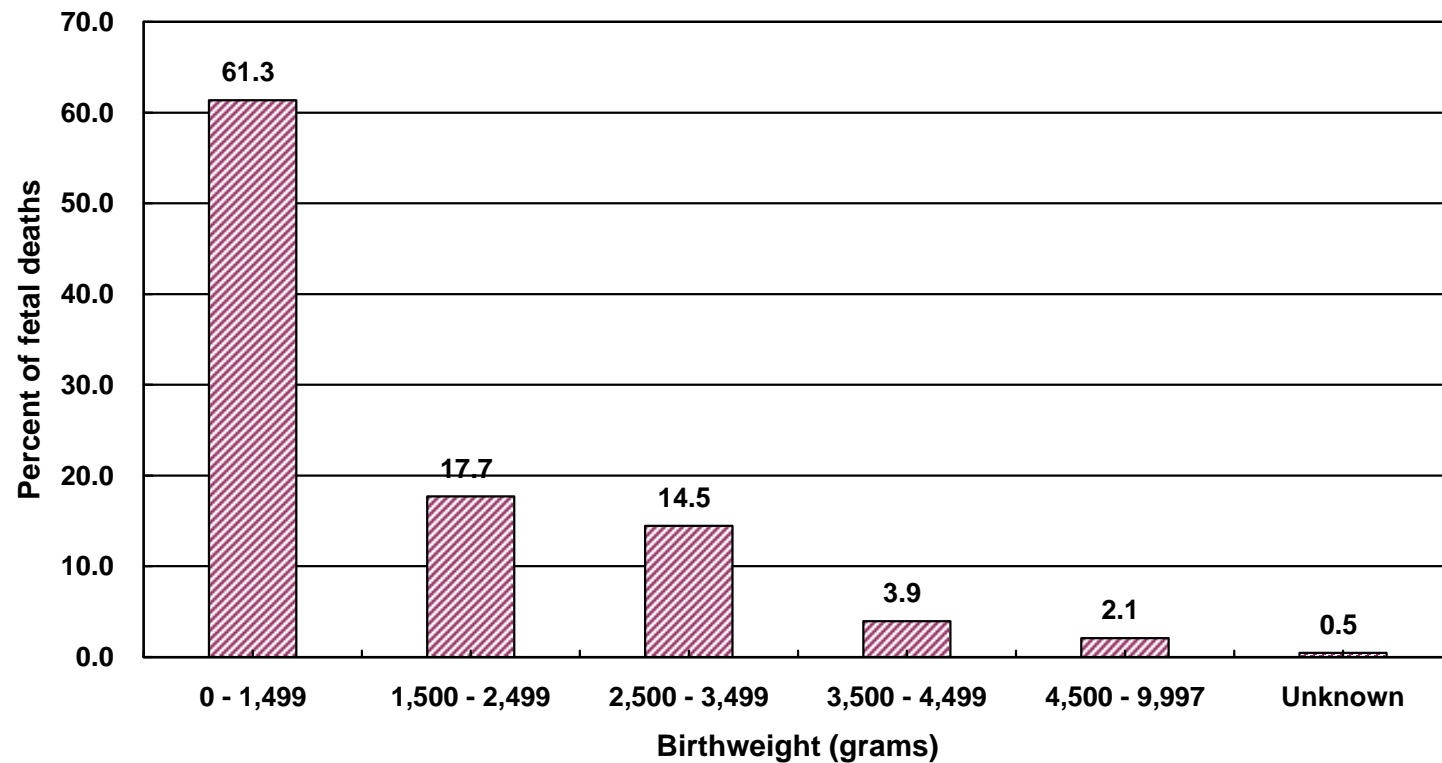
**Note:** Total fetal deaths in 2000 was 864

Fetal deaths are those occurring during 20 weeks or more gestational period.

This analysis did not adjust for teen mothers who may not be old enough to have reached higher categorical education level.

**Source:** California Department of Health Services, Center for Health Statistics, Vital Statistics, 2000

## Percent of Fetal Deaths by Birthweight Category Los Angeles County, 2000



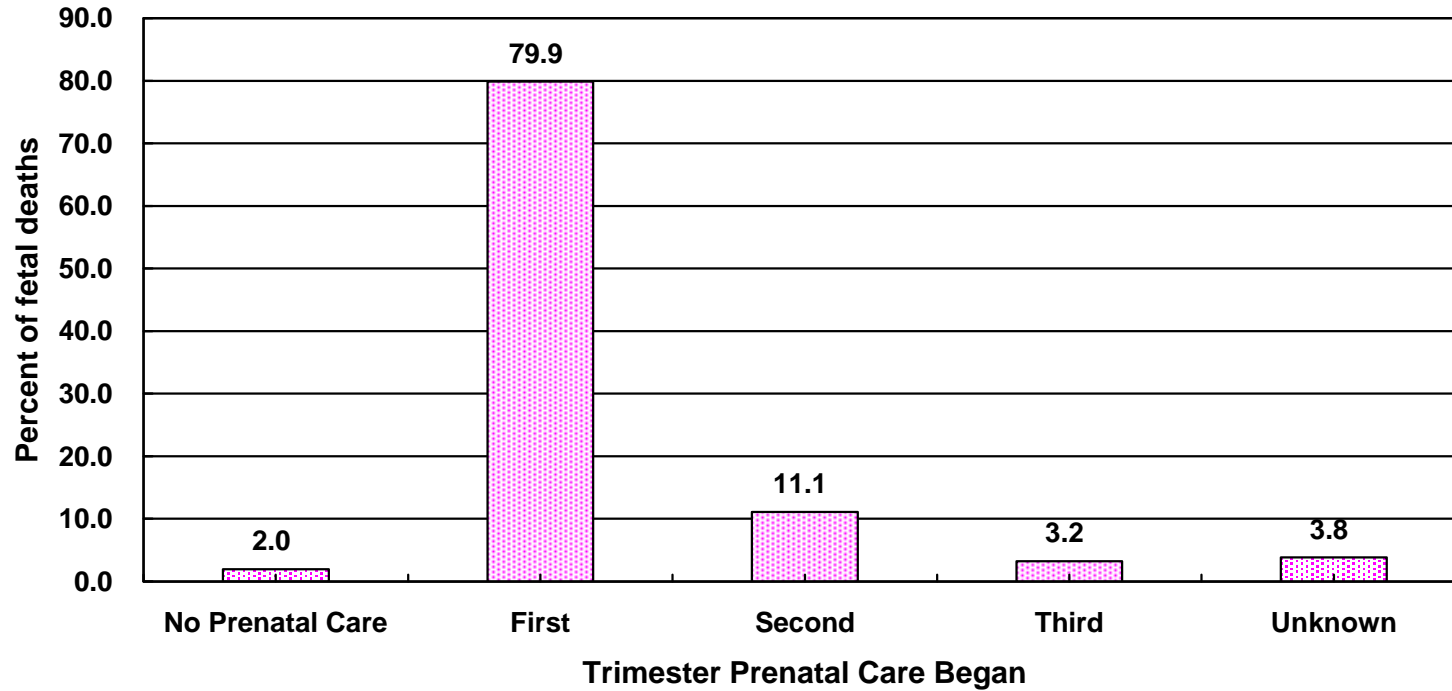
Birthweight (grams)											
0 - 1,499		1,500 - 2,499		2,500 - 3,499		3,500 - 4,499		4,500 - 9,997		Unknown	
Number	Percent	Number	Percent	Number	Percent	Number	Percent	Number	Percent	Number	Percent
530	61.3	153	17.7	125	14.5	34	3.9	18	2.1	4	0.5

**Note:** Total fetal deaths in 2000 was 864

Fetal deaths are those occurring during 20 weeks or more gestational period.

**Source:** California Department of Health Services, Center for Health Statistics, Vital Statistics, 2000

**Percent of Fetal Deaths  
by Mother's Trimester Prenatal Care Began  
Los Angeles County, 2000**



Trimester Prenatal Care Began									
No Prenatal Care		First		Second		Third		Unknown	
Number	Percent	Number	Percent	Number	Percent	Number	Percent	Number	Percent
17	2.0	690	79.9	96	11.1	28	3.2	33	3.8

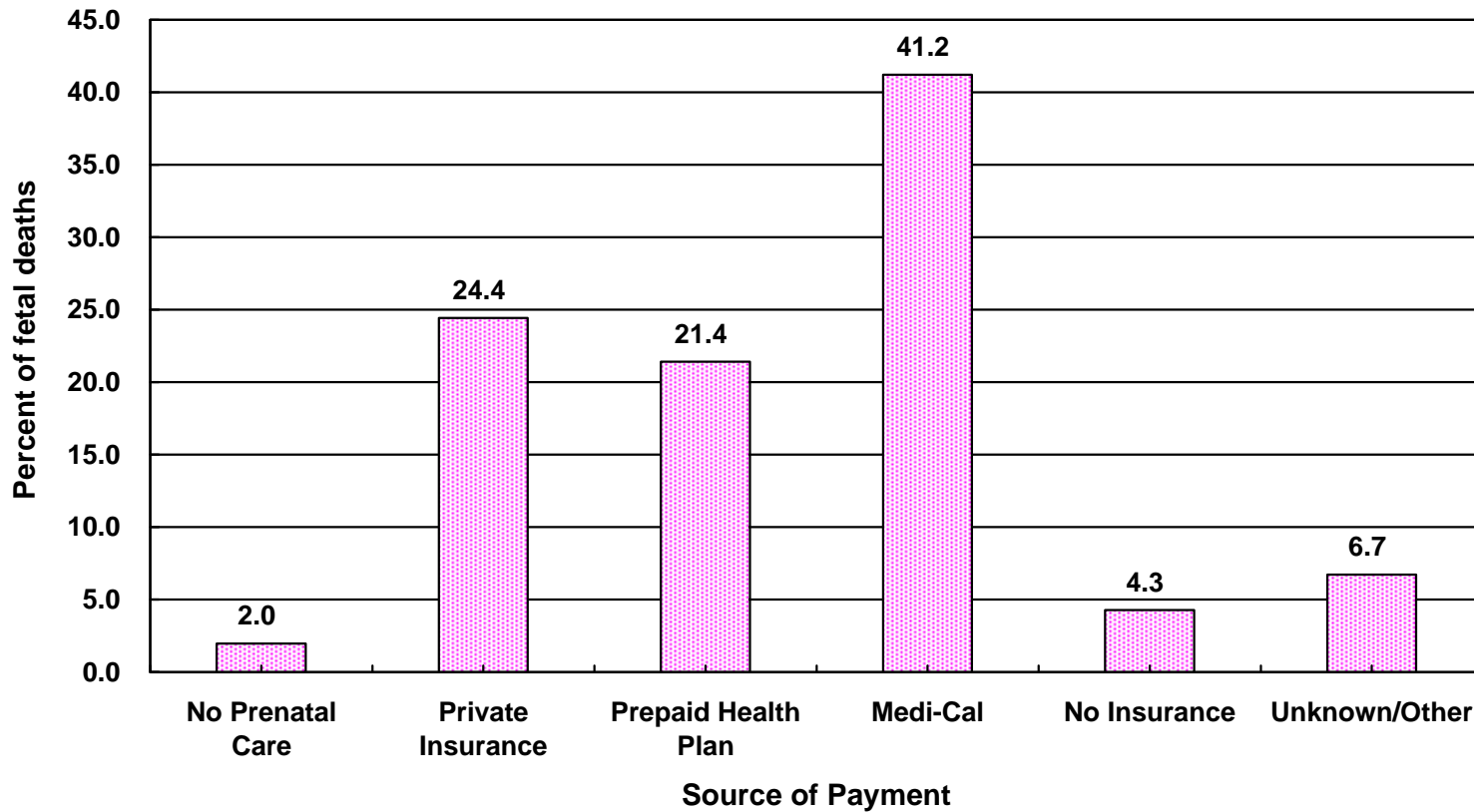
**Note:** Total fetal deaths in 2000 was 864

Fetal deaths are those occurring during 20 weeks or more gestational period.

**Source:** California Department of Health Services, Center for Health Statistics, Vital Statistics, 2000



**Percent of Fetal Deaths by Source of Payment  
for Prenatal Care (PNC)  
Los Angeles County, 2000**



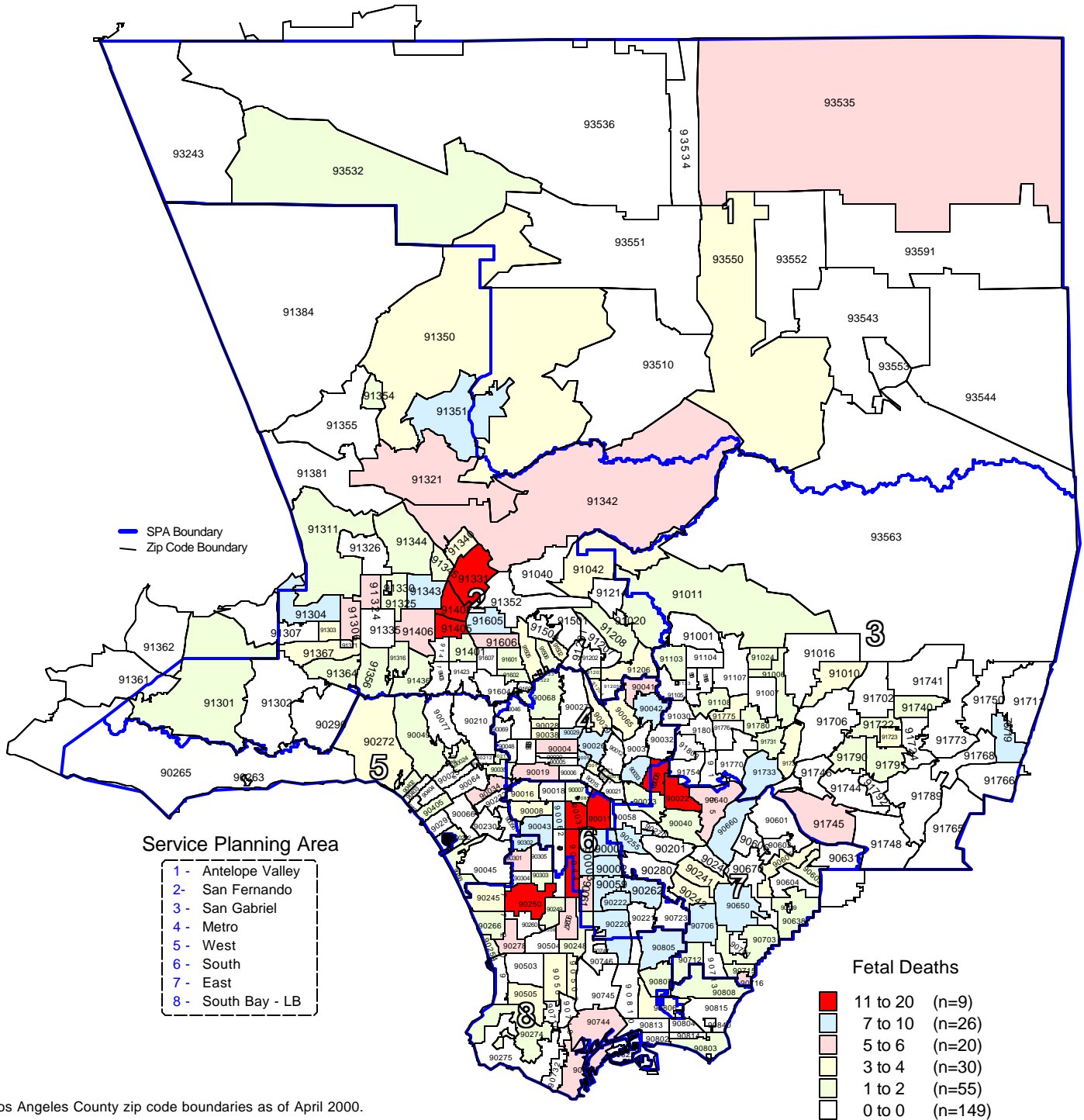
Source of Payment											
No Prenatal Care		Private Insurance		Prepaid Health Plan		Medi-Cal		No Insurance		Unknown/Other	
Number	Percent	Number	Percent	Number	Percent	Number	Percent	Number	Percent	Number	Percent
17	2.0	211	24.4	185	21.4	356	41.2	37	4.3	58	6.7

**Note:** Total fetal deaths in 2000 was 864

Fetal deaths are those occurring during 20 weeks or more gestational period.

**Source:** California Department of Health Services, Center for Health Statistics, Vital Statistics, 2000

Los Angeles County - Department of Health Services  
**Number of Fetal Deaths**  
**by Zip Code\* and Service Planning Area (SPA)**  
 Los Angeles County, 2000



\* Los Angeles County zip code boundaries as of April 2000.

Total Number of live births in Los Angeles County, 2000 = 157,391

Total Number of fetal deaths in Los Angeles County, 2000 = 864

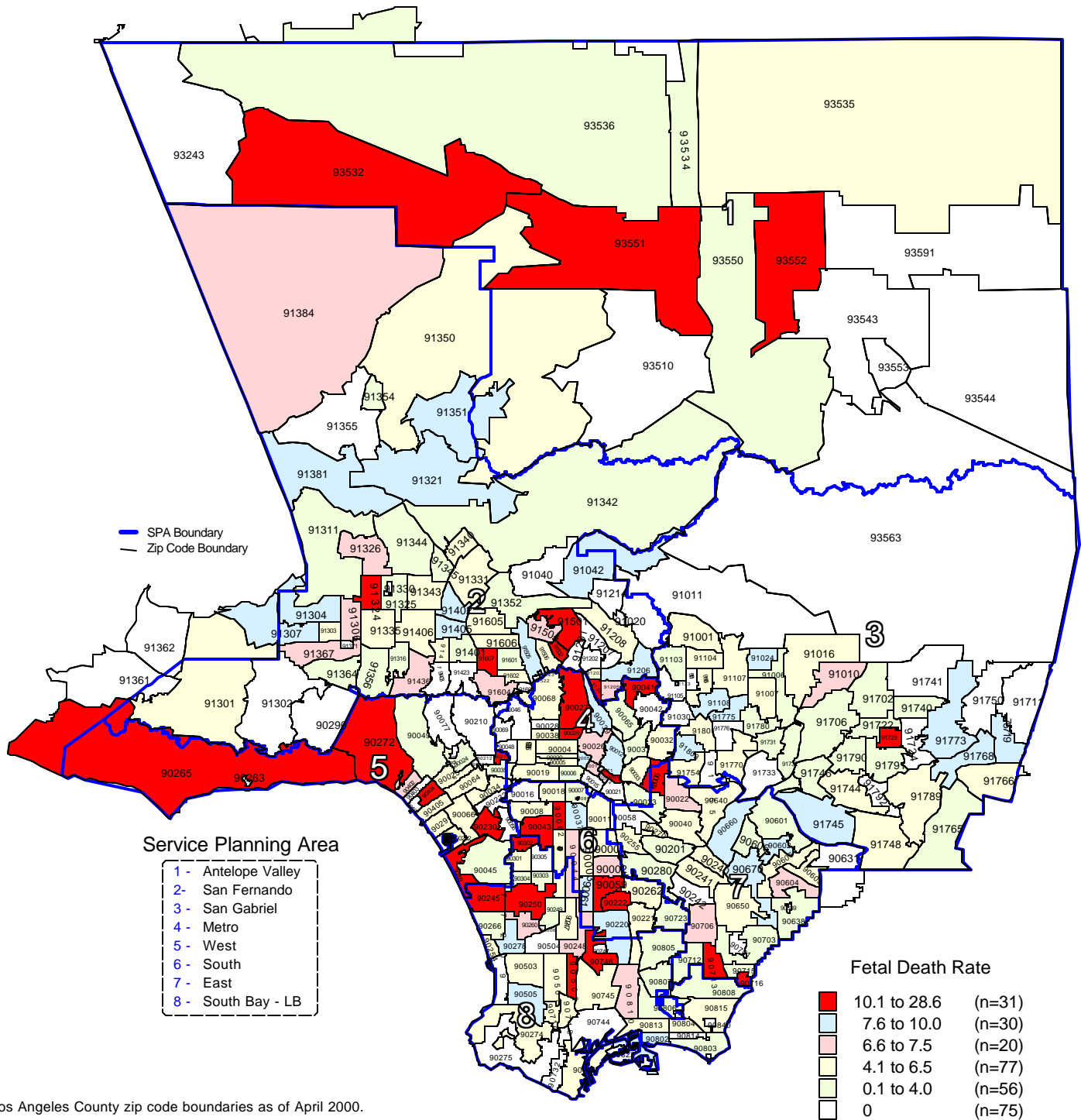
Note: Fetal Deaths is defined as death occurring during 20 weeks or more gestational period

Source: California Department of Health Services  
 Center for Health Statistics, Vital Statistics, 2000

n = total number of zip codes in range

# Fetal Mortality Rate by Zip Code\* and Service Planning Area (SPA)

Los Angeles County, 2000



\* Los Angeles County zip code boundaries as of April 2000.

Total Number of live births in Los Angeles County, 2000 = 157,391

Total Number of fetal deaths in Los Angeles County, 2000 = 864

Note: Fetal Mortality Rate is defined as death occurring during 20 weeks or more gestational period per 1,000 live births plus fetal deaths

Source: California Department of Health Services  
Center for Health Statistics, Vital Statistics, 2000

n = total number of zip codes in range