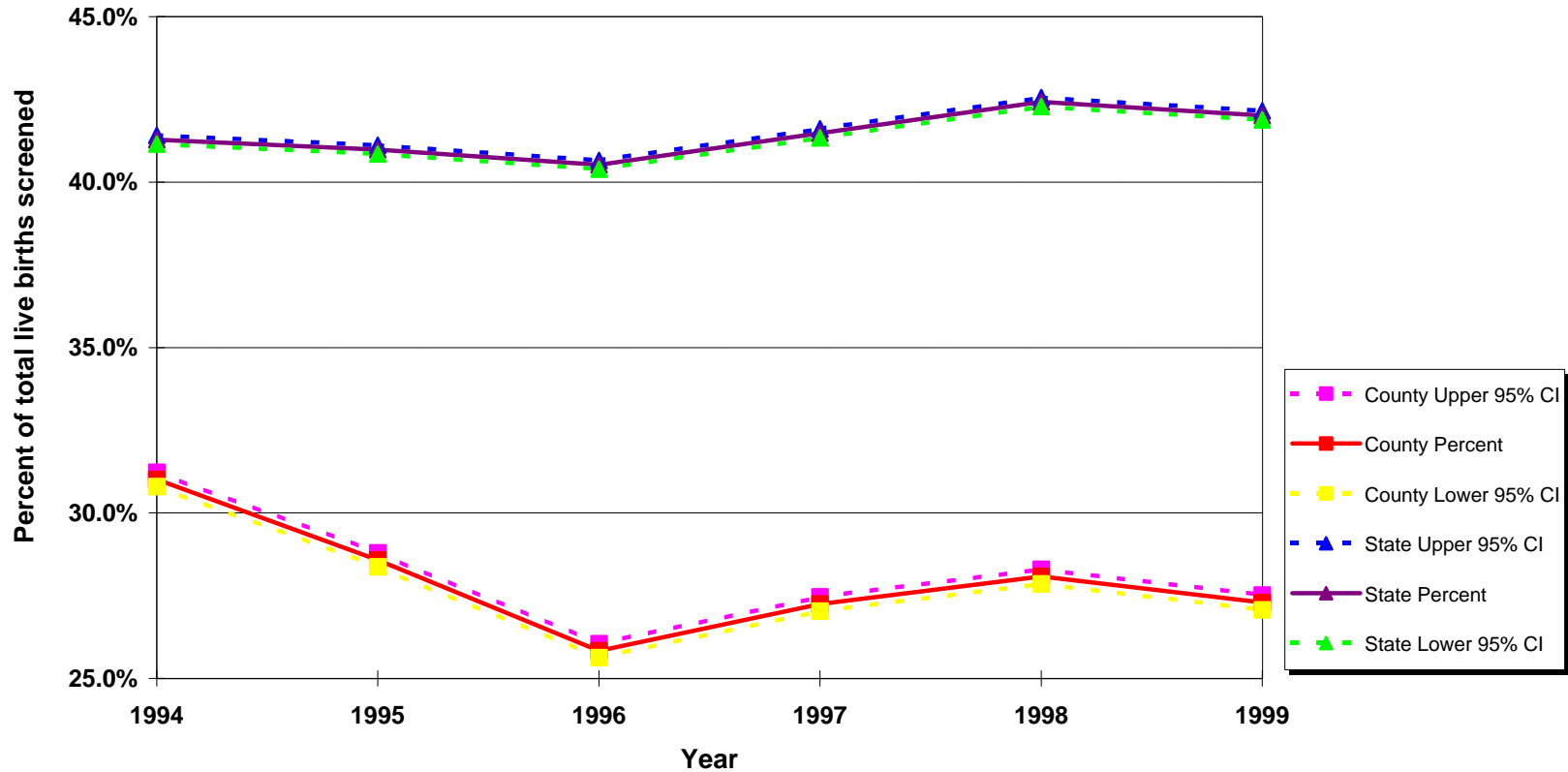


## Percent of Mothers who Intend to Exclusively Breastfeed Their Infants at Hospital Discharge California vs. Los Angeles County 1994 - 1999



**Note:** These data represent in-hospital breastfeeding choices as indicated on the newborn screening form. The breastfeeding choices include: breastfed only, both formula & breastfed, breastfed only, non-breastfed and unknown. Between 1994 to 1999, the rates for any types of breastfeeding increased from 71% to 77%.

**Source:** California Department of Health Services, Maternal and Child Health Branch, Epidemiology and Evaluation Section, "In-Hospital Breastfeeding Choices as Indicated on the Newborn Screening Form by Race/Ethnicity", California, 1994-1998  
California Department of Health Services, Maternal and Child Health Branch, Epidemiology and Evaluation Section, "In-Hospital Breastfeeding as Indicated on the Newborn Screening Form by Race/Ethnicity", California, 1997-1999