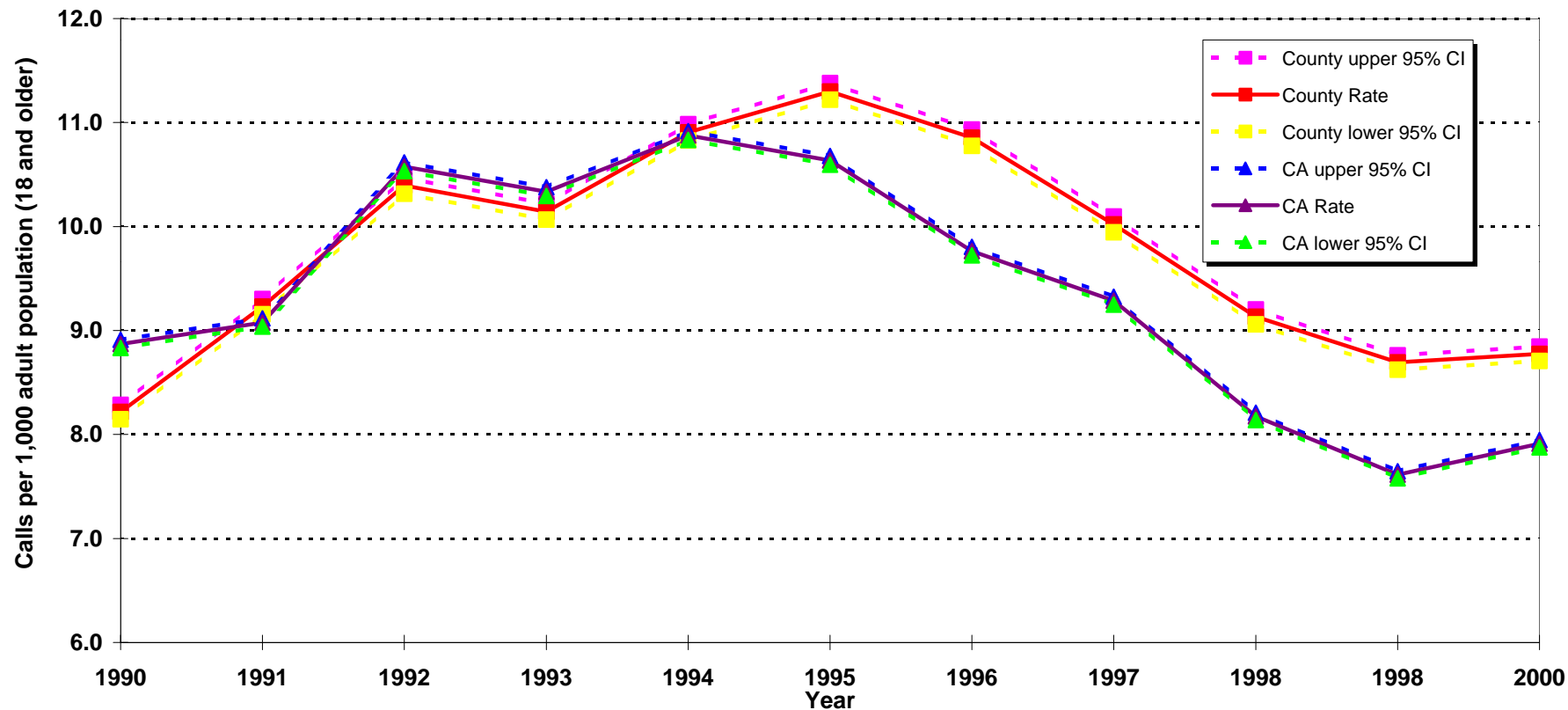


Domestic Violence Calls to Law Enforcement Agencies per 1,000 Adult Population Ages 18 and Older California vs. Los Angeles County, 1990 - 2000



Sources: California Department of Justice, Division of Law Enforcement, Law Enforcement Information Center Special Report, "Total Domestic Violence Calls Received by Type of Weapon, by County, 1990-1997", California Department of Justice, Criminal Justice Statistics Center, Criminal Justice Profiles 1998-2000
Denominator data: California Department of Finance, "1970-2040 Race/Ethnic Population Estimates for Counties with Age and Gender Detail", Sacramento, California, 2000