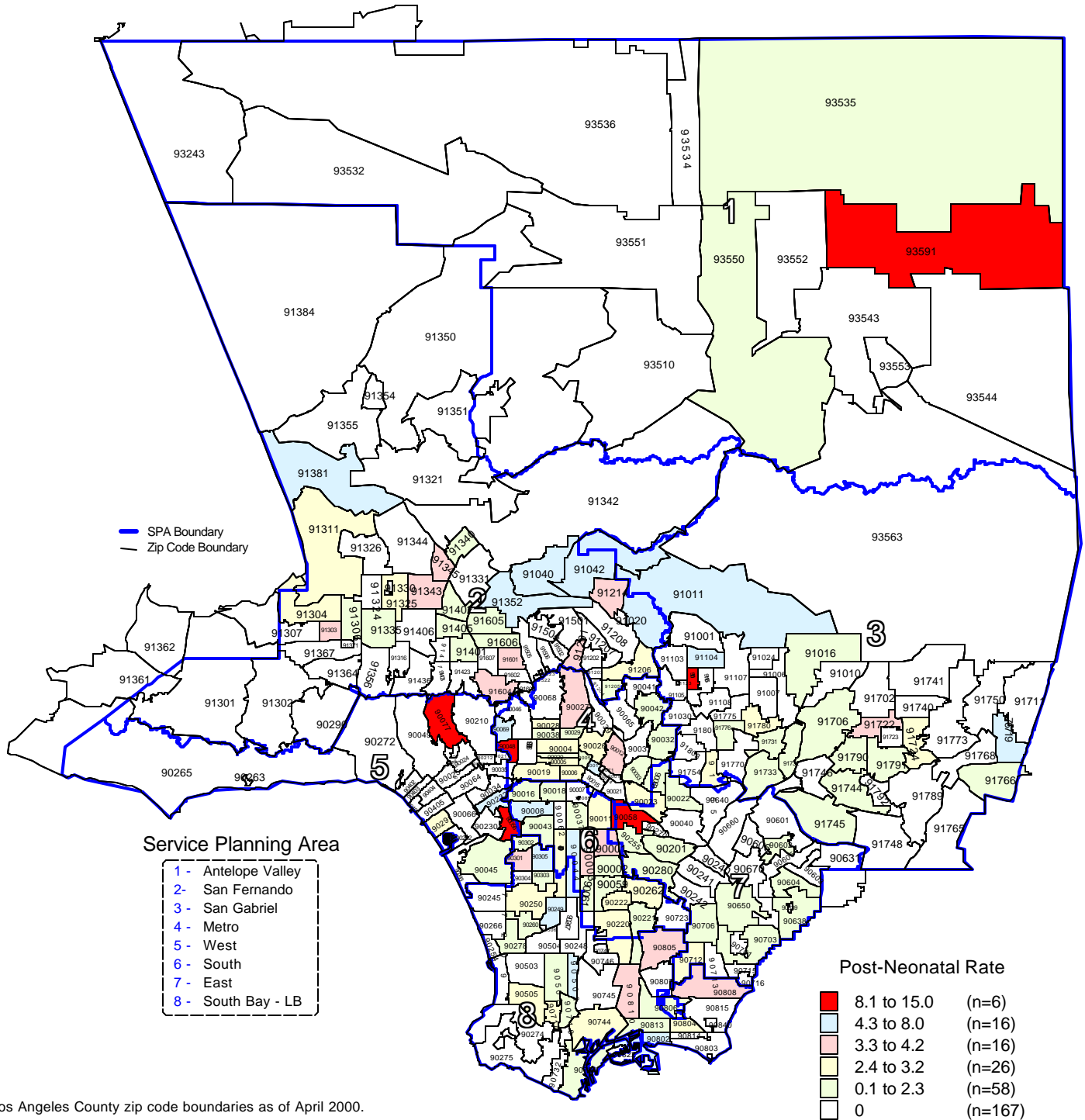


Los Angeles County - Department of Health Services
Post-Neonatal Mortality Rate
by Zip Code* and Service Planning Area (SPA)

Los Angeles County, 2000



* Los Angeles County zip code boundaries as of April 2000.

Total Number of live births in Los Angeles County, 2000 = 157,391

Total Number of post-neonatal deaths in Los Angeles County, 2000 = 246

Note: Post-neonatal deaths are defined as deaths occurring between 28 days and 365 days per 1,000 live births

Source: California Department of Health Services
 Center for Health Statistics, Vital Statistics, 2000

n = total number of zip codes in range