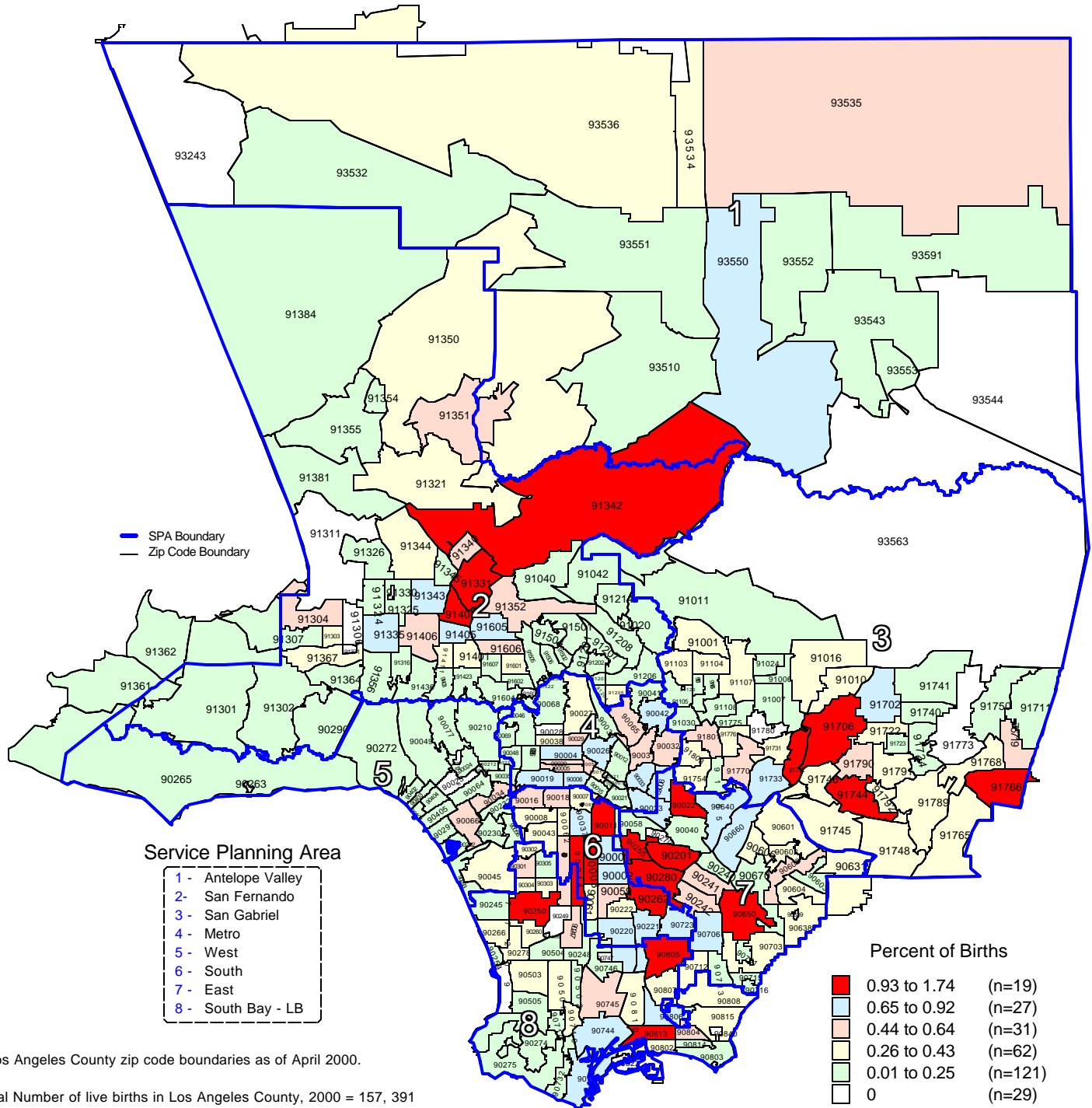


Los Angeles County - Department of Health Services
**Percent of Total Live Births
 by Zip Code* and Service Planning Area (SPA)**

Los Angeles County, 2000



* Los Angeles County zip code boundaries as of April 2000.

Total Number of live births in Los Angeles County, 2000 = 157,391

Note: Percent of live births = the number of live births in each zip code divided by the total number of live births in Los Angeles County multiplying by 100

n = total number of zip codes in range

Source: California Department of Health Services
 Center for Health Statistics, Vital Statistics, 2000