

# **Prenatal Care**

**TITLE V INDICATOR TEMPLATE**

**INDICATOR:** First Trimester Onset of Prenatal Care (PNC)

**DEFINITION:** The percent of live born infants whose mothers received prenatal care in the first trimester of pregnancy

**NUMERATOR:** The number of live births to women who received prenatal care during the first trimester, by place of residence, in a calendar year

**DENOMINATOR:** The total number of live births, by place of residence, in a calendar year

**HEALTHY PEOPLE 2010 OBJECTIVE:**

Increase the proportion of pregnant women who receive prenatal care in the first trimester of pregnancy to 90 percent of live births.  
(Baseline: 83 percent of live births in 1998) (Objective 16-6a)

**HEALTHY PEOPLE 2020 OBJECTIVE:**

Increase the proportion of pregnant women who receive prenatal care in the first trimester of pregnancy to 77.9 percent of live births.  
(Baseline: 70.8 percent of pregnant women in 2007) (Objective MICH-10.1)

**RISK FACTORS:** For not obtaining early prenatal care Low income; young maternal age/teen pregnancy; low maternal education level; race/ethnicity (African American, Hispanic, American Indian/Alaska Native); high parity; maternal substance abuse; lack of health insurance; lack of obstetric providers

Year	California				Los Angeles County			
	First Trimester Prenatal Care		95% Confidence Interval		First Trimester Prenatal Care		95% Confidence Interval	
	Number	Percent	Lower	Upper	Number	Percent	Lower	Upper
2003	464,156	85.8	85.7	85.9	136,609	89.8	89.6	89.9
2004	466,463	85.6	85.5	85.7	136,144	89.9	89.7	90.0
2005	470,955	85.8	85.7	85.9	136,020	90.5	90.3	90.6
2006	478,973	85.2	85.1	85.3	137,077	90.3	90.1	90.4
2007	459,188	80.9	80.8	81.0	129,741	85.5	85.3	85.6
2008	445,108	80.7	80.6	80.8	123,251	83.5	83.3	83.6
2009	428,449	81.3	81.2	81.4	116,717	83.6	83.4	83.8
2010	416,759	81.7	81.6	81.8	110,516	83.0	82.8	83.2
2011	410,213	81.7	81.6	81.8	106,307	81.6	81.4	81.8
2012	412,679	81.9	81.8	82.0	106,996	81.2	81.0	81.5

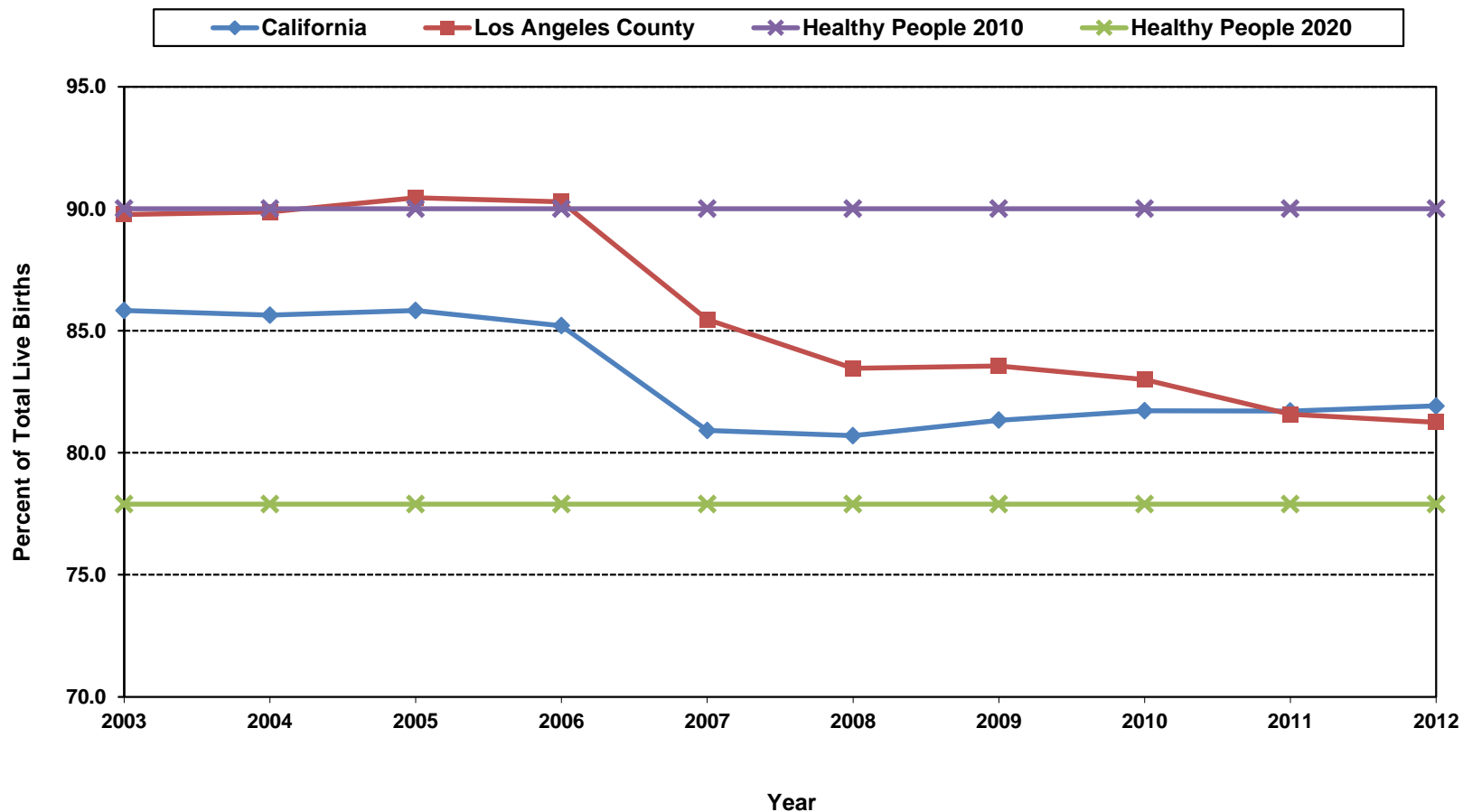
Year	Denominator: Live Births	
	California	LA County
2003	540,827	152,192
2004	544,685	151,504
2005	548,700	150,377
2006	562,157	151,837
2007	567,527	151,813
2008	551,567	147,684
2009	526,774	139,679
2010	509,979	133,160
2011	502,023	130,313
2012	503,788	131,697

Note: The decrease in first-trimester entry in 2007 is due at least in part to a recategorization of this data in birth certificates.

This measure excludes the prenatal care experiences of all women whose pregnancies did not result in live births.

Source: California Department of Public Health, Center for Health Statistics, OHIR Vital Statistics Section, 2003-2012.

### Percent of First Trimester Onset of Prenatal Care California vs. Los Angeles County, 2003-2012



Year 2010 Objective: Increase the proportion of pregnant women who receive prenatal care in the first trimester of pregnancy to 90 percent of live births.

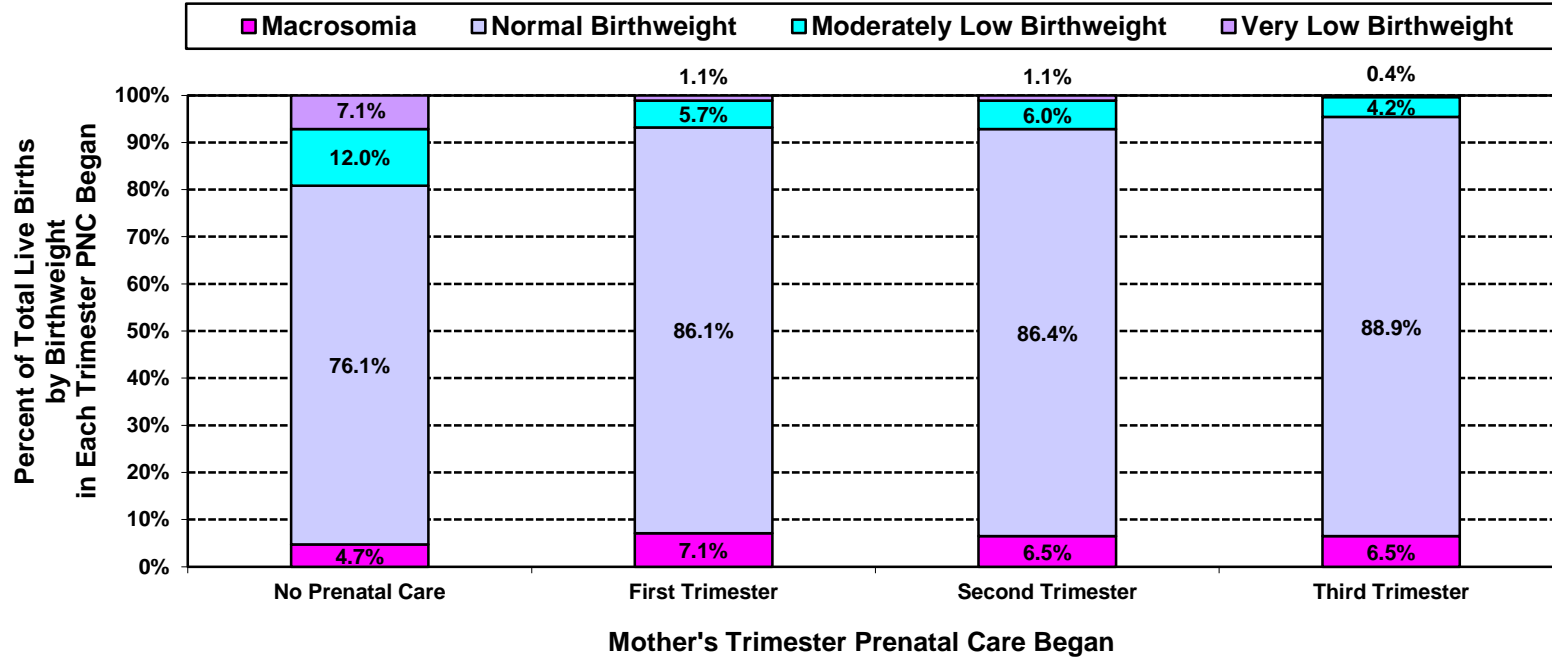
Year 2020 Objective: Increase the proportion of pregnant women who receive prenatal care in the first trimester of pregnancy to 77.9 percent of live births.

Note: The decrease in first-trimester entry in 2007 is due at least in part to a recategorization of this data in birth certificates.

This measure excludes the prenatal care experiences of all women whose pregnancies did not result in live births.

Source: California Department of Public Health, Center for Health Statistics, OHIR Vital Statistics Section, 2003-2012.

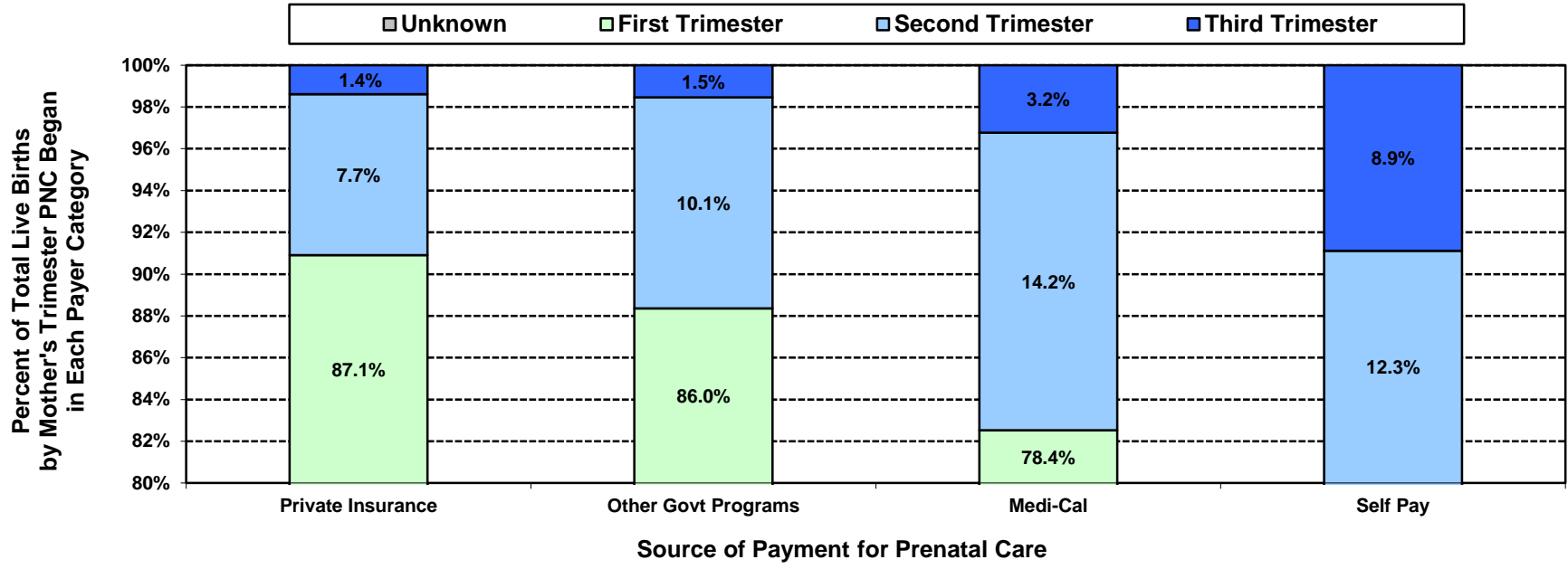
**Percent of Total Live Births  
by Birthweight and by Mother's Trimester Prenatal Care (PNC) Began  
Los Angeles County, 2012**



Los Angeles County, 2012									
Mother's Trimester Prenatal Care Began	Very Low Birthweight		Moderately Low Birthweight		Normal Birthweight		Macrosumia		Total Live Births
	0 to 1,499 grams		1,500 to 2,499 grams		2,500 to 3,999 grams		4,000+ grams		
	Number	Percent	Number	Percent	Number	Percent	Number	Percent	
No Prenatal Care	35	7.1	59	12.0	373	76.1	23	4.7	490
First	1,204	1.1	6,079	5.7	92,140	86.1	7,572	7.1	106,996
Second	169	1.1	901	6.0	12,871	86.4	963	6.5	14,905
Third	13	0.4	149	4.2	3,124	88.9	227	6.5	3,513
Unknown	111	1.9	431	7.4	4,869	84.0	380	6.6	5,793
<b>Total</b>	<b>1,532</b>	<b>1.2</b>	<b>7,619</b>	<b>5.8</b>	<b>113,377</b>	<b>86.1</b>	<b>9,165</b>	<b>7.0</b>	<b>131,697</b>

Note: "Trimester Prenatal Care Began" excludes the prenatal care experiences of all women whose pregnancies did not result in a live birth.  
Source: California Department of Public Health, Center for Health Statistics, OHIR Vital Statistics Section, 2012

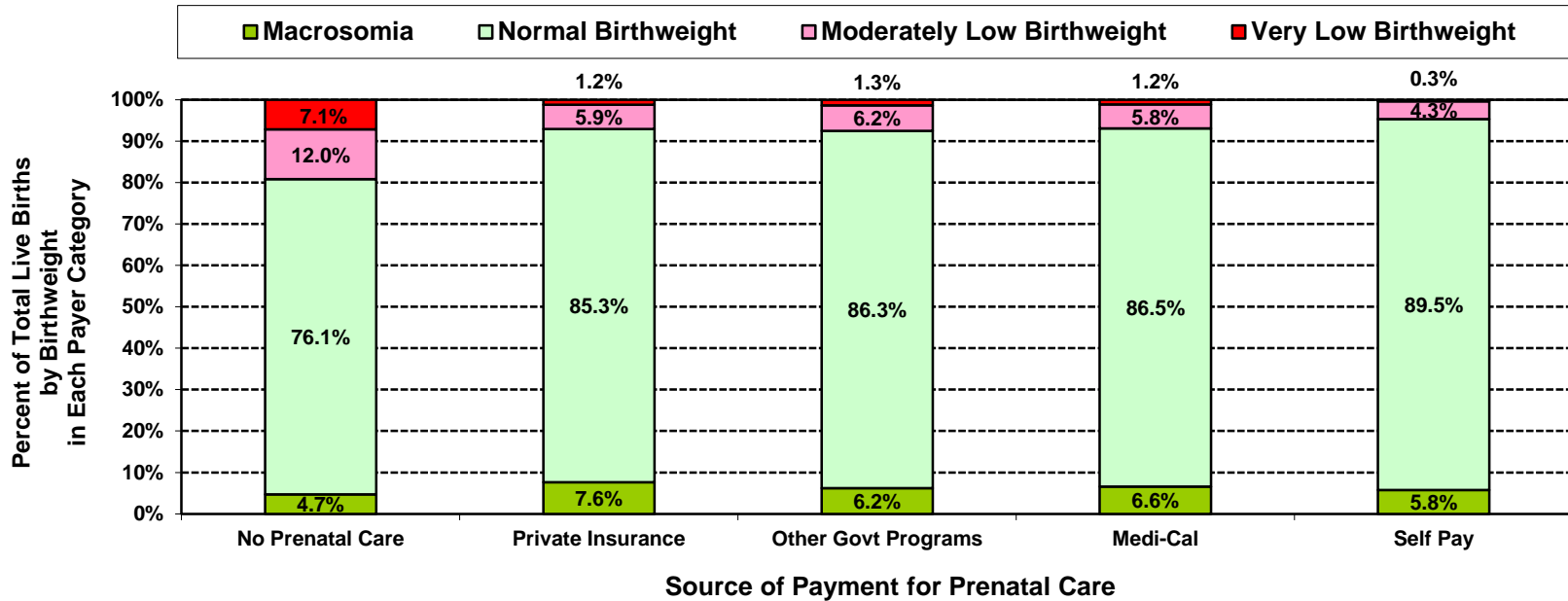
**Percent of Total Live Births by Mother's Trimester Prenatal Care (PNC) Began  
and by Source of Payment for Prenatal Care (PNC)  
Los Angeles County, 2012**



Los Angeles County, 2012											
Source of Payment for Prenatal Care	No Prenatal Care		Mother's Trimester Prenatal Care Began						Unknown		Total Live Births
			First		Second		Third				
	Number	Percent	Number	Percent	Number	Percent	Number	Percent	Number	Percent	
No Prenatal Care	490	100.0	<5	N/C	<5	N/C	<5	N/C	<5	N/C	490
Private Insurance	<5	N/C	46,611	87.1	4,123	7.7	743	1.4	2,033	3.8	53,510
Other Govt Programs	<5	N/C	1,950	86.0	229	10.1	35	1.5	54	2.4	2,268
Medi-Cal	<5	N/C	52,905	78.4	9,618	14.2	2,181	3.2	2,795	4.1	67,499
Self Pay	<5	N/C	3,746	65.4	703	12.3	509	8.9	773	13.5	5,731
Other/Unknown	<5	N/C	1,784	81.1	232	10.6	45	2.0	138	6.3	2,199
<b>Total</b>	<b>490</b>	<b>0.4</b>	<b>106,996</b>	<b>81.2</b>	<b>14,905</b>	<b>11.3</b>	<b>3,513</b>	<b>2.7</b>	<b>5,793</b>	<b>4.4</b>	<b>131,697</b>

Note: "Trimester Prenatal Care Began" excludes the prenatal care experiences of all women whose pregnancies did not result in a live birth.  
 Numbers fewer than 5 are shown as "<5". Rates are not calculated (N/C) if number is fewer than five.  
 Source: California Department of Public Health, Center for Health Statistics, OHIR Vital Statistics Section, 2012

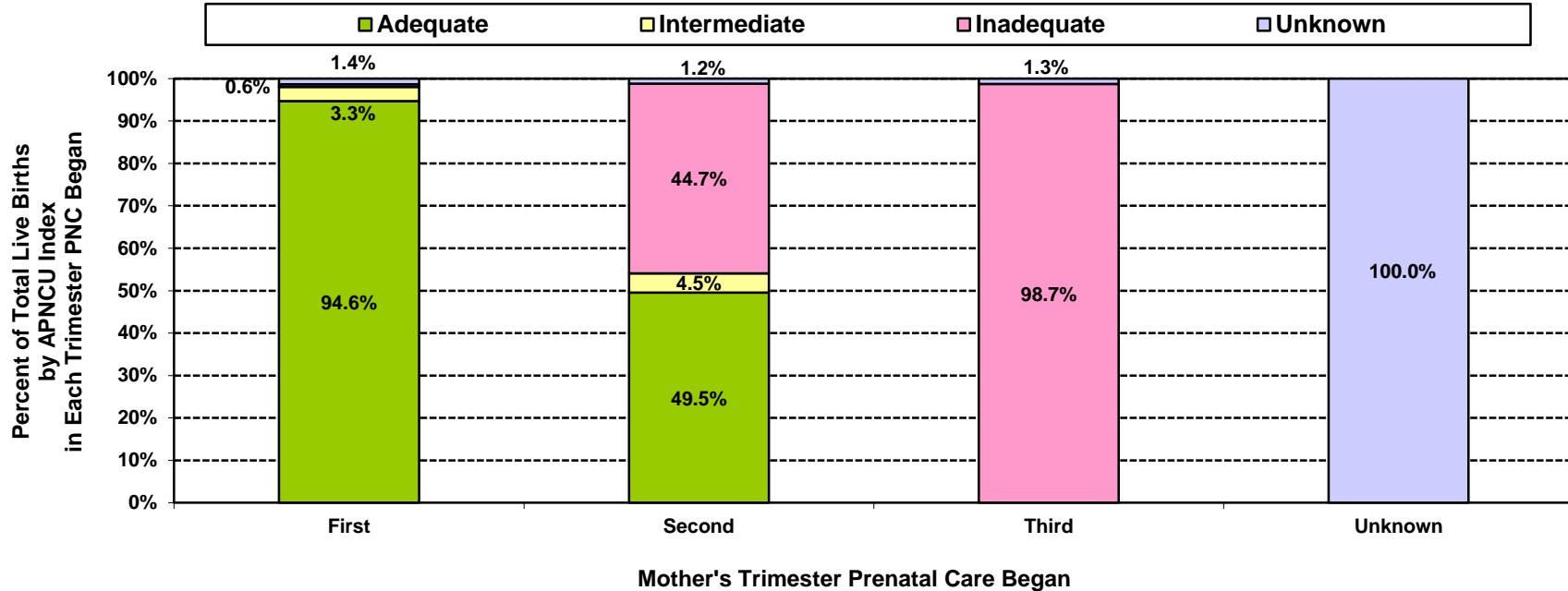
**Percent of Total Live Births  
by Birthweight and by Source of Payment for Prenatal Care (PNC)  
Los Angeles County, 2012**



Los Angeles County, 2012									
Source of Payment for Prenatal Care	Very Low Birthweight		Moderately Low Birthweight		Normal Birthweight		Macrosomia		Total Live Births
	0 to 1,499 grams		1,500 to 2,499 grams		2,500 to 3,999 grams		4,000+ grams		
	Number	Percent	Number	Percent	Number	Percent	Number	Percent	
No Prenatal Care	35	7.1	59	12.0	373	76.1	23	4.7	490
Private Insurance	634	1.2	3,138	5.9	45,669	85.3	4,069	7.6	53,510
Other Govt Programs	30	1.3	141	6.2	1,957	86.3	140	6.2	2,268
Medi-Cal	782	1.2	3,897	5.8	58,391	86.5	4,427	6.6	67,499
Self Pay	20	0.3	248	4.3	5,131	89.5	332	5.8	5,731
Other/Unknown	31	1.4	136	6.2	1,856	84.4	174	7.9	2,199
<b>Total</b>	<b>1,532</b>	<b>1.2</b>	<b>7,619</b>	<b>5.8</b>	<b>113,377</b>	<b>86.1</b>	<b>9,165</b>	<b>7.0</b>	<b>131,697</b>

Note: "Trimester Prenatal Care Began" excludes the prenatal care experiences of all women whose pregnancies did not result in a live birth.  
Source: California Department of Public Health, Center for Health Statistics, OHIR Vital Statistics Section, 2012

**Percent of Total Live Births by Adequacy of Prenatal Care Utilization Index  
and by Mother's Trimester Prenatal Care (PNC) Began  
Los Angeles County, 2012**

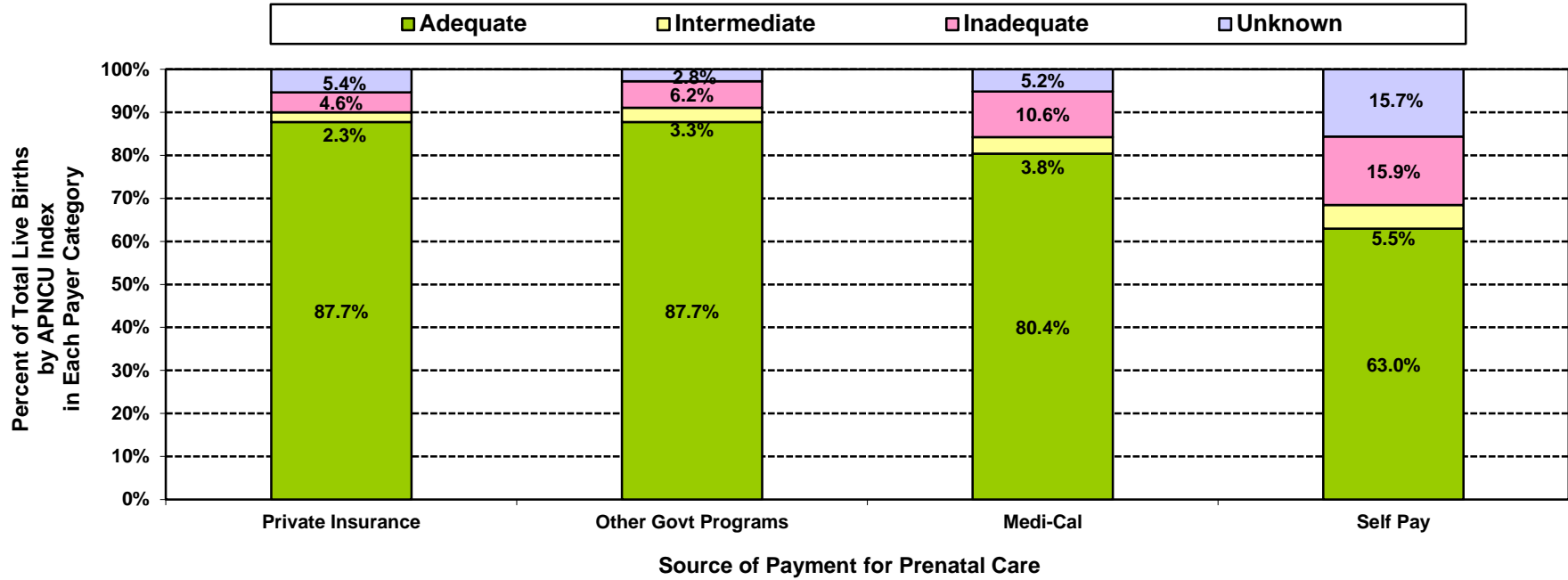


Los Angeles County, 2012									
Mother's Trimester Prenatal Care Began	Adequacy of Prenatal Care Utilization Index						Unknown		Total Live Births
	Adequate		Intermediate		Inadequate		Number	Percent	
	Number	Percent	Number	Percent	Number	Percent			
No Prenatal Care	<5	N/C	<5	N/C	490	100.0	<5	N/C	490
First	101,266	94.6	3,582	3.3	671	0.6	1,477	1.4	106,996
Second	7,385	49.5	678	4.5	6,659	44.7	183	1.2	14,905
Third	<5	N/C	<5	N/C	3,469	98.7	44	1.3	3,513
Unknown	<5	N/C	<5	N/C	<5	N/C	5,793	100.0	5,793
<b>Total</b>	<b>108,651</b>	<b>82.5</b>	<b>4,260</b>	<b>3.2</b>	<b>11,289</b>	<b>8.6</b>	<b>7,497</b>	<b>5.7</b>	<b>131,697</b>

Note: "Trimester Prenatal Care Began" excludes the prenatal care experiences of all women whose pregnancies did not result in a live birth. Numbers fewer than 5 are shown as "<5". Rates are not calculated (N/C) if number is fewer than five.

Source: California Department of Public Health, Center for Health Statistics, OHIR Vital Statistics Section, 2012

**Percent of Total Live Births by Adequacy of Prenatal Care Utilization Index  
and by Source of Payment for Prenatal Care (PNC)  
Los Angeles County, 2012**



Los Angeles County, 2012									
Source of Payment for Prenatal Care	Adequacy of Prenatal Care Utilization Index						Unknown		Total Live Births
	Adequate		Intermediate		Inadequate		Number	Percent	
	Number	Percent	Number	Percent	Number	Percent			
No Prenatal Care	<5	N/C	<5	N/C	490	100.0	<5	N/C	490
Private Insurance	46,955	87.7	1,221	2.3	2,452	4.6	2,882	5.4	53,510
Other Govt Programs	1,990	87.7	75	3.3	140	6.2	63	2.8	2,268
Medi-Cal	54,258	80.4	2,594	3.8	7,155	10.6	3,492	5.2	67,499
Self Pay	3,609	63.0	316	5.5	909	15.9	897	15.7	5,731
Other/Unknown	1,839	83.6	54	2.5	143	6.5	163	7.4	2,199
<b>Total</b>	<b>108,651</b>	<b>82.5</b>	<b>4,260</b>	<b>3.2</b>	<b>11,289</b>	<b>8.6</b>	<b>7,497</b>	<b>5.7</b>	<b>131,697</b>

Note: Numbers fewer than 5 are shown as "<5". Rates are not calculated (N/C) if number is fewer than five.  
Source: California Department of Public Health, Center for Health Statistics, OHIR Vital Statistics Section, 2012



**TITLE V INDICATOR TEMPLATE**

**INDICATOR:** Percent of Total Live Births by Adequacy of Prenatal Care Utilization (APNCU) Index

**DEFINITION:** The percent of live born infants whose mothers received adequate prenatal care as defined by the Adequacy of Prenatal Care Utilization Index (APNCU) developed by Milton Kotelchuck. This index does not assess the quality of the prenatal care that is delivered.

**NUMERATOR:** The number of live births to women who received adequate care, as defined by the APNCU criteria, by place of residence, in a calendar year

**DENOMINATOR:** The total number of live births, by place of residence, in a calendar year

**HEALTHY PEOPLE 2010 OBJECTIVE:**  
 Increase the proportion of all pregnant women who receive early and adequate prenatal care to 90 percent of live births.  
 (Baseline: 74 percent of live births in 1998) (Objective 16-6b)

**HEALTHY PEOPLE 2020 OBJECTIVE:**  
 Increase the proportion of pregnant women who receive early and adequate prenatal care to 77.6 percent of live births.  
 (Baseline: 70.5 percent of pregnant women in 2007) (Objective MICH-10.2)

**RISK FACTORS:** **Inadequate Prenatal Care**  
 Low income; young maternal age/teen pregnancy; low maternal education level; race/ethnicity (African American, Hispanic, American Indian/Alaskan Native); high parity; maternal substance abuse; lack of health insurance; lack of obstetric providers

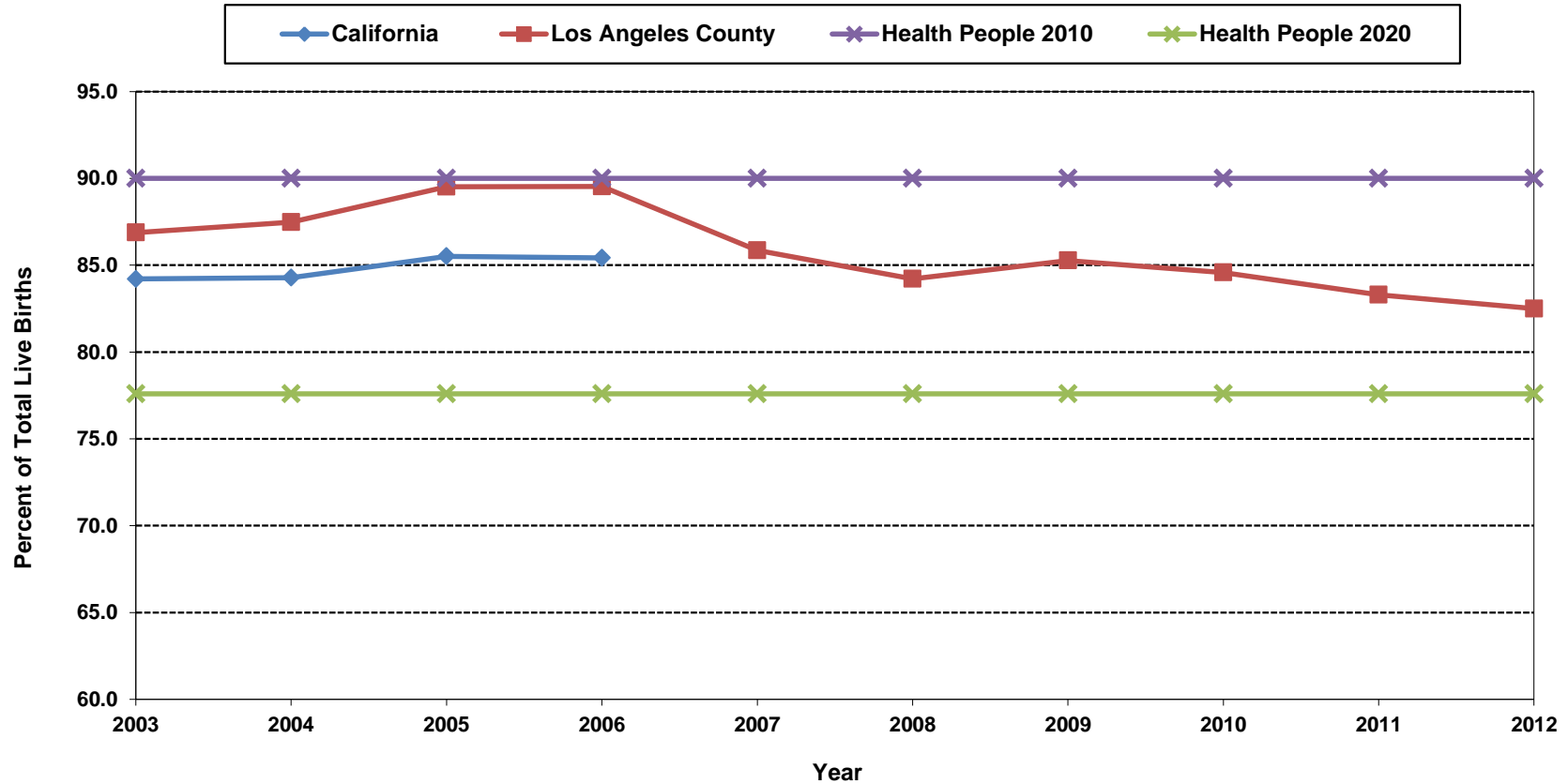
Year	California				Los Angeles County			
	Adequate Prenatal Care		95% Confidence Interval		Adequate Prenatal Care		95% Confidence Interval	
	Number	Percent	Lower	Upper	Number	Percent	Lower	Upper
2003	455,424	84.2	84.1	84.3	132,229	86.9	86.7	87.1
2004	459,050	84.3	84.2	84.4	132,531	87.5	87.3	87.6
2005	469,208	85.5	85.4	85.6	134,611	89.5	89.4	89.7
2006	480,255	85.4	85.3	85.5	135,961	89.5	89.4	89.7
2007	N/A	N/A	N/A	N/A	130,333	85.9	85.7	86.0
2008	N/A	N/A	N/A	N/A	124,381	84.2	84.0	84.4
2009	N/A	N/A	N/A	N/A	119,111	85.3	85.1	85.5
2010	N/A	N/A	N/A	N/A	112,631	84.6	84.4	84.8
2011	N/A	N/A	N/A	N/A	108,553	83.3	83.1	83.5
2012	N/A	N/A	N/A	N/A	108,651	82.5	82.3	82.7

Denominator: Live Births		
Year	California	LA County
2003	540,827	152,192
2004	544,685	151,504
2005	548,700	150,377
2006	562,157	151,837
2007	567,527	151,813
2008	551,567	147,684
2009	526,774	139,679
2010	509,979	133,160
2011	502,023	130,313
2012	503,788	131,697

Note: The APNCU Index measures prenatal care utilization, which includes consideration of the month prenatal care began and the number of prenatal care visits during the time mothers actually received prenatal care. This utilization index is based on the recommendations established by the American College of Obstetrics and Gynecologists (ACOG). Appendix A contains the specific criteria for timing and number of prenatal care visits that are used to assign adequacy categories. Due to the change in methodology for calculating the Kotelchuck Index, data presented may not be comparable to those published in previous FHOP reports.  
 N/A: 2007 - 2012 data for California not available for retrieval

Source: California Department of Public Health, Center for Health Statistics, OHIR Vital Statistics Section, 2003-2012.

**Percent of Total Live Births with "Adequate" Prenatal Care  
as Rated by Kotelchuck (APNCU) Index  
California vs. Los Angeles County, 2003-2012**



Year 2010 Objective: Increase the proportion of pregnant women who receive early and adequate prenatal care to 90 percent of live births.

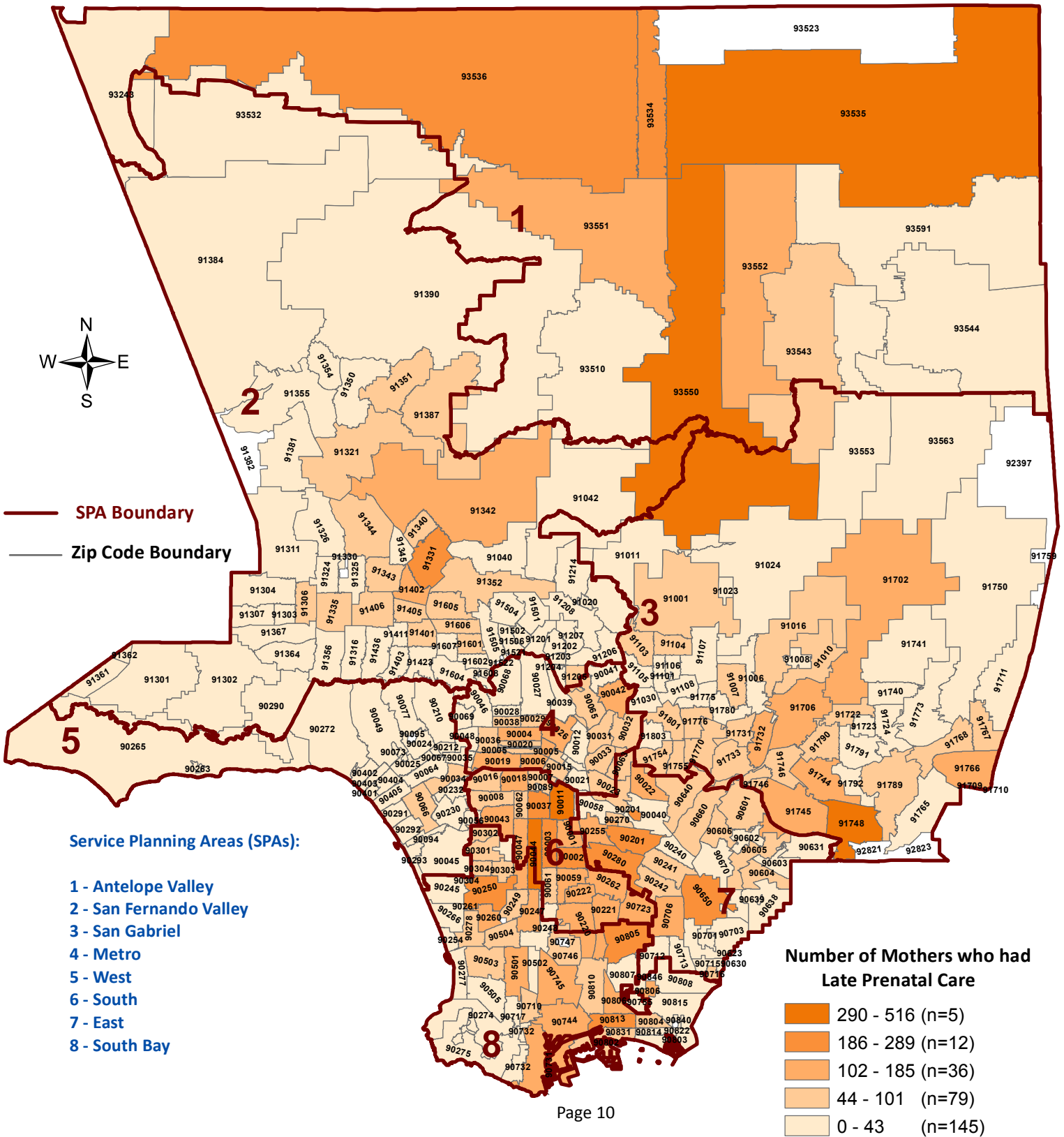
Year 2020 Objective: Increase the proportion of pregnant women who receive early and adequate prenatal care to 77.6 percent of live births.

Note: The APNCU Index measures prenatal care utilization, which includes consideration of the month prenatal care began and the number of prenatal care visits during the time mothers actually received prenatal care. This utilization index is based on the recommendations established by the American College of Obstetrics and Gynecologists (ACOG). Appendix A contains the specific criteria for timing and number of prenatal care visits that are used to assign adequacy categories.

Due to the change in methodology for calculating the Kotelchuck Index, data presented may not be comparable to those published in previous FHOP reports.

Source: California Department of Public Health, Center for Health Statistics, OHIR Vital Statistics Section, 2003-2012.

**Los Angeles County - Department of Public Health**  
**Number of Live Births by Mothers who had Late Prenatal Care by Zip Code\* and Service Planning Area (SPA)**  
**Los Angeles County, 2012**



\*Los Angeles County zip code boundaries as of April 2007

Total number of live births in Los Angeles County, 2012= 131,697

Total number of mothers who had late prenatal care in Los Angeles County, 2012 = 18,418

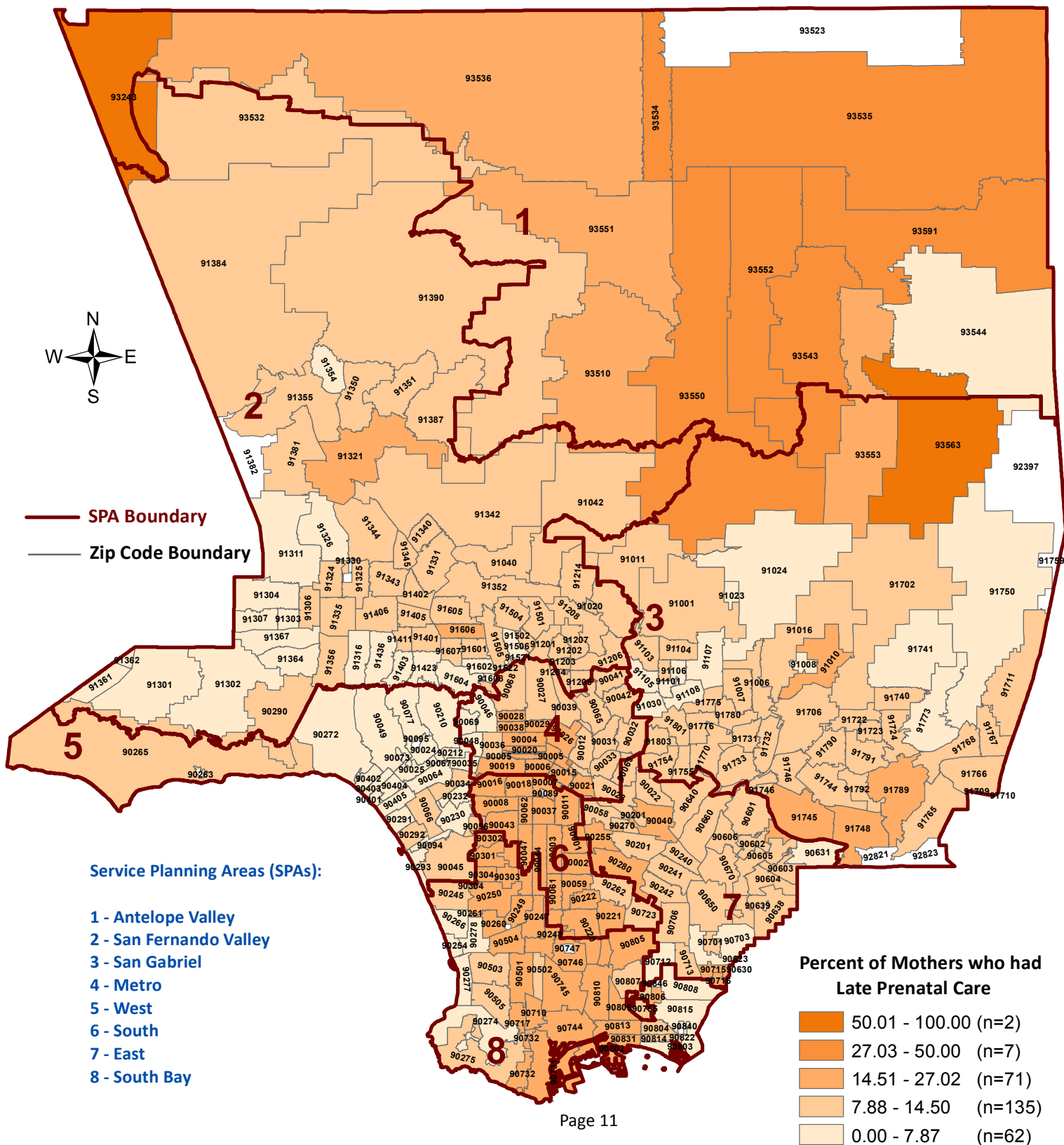
Note: Prenatal care that begins in the second or third trimester is considered late.

Zip code 90704 (Catalina Island) is not included. Total number of mothers who had late prenatal care in 90704, 2012 = 4

Source : California Department of Public Health, Center for Health Statistics, OHIR Vital Statistics Section, 2012.

n = total number of zip codes within range

**Los Angeles County - Department of Public Health**  
**Percent of Live Births by Mothers who had Late Prenatal Care by Zip Code\* and Service Planning Area (SPA)**  
**Los Angeles County, 2012**



\*Los Angeles County zip code boundaries as of April 2007

Total number of live births in Los Angeles County, 2012= 131,697

Total number of mothers who had late prenatal care in Los Angeles County, 2012 = 18,418

Percent of mothers who had late prenatal care in Los Angeles County, 2012 = 13.99

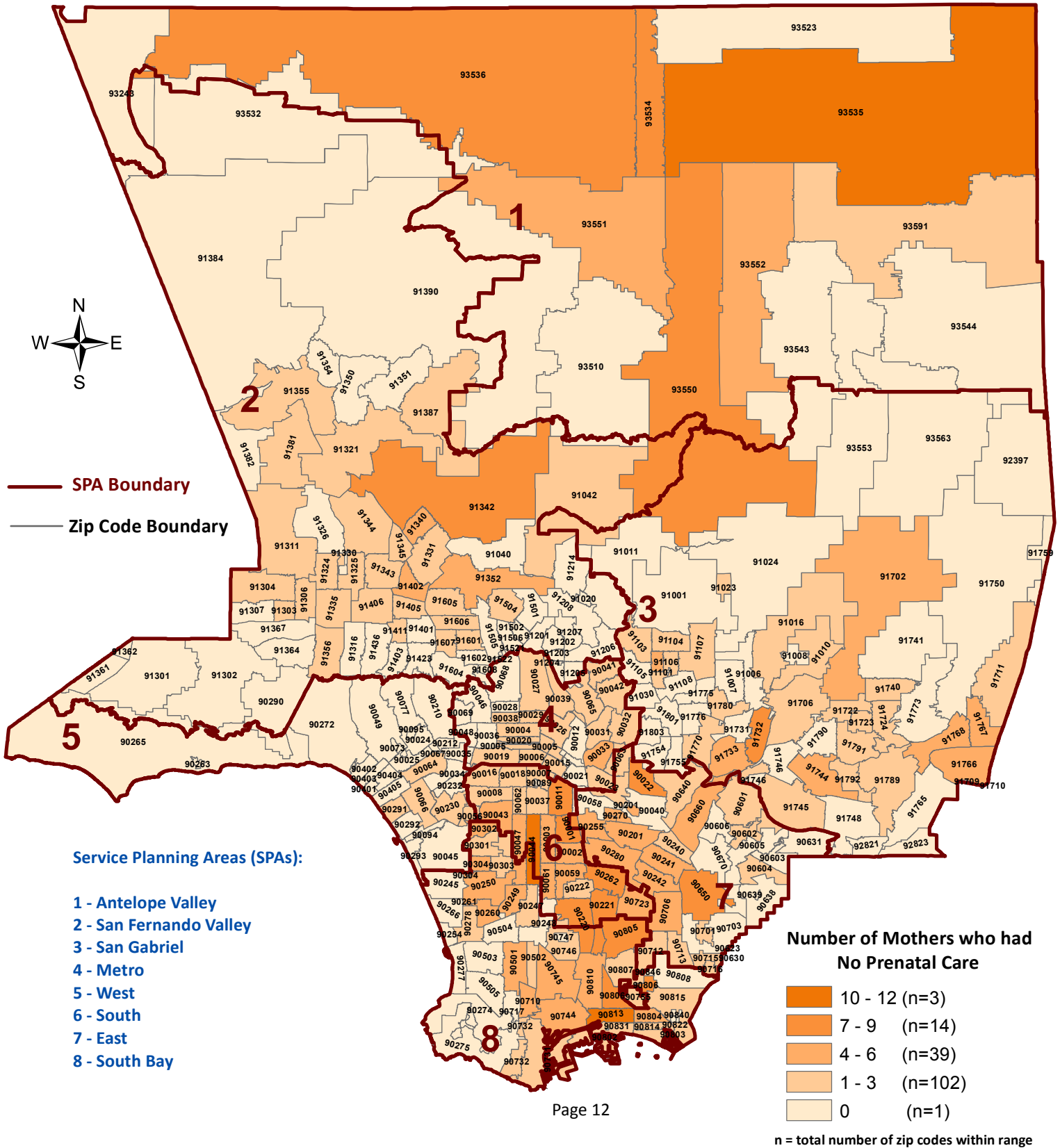
Note: Prenatal care that begins in the second or third trimester is considered late.

Zip code 90704 (Catalina Island) is not included. Percent of mothers who had late prenatal care in 90704, 2012 = 8.89

Source : California Department of Public Health, Center for Health Statistics, OHIR Vital Statistics Section, 2012.

n = total number of zip codes within range

**Los Angeles County - Department of Public Health**  
**Number of Live Births by Mothers who had No Prenatal Care by Zip Code\* and Service Planning Area (SPA)**  
**Los Angeles County, 2012**



\*Los Angeles County zip code boundaries as of April 2007

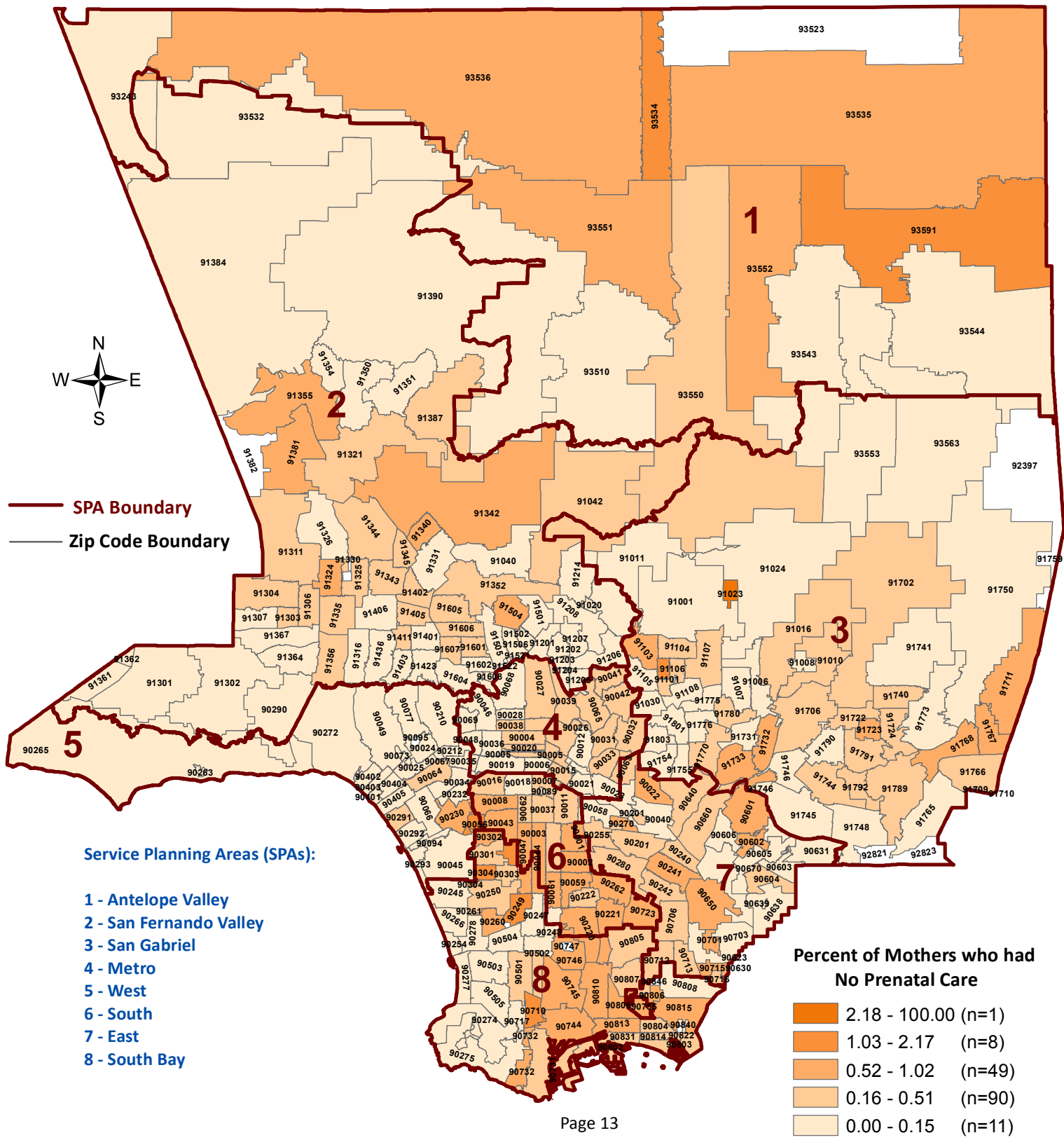
Total number of live births in Los Angeles County, 2012 = 131,697

Total number of mothers who had no prenatal care in Los Angeles County, 2012 = 490

Zip code 90704 (Catalina Island) is not included. Total number of mothers who had no prenatal care in 90704, 2012 = 0

Source: California Department of Public Health, Center for Health Statistics, OHIR Vital Statistics Section, 2012.

**Los Angeles County - Department of Public Health**  
**Percent of Live Births by Mothers who had No Prenatal Care by Zip Code\* and Service Planning Area (SPA)**  
**Los Angeles County, 2012**



\*Los Angeles County zip code boundaries as of April 2007  
 Total number of live births in Los Angeles County, 2012= 131,697  
 Total number of mothers who had no prenatal care in Los Angeles County, 2012 = 490  
 Percent of mothers who had no prenatal care in Los Angeles County, 2012 = 0.37  
 Zip code 90704 (Catalina Island) is not included. Percent of mothers who had no prenatal care in 90704, 2012 = 0.00  
 Source : California Department of Public Health, Center for Health Statistics, OHIR Vital Statistics Section, 2012.



Los Angeles County - Department of Public Health  
**Entry Into Prenatal Care (PNC) By Zip Code\***

Los Angeles County, 2012

Mother's Residential Zip Code	Mother's Trimester Prenatal Care Began										Total Live Births
	No Prenatal Care		First Trimester		Second Trimester		Third Trimester		Unknown		
	Number	Percent	Number	Percent	Number	Percent	Number	Percent	Number	Percent	
Missing	32	5.6	342	60.0	81	14.2	55	9.7	60	10.5	570
90001	9	0.8	892	77.8	148	12.9	33	2.9	64	5.6	1,146
90002	6	0.6	819	77.3	155	14.6	43	4.1	36	3.4	1,059
90003	6	0.4	1,090	76.9	220	15.5	49	3.5	53	3.7	1,418
90004	<5	**	600	74.6	107	13.3	56	7.0	39	4.9	804
90005	<5	**	419	81.2	64	12.4	15	2.9	17	3.3	516
90006	<5	**	699	77.0	129	14.2	35	3.9	44	4.9	908
90007	<5	**	331	77.2	52	12.1	24	5.6	20	4.7	429
90008	<5	**	259	71.4	58	16.0	10	2.8	34	9.4	363
90009	<5	**	<5	**	<5	**	<5	**	<5	**	2
90010	<5	**	24	82.8	<5	**	<5	**	<5	**	29
90011	8	0.4	1,622	74.1	351	16.0	90	4.1	117	5.4	2,188
90012	<5	**	187	82.7	15	6.6	8	3.5	16	7.1	226
90013	<5	**	69	86.3	8	10.0	<5	**	<5	**	80
90014	<5	**	29	76.3	7	18.4	<5	**	<5	**	38
90015	<5	**	200	75.8	34	12.9	12	4.6	17	6.4	264
90016	<5	**	515	78.4	73	11.1	28	4.3	39	5.9	657
90017	<5	**	298	83.0	45	12.5	10	2.8	5	1.4	359
90018	<5	**	521	73.8	112	15.9	27	3.8	45	6.4	706
90019	<5	**	631	75.1	79	9.4	55	6.6	74	8.8	840
90020	<5	**	427	81.3	64	12.2	17	3.2	16	3.1	525
90021	<5	**	19	76.0	<5	**	<5	**	<5	**	25
90022	7	0.6	846	76.8	88	8.0	18	1.6	143	13.0	1,102
90023	<5	**	565	69.8	73	9.0	16	2.0	155	19.1	810
90024	<5	**	219	83.9	8	3.1	<5	**	32	12.3	261
90025	<5	**	486	86.6	34	6.1	<5	**	37	6.6	561
90026	<5	**	610	79.7	100	13.1	25	3.3	28	3.7	765
90027	<5	**	364	88.4	27	6.6	8	1.9	12	2.9	412
90028	<5	**	120	70.6	21	12.4	11	6.5	18	10.6	170
90029	<5	**	336	75.9	71	16.0	24	5.4	11	2.5	443
90030	<5	**	<5	**	<5	**	<5	**	<5	**	3
90031	<5	**	412	77.7	59	11.1	11	2.1	46	8.7	530
90032	<5	**	441	77.5	59	10.4	17	3.0	51	9.0	569
90033	<5	**	573	69.5	70	8.5	11	1.3	166	20.2	824
90034	<5	**	600	83.7	50	7.0	15	2.1	52	7.3	717
90035	<5	**	320	68.7	23	4.9	<5	**	121	26.0	466
90036	<5	**	376	72.2	38	7.3	17	3.3	90	17.3	521
90037	<5	**	849	74.3	200	17.5	54	4.7	38	3.3	1,143
90038	<5	**	245	76.3	47	14.6	12	3.7	16	5.0	321
90039	<5	**	289	86.3	26	7.8	<5	**	16	4.8	335
90040	<5	**	128	74.9	21	12.3	5	2.9	17	9.9	171
90041	<5	**	203	88.3	20	8.7	<5	**	<5	**	230
90042	<5	**	714	83.4	96	11.2	21	2.5	23	2.7	856
90043	<5	**	409	71.3	100	17.4	26	4.5	36	6.3	574
90044	12	0.8	1,160	73.5	275	17.4	65	4.1	67	4.2	1,579
90045	<5	**	360	86.5	30	7.2	<5	**	22	5.3	416
90046	<5	**	283	75.3	18	4.8	10	2.7	65	17.3	376
90047	5	0.8	493	75.4	97	14.8	29	4.4	30	4.6	654
90048	<5	**	192	78.1	9	3.7	<5	**	45	18.3	246
90049	<5	**	310	87.8	10	2.8	<5	**	32	9.1	353
90050	<5	**	<5	**	<5	**	<5	**	<5	**	2
90051	<5	**	<5	**	<5	**	<5	**	<5	**	1
90052	<5	**	<5	**	<5	**	<5	**	<5	**	1
90053	<5	**	<5	**	<5	**	<5	**	<5	**	1
90054	<5	**	<5	**	<5	**	<5	**	<5	**	3
90056	<5	**	46	83.6	5	9.1	<5	**	<5	**	55
90057	<5	**	612	81.6	96	12.8	26	3.5	14	1.9	750
90058	<5	**	54	78.3	10	14.5	<5	**	5	7.3	69
90059	6	0.7	671	79.1	117	13.8	30	3.5	24	2.8	848
90060	<5	**	<5	**	<5	**	<5	**	<5	**	2
90061	<5	**	366	76.6	87	18.2	10	2.1	12	2.5	478
90062	<5	**	329	74.4	64	14.5	29	6.6	19	4.3	442
90063	<5	**	653	72.2	73	8.1	21	2.3	155	17.2	904

Los Angeles County - Department of Public Health  
**Entry Into Prenatal Care (PNC) By Zip Code\***  
**Los Angeles County, 2012**

Mother's Residential Zip Code	Mother's Trimester Prenatal Care Began										Total Live Births
	No Prenatal Care		First Trimester		Second Trimester		Third Trimester		Unknown		
	Number	Percent	Number	Percent	Number	Percent	Number	Percent	Number	Percent	
90064	<5	**	258	85.2	12	4.0	<5	**	28	9.2	303
90065	<5	**	492	84.5	59	10.1	13	2.2	17	2.9	582
90066	<5	**	570	84.0	45	6.6	15	2.2	48	7.1	679
90067	<5	**	19	95.0	<5	**	<5	**	<5	**	20
90068	<5	**	143	74.1	18	9.3	<5	**	29	15.0	193
90069	<5	**	106	79.1	<5	**	<5	**	21	15.7	134
90071	<5	**	<5	**	<5	**	<5	**	<5	**	2
90073	<5	**	<5	**	<5	**	<5	**	<5	**	1
90077	<5	**	69	86.3	<5	**	<5	**	7	8.8	80
90079	<5	**	<5	**	<5	**	<5	**	<5	**	1
90080	<5	**	<5	**	<5	**	<5	**	<5	**	1
90081	<5	**	<5	**	<5	**	<5	**	<5	**	1
90083	<5	**	<5	**	<5	**	<5	**	<5	**	1
90089	<5	**	<5	**	<5	**	<5	**	<5	**	2
90093	<5	**	<5	**	<5	**	<5	**	<5	**	1
90094	<5	**	143	89.4	6	3.8	<5	**	10	6.3	160
90201	5	0.3	1,324	80.4	201	12.2	31	1.9	85	5.2	1,646
90202	<5	**	6	100.0	<5	**	<5	**	<5	**	6
90210	<5	**	128	67.0	<5	**	6	3.1	54	28.3	191
90211	<5	**	77	80.2	<5	**	<5	**	19	19.8	96
90212	<5	**	79	73.8	<5	**	<5	**	24	22.4	107
90220	7	0.8	705	81.2	113	13.0	21	2.4	22	2.5	868
90221	8	0.7	892	81.2	145	13.2	26	2.4	27	2.5	1,098
90222	<5	**	463	78.6	86	14.6	21	3.6	17	2.9	589
90224	<5	**	<5	**	<5	**	<5	**	<5	**	1
90230	<5	**	292	86.7	15	4.5	7	2.1	21	6.2	337
90232	<5	**	167	88.8	11	5.9	<5	**	8	4.3	188
90240	<5	**	237	82.9	34	11.9	<5	**	11	3.9	286
90241	<5	**	527	83.8	66	10.5	12	1.9	20	3.2	629
90242	<5	**	510	84.6	68	11.3	6	1.0	16	2.7	603
90245	<5	**	156	88.6	9	5.1	5	2.8	6	3.4	176
90247	<5	**	507	78.1	103	15.9	26	4.0	12	1.9	649
90248	<5	**	96	83.5	11	9.6	6	5.2	<5	**	115
90249	<5	**	244	78.2	48	15.4	8	2.6	8	2.6	312
90250	6	0.4	1,167	78.6	210	14.2	79	5.3	22	1.5	1,484
90251	<5	**	<5	**	<5	**	<5	**	<5	**	4
90254	<5	**	189	90.4	9	4.3	<5	**	8	3.8	209
90255	<5	**	967	78.7	145	11.8	40	3.3	73	5.9	1,229
90260	<5	**	337	72.6	89	19.2	23	5.0	11	2.4	464
90262	9	0.7	1,039	83.6	129	10.4	39	3.1	27	2.2	1,243
90263	<5	**	<5	**	<5	**	<5	**	<5	**	3
90265	<5	**	79	85.0	6	6.5	<5	**	6	6.5	93
90266	<5	**	286	88.0	14	4.3	<5	**	24	7.4	325
90270	<5	**	367	82.8	42	9.5	9	2.0	22	5.0	443
90272	<5	**	143	92.9	<5	**	<5	**	7	4.6	154
90274	<5	**	95	93.1	5	4.9	<5	**	<5	**	102
90275	<5	**	194	88.6	16	7.3	5	2.3	<5	**	219
90277	<5	**	330	89.9	22	6.0	<5	**	11	3.0	367
90278	<5	**	598	90.7	42	6.4	5	0.8	13	2.0	659
90280	<5	**	1,153	81.6	175	12.4	35	2.5	47	3.3	1,413
90290	<5	**	36	85.7	5	11.9	<5	**	<5	**	42
90291	<5	**	277	86.3	19	5.9	6	1.9	18	5.6	321
90292	<5	**	229	83.6	20	7.3	7	2.6	18	6.6	274
90293	<5	**	119	89.5	6	4.5	<5	**	6	4.5	133
90295	<5	**	<5	**	<5	**	<5	**	<5	**	1
90301	<5	**	415	81.1	68	13.3	19	3.7	9	1.8	512
90302	<5	**	316	75.6	67	16.0	19	4.6	13	3.1	418
90303	<5	**	291	72.0	72	17.8	23	5.7	16	4.0	404
90304	5	1.1	351	76.0	82	17.8	15	3.3	9	2.0	462
90305	<5	**	97	73.5	19	14.4	<5	**	12	9.1	132
90306	<5	**	<5	**	<5	**	<5	**	<5	**	1
90401	<5	**	50	92.6	<5	**	<5	**	<5	**	54



Los Angeles County - Department of Public Health  
**Entry Into Prenatal Care (PNC) By Zip Code\***

Los Angeles County, 2012

Mother's Residential Zip Code	Mother's Trimester Prenatal Care Began										Total Live Births
	No Prenatal Care		First Trimester		Second Trimester		Third Trimester		Unknown		
	Number	Percent	Number	Percent	Number	Percent	Number	Percent	Number	Percent	
90402	<5	**	96	91.4	<5	**	<5	**	5	4.8	105
90403	<5	**	242	90.3	12	4.5	<5	**	12	4.5	268
90404	<5	**	208	89.7	11	4.7	<5	**	12	5.2	232
90405	<5	**	243	89.7	15	5.5	<5	**	11	4.1	271
90406	<5	**	<5	**	<5	**	<5	**	<5	**	1
90501	<5	**	465	77.5	103	17.2	18	3.0	11	1.8	600
90502	<5	**	178	85.2	23	11.0	5	2.4	<5	**	209
90503	<5	**	361	85.3	52	12.3	5	1.2	5	1.2	423
90504	<5	**	253	83.0	37	12.1	11	3.6	<5	**	305
90505	<5	**	235	86.4	29	10.7	6	2.2	<5	**	272
90508	<5	**	<5	**	<5	**	<5	**	<5	**	1
90601	<5	**	310	82.5	43	11.4	6	1.6	15	4.0	376
90602	<5	**	279	83.8	26	7.8	9	2.7	17	5.1	333
90603	<5	**	180	85.7	24	11.4	<5	**	<5	**	210
90604	<5	**	459	85.0	53	9.8	9	1.7	17	3.2	540
90605	<5	**	434	84.0	53	10.3	15	2.9	15	2.9	517
90606	<5	**	352	83.4	46	10.9	14	3.3	10	2.4	422
90607	<5	**	<5	**	<5	**	<5	**	<5	**	2
90608	<5	**	<5	**	<5	**	<5	**	<5	**	2
90609	<5	**	<5	**	<5	**	<5	**	<5	**	1
90610	<5	**	<5	**	<5	**	<5	**	<5	**	2
90620	<5	**	<5	**	<5	**	<5	**	<5	**	1
90630	<5	**	15	93.8	<5	**	<5	**	<5	**	16
90631	<5	**	29	96.7	<5	**	<5	**	<5	**	30
90638	<5	**	431	90.6	30	6.3	10	2.1	5	1.1	476
90639	<5	**	<5	**	<5	**	<5	**	<5	**	2
90640	<5	**	652	83.0	69	8.8	10	1.3	53	6.7	786
90650	9	0.6	1,213	82.9	171	11.7	37	2.5	34	2.3	1,464
90651	<5	**	<5	**	<5	**	<5	**	<5	**	2
90660	<5	**	671	84.4	72	9.1	13	1.6	35	4.4	795
90661	<5	**	<5	**	<5	**	<5	**	<5	**	1
90665	<5	**	<5	**	<5	**	<5	**	<5	**	1
90666	<5	**	<5	**	<5	**	<5	**	<5	**	1
90670	<5	**	130	83.9	19	12.3	<5	**	<5	**	155
90701	<5	**	145	87.9	16	9.7	<5	**	<5	**	165
90703	<5	**	306	89.2	23	6.7	<5	**	10	2.9	343
90704	<5	**	33	73.3	<5	**	<5	**	8	17.8	45
90706	5	0.5	914	83.1	122	11.1	26	2.4	33	3.0	1,100
90707	<5	**	<5	**	<5	**	<5	**	<5	**	1
90710	<5	**	280	80.7	42	12.1	12	3.5	9	2.6	347
90712	<5	**	311	86.6	17	4.7	9	2.5	21	5.9	359
90713	<5	**	259	84.9	23	7.5	5	1.6	17	5.6	305
90714	<5	**	<5	**	<5	**	<5	**	<5	**	1
90715	<5	**	211	82.1	34	13.2	<5	**	6	2.3	257
90716	<5	**	159	74.3	40	18.7	11	5.1	<5	**	214
90717	<5	**	195	81.3	35	14.6	8	3.3	<5	**	240
90723	5	0.6	737	82.5	101	11.3	23	2.6	27	3.0	893
90731	<5	**	622	76.7	127	15.7	33	4.1	27	3.3	811
90732	<5	**	157	82.6	23	12.1	6	3.2	<5	**	190
90744	5	0.6	687	78.2	122	13.9	52	5.9	13	1.5	879
90745	5	0.7	522	77.6	95	14.1	40	5.9	11	1.6	673
90746	<5	**	204	75.6	43	15.9	8	3.0	13	4.8	270
90749	<5	**	<5	**	<5	**	<5	**	<5	**	1
90755	<5	**	144	85.2	12	7.1	<5	**	9	5.3	169
90801	<5	**	<5	**	<5	**	<5	**	<5	**	6
90802	<5	**	391	76.1	77	15.0	22	4.3	23	4.5	514
90803	<5	**	225	89.3	13	5.2	<5	**	12	4.8	252
90804	<5	**	485	81.1	69	11.5	14	2.3	27	4.5	598
90805	8	0.5	1,318	78.7	216	12.9	32	1.9	100	6.0	1,674
90806	8	1.0	595	75.5	117	14.9	26	3.3	42	5.3	788
90807	<5	**	298	85.6	30	8.6	<5	**	15	4.3	348

Los Angeles County - Department of Public Health  
**Entry Into Prenatal Care (PNC) By Zip Code\***

Los Angeles County, 2012

Mother's Residential Zip Code	Mother's Trimester Prenatal Care Began										Total Live Births
	No Prenatal Care		First Trimester		Second Trimester		Third Trimester		Unknown		
	Number	Percent	Number	Percent	Number	Percent	Number	Percent	Number	Percent	
90808	<5	**	345	88.0	26	6.6	<5	**	20	5.1	392
90810	<5	**	421	77.8	71	13.1	21	3.9	25	4.6	541
90812	<5	**	<5	**	<5	**	<5	**	<5	**	2
90813	10	0.9	884	77.1	170	14.8	34	3.0	49	4.3	1,147
90814	<5	**	176	86.3	19	9.3	<5	**	7	3.4	204
90815	<5	**	321	87.5	22	6.0	5	1.4	17	4.6	367
90840	<5	**	<5	**	<5	**	<5	**	<5	**	1
91001	<5	**	314	86.3	39	10.7	6	1.7	5	1.4	364
91003	<5	**	<5	**	<5	**	<5	**	<5	**	2
91006	<5	**	313	83.2	30	8.0	7	1.9	26	6.9	376
91007	<5	**	469	83.5	33	5.9	13	2.3	47	8.4	562
91008	<5	**	<5	**	<5	**	<5	**	<5	**	4
91010	<5	**	294	83.5	47	13.4	7	2.0	<5	**	352
91011	<5	**	80	88.9	8	8.9	<5	**	<5	**	90
91016	<5	**	442	86.2	49	9.6	16	3.1	5	1.0	513
91020	<5	**	76	88.4	7	8.1	<5	**	<5	**	86
91023	<5	**	<5	**	<5	**	<5	**	<5	**	1
91024	<5	**	92	96.8	<5	**	<5	**	<5	**	95
91030	<5	**	226	91.9	16	6.5	<5	**	<5	**	246
91031	<5	**	<5	**	<5	**	<5	**	<5	**	1
91040	<5	**	150	85.2	23	13.1	<5	**	<5	**	176
91042	<5	**	246	87.5	24	8.5	8	2.9	<5	**	281
91077	<5	**	<5	**	<5	**	<5	**	<5	**	2
91101	<5	**	286	88.5	29	9.0	<5	**	<5	**	323
91103	<5	**	319	83.7	49	12.9	<5	**	7	1.8	381
91104	<5	**	384	86.9	45	10.2	8	1.8	<5	**	442
91105	<5	**	124	92.5	7	5.2	<5	**	<5	**	134
91106	<5	**	334	93.3	19	5.3	<5	**	<5	**	358
91107	<5	**	388	91.5	27	6.4	<5	**	<5	**	424
91108	<5	**	74	93.7	<5	**	<5	**	<5	**	79
91201	<5	**	211	90.6	19	8.2	<5	**	<5	**	233
91202	<5	**	213	85.5	24	9.6	<5	**	8	3.2	249
91203	<5	**	130	86.1	15	9.9	<5	**	<5	**	151
91204	<5	**	165	90.2	15	8.2	<5	**	<5	**	183
91205	<5	**	359	85.3	50	11.9	5	1.2	7	1.7	421
91206	<5	**	285	85.8	36	10.8	6	1.8	5	1.5	332
91207	<5	**	85	90.4	5	5.3	<5	**	<5	**	94
91208	<5	**	131	88.5	7	4.7	5	3.4	5	3.4	148
91210	<5	**	5	71.4	<5	**	<5	**	<5	**	7
91214	<5	**	202	88.2	22	9.6	<5	**	<5	**	229
91301	<5	**	155	92.8	7	4.2	<5	**	<5	**	167
91302	<5	**	169	90.9	5	2.7	<5	**	9	4.8	186
91303	<5	**	376	92.4	23	5.7	6	1.5	<5	**	407
91304	<5	**	523	91.4	30	5.2	12	2.1	5	0.9	572
91305	<5	**	<5	**	<5	**	<5	**	<5	**	1
91306	<5	**	560	88.8	55	8.7	6	1.0	8	1.3	631
91307	<5	**	168	94.4	<5	**	<5	**	<5	**	178
91309	<5	**	<5	**	<5	**	<5	**	<5	**	1
91311	<5	**	291	90.4	22	6.8	<5	**	6	1.9	322
91316	<5	**	300	87.7	17	5.0	<5	**	21	6.1	342
91321	<5	**	370	83.2	55	12.4	13	2.9	5	1.1	445
91322	<5	**	<5	**	<5	**	<5	**	<5	**	1
91324	<5	**	254	86.7	22	7.5	11	3.8	<5	**	293
91325	<5	**	302	89.4	25	7.4	6	1.8	<5	**	338
91326	<5	**	260	90.9	13	4.6	7	2.5	6	2.1	286
91328	<5	**	<5	**	<5	**	<5	**	<5	**	1
91331	<5	**	1,337	85.2	177	11.3	47	3.0	7	0.5	1,569
91333	<5	**	<5	**	<5	**	<5	**	<5	**	1
91334	<5	**	<5	**	<5	**	<5	**	<5	**	1
91335	<5	**	831	88.6	88	9.4	8	0.9	9	1.0	938

Los Angeles County - Department of Public Health  
**Entry Into Prenatal Care (PNC) By Zip Code\***

Los Angeles County, 2012

Mother's Residential Zip Code	Mother's Trimester Prenatal Care Began										Total Live Births
	No Prenatal Care		First Trimester		Second Trimester		Third Trimester		Unknown		
	Number	Percent	Number	Percent	Number	Percent	Number	Percent	Number	Percent	
91340	<5	**	460	86.6	53	10.0	12	2.3	<5	**	531
91342	8	0.6	1,068	85.5	139	11.1	28	2.2	6	0.5	1,249
91343	<5	**	773	89.4	70	8.1	15	1.7	5	0.6	865
91344	<5	**	430	87.8	38	7.8	13	2.7	8	1.6	490
91345	<5	**	201	90.1	18	8.1	<5	**	<5	**	223
91346	<5	**	<5	**	<5	**	<5	**	<5	**	1
91350	<5	**	332	90.7	27	7.4	5	1.4	<5	**	366
91351	<5	**	341	85.3	50	12.5	8	2.0	<5	**	400
91352	<5	**	587	86.2	70	10.3	13	1.9	8	1.2	681
91353	<5	**	<5	**	<5	**	<5	**	<5	**	2
91354	<5	**	267	90.8	20	6.8	<5	**	<5	**	294
91355	<5	**	283	87.4	32	9.9	<5	**	<5	**	324
91356	<5	**	274	87.3	26	8.3	<5	**	11	3.5	314
91357	<5	**	<5	**	<5	**	<5	**	<5	**	2
91361	<5	**	19	90.5	<5	**	<5	**	<5	**	21
91362	<5	**	<5	**	<5	**	<5	**	<5	**	3
91363	<5	**	<5	**	<5	**	<5	**	<5	**	1
91364	<5	**	225	90.7	13	5.2	<5	**	9	3.6	248
91365	<5	**	<5	**	<5	**	<5	**	<5	**	1
91367	<5	**	394	93.1	14	3.3	8	1.9	7	1.7	423
91370	<5	**	<5	**	<5	**	<5	**	<5	**	1
91381	<5	**	136	88.9	12	7.8	<5	**	<5	**	153
91384	<5	**	226	87.6	23	8.9	7	2.7	<5	**	258
91386	<5	**	<5	**	<5	**	<5	**	<5	**	2
91387	<5	**	476	86.4	59	10.7	7	1.3	7	1.3	551
91390	<5	**	127	87.0	15	10.3	<5	**	<5	**	146
91401	<5	**	441	86.5	43	8.4	8	1.6	18	3.5	510
91402	5	0.4	1,008	89.3	80	7.1	32	2.8	<5	**	1,129
91403	<5	**	256	86.5	14	4.7	<5	**	23	7.8	296
91404	<5	**	<5	**	<5	**	<5	**	<5	**	2
91405	<5	**	699	89.6	58	7.4	15	1.9	6	0.8	780
91406	<5	**	656	89.0	62	8.4	9	1.2	9	1.2	737
91410	<5	**	<5	**	<5	**	<5	**	<5	**	1
91411	<5	**	359	89.8	24	6.0	9	2.3	7	1.8	400
91413	<5	**	<5	**	<5	**	<5	**	<5	**	4
91423	<5	**	327	84.7	21	5.4	<5	**	34	8.8	386
91436	<5	**	101	87.1	5	4.3	<5	**	10	8.6	116
91450	<5	**	<5	**	<5	**	<5	**	<5	**	1
91501	<5	**	176	90.7	16	8.3	<5	**	<5	**	194
91502	<5	**	91	85.1	12	11.2	<5	**	<5	**	107
91504	<5	**	246	85.4	27	9.4	5	1.7	8	2.8	288
91505	<5	**	296	90.5	27	8.3	<5	**	<5	**	327
91506	<5	**	158	89.3	10	5.7	<5	**	6	3.4	177
91507	<5	**	<5	**	<5	**	<5	**	<5	**	1
91601	<5	**	361	84.5	41	9.6	9	2.1	15	3.5	427
91602	<5	**	194	89.8	14	6.5	<5	**	7	3.2	216
91604	<5	**	263	81.4	15	4.6	<5	**	41	12.7	323
91605	<5	**	718	88.1	80	9.8	12	1.5	<5	**	815
91606	<5	**	475	83.8	68	12.0	16	2.8	6	1.1	567
91607	<5	**	286	83.6	27	7.9	<5	**	25	7.3	342
91608	<5	**	<5	**	<5	**	<5	**	<5	**	1
91609	<5	**	<5	**	<5	**	<5	**	<5	**	1
91702	<5	**	695	81.2	97	11.3	27	3.2	34	4.0	856
91706	<5	**	990	86.5	108	9.4	15	1.3	30	2.6	1,145
91709	<5	**	<5	**	<5	**	<5	**	<5	**	1
91711	<5	**	219	89.0	21	8.5	<5	**	<5	**	246
91722	<5	**	399	87.3	44	9.6	<5	**	9	2.0	457
91723	<5	**	182	86.7	18	8.6	<5	**	<5	**	210
91724	<5	**	245	88.8	18	6.5	7	2.5	5	1.8	276
91731	<5	**	354	79.4	50	11.2	8	1.8	34	7.6	446
91732	8	0.8	781	78.4	113	11.4	28	2.8	66	6.6	996
91733	6	0.9	561	79.8	73	10.4	12	1.7	51	7.3	703
91734	<5	**	<5	**	<5	**	<5	**	<5	**	2

Los Angeles County - Department of Public Health  
**Entry Into Prenatal Care (PNC) By Zip Code\***

Los Angeles County, 2012

Mother's Residential Zip Code	Mother's Trimester Prenatal Care Began										Total Live Births
	No Prenatal Care		First Trimester		Second Trimester		Third Trimester		Unknown		
	Number	Percent	Number	Percent	Number	Percent	Number	Percent	Number	Percent	
91740	<5	**	222	90.2	18	7.3	<5	**	<5	**	246
91741	<5	**	192	92.8	10	4.8	<5	**	<5	**	207
91744	5	0.4	1,197	87.9	120	8.8	21	1.5	19	1.4	1,362
91745	<5	**	622	78.4	88	11.1	34	4.3	48	6.1	793
91746	<5	**	422	87.0	50	10.3	<5	**	9	1.9	485
91748	<5	**	1,395	67.2	236	11.4	127	6.1	317	15.3	2,075
91750	<5	**	218	92.4	14	5.9	<5	**	<5	**	236
91754	<5	**	323	75.3	45	10.5	12	2.8	49	11.4	429
91755	<5	**	366	70.3	39	7.5	24	4.6	92	17.7	521
91764	<5	**	<5	**	<5	**	<5	**	<5	**	1
91765	<5	**	439	86.9	28	5.5	15	3.0	23	4.6	505
91766	5	0.4	991	83.3	118	9.9	27	2.3	49	4.1	1,190
91767	5	0.6	682	87.2	65	8.3	11	1.4	19	2.4	782
91768	<5	**	442	84.5	50	9.6	10	1.9	17	3.3	523
91770	<5	**	711	76.3	79	8.5	12	1.3	128	13.7	932
91771	<5	**	<5	**	<5	**	<5	**	<5	**	1
91773	<5	**	267	90.2	20	6.8	<5	**	6	2.0	296
91775	<5	**	257	82.6	26	8.4	5	1.6	23	7.4	311
91776	<5	**	454	81.7	56	10.1	14	2.5	32	5.8	556
91778	<5	**	<5	**	<5	**	<5	**	<5	**	1
91780	<5	**	333	87.6	25	6.6	6	1.6	15	4.0	380
91788	<5	**	<5	**	<5	**	<5	**	<5	**	1
91789	<5	**	340	74.2	60	13.1	23	5.0	33	7.2	458
91790	<5	**	514	90.2	45	7.9	5	0.9	6	1.1	570
91791	<5	**	356	87.3	37	9.1	5	1.2	9	2.2	408
91792	<5	**	327	87.2	33	8.8	7	1.9	7	1.9	375
91801	<5	**	572	85.9	49	7.4	15	2.3	30	4.5	666
91802	<5	**	<5	**	<5	**	<5	**	<5	**	1
91803	<5	**	311	84.7	38	10.4	<5	**	14	3.8	367
92404	<5	**	<5	**	<5	**	<5	**	<5	**	2
92506	<5	**	<5	**	<5	**	<5	**	<5	**	1
93021	<5	**	<5	**	<5	**	<5	**	<5	**	1
93243	<5	**	<5	**	<5	**	<5	**	<5	**	1
93312	<5	**	<5	**	<5	**	<5	**	<5	**	1
93510	<5	**	33	80.5	8	19.5	<5	**	<5	**	41
93532	<5	**	21	87.5	<5	**	<5	**	<5	**	24
93534	8	1.1	440	61.7	226	31.7	38	5.3	<5	**	713
93535	12	0.9	845	64.9	386	29.7	53	4.1	6	0.5	1,302
93536	7	0.9	567	71.6	185	23.4	29	3.7	<5	**	792
93539	<5	**	<5	**	<5	**	<5	**	<5	**	2
93543	<5	**	114	58.8	69	35.6	10	5.2	<5	**	194
93544	<5	**	<5	**	<5	**	<5	**	<5	**	4
93550	7	0.5	844	61.4	455	33.1	61	4.4	8	0.6	1,375
93551	<5	**	426	75.8	107	19.0	18	3.2	8	1.4	562
93552	6	1.0	402	68.4	149	25.3	26	4.4	5	0.9	588
93553	<5	**	8	80.0	<5	**	<5	**	<5	**	10
93563	<5	**	<5	**	<5	**	<5	**	<5	**	1
93591	<5	**	54	58.7	29	31.5	7	7.6	<5	**	92
<b>Total</b>	<b>490</b>		<b>106,996</b>		<b>14,905</b>		<b>3,513</b>		<b>5,793</b>		<b>131,697</b>

Note: "Trimester Prenatal Care Began" excludes the prenatal care experiences of all women whose pregnancies did not result in a live birth.

\*\* Results not calculated if less than 5 cases

Source: California Department of Public Health, Center for Health Statistics, OHIR Vital Statistics Section, 2012