

Prenatal Care

TITLE V INDICATOR TEMPLATE

INDICATOR: First Trimester Onset of Prenatal Care (PNC)

DEFINITION: The percent of live born infants whose mothers received prenatal care in the first trimester of pregnancy

NUMERATOR: The number of live births to women who received prenatal care during the first trimester, by place of residence, in a calendar year

DENOMINATOR: The total number of live births, by place of residence, in a calendar year

HEALTHY PEOPLE 2010 OBJECTIVE:

Increase the proportion of pregnant women who receive prenatal care in the first trimester of pregnancy to 90 percent of live births.
(Baseline: 83 percent of live births in 1998) (Objective 16-6a)

HEALTHY PEOPLE 2020 OBJECTIVE:

Increase the proportion of pregnant women who receive prenatal care in the first trimester of pregnancy to 77.9 percent of live births.
(Baseline: 70.8 percent of pregnant women in 2007) (Objective MICH-10.1)

RISK FACTORS: For not obtaining early prenatal care Low income; young maternal age/teen pregnancy; low maternal education level; race/ethnicity (African American, Hispanic, American Indian/Alaska Native); high parity; maternal substance abuse; lack of health insurance; lack of obstetric providers

Year	California				Los Angeles County			
	First Trimester Prenatal Care		95% Confidence Interval		First Trimester Prenatal Care		95% Confidence Interval	
	Number	Percent	Lower	Upper	Number	Percent	Lower	Upper
2001	442,936	84.0	83.9	84.1	132,776	86.5	86.3	86.7
2002	448,955	84.8	84.7	84.9	132,493	87.6	87.5	87.8
2003	464,156	85.8	85.7	85.9	136,609	89.8	89.6	89.9
2004	466,463	85.6	85.5	85.7	136,144	89.9	89.7	90.0
2005	470,955	85.8	85.7	85.9	136,020	90.5	90.3	90.6
2006	478,973	85.2	85.1	85.3	137,077	90.3	90.1	90.4
2007	459,188	80.9	80.8	81.0	129,741	85.5	85.3	85.6
2008	445,108	80.7	80.6	80.8	123,251	83.5	83.3	83.6
2009	428,449	81.3	81.2	81.4	116,717	83.6	83.4	83.8
2010	416,759	81.7	81.6	81.8	110,516	83.0	82.8	83.2

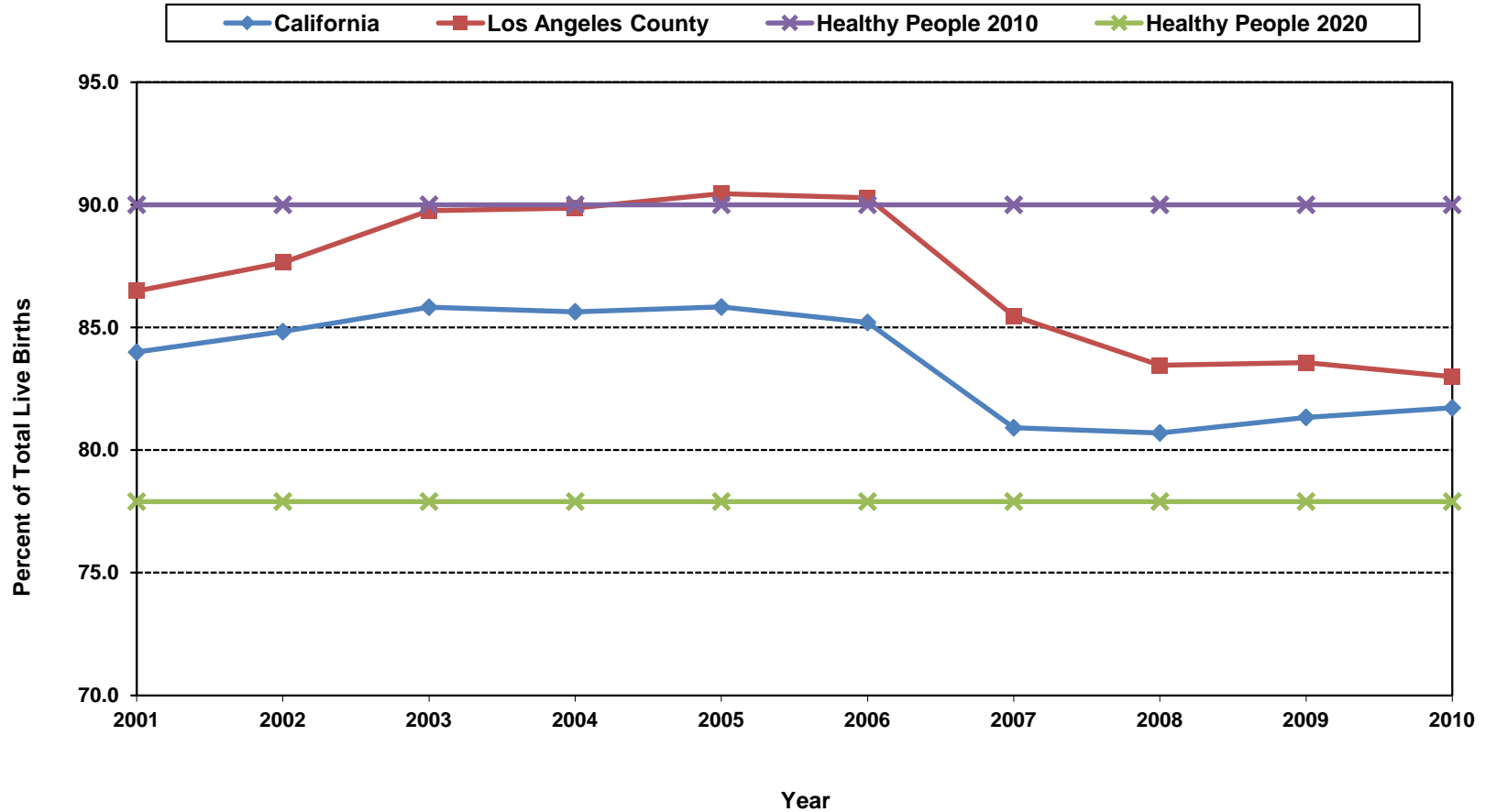
Denominator: Live Births		
Year	California	LA County
2001	527,371	153,523
2002	529,245	151,167
2003	540,827	152,192
2004	544,685	151,504
2005	548,700	150,377
2006	562,157	151,837
2007	567,527	151,813
2008	551,567	147,684
2009	526,774	139,679
2010	509,979	133,160

Note: The decrease in first-trimester entry in 2007 is due at least in part to a recategorization of this data in birth certificates.

This measure excludes the prenatal care experiences of all women whose pregnancies did not result in live births.

Source: California Department of Public Health, Center for Health Statistics, OHIR Vital Statistics Section, 2001-2010.

**Percent of First Trimester Onset of Prenatal Care
California vs. Los Angeles County, 2001-2010**



Year 2010 Objective: Increase the proportion of pregnant women who receive prenatal care in the first trimester of pregnancy to 90 percent of live births.

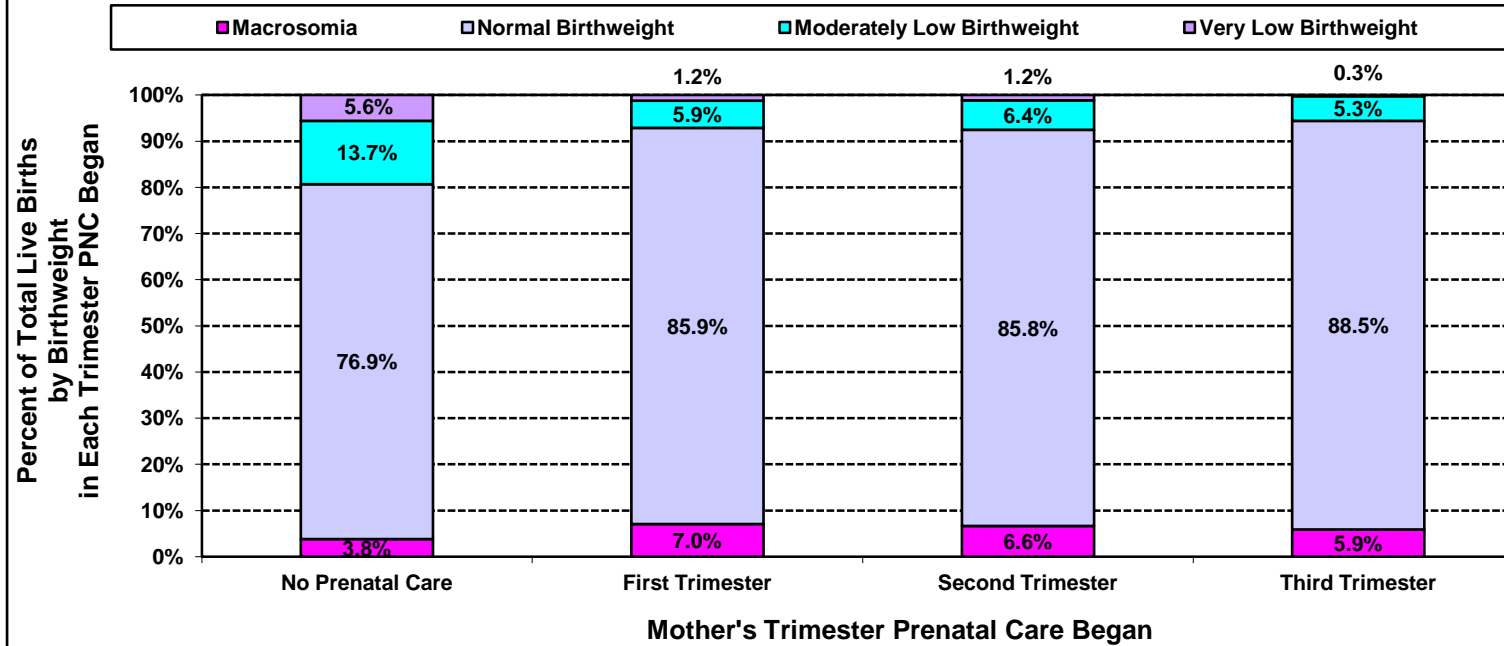
Year 2020 Objective: Increase the proportion of pregnant women who receive prenatal care in the first trimester of pregnancy to 77.9 percent of live births.

Note: The decrease in first-trimester entry in 2007 is due at least in part to a recategorization of this data in birth certificates.

This measure excludes the prenatal care experiences of all women whose pregnancies did not result in live births.

Source: California Department of Public Health, Center for Health Statistics, OHIR Vital Statistics Section, 2001-2010.

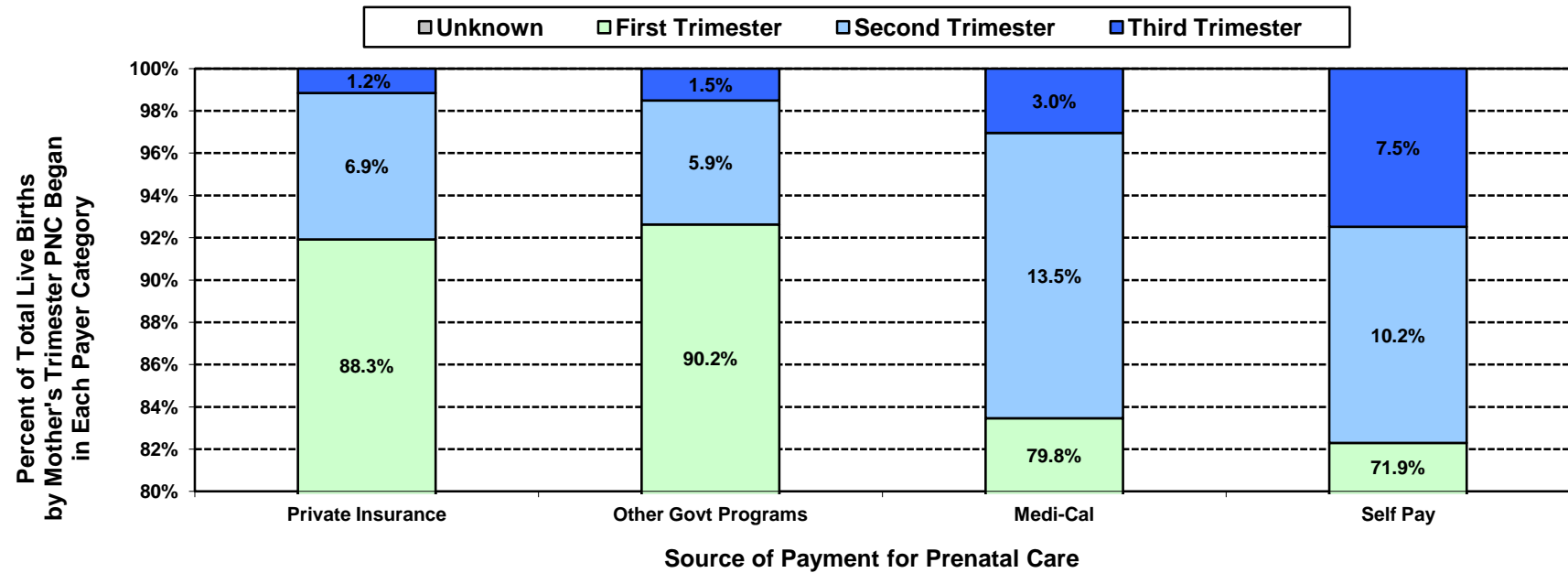
**Percent of Total Live Births
by Birthweight and by Mother's Trimester Prenatal Care (PNC) Began
Los Angeles County, 2010**



Los Angeles County, 2010									
Mother's Trimester Prenatal Care Began	Very Low Birthweight		Moderately Low Birthweight		Normal Birthweight		Macrosomia		Total Live Births
	0 to 1,499 grams		1,500 to 2,499 grams		2,500 to 3,999 grams		4,000+ grams		
	Number	Percent	Number	Percent	Number	Percent	Number	Percent	
No Prenatal Care	22	5.6	54	13.7	303	76.9	15	3.8	394
First	1,346	1.2	6,497	5.9	94,883	85.9	7,790	7.0	110,516
Second	163	1.2	892	6.4	12,035	85.8	932	6.6	14,022
Third	8	0.3	167	5.3	2,772	88.5	185	5.9	3,132
Unknown	140	2.7	432	8.5	4,187	82.2	337	6.6	5,096
Total	1,679	1.3	8,042	6.0	114,180	85.7	9,259	7.0	133,160

Note: "Trimester Prenatal Care Began" excludes the prenatal care experiences of all women whose pregnancies did not result in a live birth.
Source: California Department of Public Health, Center for Health Statistics, OHIR Vital Statistics Section, 2010

**Percent of Total Live Births by Mother's Trimester Prenatal Care (PNC) Began
and by Source of Payment for Prenatal Care (PNC)
Los Angeles County, 2010**



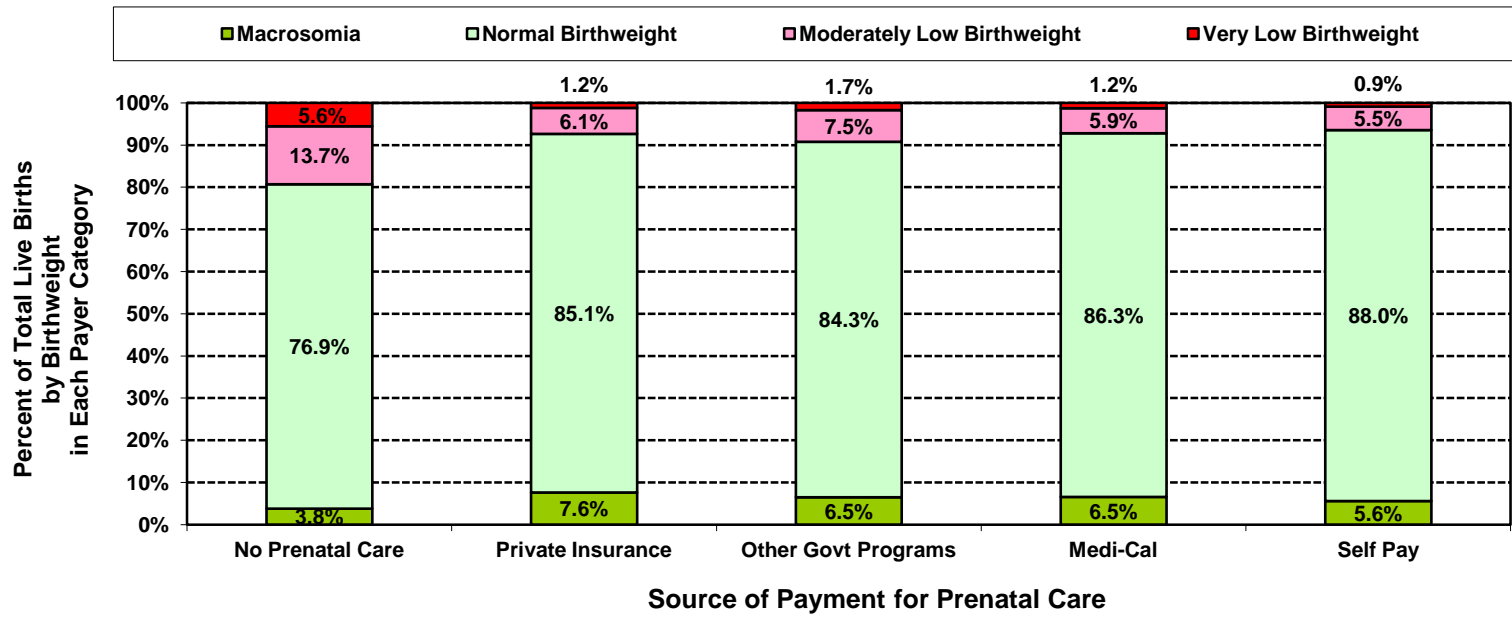
Los Angeles County, 2010											
Source of Payment for Prenatal Care	No Prenatal Care		Mother's Trimester Prenatal Care Began						Unknown		Total Live Births
			First		Second		Third				
	Number	Percent	Number	Percent	Number	Percent	Number	Percent	Number	Percent	
No Prenatal Care	394	100.0	<5	N/C	<5	N/C	<5	N/C	<5	N/C	394
Private Insurance	<5	N/C	47,090	88.3	3,696	6.9	616	1.2	1,947	3.6	53,349
Other Govt Programs	<5	N/C	1,908	90.2	124	5.9	32	1.5	51	2.4	2,115
Medi-Cal	<5	N/C	56,983	79.8	9,637	13.5	2,173	3.0	2,604	3.6	71,397
Self Pay	<5	N/C	2,507	71.9	357	10.2	261	7.5	364	10.4	3,489
Other/Unknown	<5	N/C	2,028	83.9	208	8.6	50	2.1	130	5.4	2,416
Total	394	0.3	110,516	83.0	14,022	10.5	3,132	2.4	5,096	3.8	133,160

Note: "Trimester Prenatal Care Began" excludes the prenatal care experiences of all women whose pregnancies did not result in a live birth.

Numbers fewer than 5 are shown as "<5". Rates are not calculated (N/C) if number is fewer than five.

Source: California Department of Public Health, Center for Health Statistics, OHIR Vital Statistics Section, 2010

**Percent of Total Live Births
by Birthweight and by Source of Payment for Prenatal Care (PNC)
Los Angeles County, 2010**

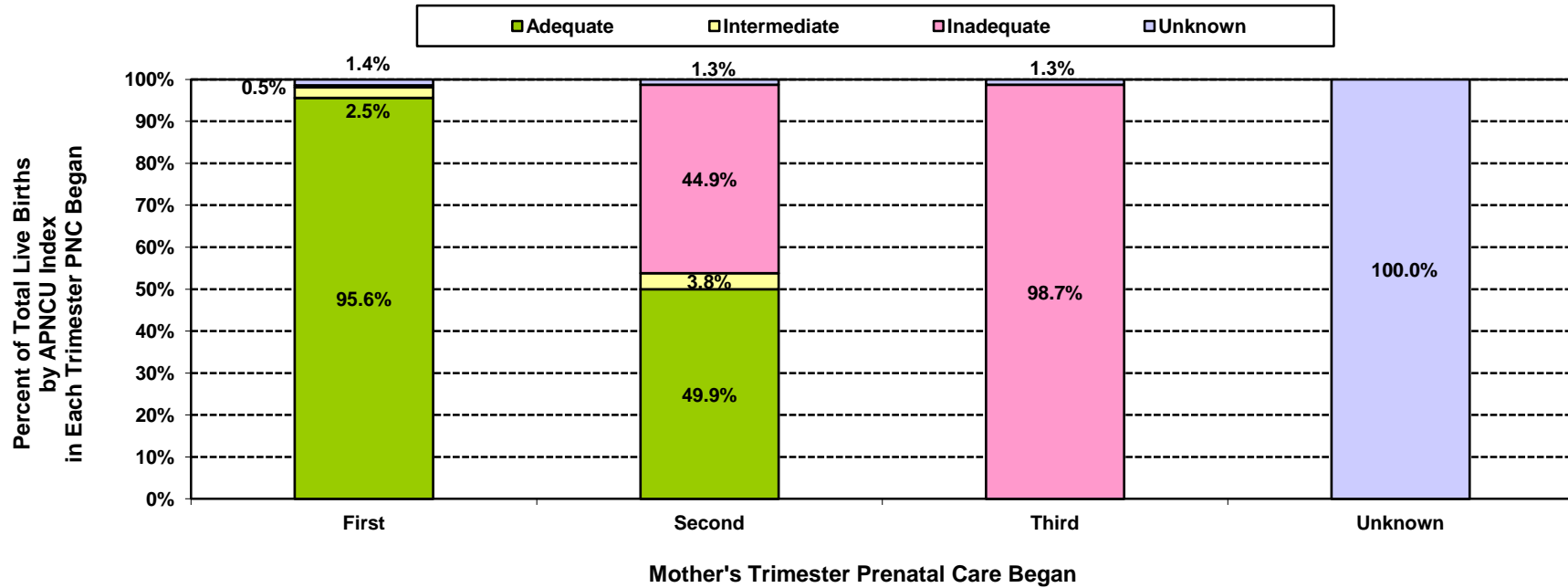


Los Angeles County, 2010									
Source of Payment for Prenatal Care	Very Low Birthweight		Moderately Low Birthweight		Normal Birthweight		Macrosumia		Total Live Births
	0 to 1,499 grams		1,500 to 2,499 grams		2,500 to 3,999 grams		4,000+ grams		
	Number	Percent	Number	Percent	Number	Percent	Number	Percent	
No Prenatal Care	22	5.6	54	13.7	303	76.9	15	3.8	394
Private Insurance	649	1.2	3,253	6.1	45,381	85.1	4,066	7.6	53,349
Other Govt Programs	37	1.7	158	7.5	1,783	84.3	137	6.5	2,115
Medi-Cal	886	1.2	4,240	5.9	61,617	86.3	4,654	6.5	71,397
Self Pay	31	0.9	193	5.5	3,070	88.0	195	5.6	3,489
Other/Unknown	54	2.2	144	6.0	2,026	83.9	192	7.9	2,416
Total	1,679	1.3	8,042	6.0	114,180	85.7	9,259	7.0	133,160

Note: "Trimester Prenatal Care Began" excludes the prenatal care experiences of all women whose pregnancies did not result in a live birth.

Source: California Department of Public Health, Center for Health Statistics, OHIR Vital Statistics Section, 2010

**Percent of Total Live Births by Adequacy of Prenatal Care Utilization Index
and by Mother's Trimester Prenatal Care (PNC) Began
Los Angeles County, 2010**

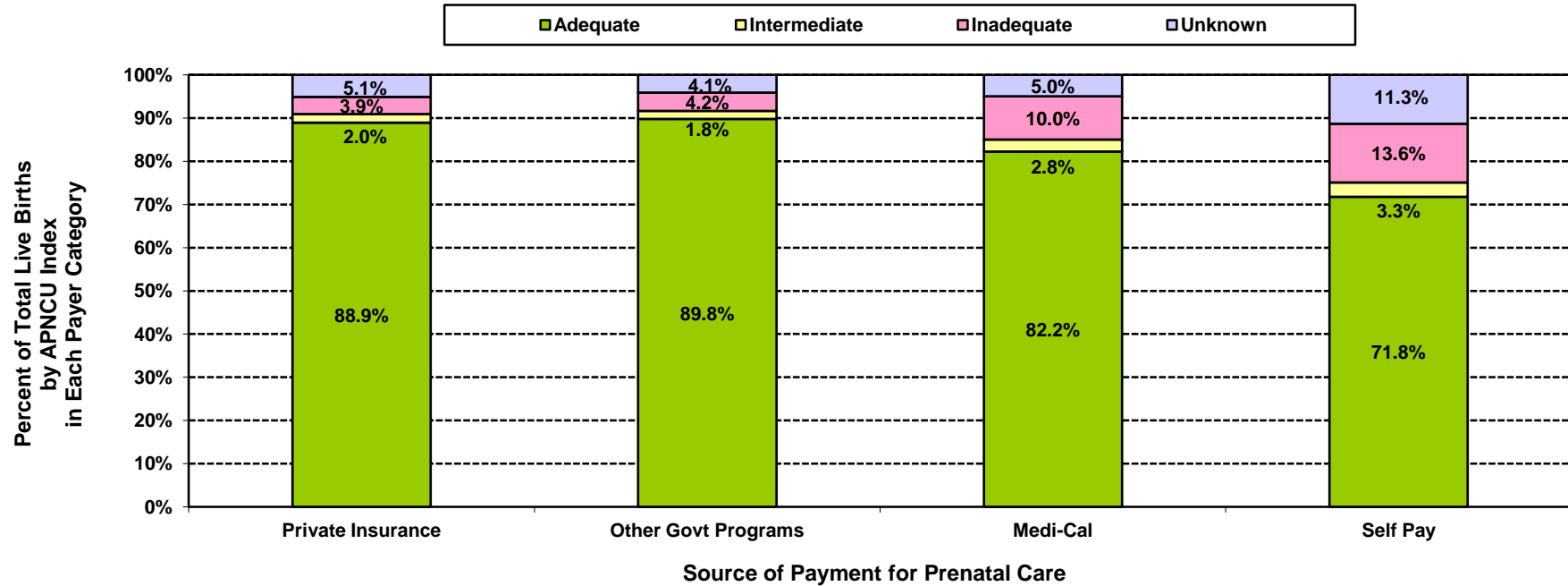


Los Angeles County, 2010									
Mother's Trimester Prenatal Care Began	Adequacy of Prenatal Care Utilization Index						Unknown		Total Live Births
	Adequate		Intermediate		Inadequate		Number	Percent	
	Number	Percent	Number	Percent	Number	Percent			
No Prenatal Care	<5	N/C	<5	N/C	394	100.0	<5	N/C	394
First	105,628	95.6	2,754	2.5	535	0.5	1,599	1.4	110,516
Second	7,003	49.9	538	3.8	6,302	44.9	179	1.3	14,022
Third	<5	N/C	<5	N/C	3,091	98.7	41	1.3	3,132
Unknown	<5	N/C	<5	N/C	<5	N/C	5,096	100.0	5,096
Total	112,631	84.6	3,292	2.5	10,322	7.8	6,915	5.2	133,160

Note: "Trimester Prenatal Care Began" excludes the prenatal care experiences of all women whose pregnancies did not result in a live birth. Numbers fewer than 5 are shown as "<5". Rates are not calculated (N/C) if number is fewer than five.

Source: California Department of Public Health, Center for Health Statistics, OHIR Vital Statistics Section, 2010

**Percent of Total Live Births by Adequacy of Prenatal Care Utilization Index
and by Source of Payment for Prenatal Care (PNC)
Los Angeles County, 2010**



Los Angeles County, 2010									
Source of Payment for Prenatal Care	Adequacy of Prenatal Care Utilization Index						Unknown		Total Live Births
	Adequate		Intermediate		Inadequate		Number	Percent	
	Number	Percent	Number	Percent	Number	Percent			
No Prenatal Care	<5	N/C	<5	N/C	394	100.0	<5	N/C	394
Private Insurance	47,439	88.9	1,088	2.0	2,090	3.9	2,732	5.1	53,349
Other Govt Programs	1,900	89.8	39	1.8	89	4.2	87	4.1	2,115
Medi-Cal	58,705	82.2	2,008	2.8	7,125	10.0	3,559	5.0	71,397
Self Pay	2,505	71.8	114	3.3	474	13.6	396	11.3	3,489
Other/Unknown	2,082	86.2	43	1.8	150	6.2	141	5.8	2,416
Total	112,631	84.6	3,292	2.5	10,322	7.8	6,915	5.2	133,160

Note: Numbers fewer than 5 are shown as "<5". Rates are not calculated (N/C) if number is fewer than five.
Source: California Department of Public Health, Center for Health Statistics, OHIR Vital Statistics Section, 2010

TITLE V INDICATOR TEMPLATE

INDICATOR: Percent of Total Live Births by Adequacy of Prenatal Care Utilization (APNCU) Index

DEFINITION: The percent of live born infants whose mothers received adequate prenatal care as defined by the Adequacy of Prenatal Care Utilization Index (APNCU) developed by Milton Kotelchuck. This index does not assess the quality of the prenatal care that is delivered.

NUMERATOR: The number of live births to women who received adequate care, as defined by the APNCU criteria, by place of residence, in a calendar year

DENOMINATOR: The total number of live births, by place of residence, in a calendar year

HEALTHY PEOPLE 2010 OBJECTIVE:
 Increase the proportion of all pregnant women who receive early and adequate prenatal care to 90 percent of live births.
 (Baseline: 74 percent of live births in 1998) (Objective 16-6b)

HEALTHY PEOPLE 2020 OBJECTIVE:
 Increase the proportion of pregnant women who receive early and adequate prenatal care to 77.6 percent of live births.
 (Baseline: 70.5 percent of pregnant women in 2007) (Objective MICH-10.2)

RISK FACTORS: **Inadequate Prenatal Care**
 Low income; young maternal age/teen pregnancy; low maternal education level; race/ethnicity (African American, Hispanic, American Indian/Alaskan Native); high parity; maternal substance abuse; lack of health insurance; lack of obstetric providers

Year	California				Los Angeles County			
	Adequate Prenatal Care		95% Confidence Interval		Adequate Prenatal Care		95% Confidence Interval	
	Number	Percent	Lower	Upper	Number	Percent	Lower	Upper
2001	437,754	83.0	82.9	83.1	129,516	84.4	84.2	84.5
2002	442,146	83.5	83.4	83.6	128,984	85.3	85.1	85.5
2003	455,424	84.2	84.1	84.3	132,229	86.9	86.7	87.1
2004	459,050	84.3	84.2	84.4	132,531	87.5	87.3	87.6
2005	469,208	85.5	85.4	85.6	134,611	89.5	89.4	89.7
2006	480,255	85.4	85.3	85.5	135,961	89.5	89.4	89.7
2007	N/A	N/A	N/A	N/A	130,333	85.9	85.7	86.0
2008	N/A	N/A	N/A	N/A	124,381	84.2	84.0	84.4
2009	N/A	N/A	N/A	N/A	119,111	85.3	85.1	85.5
2010	N/A	N/A	N/A	N/A	112,631	84.6	84.4	84.8

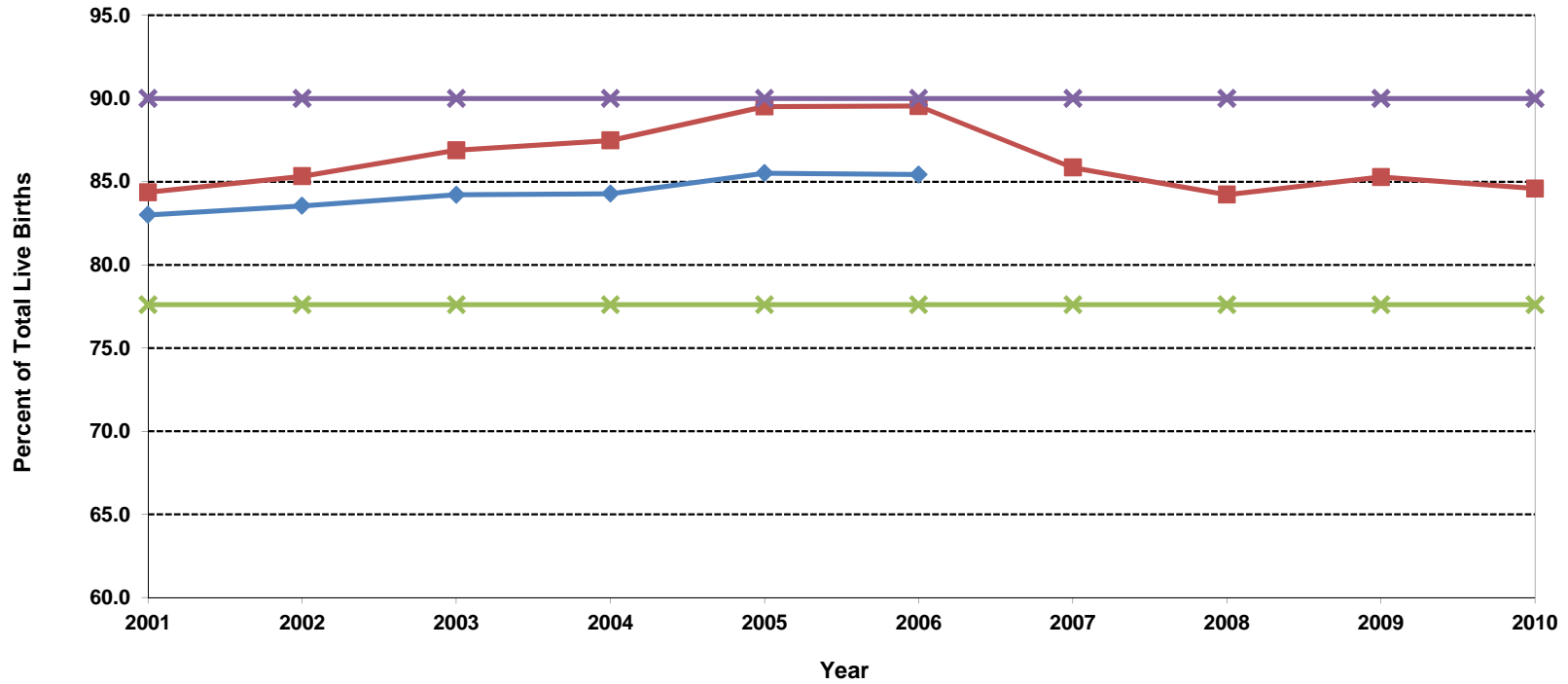
Denominator: Live Births		
Year	California	LA County
2001	527,371	153,523
2002	529,245	151,167
2003	540,827	152,192
2004	544,685	151,504
2005	548,700	150,377
2006	562,157	151,837
2007	567,527	151,813
2008	551,567	147,684
2009	526,774	139,679
2010	509,979	133,160

Note: The APNCU Index measures prenatal care utilization, which includes consideration of the month prenatal care began and the number of prenatal care visits during the time mothers actually received prenatal care. This utilization index is based on the recommendations established by the American College of Obstetrics and Gynecologists (ACOG). Appendix A contains the specific criteria for timing and number of prenatal care visits that are used to assign adequacy categories. Due to the change in methodology for calculating the Kotelchuck Index, data presented may not be comparable to those published in previous FHOP reports.
 N/A: 2007 - 2010 data for California not available for retrieval

Source: California Department of Public Health, Center for Health Statistics, OHIR Vital Statistics Section, 2001-2010.

**Percent of Total Live Births with "Adequate" Prenatal Care
as Rated by Kotelchuck (APNCU) Index
California vs. Los Angeles County, 2001-2010**

—◆— California —■— Los Angeles County —×— Health People 2010 —×— Health People 2020



Year 2010 Objective: Increase the proportion of pregnant women who receive early and adequate prenatal care to 90 percent of live births.

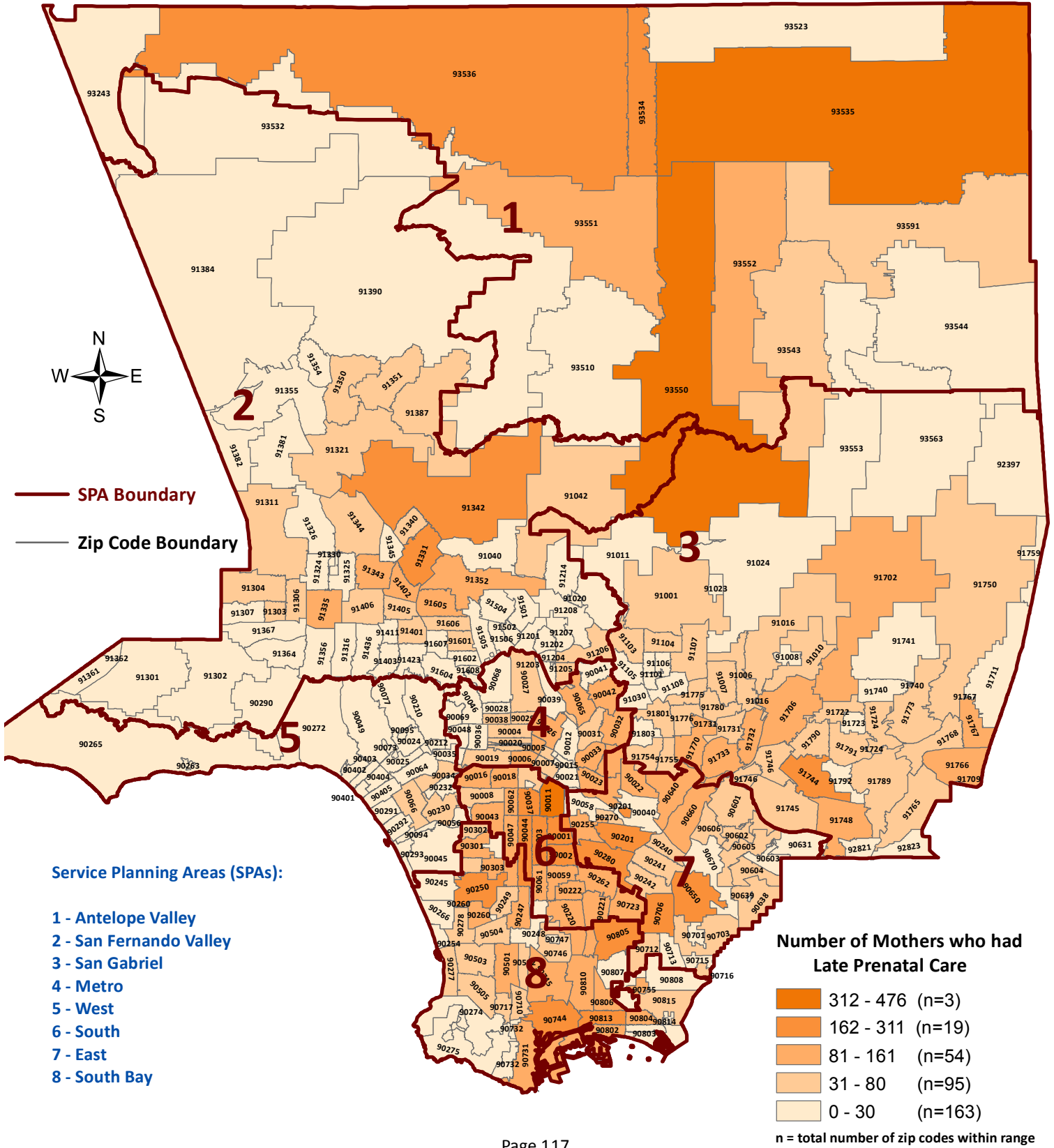
Year 2020 Objective: Increase the proportion of pregnant women who receive early and adequate prenatal care to 77.6 percent of live births.

Note: The APNCU Index measures prenatal care utilization, which includes consideration of the month prenatal care began and the number of prenatal care visits during the time mothers actually received prenatal care. This utilization index is based on the recommendations established by the American College of Obstetrics and Gynecologists (ACOG). Appendix A contains the specific criteria for timing and number of prenatal care visits that are used to assign adequacy categories.

Due to the change in methodology for calculating the Kotelchuck Index, data presented may not be comparable to those published in previous FHOP reports.

Source: California Department of Public Health, Center for Health Statistics, OHIR Vital Statistics Section, 2001-2010.

Los Angeles County - Department of Public Health
Number of Live Births by Mothers who had Late Prenatal Care by Zip Code* and Service Planning Area (SPA)
Los Angeles County, 2010



*Los Angeles County zip code boundaries as of April 2007

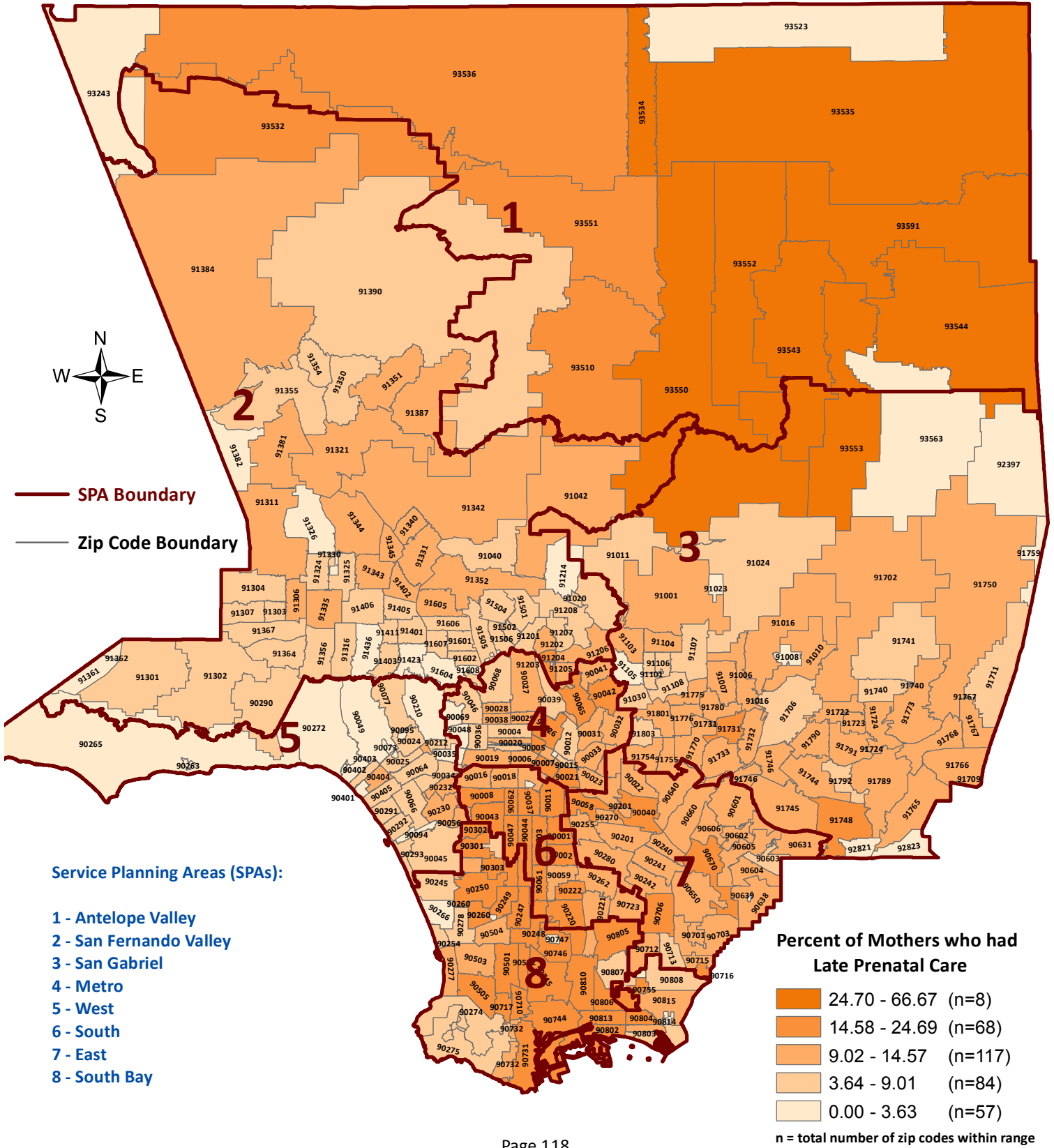
Total number of live births in Los Angeles County, 2010= 133,160

Note: Prenatal care that begins in the second or third trimester is considered late.

Zip code 90704 (Catalina Island) is not included. Total number of mothers who had late prenatal care in 90704, 2010 = 9

Source : California Department of Public Health, Center for Health Statistics, OHIR Vital Statistics Section, 2010.

Los Angeles County - Department of Public Health
Percent of Live Births by Mothers who had Late Prenatal Care by Zip Code* and Service Planning Area (SPA)
Los Angeles County, 2010



*Los Angeles County zip code boundaries as of April 2007

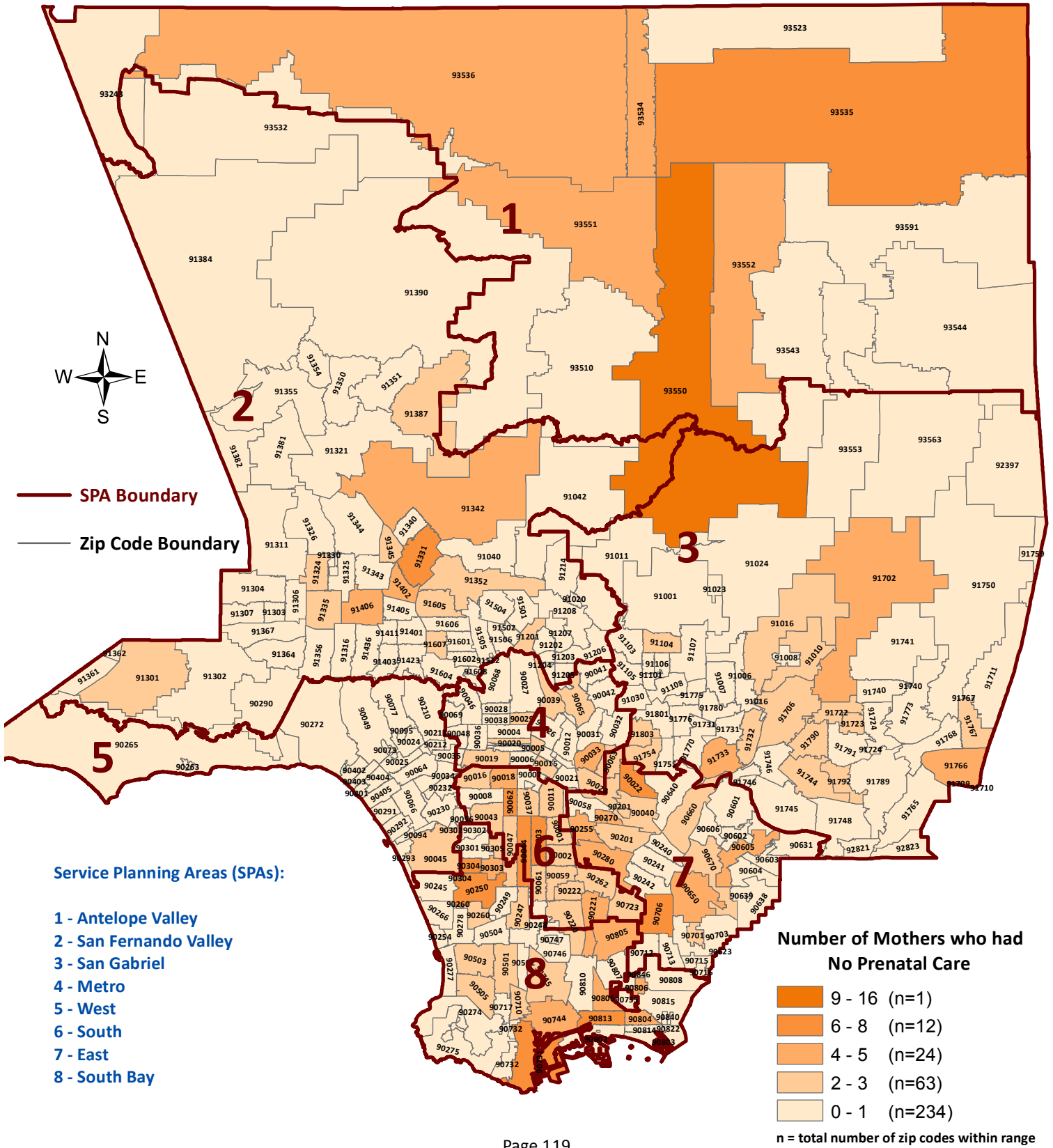
Total number of live births in Los Angeles County, 2010= 133,160

Note: Prenatal care that begins in the second or third trimester is considered late.

Zip code 90704 (Catalina Island) is not included. Percent of mothers who had late prenatal care in 90704, 2010 = 19.57

Source : California Department of Public Health, Center for Health Statistics, OHIR Vital Statistics Section, 2010.

Los Angeles County - Department of Public Health
Number of Live Births by Mothers who had No Prenatal Care by Zip Code* and Service Planning Area (SPA)
Los Angeles County, 2010



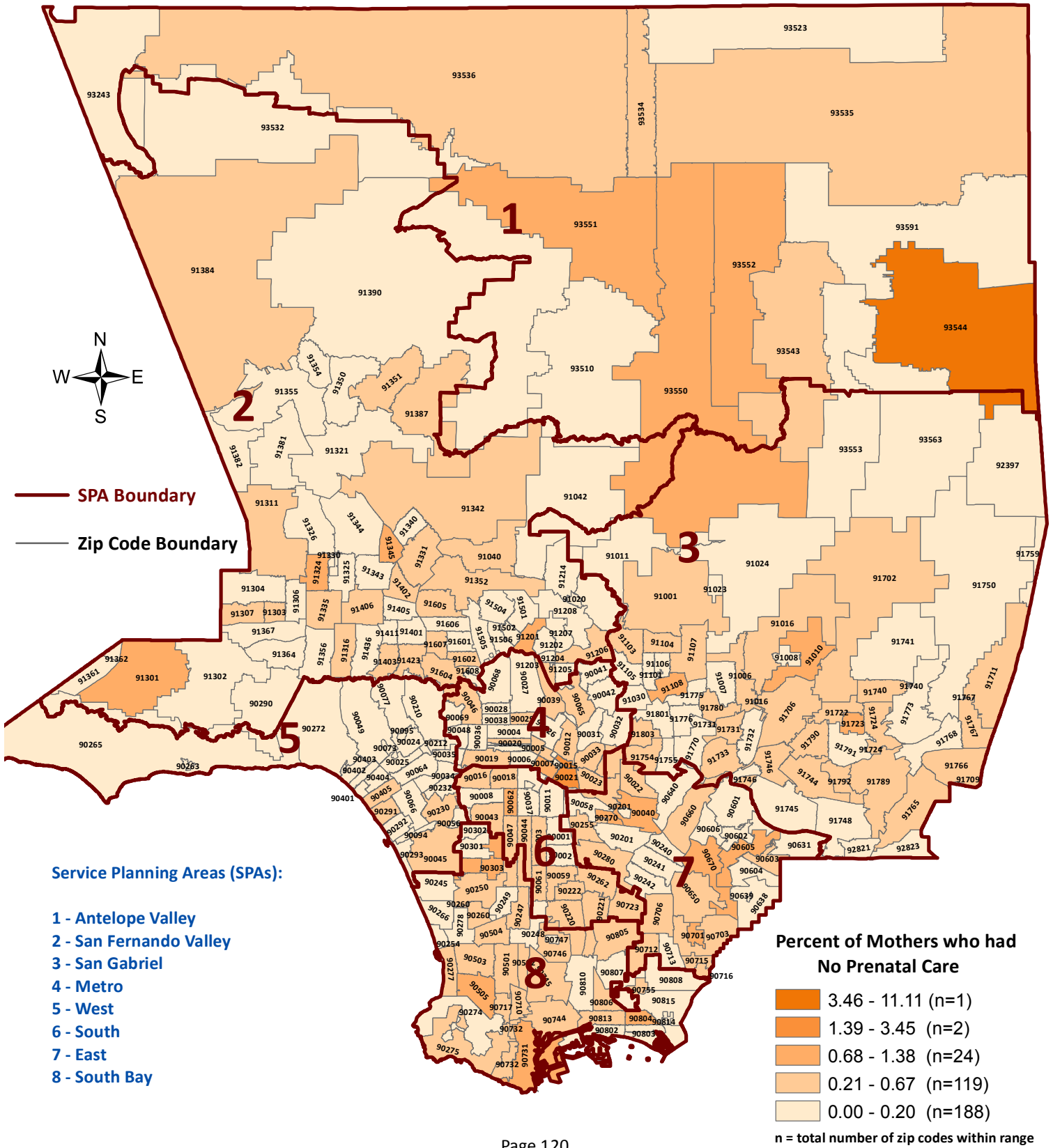
*Los Angeles County zip code boundaries as of April 2007

Total number of live births in Los Angeles County, 2010 = 133,160

Zip code 90704 (Catalina Island) is not included. Total number of mothers who had no prenatal care in 90704, 2010 = 0

Source: California Department of Public Health, Center for Health Statistics, OHIR Vital Statistics Section, 2010.

Los Angeles County - Department of Public Health
Percent of Live Births by Mothers who had No Prenatal Care by Zip Code* and Service Planning Area (SPA)
Los Angeles County, 2010



*Los Angeles County zip code boundaries as of April 2007

Total number of live births in Los Angeles County, 2010= 133,160

Zip code 90704 (Catalina Island) is not included. Percent of mothers who had no prenatal care in 90704, 2010 = 0.00%

Source : California Department of Public Health, Center for Health Statistics, OHIR Vital Statistics Section, 2010.

Los Angeles County - Department of Public Health
Entry Into Prenatal Care (PNC) By Zip Code*
 Los Angeles County, 2010

Mother's Residential Zip Code	Mother's Trimester Prenatal Care Began										Total Live Births
	No Prenatal Care		First Trimester		Second Trimester		Third Trimester		Unknown		
	Number	Percent	Number	Percent	Number	Percent	Number	Percent	Number	Percent	
Missing	<5	**	<5	**	<5	**	<5	**	8	80.0	10
90001	<5	**	958	79.7	149	12.4	31	2.6	62	5.2	1,202
90002	<5	**	913	80.0	139	12.2	37	3.2	51	4.5	1,142
90003	6	0.4	1,168	76.4	201	13.2	57	3.7	97	6.3	1,529
90004	<5	**	706	87.3	52	6.4	17	2.1	33	4.1	809
90005	<5	**	460	89.5	28	5.5	7	1.4	18	3.5	514
90006	<5	**	845	83.9	106	10.5	29	2.9	27	2.7	1,007
90007	<5	**	355	81.4	47	10.8	14	3.2	20	4.6	436
90008	<5	**	318	75.0	52	12.3	15	3.5	39	9.2	424
90009	<5	**	<5	**	<5	**	<5	**	<5	**	1
90010	<5	**	27	96.4	<5	**	<5	**	<5	**	28
90011	<5	**	1,685	73.1	341	14.8	109	4.7	166	7.2	2,304
90012	<5	**	197	88.7	12	5.4	<5	**	9	4.1	222
90013	<5	**	35	76.1	<5	**	<5	**	7	15.2	46
90014	<5	**	26	81.3	<5	**	<5	**	<5	**	32
90015	<5	**	208	77.0	38	14.1	9	3.3	12	4.4	270
90016	<5	**	539	78.0	75	10.9	18	2.6	57	8.3	691
90017	<5	**	339	84.5	42	10.5	9	2.2	10	2.5	401
90018	5	0.7	601	80.9	83	11.2	20	2.7	34	4.6	743
90019	<5	**	692	81.5	67	7.9	13	1.5	75	8.8	849
90020	<5	**	448	87.0	41	8.0	8	1.6	16	3.1	515
90021	<5	**	20	69.0	<5	**	<5	**	<5	**	29
90022	6	0.5	876	77.8	133	11.8	16	1.4	95	8.4	1,126
90023	<5	**	680	76.1	87	9.7	16	1.8	108	12.1	894
90024	<5	**	260	88.7	10	3.4	<5	**	20	6.8	293
90025	<5	**	458	89.3	19	3.7	<5	**	33	6.4	513
90026	<5	**	680	79.9	105	12.3	23	2.7	43	5.1	851
90027	<5	**	384	88.1	34	7.8	6	1.4	12	2.8	436
90028	<5	**	166	83.8	16	8.1	<5	**	14	7.1	198
90029	<5	**	390	86.5	40	8.9	5	1.1	14	3.1	451
90030	<5	**	<5	**	<5	**	<5	**	<5	**	4
90031	<5	**	454	82.1	52	9.4	11	2.0	35	6.3	553
90032	<5	**	504	79.3	67	10.5	20	3.1	44	6.9	636
90033	5	0.6	629	74.5	88	10.4	9	1.1	113	13.4	844
90034	<5	**	678	85.1	53	6.7	10	1.3	56	7.0	797
90035	<5	**	359	81.4	15	3.4	<5	**	66	15.0	441
90036	<5	**	365	79.4	25	5.4	5	1.1	65	14.1	460
90037	<5	**	946	76.2	161	13.0	58	4.7	74	6.0	1,241
90038	<5	**	292	85.4	25	7.3	9	2.6	16	4.7	342
90039	<5	**	261	87.0	21	7.0	<5	**	13	4.3	300
90040	<5	**	149	78.8	23	12.2	5	2.7	10	5.3	189
90041	<5	**	227	89.4	23	9.1	<5	**	<5	**	254
90042	<5	**	730	83.2	105	12.0	24	2.7	17	1.9	877
90043	<5	**	425	76.2	78	14.0	20	3.6	32	5.7	558
90044	8	0.5	1,322	76.9	242	14.1	69	4.0	78	4.5	1,719
90045	<5	**	405	89.0	24	5.3	<5	**	24	5.3	455
90046	<5	**	290	84.3	14	4.1	<5	**	36	10.5	344
90047	<5	**	518	76.4	90	13.3	25	3.7	43	6.3	678
90048	<5	**	221	86.3	<5	**	<5	**	32	12.5	256
90049	<5	**	306	90.8	7	2.1	<5	**	22	6.5	337
90050	<5	**	<5	**	<5	**	<5	**	<5	**	1
90051	<5	**	<5	**	<5	**	<5	**	<5	**	1
90055	<5	**	<5	**	<5	**	<5	**	<5	**	3
90056	<5	**	43	69.4	5	8.1	<5	**	12	19.4	62
90057	<5	**	671	81.6	116	14.1	18	2.2	14	1.7	822
90058	<5	**	59	72.8	16	19.8	<5	**	<5	**	81
90059	<5	**	775	83.3	95	10.2	24	2.6	34	3.7	930
90060	<5	**	<5	**	<5	**	<5	**	<5	**	4
90061	<5	**	401	77.0	81	15.6	13	2.5	23	4.4	521
90062	6	1.2	379	73.0	71	13.7	24	4.6	39	7.5	519
90063	<5	**	767	76.2	101	10.0	18	1.8	118	11.7	1,007
90064	<5	**	227	82.6	14	5.1	<5	**	32	11.6	275

Los Angeles County - Department of Public Health
Entry Into Prenatal Care (PNC) By Zip Code*
 Los Angeles County, 2010

Mother's Residential Zip Code	Mother's Trimester Prenatal Care Began										Total Live Births
	No Prenatal Care		First Trimester		Second Trimester		Third Trimester		Unknown		
	Number	Percent	Number	Percent	Number	Percent	Number	Percent	Number	Percent	
90065	<5	**	517	81.9	80	12.7	21	3.3	11	1.7	631
90066	<5	**	643	89.9	38	5.3	8	1.1	25	3.5	715
90067	<5	**	13	65.0	<5	**	<5	**	5	25.0	20
90068	<5	**	178	90.8	9	4.6	<5	**	9	4.6	196
90069	<5	**	90	76.3	<5	**	<5	**	24	20.3	118
90077	<5	**	66	85.7	<5	**	<5	**	8	10.4	77
90081	<5	**	<5	**	<5	**	<5	**	<5	**	1
90082	<5	**	<5	**	<5	**	<5	**	<5	**	1
90088	<5	**	<5	**	<5	**	<5	**	<5	**	2
90094	<5	**	128	90.1	<5	**	<5	**	10	7.0	142
90096	<5	**	<5	**	<5	**	<5	**	<5	**	1
90201	<5	**	1,495	83.0	168	9.3	46	2.6	91	5.1	1,802
90202	<5	**	16	100.0	<5	**	<5	**	<5	**	16
90210	<5	**	148	81.8	5	2.8	<5	**	27	14.9	181
90211	<5	**	61	78.2	<5	**	<5	**	13	16.7	78
90212	<5	**	76	75.3	5	5.0	<5	**	20	19.8	101
90220	<5	**	705	80.7	112	12.8	26	3.0	29	3.3	874
90221	<5	**	977	83.7	122	10.5	35	3.0	30	2.6	1,168
90222	<5	**	530	80.9	74	11.3	23	3.5	26	4.0	655
90224	<5	**	<5	**	<5	**	<5	**	<5	**	1
90230	<5	**	316	82.9	34	8.9	5	1.3	25	6.6	381
90232	<5	**	152	87.4	16	9.2	<5	**	5	2.9	174
90239	<5	**	<5	**	<5	**	<5	**	<5	**	1
90240	<5	**	254	85.8	25	8.5	12	4.1	5	1.7	296
90241	<5	**	482	85.0	52	9.2	21	3.7	12	2.1	567
90242	<5	**	541	84.5	60	9.4	19	3.0	19	3.0	640
90245	<5	**	166	85.6	16	8.3	<5	**	11	5.7	194
90247	<5	**	593	82.0	94	13.0	22	3.0	12	1.7	723
90248	<5	**	83	81.4	15	14.7	<5	**	<5	**	102
90249	<5	**	277	80.3	51	14.8	12	3.5	5	1.5	345
90250	6	0.4	1,217	78.2	247	15.9	46	3.0	41	2.6	1,557
90251	<5	**	5	83.3	<5	**	<5	**	<5	**	6
90254	<5	**	201	92.6	11	5.1	<5	**	<5	**	217
90255	<5	**	1,079	82.8	130	10.0	31	2.4	59	4.5	1,303
90256	<5	**	<5	**	<5	**	<5	**	<5	**	1
90260	<5	**	372	77.8	76	15.9	20	4.2	7	1.5	478
90261	<5	**	<5	**	<5	**	<5	**	<5	**	2
90262	<5	**	1,123	87.1	120	9.3	34	2.6	9	0.7	1,289
90263	<5	**	<5	**	<5	**	<5	**	<5	**	2
90265	<5	**	102	96.2	<5	**	<5	**	<5	**	106
90266	<5	**	295	94.0	6	1.9	<5	**	11	3.5	314
90270	<5	**	401	84.1	38	8.0	14	2.9	20	4.2	477
90272	<5	**	148	91.4	<5	**	<5	**	10	6.2	162
90274	<5	**	121	94.5	6	4.7	<5	**	<5	**	128
90275	<5	**	225	87.6	19	7.4	<5	**	8	3.1	257
90277	<5	**	342	87.7	33	8.5	7	1.8	7	1.8	390
90278	<5	**	531	88.9	44	7.4	<5	**	17	2.9	597
90280	5	0.3	1,290	84.5	145	9.5	48	3.2	38	2.5	1,526
90290	<5	**	46	92.0	<5	**	<5	**	<5	**	50
90291	<5	**	267	86.7	15	4.9	8	2.6	17	5.5	308
90292	<5	**	257	89.9	10	3.5	<5	**	17	5.9	286
90293	<5	**	133	88.7	5	3.3	<5	**	11	7.3	150
90294	<5	**	<5	**	<5	**	<5	**	<5	**	1
90301	<5	**	430	78.5	76	13.9	22	4.0	19	3.5	548
90302	<5	**	342	79.9	64	15.0	11	2.6	11	2.6	428
90303	<5	**	355	78.0	68	15.0	15	3.3	13	2.9	455
90304	7	1.4	415	81.7	63	12.4	11	2.2	12	2.4	508
90305	<5	**	128	86.5	9	6.1	<5	**	8	5.4	148
90309	<5	**	<5	**	<5	**	<5	**	<5	**	1
90313	<5	**	<5	**	<5	**	<5	**	<5	**	1
90401	<5	**	45	93.8	<5	**	<5	**	<5	**	48
90402	<5	**	85	94.4	<5	**	<5	**	<5	**	90

Los Angeles County - Department of Public Health
Entry Into Prenatal Care (PNC) By Zip Code*
 Los Angeles County, 2010

Mother's Residential Zip Code	Mother's Trimester Prenatal Care Began										Total Live Births
	No Prenatal Care		First Trimester		Second Trimester		Third Trimester		Unknown		
	Number	Percent	Number	Percent	Number	Percent	Number	Percent	Number	Percent	
90403	<5	**	231	88.9	9	3.5	<5	**	18	6.9	260
90404	<5	**	187	85.8	15	6.9	7	3.2	9	4.1	218
90405	<5	**	246	92.8	8	3.0	<5	**	7	2.6	265
90501	<5	**	495	81.7	85	14.0	16	2.6	7	1.2	606
90502	<5	**	174	81.7	33	15.5	5	2.4	<5	**	213
90503	<5	**	413	88.3	39	8.3	6	1.3	8	1.7	468
90504	<5	**	274	85.4	36	11.2	8	2.5	<5	**	321
90505	<5	**	270	82.6	41	12.5	10	3.1	<5	**	327
90507	<5	**	<5	**	<5	**	<5	**	<5	**	1
90508	<5	**	<5	**	<5	**	<5	**	<5	**	1
90509	<5	**	<5	**	<5	**	<5	**	<5	**	1
90510	<5	**	<5	**	<5	**	<5	**	<5	**	1
90601	<5	**	334	86.8	30	7.8	6	1.6	15	3.9	385
90602	<5	**	316	85.6	34	9.2	8	2.2	11	3.0	369
90603	<5	**	169	89.9	12	6.4	<5	**	<5	**	188
90604	<5	**	475	85.9	61	11.0	7	1.3	10	1.8	553
90605	5	0.9	481	83.9	62	10.8	10	1.8	15	2.6	573
90606	<5	**	388	82.9	52	11.1	13	2.8	15	3.2	468
90607	<5	**	<5	**	<5	**	<5	**	<5	**	3
90630	<5	**	18	94.7	<5	**	<5	**	<5	**	19
90631	<5	**	21	87.5	<5	**	<5	**	<5	**	24
90638	<5	**	430	86.5	53	10.7	10	2.0	<5	**	497
90639	<5	**	<5	**	<5	**	<5	**	<5	**	2
90640	<5	**	658	82.5	86	10.8	10	1.3	43	5.4	798
90650	<5	**	1,313	82.8	185	11.7	41	2.6	43	2.7	1,586
90651	<5	**	<5	**	<5	**	<5	**	<5	**	3
90652	<5	**	<5	**	<5	**	<5	**	<5	**	1
90660	<5	**	762	84.5	88	9.8	20	2.2	30	3.3	902
90662	<5	**	<5	**	<5	**	<5	**	<5	**	1
90666	<5	**	<5	**	<5	**	<5	**	<5	**	1
90670	<5	**	148	79.6	24	12.9	6	3.2	6	3.2	186
90701	<5	**	135	83.9	17	10.6	<5	**	<5	**	161
90703	<5	**	322	85.4	28	7.4	10	2.7	16	4.2	377
90704	<5	**	31	67.4	9	19.6	<5	**	6	13.0	46
90706	6	0.5	901	79.0	158	13.9	36	3.2	40	3.5	1,141
90707	<5	**	<5	**	<5	**	<5	**	<5	**	1
90710	<5	**	288	82.5	36	10.3	17	4.9	6	1.7	349
90711	<5	**	<5	**	<5	**	<5	**	<5	**	1
90712	<5	**	298	83.7	30	8.4	10	2.8	17	4.8	356
90713	<5	**	256	84.2	23	7.6	<5	**	23	7.6	304
90715	<5	**	238	86.2	20	7.3	8	2.9	9	3.3	276
90716	<5	**	173	74.9	48	20.8	7	3.0	<5	**	231
90717	<5	**	216	84.1	32	12.5	6	2.3	<5	**	257
90723	<5	**	787	82.4	119	12.5	17	1.8	29	3.0	955
90731	8	1.0	632	77.4	130	15.9	29	3.6	18	2.2	817
90732	<5	**	182	86.7	20	9.5	<5	**	<5	**	210
90734	<5	**	<5	**	<5	**	<5	**	<5	**	1
90744	<5	**	777	78.6	142	14.4	37	3.7	28	2.8	988
90745	<5	**	500	76.2	110	16.8	28	4.3	16	2.4	656
90746	<5	**	222	79.3	37	13.2	8	2.9	12	4.3	280
90748	<5	**	<5	**	<5	**	<5	**	<5	**	1
90755	<5	**	127	76.1	24	14.4	5	3.0	11	6.6	167
90801	<5	**	7	100.0	<5	**	<5	**	<5	**	7
90802	<5	**	388	76.7	58	11.5	24	4.7	35	6.9	506
90803	<5	**	197	88.3	11	4.9	<5	**	13	5.8	223
90804	5	0.8	487	78.4	81	13.0	12	1.9	36	5.8	621
90805	5	0.3	1,285	77.6	211	12.8	56	3.4	98	5.9	1,655
90806	5	0.7	581	75.9	83	10.8	31	4.1	66	8.6	766
90807	<5	**	316	83.8	19	5.0	7	1.9	35	9.3	377
90808	<5	**	379	88.8	25	5.9	<5	**	21	4.9	427
90809	<5	**	<5	**	<5	**	<5	**	<5	**	1

Los Angeles County - Department of Public Health
Entry Into Prenatal Care (PNC) By Zip Code*
 Los Angeles County, 2010

Mother's Residential Zip Code	Mother's Trimester Prenatal Care Began										Total Live Births
	No Prenatal Care		First Trimester		Second Trimester		Third Trimester		Unknown		
	Number	Percent	Number	Percent	Number	Percent	Number	Percent	Number	Percent	
90810	<5	**	448	78.2	72	12.6	16	2.8	36	6.3	573
90813	6	0.5	955	77.1	168	13.6	44	3.6	65	5.3	1,238
90814	<5	**	182	84.3	19	8.8	5	2.3	10	4.6	216
90815	<5	**	296	85.6	27	7.8	6	1.7	17	4.9	346
91001	<5	**	353	86.7	44	10.8	5	1.2	<5	**	407
91006	<5	**	224	82.4	29	10.7	7	2.6	11	4.0	272
91007	<5	**	254	84.1	27	8.9	9	3.0	12	4.0	302
91008	<5	**	<5	**	<5	**	<5	**	<5	**	3
91010	<5	**	278	83.7	33	9.9	6	1.8	12	3.6	332
91011	<5	**	98	93.3	6	5.7	<5	**	<5	**	105
91016	<5	**	454	86.8	46	8.8	10	1.9	10	1.9	523
91020	<5	**	64	95.5	<5	**	<5	**	<5	**	67
91021	<5	**	<5	**	<5	**	<5	**	<5	**	1
91024	<5	**	72	91.1	<5	**	<5	**	<5	**	79
91025	<5	**	<5	**	<5	**	<5	**	<5	**	1
91030	<5	**	213	93.0	12	5.2	<5	**	<5	**	229
91040	<5	**	166	90.7	12	6.6	<5	**	<5	**	183
91041	<5	**	<5	**	<5	**	<5	**	<5	**	1
91042	<5	**	264	87.1	33	10.9	<5	**	<5	**	303
91062	<5	**	<5	**	<5	**	<5	**	<5	**	1
91077	<5	**	<5	**	<5	**	<5	**	<5	**	1
91101	<5	**	305	90.8	24	7.1	<5	**	<5	**	336
91103	<5	**	332	85.1	42	10.8	8	2.1	7	1.8	390
91104	<5	**	446	85.4	55	10.5	14	2.7	5	1.0	522
91105	<5	**	125	95.4	<5	**	<5	**	<5	**	131
91106	<5	**	308	90.9	22	6.5	6	1.8	<5	**	339
91107	<5	**	355	90.8	30	7.7	<5	**	<5	**	391
91108	<5	**	75	92.6	<5	**	<5	**	<5	**	81
91125	<5	**	<5	**	<5	**	<5	**	<5	**	4
91126	<5	**	<5	**	<5	**	<5	**	<5	**	1
91201	<5	**	214	90.7	18	7.6	<5	**	<5	**	236
91202	<5	**	189	88.3	16	7.5	6	2.8	<5	**	214
91203	<5	**	118	84.3	18	12.9	<5	**	<5	**	140
91204	<5	**	141	82.5	24	14.0	<5	**	<5	**	171
91205	<5	**	333	88.3	37	9.8	6	1.6	<5	**	377
91206	<5	**	301	89.6	26	7.7	5	1.5	<5	**	336
91207	<5	**	82	92.1	6	6.7	<5	**	<5	**	89
91208	<5	**	124	92.5	5	3.7	<5	**	<5	**	134
91210	<5	**	<5	**	<5	**	<5	**	<5	**	3
91214	<5	**	200	96.6	7	3.4	<5	**	<5	**	207
91301	<5	**	161	92.5	6	3.5	<5	**	<5	**	174
91302	<5	**	158	93.5	5	3.0	<5	**	<5	**	169
91303	<5	**	406	91.0	28	6.3	9	2.0	<5	**	446
91304	<5	**	584	92.6	41	6.5	5	0.8	<5	**	631
91305	<5	**	<5	**	<5	**	<5	**	<5	**	3
91306	<5	**	555	88.5	64	10.2	6	1.0	<5	**	627
91307	<5	**	183	92.4	7	3.5	<5	**	<5	**	198
91309	<5	**	<5	**	<5	**	<5	**	<5	**	1
91311	<5	**	260	86.1	28	9.3	5	1.7	8	2.7	302
91316	<5	**	271	91.3	15	5.1	<5	**	8	2.7	297
91320	<5	**	<5	**	<5	**	<5	**	<5	**	1
91321	<5	**	416	84.4	60	12.2	7	1.4	9	1.8	493
91322	<5	**	<5	**	<5	**	<5	**	<5	**	1
91323	<5	**	<5	**	<5	**	<5	**	<5	**	1
91324	<5	**	263	92.6	11	3.9	5	1.8	<5	**	284
91325	<5	**	326	91.6	21	5.9	<5	**	6	1.7	356
91326	<5	**	285	96.6	8	2.7	<5	**	<5	**	295
91328	<5	**	<5	**	<5	**	<5	**	<5	**	1
91331	6	0.3	1,546	85.8	191	10.6	47	2.6	13	0.7	1,803
91334	<5	**	<5	**	<5	**	<5	**	<5	**	1

Los Angeles County - Department of Public Health
Entry Into Prenatal Care (PNC) By Zip Code*
 Los Angeles County, 2010

Mother's Residential Zip Code	Mother's Trimester Prenatal Care Began										Total Live Births
	No Prenatal Care		First Trimester		Second Trimester		Third Trimester		Unknown		
	Number	Percent	Number	Percent	Number	Percent	Number	Percent	Number	Percent	
91335	<5	**	856	88.6	79	8.2	16	1.7	12	1.2	966
91340	<5	**	499	85.2	68	11.6	11	1.9	7	1.2	586
91341	<5	**	<5	**	<5	**	<5	**	<5	**	1
91342	5	0.4	1,163	84.5	161	11.7	31	2.3	17	1.2	1,377
91343	<5	**	780	88.3	80	9.1	14	1.6	8	0.9	883
91344	<5	**	440	88.9	42	8.5	9	1.8	<5	**	495
91345	<5	**	189	86.7	24	11.0	<5	**	<5	**	218
91346	<5	**	<5	**	<5	**	<5	**	<5	**	1
91350	<5	**	369	90.9	25	6.2	8	2.0	<5	**	406
91351	<5	**	380	88.8	35	8.2	8	1.9	<5	**	428
91352	<5	**	646	86.4	77	10.3	18	2.4	<5	**	748
91353	<5	**	<5	**	<5	**	<5	**	<5	**	2
91354	<5	**	309	92.0	20	6.0	<5	**	<5	**	336
91355	<5	**	298	90.6	23	7.0	6	1.8	<5	**	329
91356	<5	**	289	92.9	13	4.2	<5	**	9	2.9	311
91357	<5	**	<5	**	<5	**	<5	**	<5	**	2
91361	<5	**	22	100.0	<5	**	<5	**	<5	**	22
91362	<5	**	7	100.0	<5	**	<5	**	<5	**	7
91364	<5	**	219	90.5	10	4.1	<5	**	11	4.6	242
91365	<5	**	<5	**	<5	**	<5	**	<5	**	1
91366	<5	**	<5	**	<5	**	<5	**	<5	**	1
91367	<5	**	394	92.3	15	3.5	8	1.9	10	2.3	427
91380	<5	**	<5	**	<5	**	<5	**	<5	**	1
91381	<5	**	170	88.1	20	10.4	<5	**	<5	**	193
91384	<5	**	223	89.2	23	9.2	<5	**	<5	**	250
91385	<5	**	<5	**	<5	**	<5	**	<5	**	1
91387	<5	**	489	86.7	59	10.5	8	1.4	6	1.1	564
91390	<5	**	160	91.4	10	5.7	<5	**	<5	**	175
91393	<5	**	<5	**	<5	**	<5	**	<5	**	1
91395	<5	**	<5	**	<5	**	<5	**	<5	**	1
91400	<5	**	<5	**	<5	**	<5	**	<5	**	1
91401	<5	**	455	88.7	38	7.4	5	1.0	15	2.9	513
91402	<5	**	1,014	86.5	120	10.2	26	2.2	9	0.8	1,173
91403	<5	**	290	91.2	11	3.5	<5	**	15	4.7	318
91404	<5	**	<5	**	<5	**	<5	**	<5	**	1
91405	<5	**	672	90.1	58	7.8	9	1.2	6	0.8	746
91406	<5	**	727	90.9	52	6.5	7	0.9	10	1.3	800
91408	<5	**	<5	**	<5	**	<5	**	<5	**	1
91409	<5	**	<5	**	<5	**	<5	**	<5	**	1
91411	<5	**	356	91.5	21	5.4	<5	**	9	2.3	389
91413	<5	**	<5	**	<5	**	<5	**	<5	**	1
91423	<5	**	333	90.5	12	3.3	<5	**	22	6.0	368
91436	<5	**	131	89.1	<5	**	<5	**	12	8.2	147
91501	<5	**	198	91.7	14	6.5	<5	**	<5	**	216
91502	<5	**	114	95.0	5	4.2	<5	**	<5	**	120
91503	<5	**	<5	**	<5	**	<5	**	<5	**	1
91504	<5	**	255	92.1	20	7.2	<5	**	<5	**	277
91505	<5	**	290	93.0	13	4.2	<5	**	8	2.6	312
91506	<5	**	179	93.7	9	4.7	<5	**	<5	**	191
91507	<5	**	<5	**	<5	**	<5	**	<5	**	2
91601	<5	**	410	89.7	28	6.1	10	2.2	9	2.0	457
91602	<5	**	162	86.6	8	4.3	<5	**	14	7.5	187
91603	<5	**	<5	**	<5	**	<5	**	<5	**	1
91604	<5	**	298	90.0	8	2.4	<5	**	23	7.0	331
91605	<5	**	735	88.6	65	7.8	20	2.4	8	1.0	830
91606	<5	**	520	90.4	41	7.1	8	1.4	5	0.9	575
91607	<5	**	269	88.8	14	4.6	<5	**	17	5.6	303
91609	<5	**	<5	**	<5	**	<5	**	<5	**	1
91702	<5	**	718	81.8	98	11.2	22	2.5	36	4.1	878
91706	<5	**	1,064	87.9	89	7.4	20	1.7	34	2.8	1,210
91711	<5	**	233	89.6	20	7.7	<5	**	<5	**	260
91722	<5	**	414	87.0	40	8.4	7	1.5	13	2.7	476
91723	<5	**	186	85.7	18	8.3	<5	**	8	3.7	217

Los Angeles County - Department of Public Health
Entry Into Prenatal Care (PNC) By Zip Code*
 Los Angeles County, 2010

Mother's Residential Zip Code	Mother's Trimester Prenatal Care Began										Total Live Births
	No Prenatal Care		First Trimester		Second Trimester		Third Trimester		Unknown		
	Number	Percent	Number	Percent	Number	Percent	Number	Percent	Number	Percent	
91724	<5	**	223	86.1	28	10.8	6	2.3	<5	**	259
91731	<5	**	326	76.7	60	14.1	10	2.4	28	6.6	425
91732	<5	**	843	82.3	111	10.8	22	2.2	46	4.5	1,024
91733	<5	**	625	83.3	68	9.1	15	2.0	38	5.1	750
91740	<5	**	230	89.8	16	6.3	<5	**	5	2.0	256
91741	<5	**	184	91.1	17	8.4	<5	**	<5	**	202
91744	<5	**	1,239	85.7	144	10.0	26	1.8	34	2.4	1,446
91745	<5	**	501	84.9	43	7.3	19	3.2	27	4.6	590
91746	<5	**	377	87.3	38	8.8	6	1.4	10	2.3	432
91747	<5	**	<5	**	<5	**	<5	**	<5	**	3
91748	<5	**	646	73.0	55	6.2	83	9.4	101	11.4	885
91749	<5	**	<5	**	<5	**	<5	**	<5	**	1
91750	<5	**	246	86.0	32	11.2	<5	**	6	2.1	286
91754	<5	**	298	80.1	35	9.4	11	3.0	26	7.0	372
91755	<5	**	237	76.7	25	8.1	12	3.9	35	11.3	309
91759	<5	**	<5	**	<5	**	<5	**	<5	**	2
91761	<5	**	<5	**	<5	**	<5	**	<5	**	1
91763	<5	**	<5	**	<5	**	<5	**	<5	**	1
91765	<5	**	347	86.3	29	7.2	10	2.5	15	3.7	402
91766	5	0.4	1,080	86.3	116	9.3	11	0.9	39	3.1	1,251
91767	<5	**	722	85.3	80	9.5	14	1.7	28	3.3	846
91768	<5	**	478	82.7	62	10.7	16	2.8	22	3.8	578
91769	<5	**	<5	**	<5	**	<5	**	<5	**	1
91770	<5	**	585	78.3	82	11.0	22	3.0	58	7.8	747
91771	<5	**	<5	**	<5	**	<5	**	<5	**	2
91773	<5	**	235	84.2	25	9.0	7	2.5	12	4.3	279
91775	<5	**	259	81.7	29	9.2	10	3.2	19	6.0	317
91776	<5	**	356	83.6	41	9.6	7	1.6	22	5.2	426
91780	<5	**	273	87.2	26	8.3	7	2.2	6	1.9	313
91788	<5	**	<5	**	<5	**	<5	**	<5	**	1
91789	<5	**	265	85.2	23	7.4	8	2.6	14	4.5	311
91790	<5	**	484	84.2	55	9.6	8	1.4	26	4.5	575
91791	<5	**	289	85.3	30	8.9	<5	**	16	4.7	339
91792	<5	**	324	88.5	22	6.0	7	1.9	11	3.0	366
91793	<5	**	<5	**	<5	**	<5	**	<5	**	1
91801	<5	**	466	85.0	55	10.0	7	1.3	20	3.7	548
91802	<5	**	<5	**	<5	**	<5	**	<5	**	4
91803	<5	**	297	86.8	24	7.0	5	1.5	14	4.1	342
91805	<5	**	<5	**	<5	**	<5	**	<5	**	1
92009	<5	**	<5	**	<5	**	<5	**	<5	**	1
92397	<5	**	<5	**	<5	**	<5	**	<5	**	1
92651	<5	**	<5	**	<5	**	<5	**	<5	**	1
93033	<5	**	<5	**	<5	**	<5	**	<5	**	1
93510	<5	**	34	75.6	10	22.2	<5	**	<5	**	45
93532	<5	**	19	79.2	5	20.8	<5	**	<5	**	24
93534	<5	**	467	62.5	234	31.3	37	5.0	5	0.7	747
93535	6	0.5	849	65.1	387	29.7	55	4.2	8	0.6	1,305
93536	5	0.6	626	74.8	179	21.4	27	3.2	<5	**	837
93539	<5	**	<5	**	<5	**	<5	**	<5	**	3
93543	<5	**	110	61.8	57	32.0	10	5.6	<5	**	178
93544	<5	**	<5	**	<5	**	<5	**	<5	**	9
93550	16	1.2	856	63.3	404	29.9	72	5.3	<5	**	1,352
93551	5	0.9	430	79.8	87	16.1	15	2.8	<5	**	539
93552	<5	**	375	70.0	132	24.6	23	4.3	<5	**	536
93553	<5	**	9	60.0	5	33.3	<5	**	<5	**	15
93590	<5	**	<5	**	<5	**	<5	**	<5	**	1
93591	<5	**	68	63.0	33	30.6	6	5.6	<5	**	108
93599	<5	**	<5	**	<5	**	<5	**	<5	**	1
94945	<5	**	<5	**	<5	**	<5	**	<5	**	1
Total	394		110,516		14,022		3,132		5,096		133,160

Note: "Trimester Prenatal Care Began" excludes the prenatal care experiences of all women whose pregnancies did not result in a live birth.

** Results not calculated if less than 5 cases

Source: California Department of Public Health, Center for Health Statistics, OHIR Vital Statistics Section, 2010