

# **Infant Mortality**

**TITLE V INDICATOR TEMPLATE**

**INDICATOR:** Infant Mortality Rate

**DEFINITION:** The number of infant deaths occurring at less than 365 days of age per 1,000 live births

**NUMERATOR:** The number of infant deaths occurring at less than 365 days of age, by place of residence, in a calendar year

**DENOMINATOR:** The total number of live births, by place of residence, in a calendar year

**HEALTHY PEOPLE 2010 OBJECTIVE:**

Reduce the infant mortality rate to no more than 4.5 per 1,000 live births.  
(Baseline: 7.2 per 1,000 live births in 1998) (Objective 16-1c)

**HEALTHY PEOPLE 2020 OBJECTIVE:**

Reduce the infant mortality rate to no more than 6.0 per 1,000 live births.  
(Baseline: 6.7 per 1,000 live births in 2006) (Objective MICH-1.3)

**RISK FACTORS:**

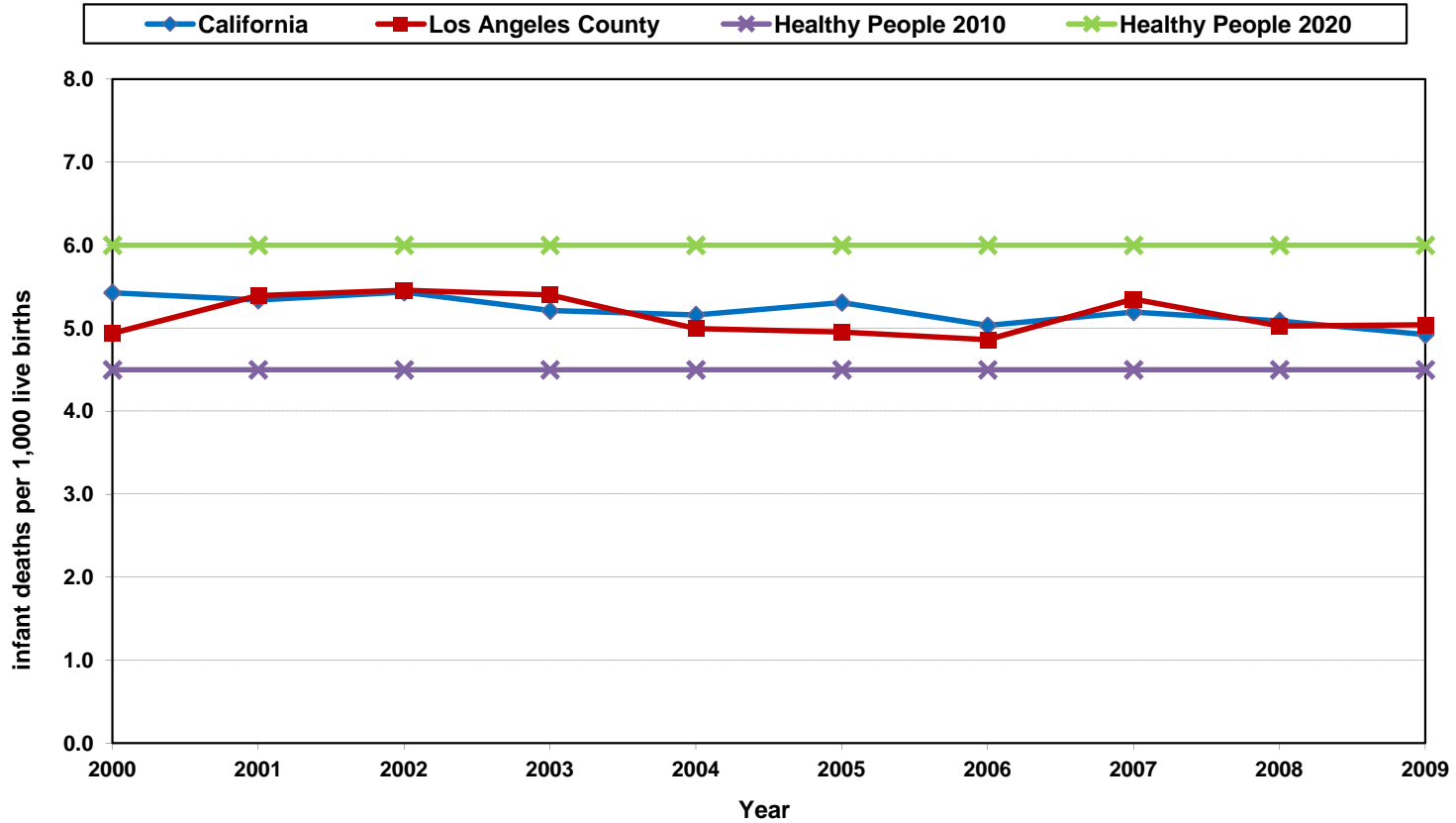
Race/ethnicity; prematurity/disorders related to short gestation; low birth weight; congenital anomalies; young maternal age; lowmaternal education level; maternal tobacco use; maternal alcohol or substance use/abuse; poor maternal nutrition; inadequate prenatal care; unintended pregnancy; maternal psychosocial problems; maternal medical complications/chronic illness during pregnancy (including diabetes); pregnancy complications; short interpregnancy interval; injury (including domestic violence); infection; respiratory distress syndrome; family history of SIDS

Year	California				Los Angeles County			
	Infant Mortality		95% Confidence Interval		Infant Mortality		95% Confidence Interval	
	Deaths	Rate	Lower	Upper	Deaths	Rate	Lower	Upper
2000	2,884	5.4	5.2	5.6	777	4.9	4.6	5.3
2001	2,815	5.3	5.1	5.5	828	5.4	5.0	5.8
2002	2,875	5.4	5.2	5.6	825	5.5	5.1	5.8
2003	2,819	5.2	5.0	5.4	822	5.4	5.0	5.8
2004	2,811	5.2	5.0	5.4	757	5.0	4.6	5.4
2005	2,913	5.3	5.1	5.5	745	5.0	4.6	5.3
2006	2,829	5.0	4.8	5.2	738	4.9	4.5	5.2
2007	2,941	5.2	5.0	5.4	812	5.3	5.0	5.7
2008	2,806	5.1	4.9	5.3	742	5.0	4.7	5.4
2009	2,593	4.9	4.7	5.1	704	5.0	4.7	5.4

Denominator: Live Births		
Year	California	LA County
2000	531,285	157,391
2001	527,371	153,523
2002	529,245	151,167
2003	540,827	152,192
2004	544,685	151,504
2005	548,700	150,377
2006	562,157	151,837
2007	566,137	151,813
2008	551,567	147,684
2009	526,774	139,679

Source: California Department of Public Health, Center for Health Statistics, OHIR Vital Statistics Section, 2000-2009

### Infant Deaths per 1,000 Live Births California vs. Los Angeles County, 2000-2009

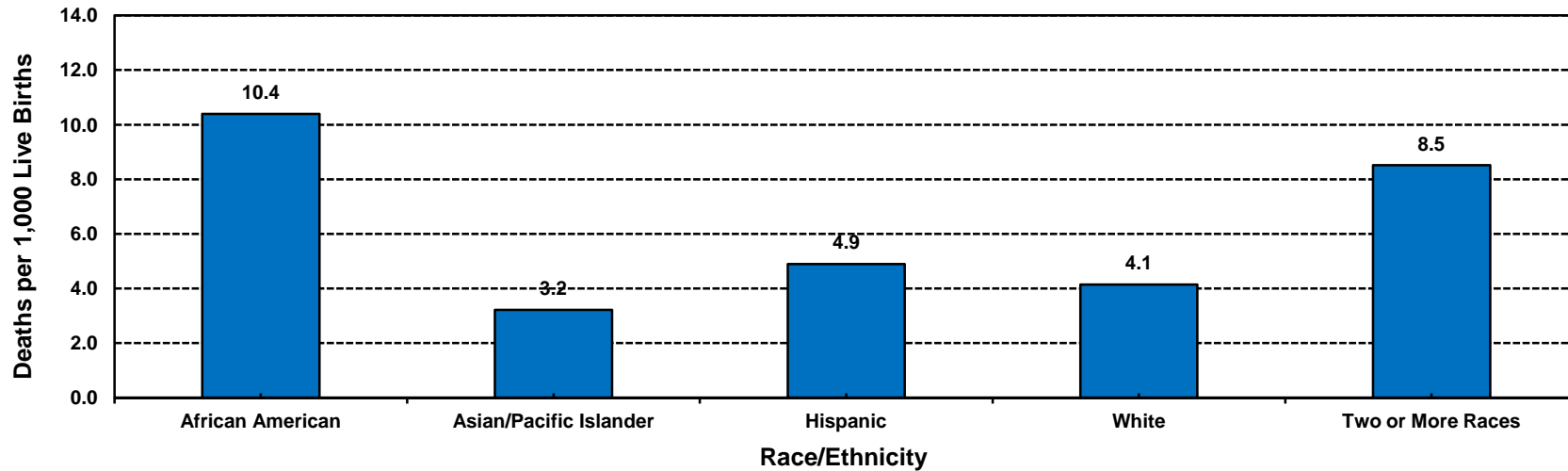


Year 2010 Objective: Reduce the infant mortality rate to no more than 4.5 per 1,000 live births.

Year 2020 Objective: Reduce the infant mortality rate to no more than 6.0 per 1,000 live births.

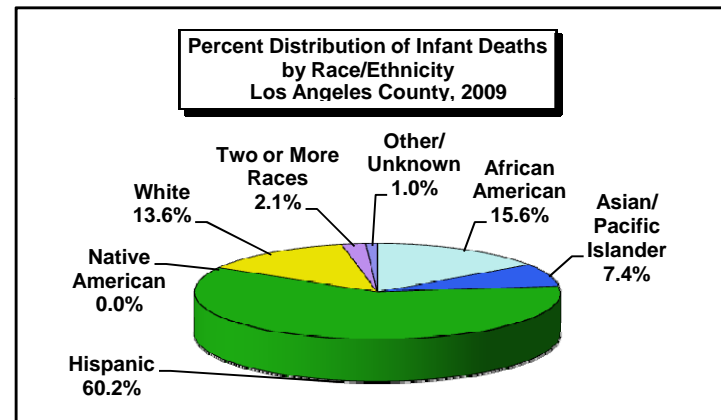
Source: California Department of Public Health, Center for Health Statistics, OHIR Vital Statistics Section, 2000-2009

### Infant Mortality Rate by Race/Ethnicity Los Angeles County, 2009



Los Angeles County, 2009				
Race/Ethnicity	Infant Mortality		95% Confidence Interval	
	Deaths	Rate	Lower	Upper
African American	110	10.4	8.5	12.3
Asian/Pacific Islander	52	3.2	2.3	4.1
Hispanic	424	4.9	4.4	5.4
Native American	<5	N/C	N/C	N/C
White	96	4.1	3.3	5.0
Two or More Races	15	8.5	4.2	12.8
Other/Unknown	7	6.1	1.6	10.5
<b>Total</b>	<b>704</b>	<b>5.0</b>	<b>4.7</b>	<b>5.4</b>

Total Live Births
10,589
16,179
86,642
202
23,150
1,762
1,155
<b>139,679</b>



Year 2010 Objective: Reduce the infant mortality rate to no more than 4.5 per 1,000 live births.

Year 2020 Objective: Reduce the infant mortality rate to no more than 6.0 per 1,000 live births.

Note: Infant mortality rate is defined as infant deaths occurring less than 365 days per 1,000 live births.

Racial/ethnic categorization has been revised in this report; data from previous year reports may not be comparable.

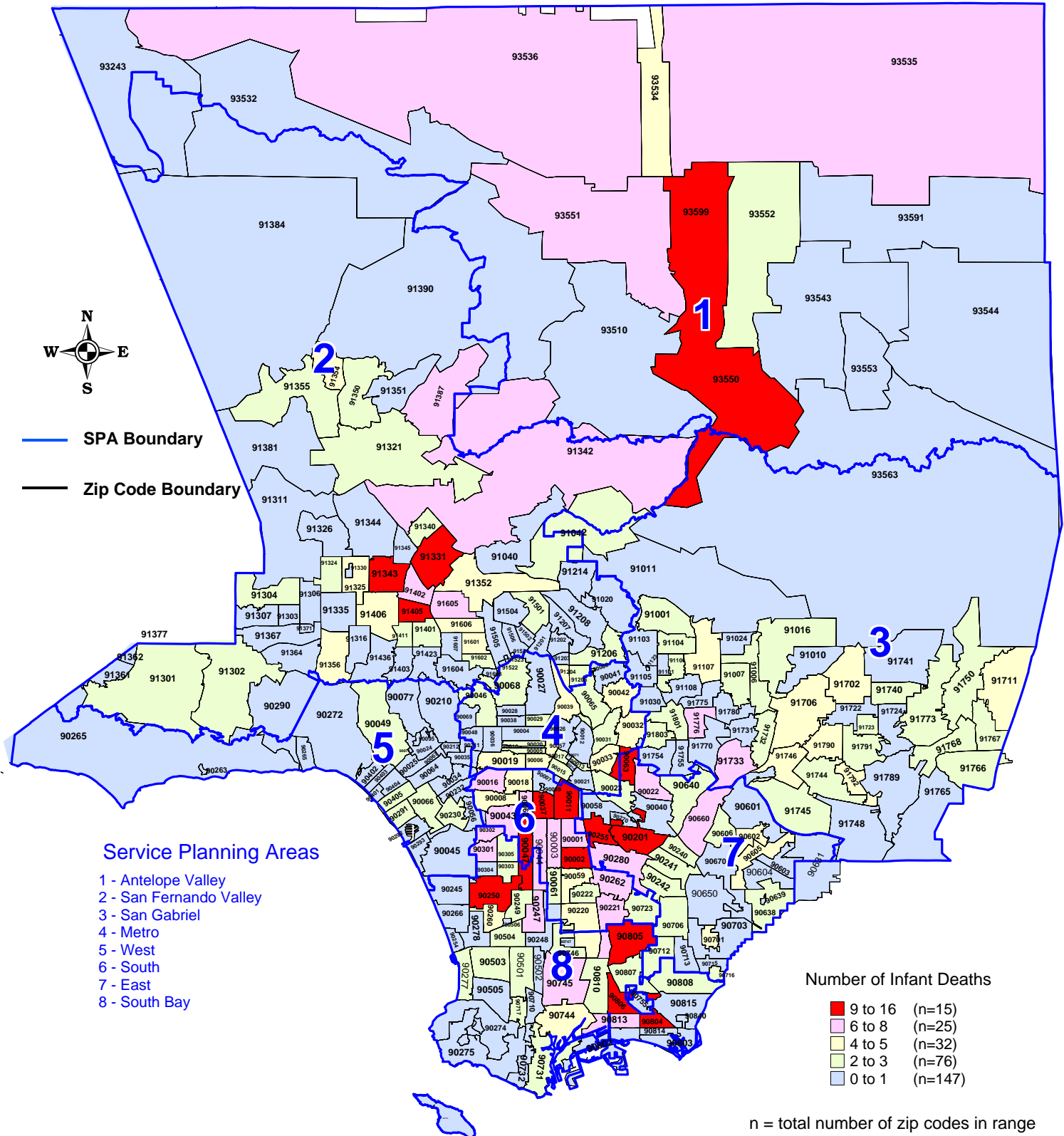
African American, Asian/Pacific Islander, Native American, White and other races exclude Hispanic ethnicity. Hispanic includes any race category.

Numbers fewer than 5 are shown as "<5". Rates are not calculated (N/C) if number is fewer than five.

Source: California Department of Public Health, Center for Health Statistics, OHIR Vital Statistics Section, 2009

# Number of Infant Deaths by Zip Code\* and Service Planning Area (SPA)

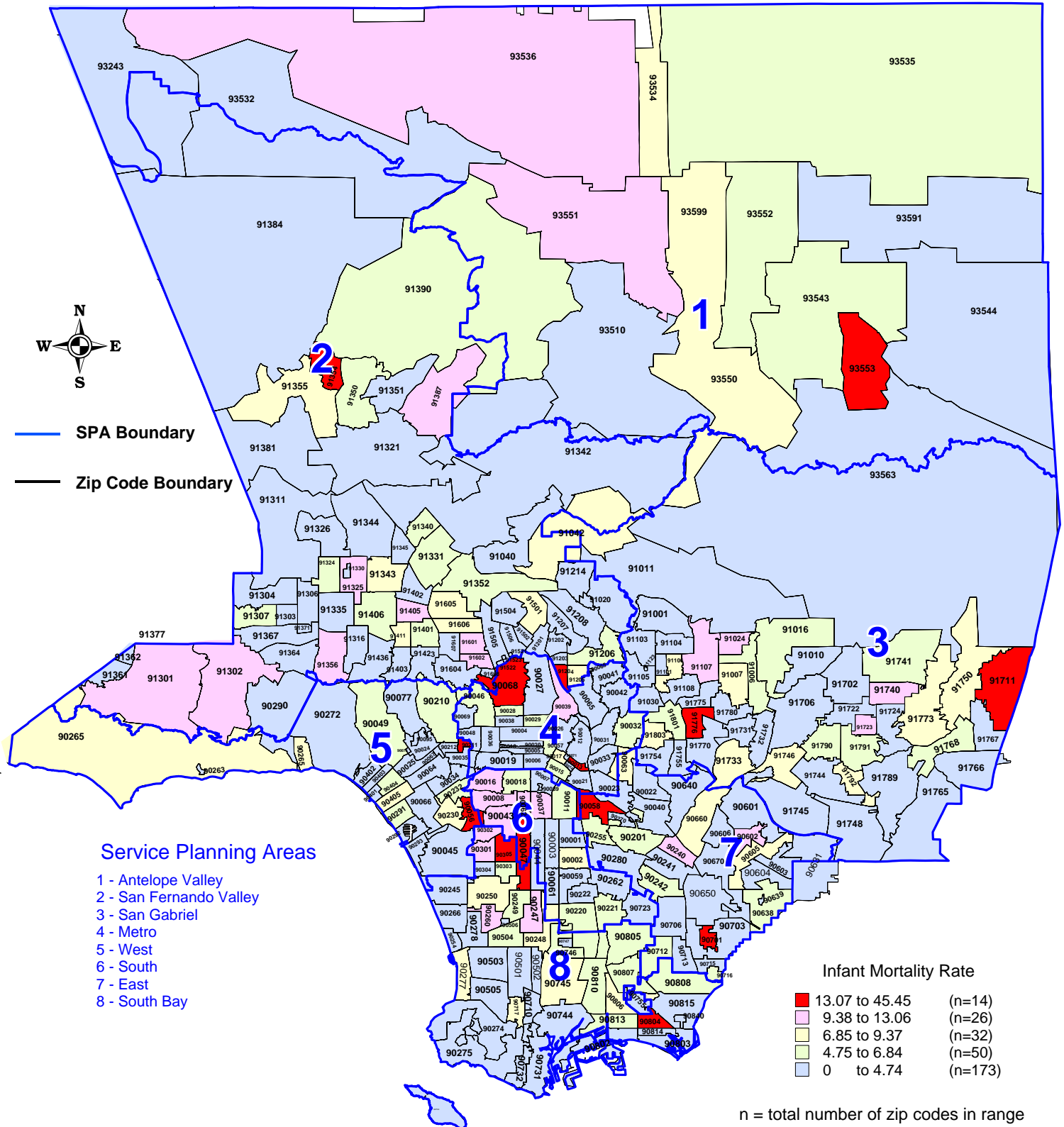
Los Angeles County, 2009



\*Los Angeles County zip code boundaries as of April 2007  
 Total number of live births in Los Angeles County, 2009 = 139,679  
 Total number of infant deaths in Los Angeles County, 2009 = 704  
 Note : Infant death is defined as deaths occurring less than 365 days of age.  
 Source : California Department of Public Health, Center for Health Statistics, OHIR Vital Statistics Section, 2009.

# Infant Mortality Rate by Zip Code\* and Service Planning Area (SPA)

Los Angeles County, 2009



\*Los Angeles County zip code boundaries as of April 2007  
 Total number of live births in Los Angeles County, 2009 = 139,679  
 Infant mortality rate per 1,000 live births in Los Angeles County, 2009 = 5.0

Year 2010 Objective: Reduce the infant mortality rate to no more than 4.5 per 1,000 live births.  
 Year 2020 Objective: Reduce the infant mortality rate to no more than 6.0 per 1,000 live births.

Note: Infant mortality rate is defined as infant deaths occurring less than 365 days per 1,000 live births.

Source : California Department of Public Health, Center for Health Statistics, OHIR Vital Statistics Section, 2009.

**TITLE V INDICATOR TEMPLATE**

**INDICATOR:** Neonatal Mortality Rate

**DEFINITION:** The number of infant deaths occurring at less than 28 days of age per 1,000 live births

**NUMERATOR:** The number of infant deaths occurring at less than 28 days of age, by place of residence, in a calendar year

**DENOMINATOR:** The total number of live births, by place of residence, in a calendar year

**HEALTHY PEOPLE 2010 OBJECTIVE:**

Reduce the neonatal mortality rate to no more than 2.9 per 1,000 live births.  
(Baseline: 4.8 per 1,000 live births in 1998) (Objective 16-1d)

**HEALTHY PEOPLE 2020 OBJECTIVE:**

Reduce the neonatal mortality rate to no more than 4.1 per 1,000 live births.  
(Baseline: 4.5 per 1,000 live births in 2006) (Objective MICH-1.4)

**RISK FACTORS:**

Congenital anomalies; respiratory distress syndrome; short gestation; low birth weight; maternal complications; race/ethnicity (African American, Puerto Rican)

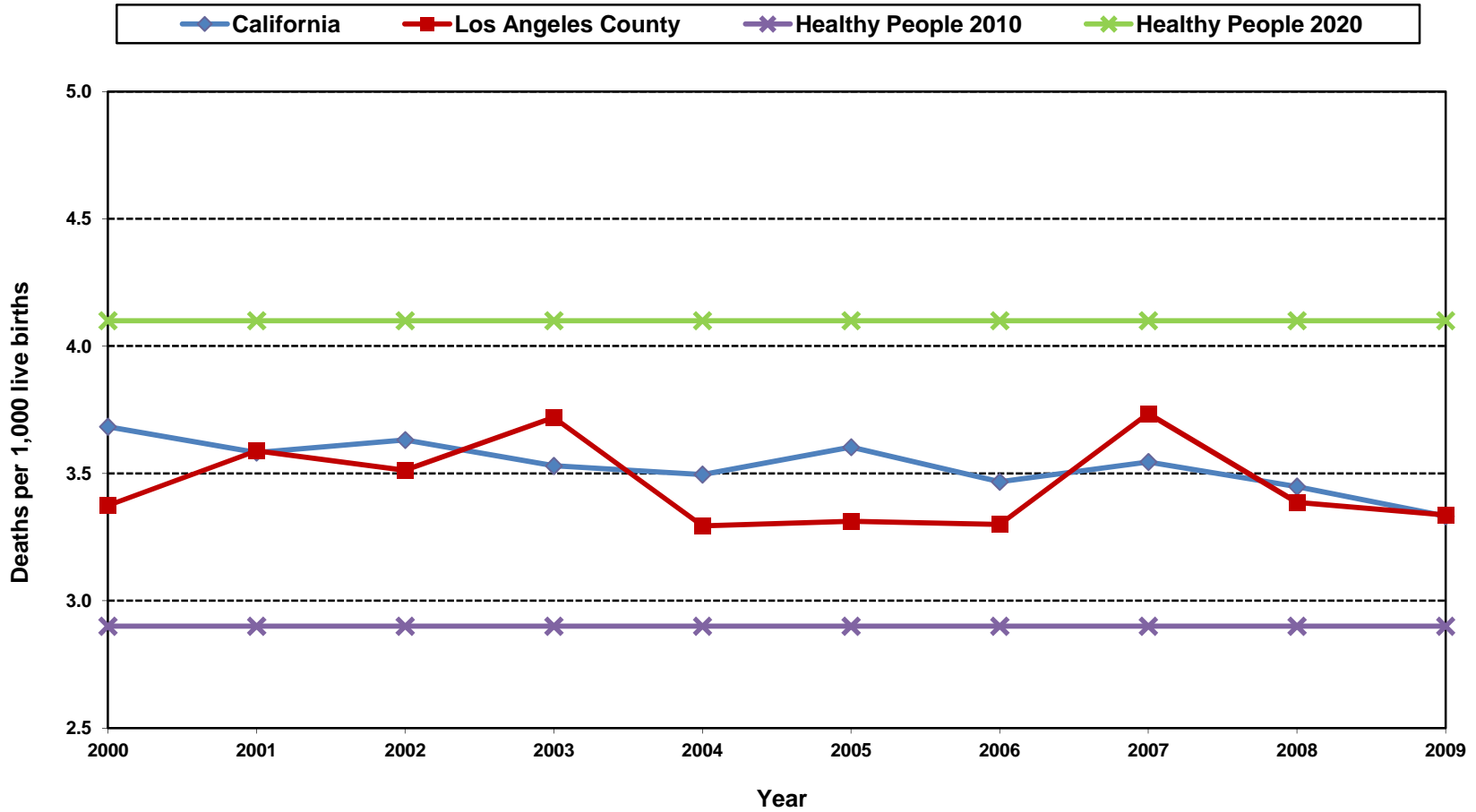
See also risk factors for infant mortality.

Year	California				Los Angeles County			
	Neonatal Mortality		95% Confidence Interval		Neonatal Mortality		95% Confidence Interval	
	Deaths	Rate	Lower	Upper	Deaths	Rate	Lower	Upper
2000	1,957	3.7	3.5	3.8	531	3.4	3.1	3.7
2001	1,889	3.6	3.4	3.7	551	3.6	3.3	3.9
2002	1,922	3.6	3.5	3.8	531	3.5	3.2	3.8
2003	1,909	3.5	3.4	3.7	566	3.7	3.4	4.0
2004	1,904	3.5	3.3	3.7	499	3.3	3.0	3.6
2005	1,977	3.6	3.4	3.8	498	3.3	3.0	3.6
2006	1,949	3.5	3.3	3.6	501	3.3	3.0	3.6
2007	2,007	3.5	3.4	3.7	567	3.7	3.4	4.0
2008	1,902	3.4	3.3	3.6	500	3.4	3.1	3.7
2009	1,755	3.3	3.2	3.5	466	3.3	3.0	3.6

Year	Denominator: Live Births	
	California	LA County
2000	531,285	157,391
2001	527,371	153,523
2002	529,245	151,167
2003	540,827	152,192
2004	544,685	151,504
2005	548,700	150,377
2006	562,157	151,837
2007	566,137	151,813
2008	551,567	147,684
2009	526,774	139,679

Source: California Department of Public Health, Center for Health Statistics, OHIR Vital Statistics Section, 2000-2009

### Neonatal Deaths per 1,000 Live Births California vs. Los Angeles County, 2000-2009



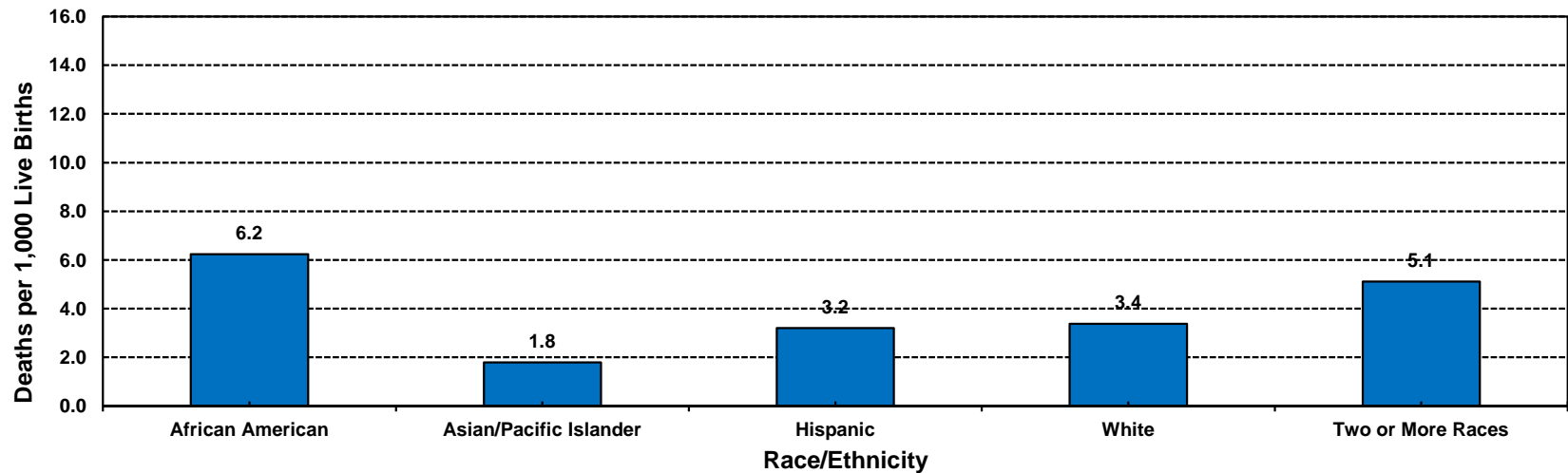
Year 2010 Objective: Reduce the neonatal mortality rate to no more than 2.9 per 1,000 live births.

Year 2020 Objective: Reduce neonatal deaths to no more than 4.1 per 1,000 live births.

Source: California Department of Public Health, Center for Health Statistics, OHIR Vital Statistics Section, 2000-2009

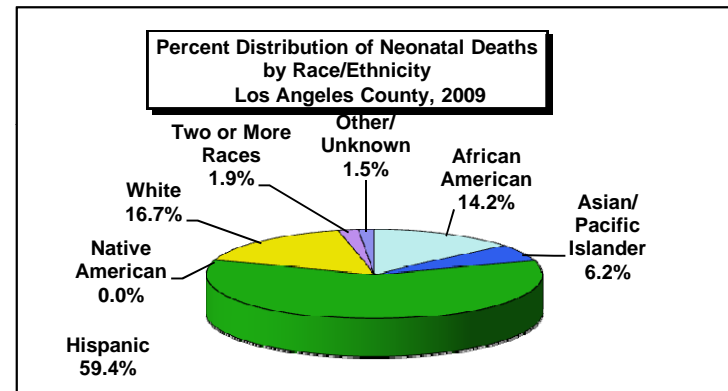


### Neonatal Mortality Rate by Race/Ethnicity Los Angeles County, 2009



Los Angeles County, 2009				
Race/Ethnicity	Neonatal Mortality		95% Confidence Interval	
	Deaths	Rate	Lower	Upper
African American	66	6.2	4.7	7.7
Asian/Pacific Islander	29	1.8	1.1	2.4
Hispanic	277	3.2	2.8	3.6
Native American	<5	N/C	N/C	N/C
White	78	3.4	2.6	4.1
Two or More Races	9	5.1	1.8	8.4
Other/Unknown	7	6.1	1.6	10.5
<b>Total</b>	<b>466</b>	<b>3.3</b>	<b>3.0</b>	<b>3.6</b>

Total Live Births
10,589
16,179
86,642
202
23,150
1,762
1,155
<b>139,679</b>



Year 2010 Objective: Reduce the neonatal mortality rate to no more than 2.9 per 1,000 live births.

Year 2020 Objective: Reduce neonatal deaths to no more than 4.1 per 1,000 live births.

Note: Neonatal mortality rate is defined as infant deaths occurring less than 28 days per 1,000 live births.

Racial/ethnic categorization has been revised in this report; data from previous year reports may not be comparable.

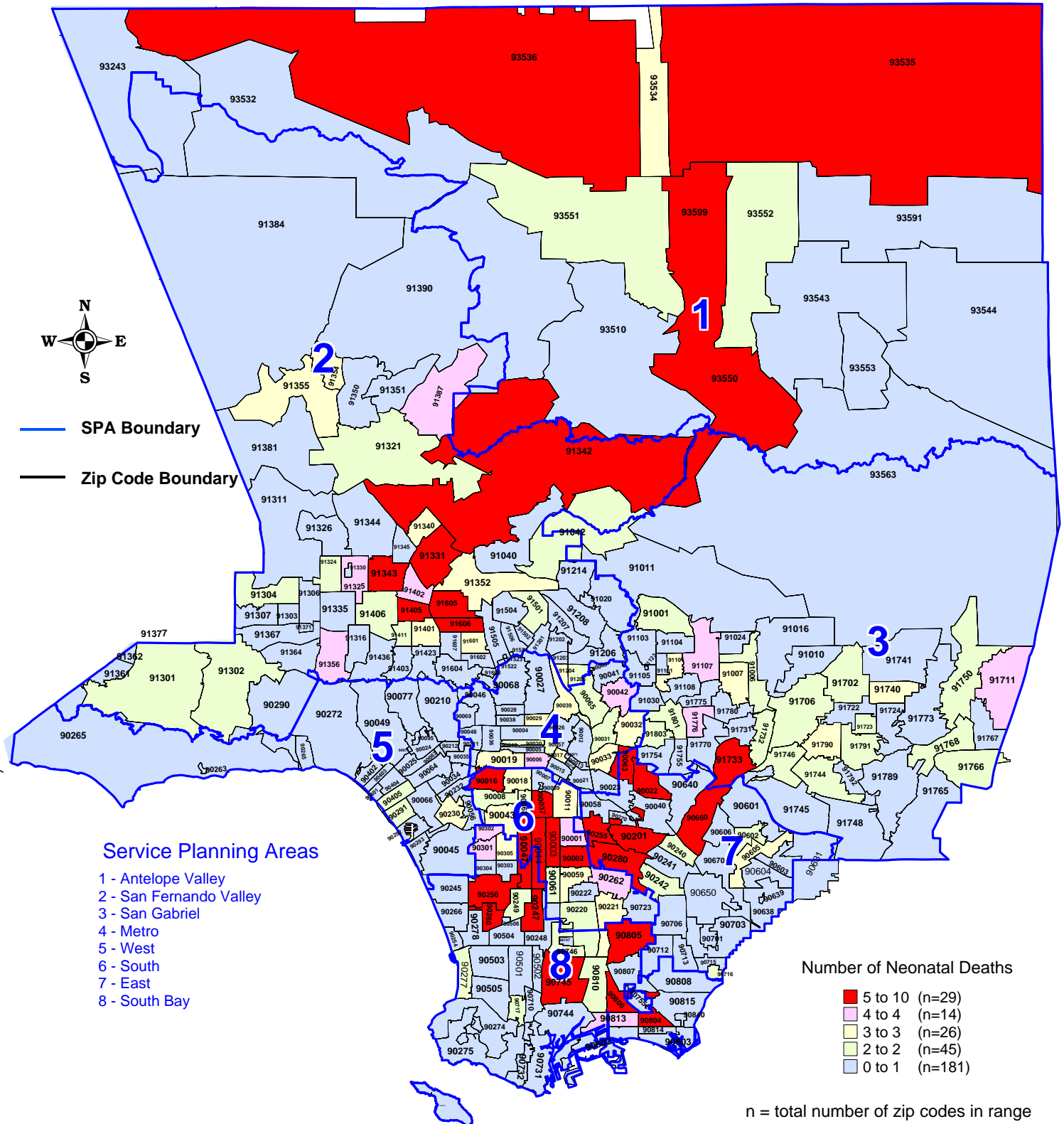
African American, Asian/Pacific Islander, Native American, White and other races exclude Hispanic ethnicity. Hispanic includes any race category.

Numbers fewer than 5 are shown as "<5". Rates are not calculated (N/C) if number is fewer than five.

Source: California Department of Public Health, Center for Health Statistics, OHIR Vital Statistics Section, 2009

# Number of Neonatal Deaths by Zip Code\* and Service Planning Area (SPA)

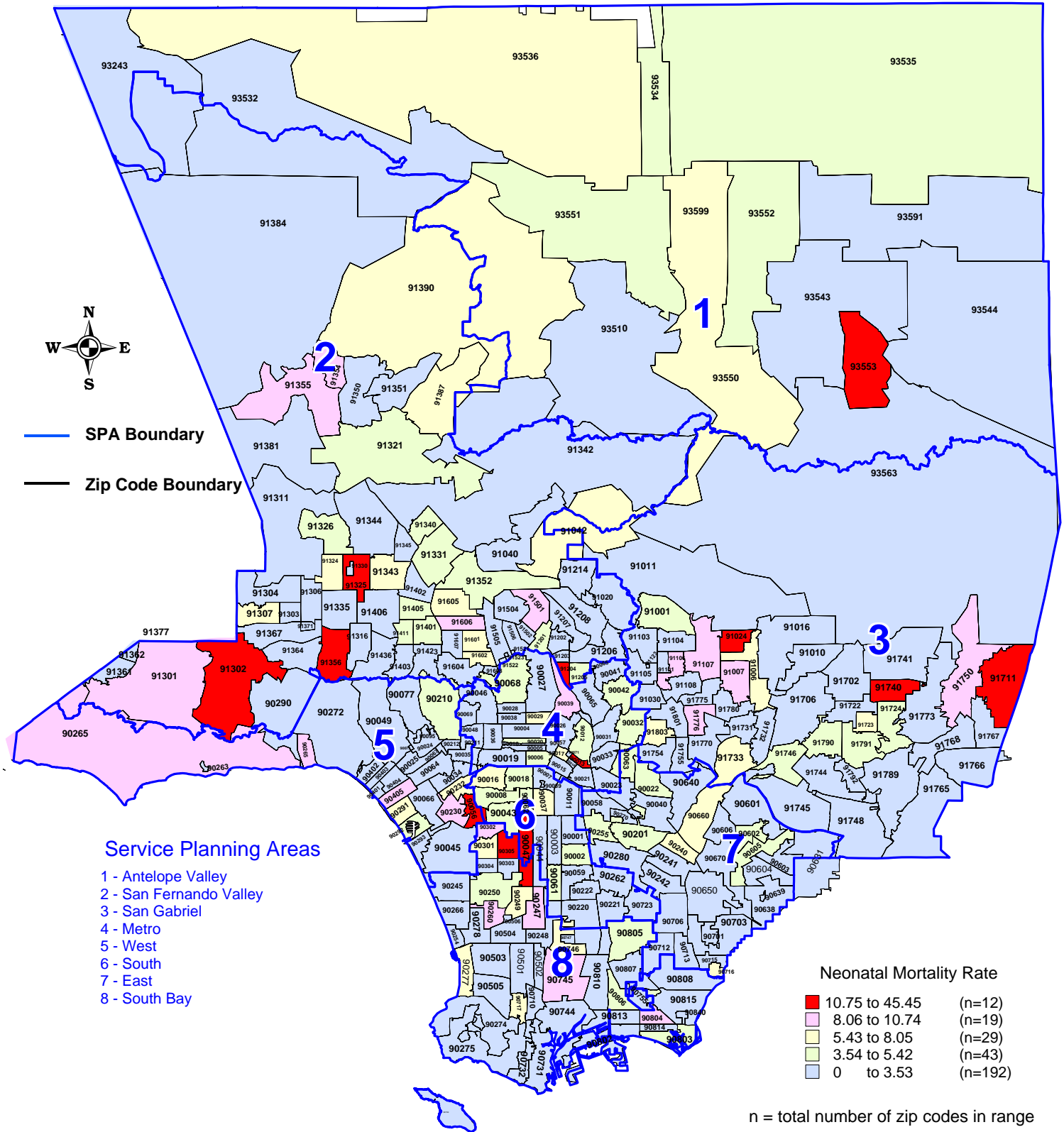
Los Angeles County, 2009



\*Los Angeles County zip code boundaries as of April 2007  
 Total number of live births in Los Angeles County, 2009 = 139,679  
 Total number of neonatal deaths in Los Angeles County, 2009 = 466  
 Note: Neonatal death is defined as deaths occurring less than 28 days of age.  
 Source : California Department of Public Health, Center for Health Statistics, OHIR Vital Statistics Section, 2009.

# Neonatal Mortality Rate by Zip Code\* and Service Planning Area (SPA)

Los Angeles County, 2009



\*Los Angeles County zip code boundaries as of April 2007  
 Total number of live births in Los Angeles County, 2009 = 139,679  
 Neonatal mortality rate per 1,000 live births in Los Angeles County, 2009 = 3.3  
 Year 2010 Objective: Reduce the neonatal mortality rate to no more than 2.9 per 1,000 live births.  
 Year 2020 Objective: Reduce the neonatal mortality rate to no more than 4.1 per 1,000 live births.  
 Note: Neonatal mortality rate is defined as infant deaths occurring less than 28 days per 1,000 live births.  
 Source : California Department of Public Health, Center for Health Statistics, OHIR Vital Statistics Section, 2009.

**TITLE V INDICATOR TEMPLATE**

**INDICATOR:** Post-Neonatal Mortality Rate

**DEFINITION:** The number of infant deaths occurring from 28 through 364 days of age per 1,000 live births

**NUMERATOR:** The number of infant deaths occurring from 28 through 364 days of age, by place of residence, in a calendar year

**DENOMINATOR:** The total number of live births, by place of residence, in a calendar year

**HEALTHY PEOPLE 2010 OBJECTIVE:**

Reduce the post-neonatal mortality rate to no more than 1.2 per 1,000 live births.  
(Baseline: 2.4 per 1,000 live births in 1998) (Objective 16-1e)

**HEALTHY PEOPLE 2020 OBJECTIVE:**

Reduce the post-neonatal mortality rate to no more than 2.0 per 1,000 live births.  
(Baseline: 2.2 per 1,000 live births in 2006) (Objective MICH-1.5)

**RISK FACTORS:**

Congenital anomalies; injuries; infection in late pregnancy; family history of SIDS; maternal smoking or drug use; young maternal age (teen births); race/ethnicity (African American, Puerto Rican)

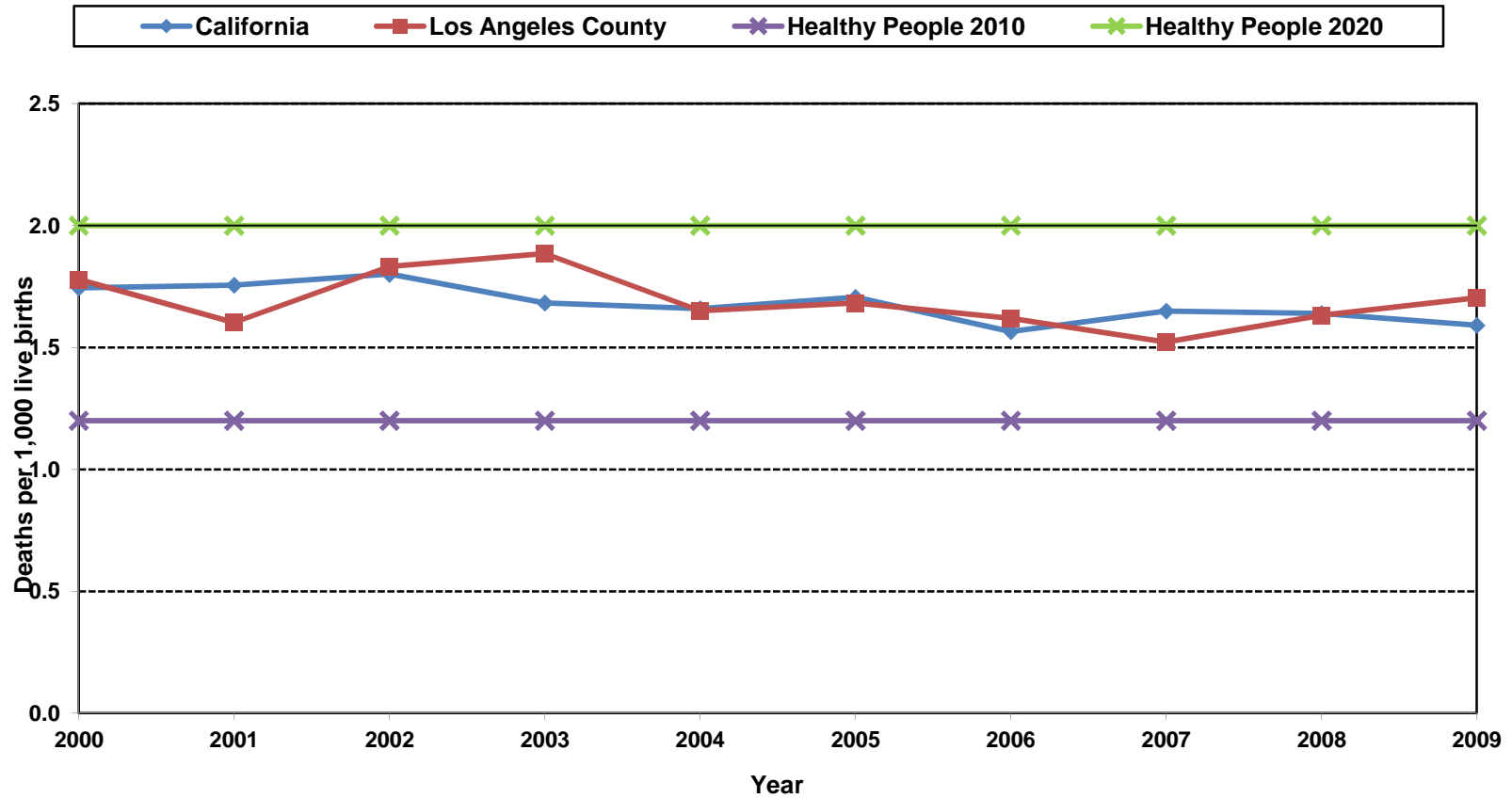
See also risk factors for infant mortality.

Year	California				Los Angeles County			
	Post-Neonatal Mortality		95% Confidence Interval		Post-Neonatal Mortality		95% Confidence Interval	
	Deaths	Rate	Lower	Upper	Deaths	Rate	Lower	Upper
2000	927	1.7	1.6	1.9	280	1.8	1.6	2.0
2001	926	1.8	1.6	1.9	246	1.6	1.4	1.8
2002	953	1.8	1.7	1.9	277	1.8	1.6	2.0
2003	910	1.7	1.6	1.8	287	1.9	1.7	2.1
2004	904	1.7	1.6	1.8	250	1.7	1.4	1.9
2005	936	1.7	1.6	1.8	253	1.7	1.5	1.9
2006	880	1.6	1.5	1.7	246	1.6	1.4	1.8
2007	934	1.6	1.5	1.8	231	1.5	1.3	1.7
2008	904	1.6	1.5	1.7	241	1.6	1.4	1.8
2009	838	1.6	1.5	1.7	238	1.7	1.5	1.9

Year	Denominator: Live Births	
	California	LA County
2000	531,285	157,391
2001	527,371	153,523
2002	529,245	151,167
2003	540,827	152,192
2004	544,685	151,504
2005	548,700	150,377
2006	562,157	151,837
2007	566,137	151,813
2008	551,567	147,684
2009	526,774	139,679

Source: California Department of Public Health, Center for Health Statistics, OHIR Vital Statistics Section, 2000-2009

### Post-Neonatal Deaths per 1,000 Live Births California vs. Los Angeles County, 2000-2009

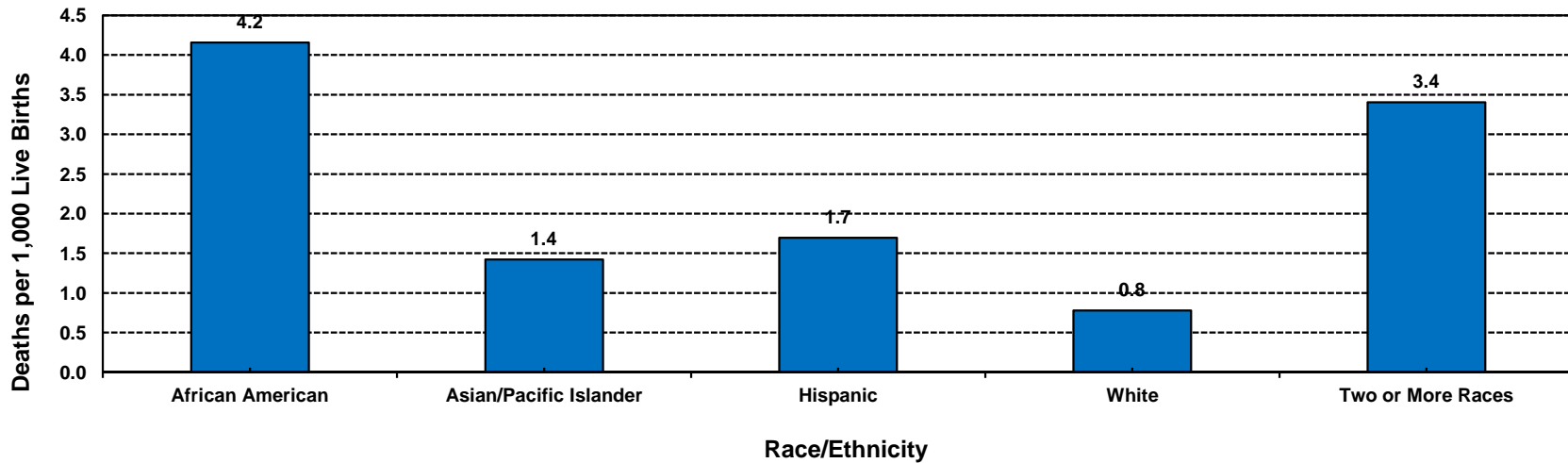


Year 2010 Objective: Reduce the post-neonatal mortality rate to no more than 1.2 per 1,000 live births.

Year 2020 Objective: Reduce the post-neonatal deaths to no more than 2.0 per 1,000 live births.

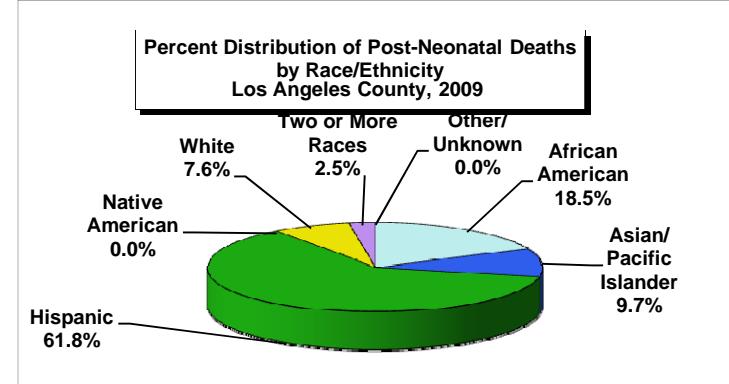
Source: California Department of Public Health, Center for Health Statistics, OHIR Vital Statistics Section, 2009

### Post-Neonatal Mortality Rate by Race/Ethnicity Los Angeles County, 2009



Los Angeles County, 2009				
Race/Ethnicity	Post-Neonatal Mortality		95% Confidence Interval	
	Deaths	Rate	Lower	Upper
African American	44	4.2	2.9	5.4
Asian/Pacific Islander	23	1.4	0.8	2.0
Hispanic	147	1.7	1.4	2.0
Native American	<5	N/C	N/C	N/C
White	18	0.8	0.4	1.1
Two or More Races	6	3.4	0.7	6.1
Other/Unknown	<5	N/C	N/C	N/C
<b>Total</b>	<b>238</b>	<b>1.7</b>	<b>1.5</b>	<b>1.9</b>

Total Live Births
10,589
16,179
86,642
202
23,150
1,762
1,155
<b>139,679</b>



Year 2010 Objective: Reduce the post-neonatal mortality rate to no more than 1.2 per 1,000 live births.

Year 2020 Objective: Reduce the post-neonatal deaths to no more than 2.0 per 1,000 live births.

Note: Post-neonatal mortality rate is defined as infant deaths occurring from 28 through 364 days of age per 1,000 live births.

Racial/ethnic categorization has been revised in this report; data from previous year reports may not be comparable.

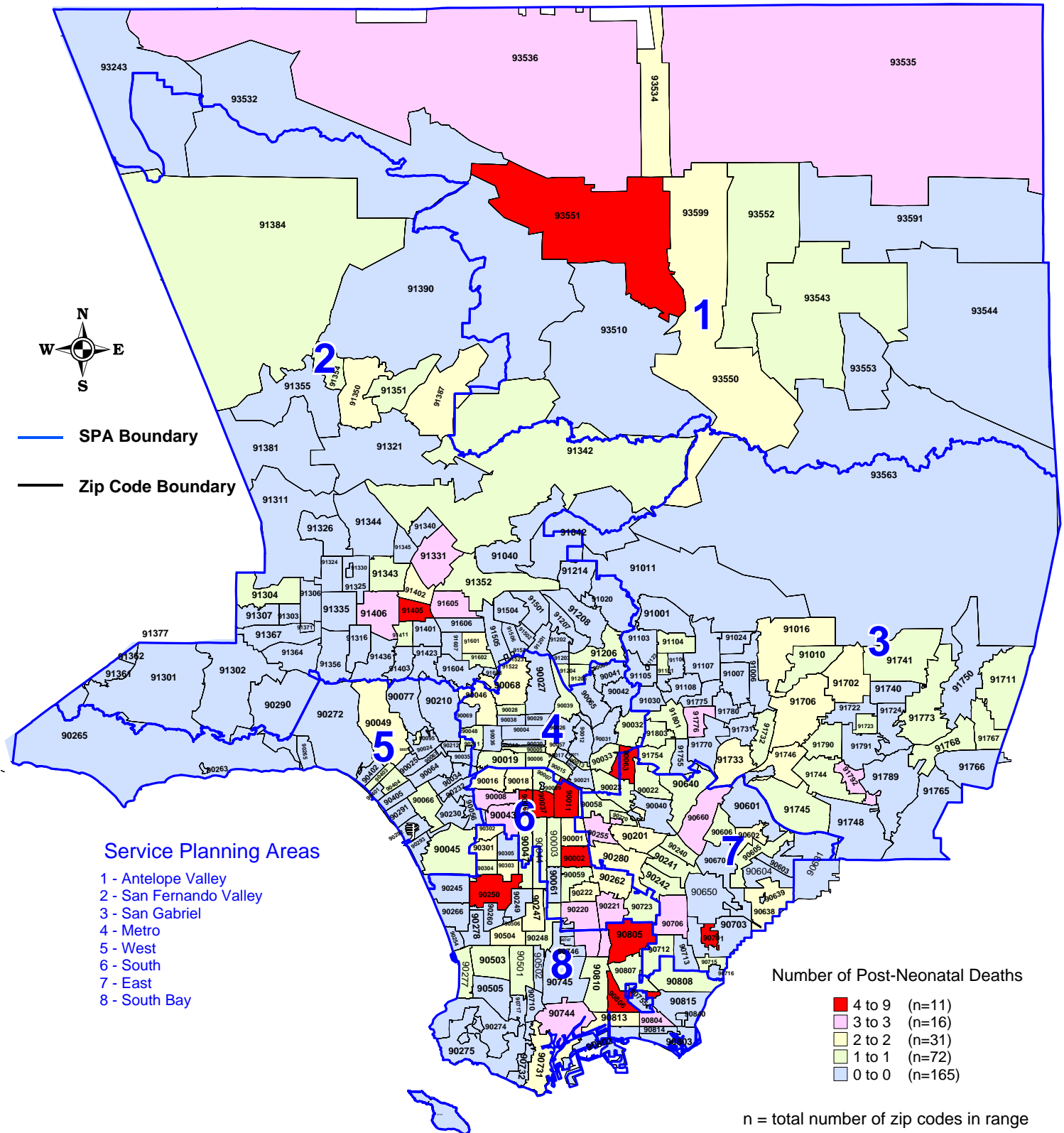
African American, Asian/Pacific Islander, Native American, White and other races exclude Hispanic ethnicity. Hispanic includes any race category.

Numbers fewer than 5 are shown as "<5". Rates are not calculated (N/C) if number is fewer than five.

Source: California Department of Public Health, Center for Health Statistics, OHIR Vital Statistics Section, 2009

# Number of Post-Neonatal Deaths by Zip Code\* and Service Planning Area (SPA)

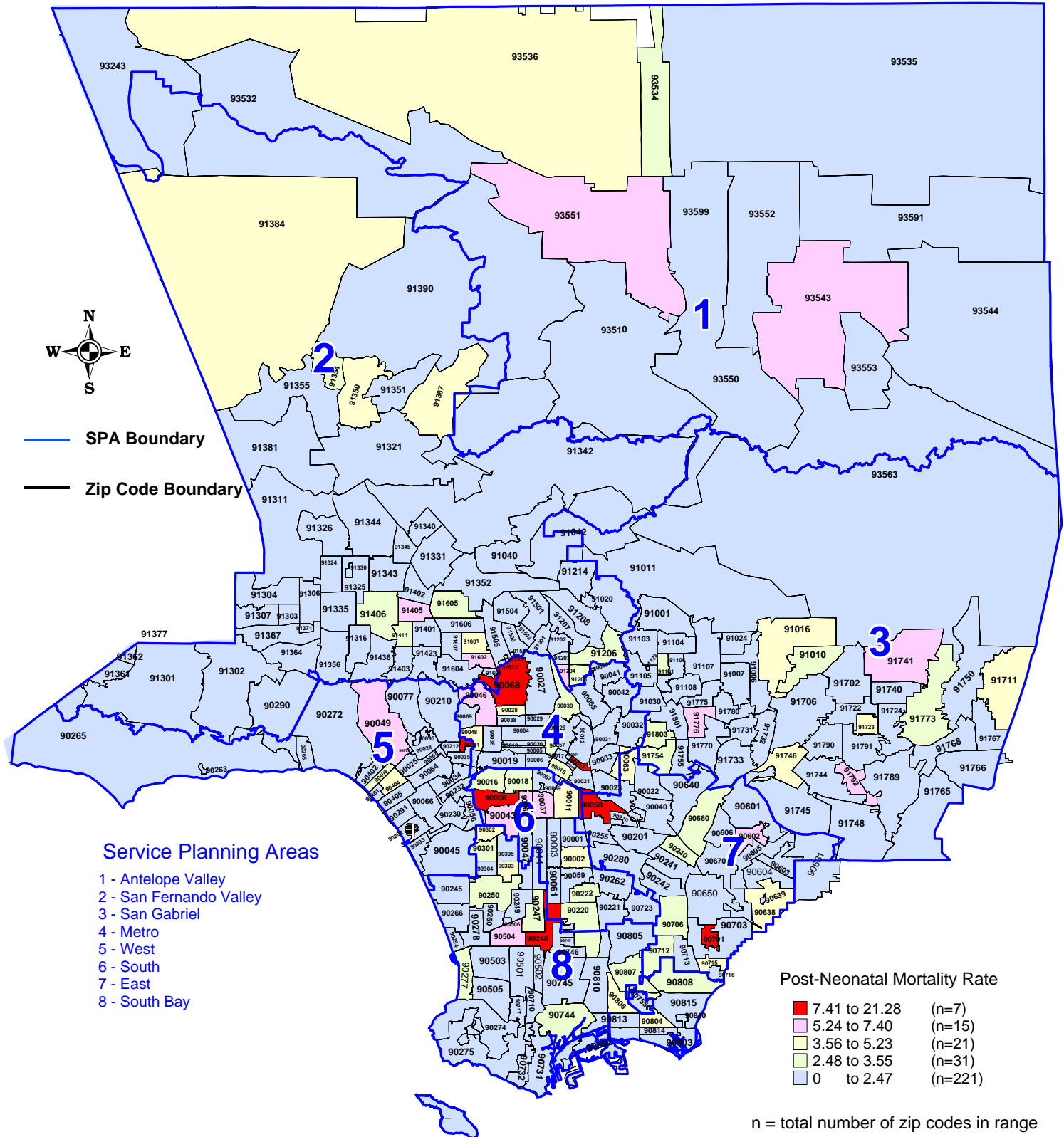
Los Angeles County, 2009



\*Los Angeles County zip code boundaries as of April 2007  
 Total number of live births in Los Angeles County, 2009 = 139,679  
 Total number of post-neonatal deaths in Los Angeles County, 2009 = 238  
 Note: Post-neonatal death is defined as deaths occurring from 28 through 364 days of age.  
 Source : California Department of Public Health, Center for Health Statistics, OHIR Vital Statistics Section, 2009.

# Post-Neonatal Mortality Rate by Zip Code\* and Service Planning Area (SPA)

Los Angeles County, 2009



\*Los Angeles County zip code boundaries as of April 2007  
 Total number of live births in Los Angeles County, 2009 = 139,679  
 Post-neonatal mortality rate per 1,000 live births in Los Angeles County, 2009 = 1.7  
 Year 2010 Objective: Reduce the post-neonatal mortality rate to no more than 1.2 per 1,000 live births.  
 Year 2020 Objective: Reduce the post-neonatal mortality rate to no more than 2.0 per 1,000 live births.  
 Note: Post-neonatal mortality rate is defined as infant deaths occurring from 28 through 364 days of age per 1,000 live births.  
 Source : California Department of Public Health, Center for Health Statistics, OHIR Vital Statistics Section, 2009.