

Fetal Mortality

TITLE V INDICATOR TEMPLATE

INDICATOR: Fetal Mortality Rate

DEFINITION: The number of fetal deaths occurring at 20 weeks or more gestation per 1,000 live births plus fetal deaths

NUMERATOR: The number of fetal deaths occurring at 20 weeks or more gestation, by place of residence, in a calendar year

DENOMINATOR: The total number of live births plus fetal deaths, by place of residence, in a calendar year

HEALTHY PEOPLE 2010 OBJECTIVE:

Reduce the fetal death rate (20 or more weeks of gestation) to no more than 4.1 per 1,000 live births plus fetal deaths. (Baseline: 6.8 per 1,000 live births plus fetal deaths in 1997) (Objective 16-1a)

HEALTHY PEOPLE 2020 OBJECTIVE:

Reduce the fetal death rate (20 or more weeks of gestation) to no more than 5.6 per 1,000 live births plus fetal deaths. (Baseline: 6.2 per 1,000 live births plus fetal deaths in 2005) (Objective MICH-1.1)

RISK FACTORS:

Race/ethnicity (African American); maternal diabetes; pregnancy complications; maternal medical complications/chronic illness during pregnancy (including severe maternal infection); Rh sensitization; congenital anomalies; intrauterine cocaine exposure; maternal history of miscarriage

Year	California				Los Angeles County			
	Fetal Mortality		95 % Confidence Interval		Fetal Mortality		95 % Confidence Interval	
	Deaths	Rate	Lower	Upper	Deaths	Rate	Lower	Upper
2000	2,817	5.3	5.1	5.5	864	5.5	5.1	5.8
2001	2,709	5.1	4.9	5.3	784	5.1	4.7	5.4
2002	2,647	5.0	4.8	5.2	740	4.9	4.5	5.2
2003	2,701	5.0	4.8	5.2	756	4.9	4.6	5.3
2004	2,654	4.8	4.7	5.0	708	4.7	4.3	5.0
2005	2,788	5.1	4.9	5.2	790	5.2	4.9	5.6
2006	2,779	4.9	4.7	5.1	759	5.0	4.6	5.3
2007	2,632	4.6	4.5	4.8	753	4.9	4.6	5.3
2008	2,559	4.6	4.4	4.8	733	4.9	4.6	5.3
2009	2,574	4.9	4.7	5.0	665	4.7	4.4	5.1

Denominator : Total Births		
Year	California	LA County
2000	534,102	158,255
2001	530,080	154,307
2002	531,892	151,907
2003	543,528	152,948
2004	547,339	152,212
2005	551,488	151,167
2006	564,936	152,596
2007	568,769	152,566
2008	554,126	148,417
2009	529,348	140,344

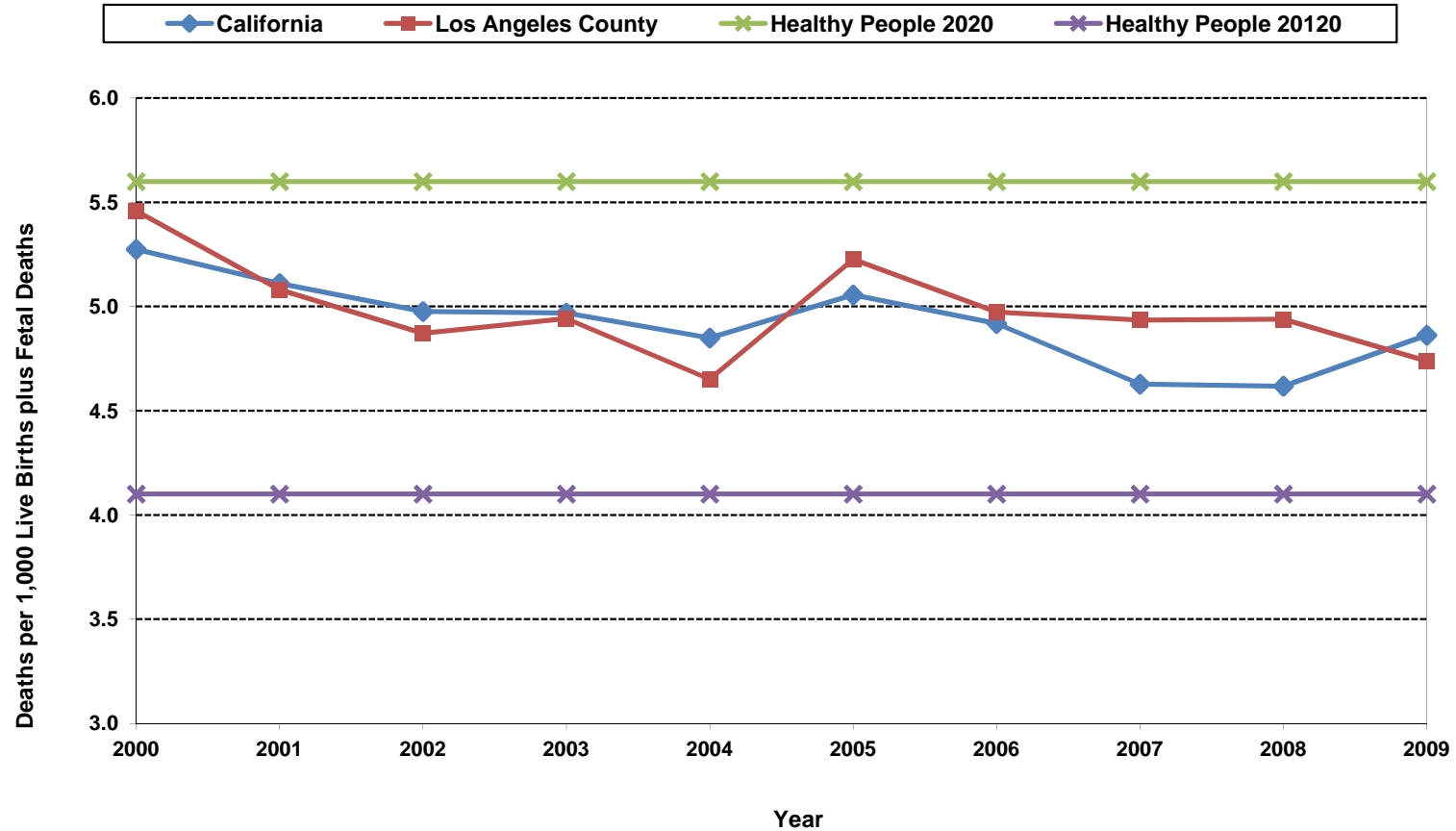
Note: Total Births = Live Births + Fetal Deaths.

For numbers of fetal deaths in California and Los Angeles County, records with missing gestational age are excluded. (191 & 53 respectively in 2009)

Gestation is calculated from reported date of last menses.

Source: California Department of Public Health, Center for Health Statistics, OHIR Vital Statistics Section, 2000-2009.

Fetal Deaths per 1,000 Live Births plus Fetal Deaths California vs. Los Angeles County, 2000-2009

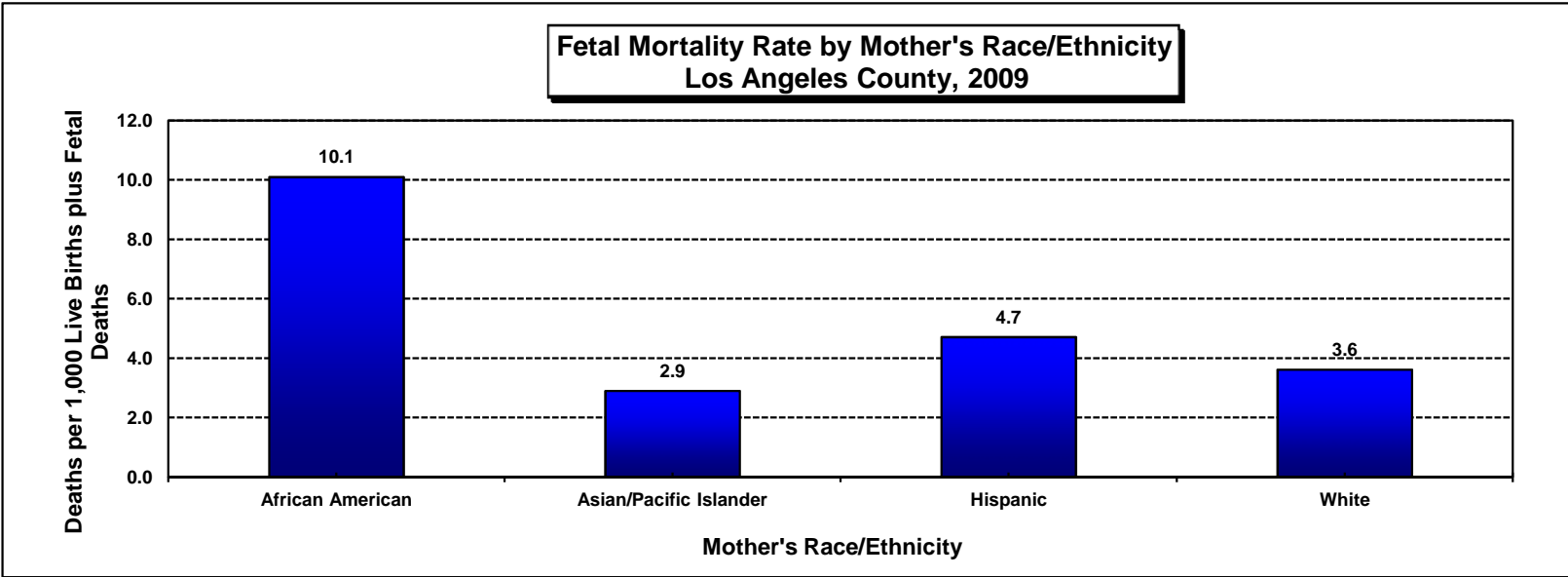


Year 2010 Objective: Reduce fetal mortality (20 or more weeks of gestation) rate to no more than 4.1 per 1,000 live births plus fetal deaths.

Year 2020 Objective: Reduce fetal mortality (20 or more weeks of gestation) rate to no more than 5.6 per 1,000 live births plus fetal deaths.

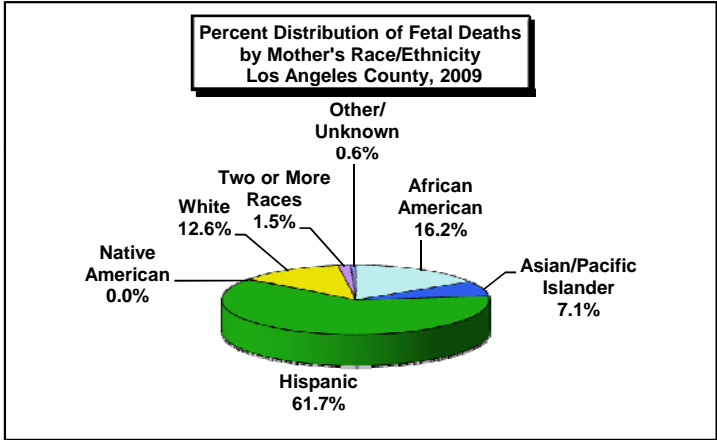
Note: For numbers of fetal deaths in California and Los Angeles County, records with missing gestational age are excluded. (191 & 53 respectively in 2009)
Gestation is calculated from reported date of last menses.

Source: California Department of Public Health, Center for Health Statistics, OHIR Vital Statistics Section, 2000-2009.



Los Angeles County, 2009				
Mother's Race/Ethnicity	Fetal Mortality		95% Confidence Interval	
	Deaths	Rate	Lower	Upper
African American	108	10.1	8.2	12.0
Asian/Pacific Islander	47	2.9	2.1	3.7
Hispanic	410	4.7	4.3	5.2
Native American	<5	N/C	N/C	N/C
White	84	3.6	2.8	4.4
Two or More Races	10	5.6	2.2	9.1
Other/ Unknown	<5	N/C	N/C	N/C
Total	665	4.7	4.4	5.1

Total Live Births plus Fetal Deaths
10,697
16,226
87,052
204
23,234
1,772
1,159
140,344

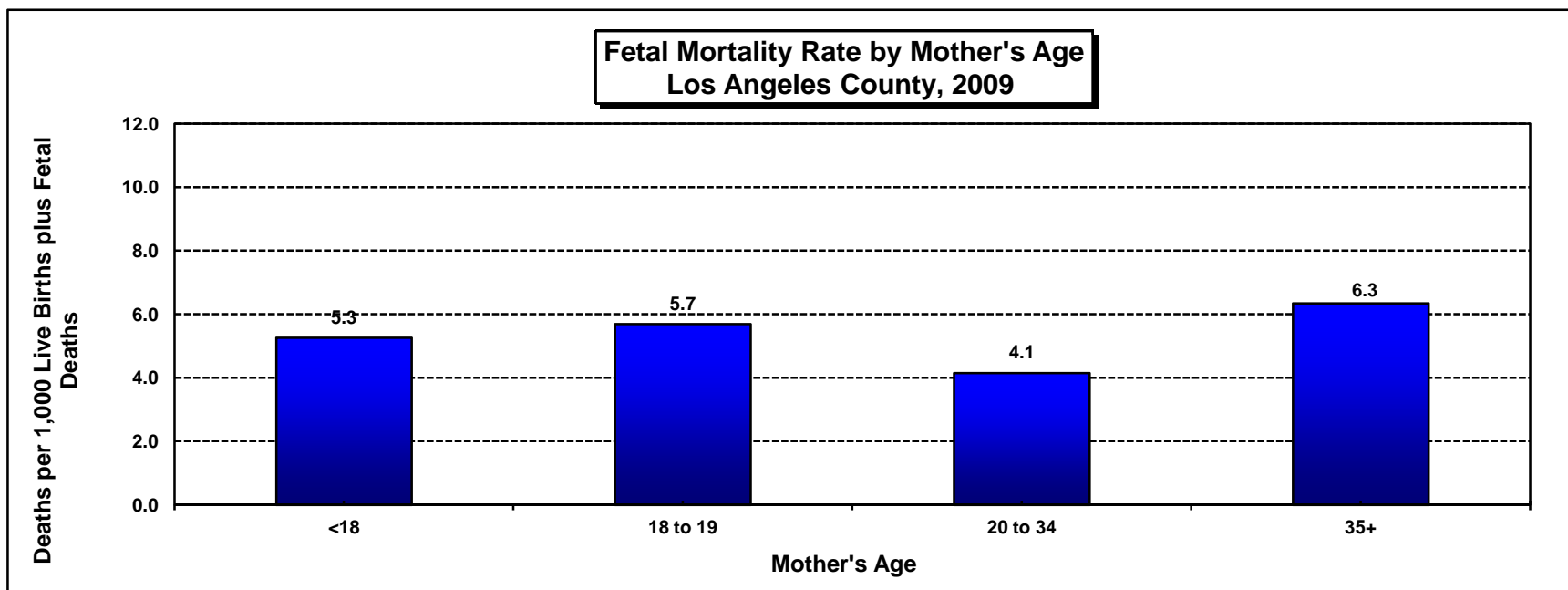


Year 2010 Objective: Reduce fetal mortality (20 or more weeks of gestation) rate to no more than 4.1 per 1,000 live births plus fetal deaths.

Year 2020 Objective: Reduce fetal mortality (20 or more weeks of gestation) rate to no more than 5.6 per 1,000 live births plus fetal deaths.

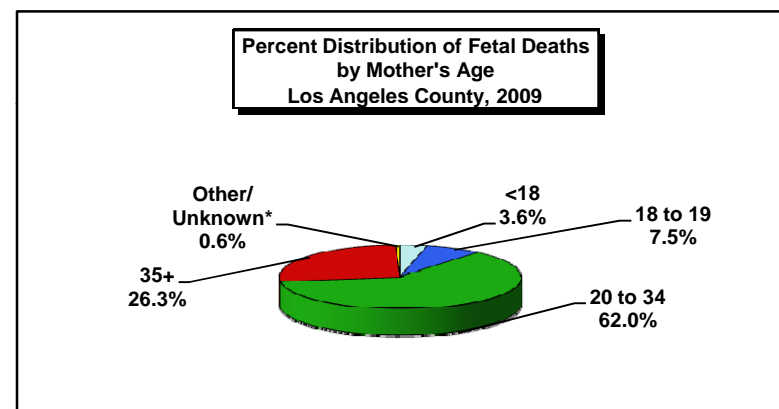
Note: Fetal mortality rate is defined as deaths occurring at 20 weeks or more gestation per 1,000 live births plus fetal deaths. Gestation is calculated from reported date of last menses. Records with missing gestational age are excluded. (n=53) Racial/ethnic categorization has been revised in this report; data from previous year reports may not be comparable. African American, Asian/Pacific Islander, Native American, White and other races exclude Hispanic ethnicity. Hispanic includes any race category. Numbers fewer than 5 are shown as "<5". Rates are not calculated (N/C) if number is fewer than five.

Source: California Department of Public Health, Center for Health Statistics, OHIR Vital Statistics Section, 2009.



Los Angeles County, 2009				
Mother's Age	Fetal Mortality		95% Confidence Interval	
	Deaths	Rate	Lower	Upper
<18	24	5.3	3.2	7.4
18 to 19	50	5.7	4.1	7.3
20 to 34	412	4.1	3.7	4.5
35+	175	6.3	5.4	7.3
Other/ Unknown*	4	N/C	N/C	N/C
Total	665	4.7	4.4	5.1

Total Live Births plus Fetal Deaths
4,563
8,789
99,405
27,571
16
140,344



Year 2010 Objective: Reduce fetal mortality (20 or more weeks of gestation) rate to no more than 4.1 per 1,000 live births plus fetal deaths.

Year 2020 Objective: Reduce fetal mortality (20 or more weeks of gestation) rate to no more than 5.6 per 1,000 live births plus fetal deaths.

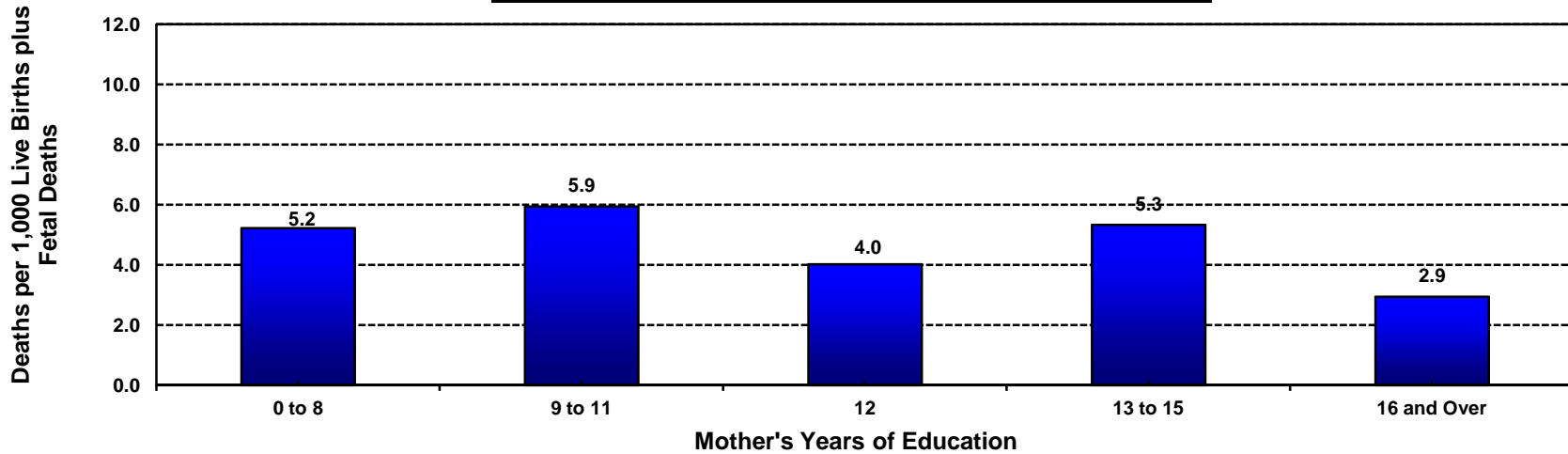
Note: Fetal mortality rate is defined as deaths occurring at 20 weeks or more gestation per 1,000 live births plus fetal deaths.

Gestation is calculated from reported date of last menses. Records with missing gestational age are excluded. (n=53)

* Rates are not calculated due to small number in the denominator.

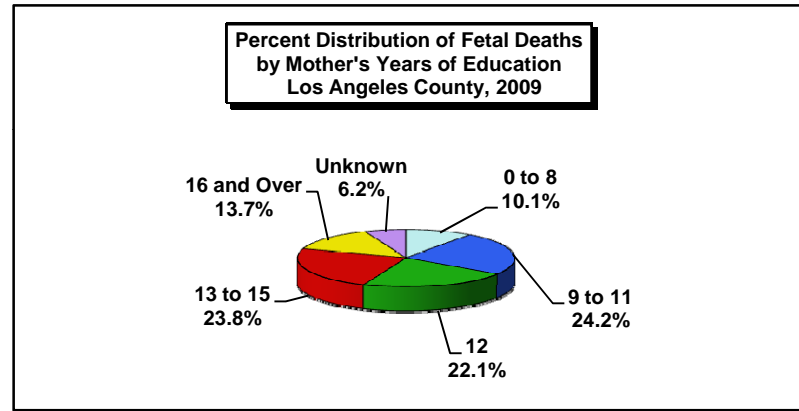
Source: California Department of Public Health, Center for Health Statistics, OHIR Vital Statistics Section, 2009.

Fetal Mortality Rate by Mother's Years of Education Los Angeles County, 2009



Los Angeles County, 2009				
Mother's Years of Education	Fetal Mortality		95% Confidence Interval	
	Deaths	Rate	Lower	Upper
0 to 8	67	5.2	4.3	6.1
9 to 11	161	5.9	5.3	6.6
12	147	4.0	3.6	4.5
13 to 15	158	5.3	4.7	5.9
16 and Over	91	2.9	2.5	3.4
Unknown	41	12.6	9.9	15.3
Total	665	4.7	4.5	5.0

Total Live Births plus Fetal Deaths
12,832
27,081
36,589
29,603
30,976
3,263
140,344



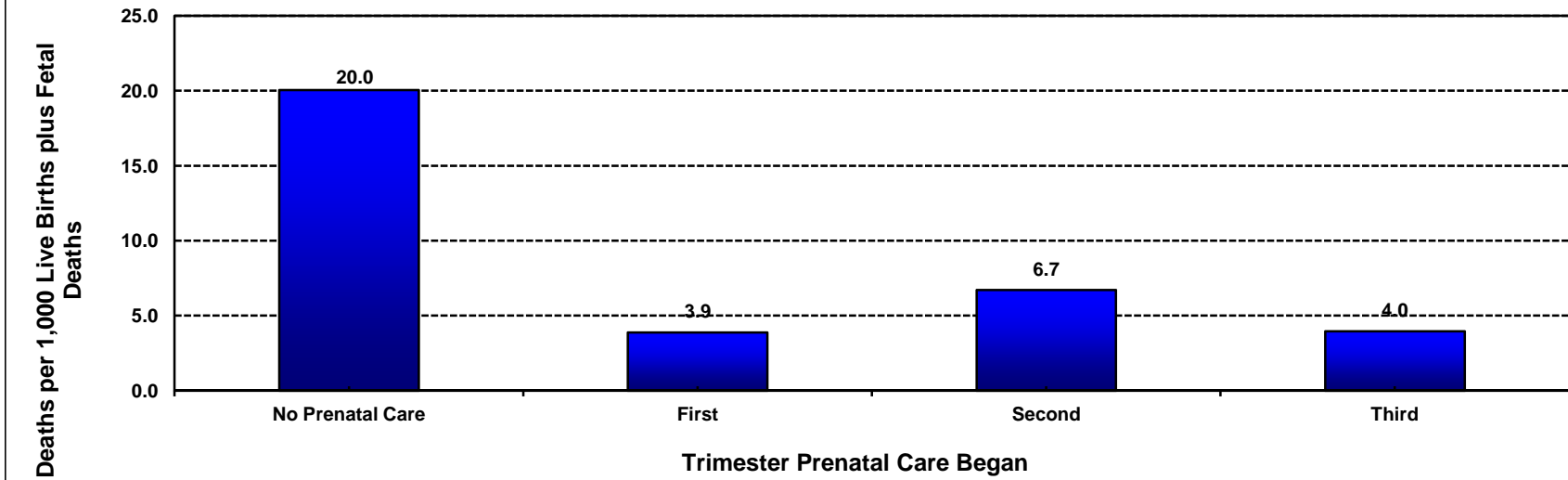
Year 2010 Objective: Reduce fetal mortality (20 or more weeks of gestation) rate to no more than 4.1 per 1,000 live births plus fetal deaths.

Year 2020 Objective: Reduce fetal mortality (20 or more weeks of gestation) rate to no more than 5.6 per 1,000 live births plus fetal deaths.

Note: Fetal mortality rate is defined as deaths occurring at 20 weeks or more gestation per 1,000 live births plus fetal deaths. Gestation is calculated from reported date of last menses. Records with missing gestational age are excluded. (n=53)

Source: California Department of Public Health, Center for Health Statistics, OHIR Vital Statistics Section, 2009.

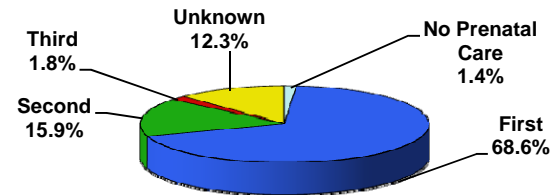
**Fetal Mortality Rate by Mother's Trimester Prenatal Care (PNC) Began
Los Angeles County, 2009**



Los Angeles County, 2009				
Mother's Trimester Prenatal Care Began	Fetal Mortality		95% Confidence Interval	
	Deaths	Rate	Lower	Upper
No Prenatal Care	9	20.0	10.8	29.3
First	456	3.9	3.6	4.1
Second	106	6.7	5.8	7.6
Third	12	4.0	2.4	5.6
Unknown	82	20.9	17.7	24.1
Total	665	4.7	4.5	5.0

Total Live Births plus Fetal Deaths
449
117,173
15,772
3,026
3,924
140,344

**Percent Distribution of Fetal Deaths by Mother's Trimester Prenatal Care Began
Los Angeles County, 2009**



Year 2010 Objective: Reduce fetal mortality (20 or more weeks of gestation) rate to no more than 4.1 per 1,000 live births plus fetal deaths.

Year 2020 Objective: Reduce fetal mortality (20 or more weeks of gestation) rate to no more than 5.6 per 1,000 live births plus fetal deaths.

Note: Fetal mortality rate is defined as deaths occurring at 20 weeks or more gestation per 1,000 live births plus fetal deaths.

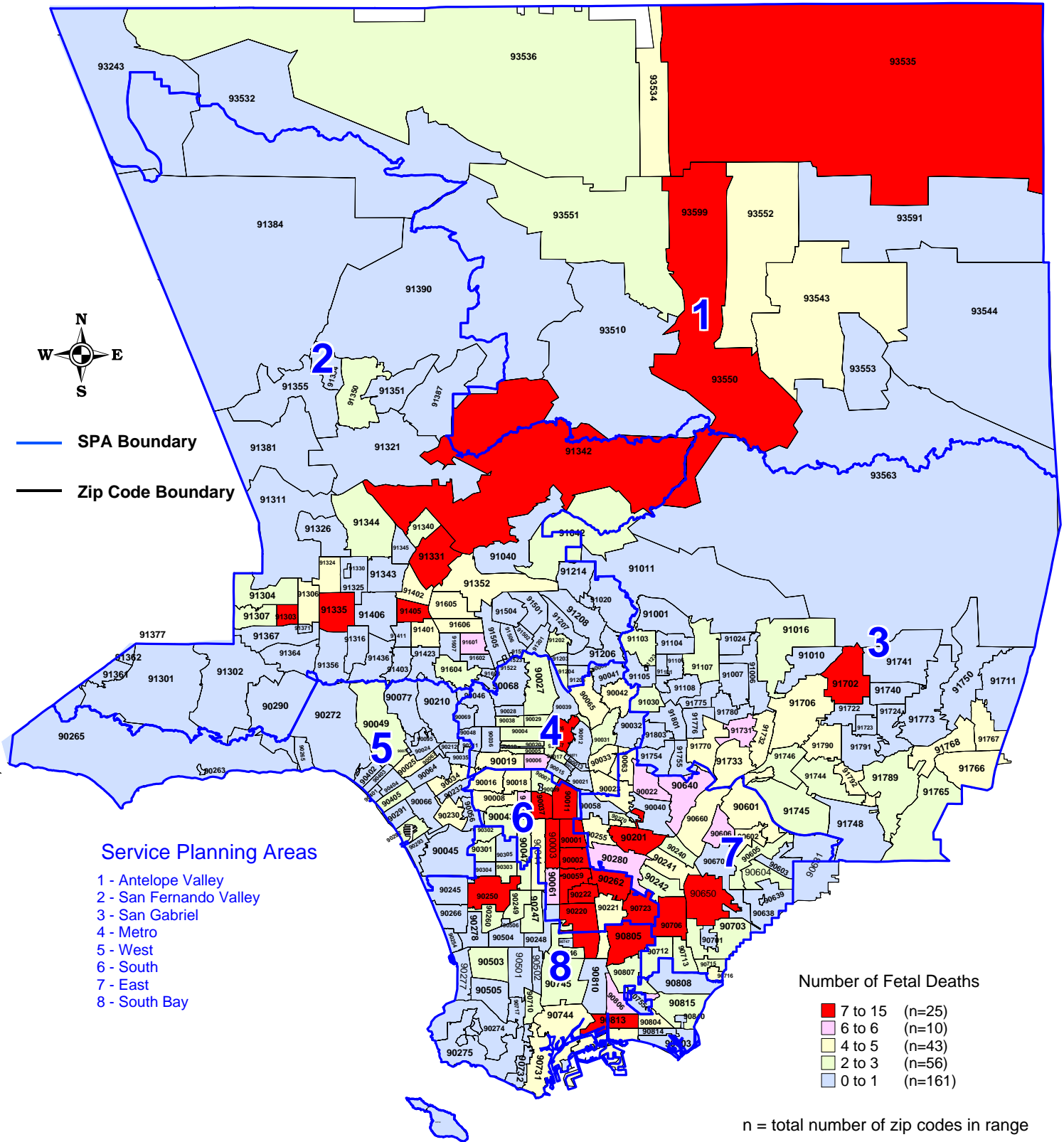
Gestation is calculated from reported date of last menses. Records with missing gestational age are excluded. (n=53)

"Trimester Prenatal Care (PNC) Began" excludes the prenatal care experiences of all women whose pregnancies did not result in a live birth.

Source: California Department of Public Health, Center for Health Statistics, OHIR Vital Statistics Section, 2009.

Number of Fetal Deaths by Zip Code* and Service Planning Area (SPA)

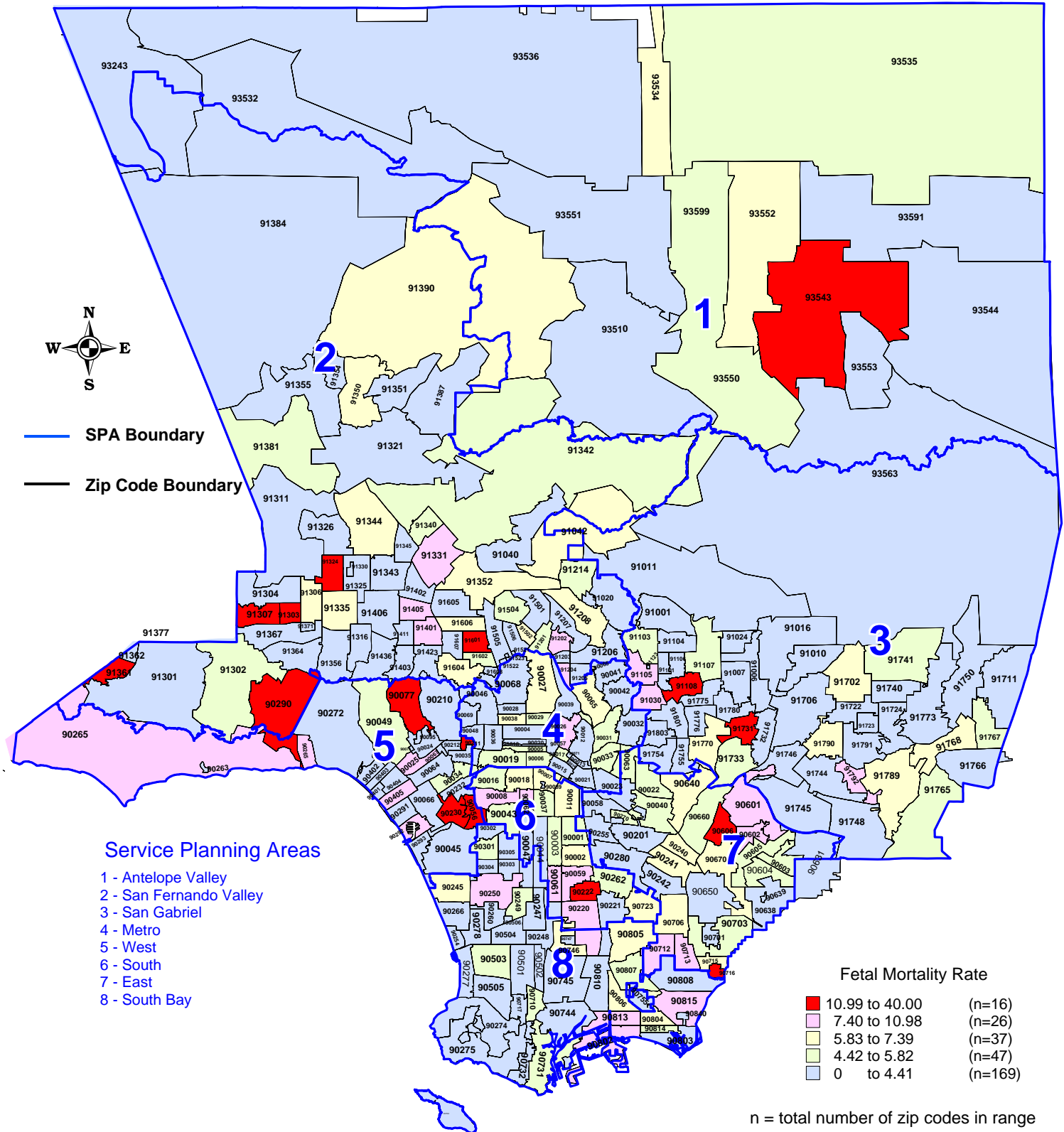
Los Angeles County, 2009



*Los Angeles County zip code boundaries as of April 2007
 Total number of live births in Los Angeles County, 2009 = 139,679
 Total number of fetal deaths in Los Angeles County, 2009 = 665
 Note: Fetal death is defined as deaths occurring at 20 weeks or more gestation.
 Source : California Department of Public Health, Center for Health Statistics, OHIR Vital Statistics Section, 2009.

Fetal Mortality Rate by Zip Code* and Service Planning Area (SPA)

Los Angeles County, 2009



*Los Angeles County zip code boundaries as of April 2007

Total number of live births in Los Angeles County, 2009 = 139,679

Fetal mortality rate per 1,000 live births plus fetal deaths in Los Angeles County, 2009 = 4.7

Year 2010 Objective: Reduce the fetal mortality (20 or more weeks of gestation) rate to no more than 4.1 per 1,000 live births plus fetal deaths.

Year 2020 Objective: Reduce the fetal mortality (20 or more weeks of gestation) rate to no more than 5.6 per 1,000 live births plus fetal deaths.

Note: Fetal mortality rate is defined as deaths occurring at 20 weeks or more gestation per 1,000 live births plus fetal deaths.

Source : California Department of Public Health, Center for Health Statistics, OHIR Vital Statistics Section, 2009.