

Infant Mortality

TITLE V INDICATOR TEMPLATE

INDICATOR: Infant Mortality Rate

DEFINITION: The number of infant deaths occurring at less than 365 days of age per 1,000 live births

NUMERATOR: The number of infant deaths occurring at less than 365 days of age, by place of residence, in a calendar year

DENOMINATOR: The total number of live births, by place of residence, in a calendar year

HEALTHY PEOPLE 2010 OBJECTIVE:

Reduce the infant mortality rate to no more than 4.5 per 1,000 live births.
(Baseline: 7.2 per 1,000 live births in 1998) (Objective 16-1c)

RISK FACTORS:

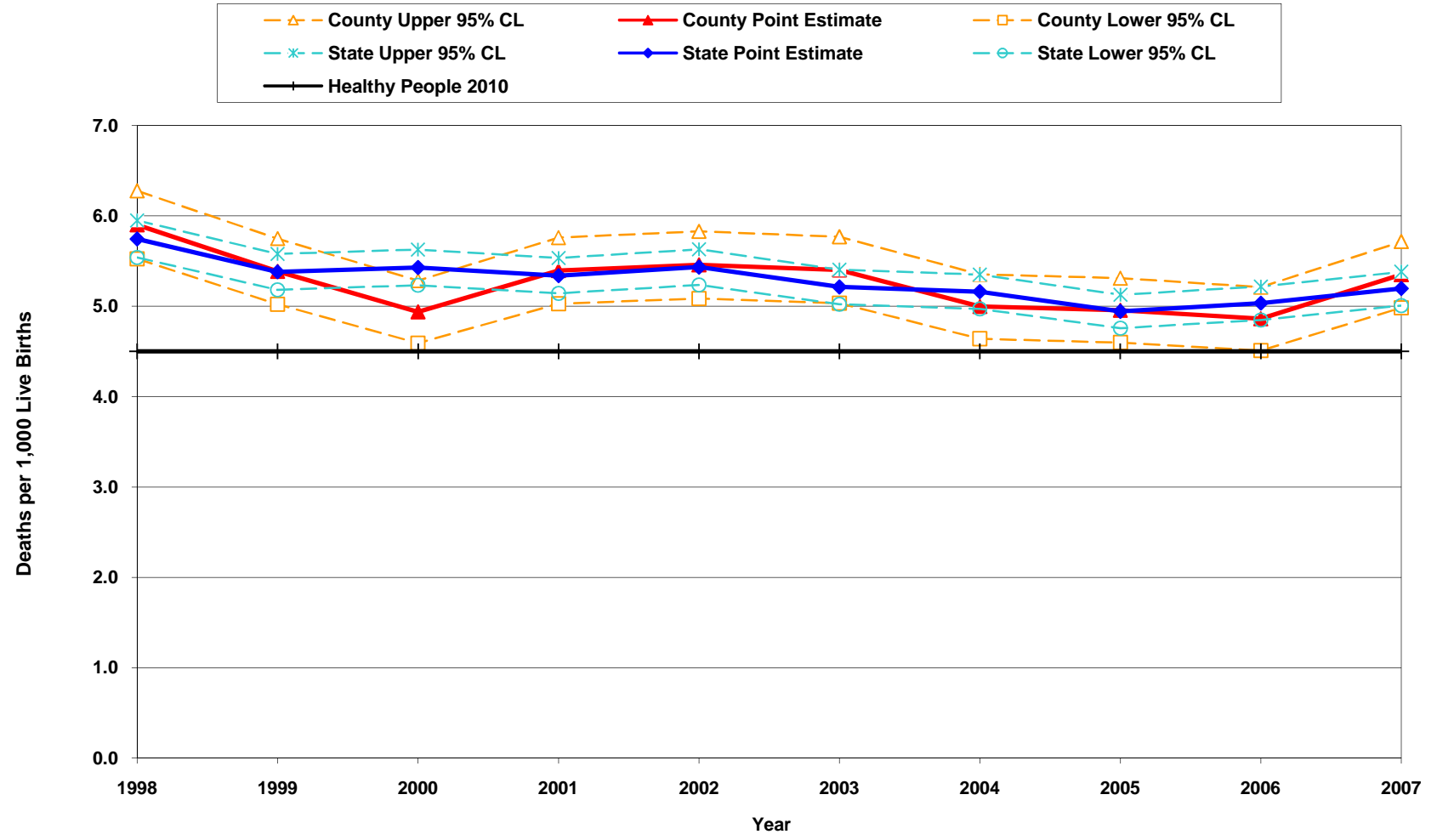
Race/ethnicity; prematurity/disorders related to short gestation; low birth weight; congenital anomalies; young maternal age; low maternal education level; maternal tobacco use; maternal alcohol or substance use/abuse; poor maternal nutrition; inadequate prenatal care; unintended pregnancy; maternal psychosocial problems; maternal medical complications/chronic illness during pregnancy (including diabetes); pregnancy complications; short interpregnancy interval; injury (including domestic violence); infection; respiratory distress syndrome; family history of SIDS

Year	California				Los Angeles County			
	Infant Mortality		95% Confidence Interval		Infant Mortality		95% Confidence Interval	
	Deaths	Rate	Lower	Upper	Deaths	Rate	Lower	Upper
1998	2,994	5.7	5.5	5.9	936	5.9	5.5	6.3
1999	2,787	5.4	5.2	5.6	841	5.4	5.0	5.7
2000	2,884	5.4	5.2	5.6	777	4.9	4.6	5.3
2001	2,815	5.3	5.1	5.5	828	5.4	5.0	5.8
2002	2,875	5.4	5.2	5.6	825	5.5	5.1	5.8
2003	2,819	5.2	5.0	5.4	822	5.4	5.0	5.8
2004	2,811	5.2	5.0	5.4	757	5.0	4.6	5.4
2005	2,712	4.9	4.8	5.1	745	5.0	4.6	5.3
2006	2,829	5.0	4.8	5.2	738	4.9	4.5	5.2
2007	2,941	5.2	5.0	5.4	812	5.3	5.0	5.7

Denominator: Live Births		
Year	California	LA County
1998	521,265	158,604
1999	518,073	156,153
2000	531,285	157,391
2001	527,371	153,523
2002	529,245	151,167
2003	540,827	152,192
2004	544,685	151,504
2005	548,700	150,377
2006	562,157	151,837
2007	566,137	151,813

Source: California Department of Public Health, Center for Health Statistics, OHIR Vital Statistics Section, 1998-2007.

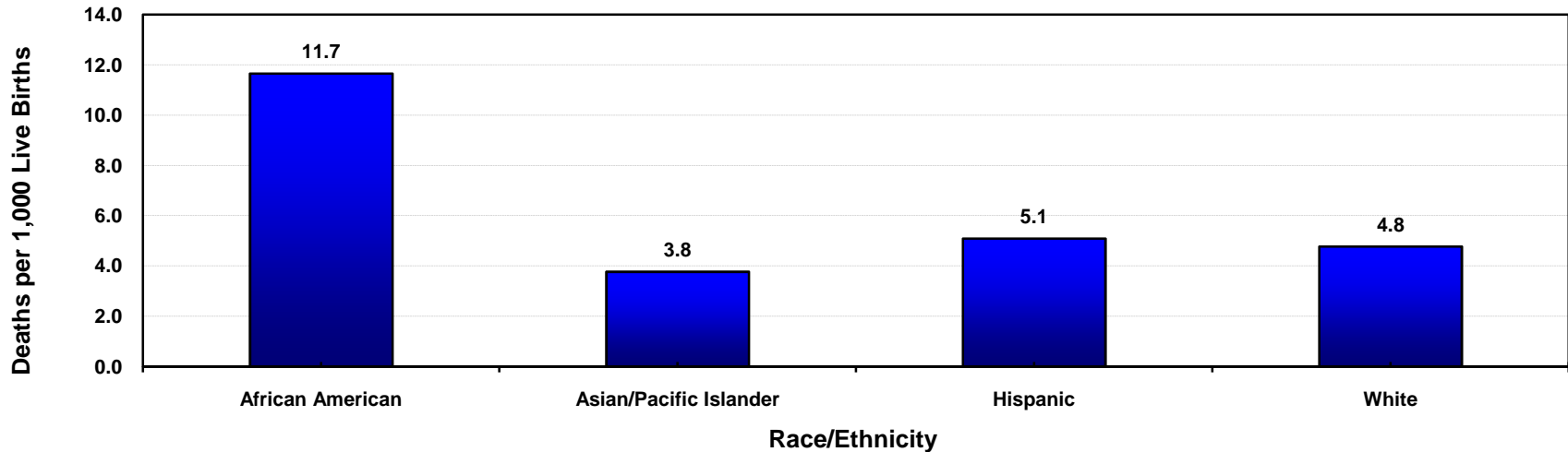
Infant Deaths per 1,000 Live Births California vs. Los Angeles County, 1998-2007



Year 2010 Objective: Reduce the infant mortality rate to no more than 4.5 per 1,000 live births.

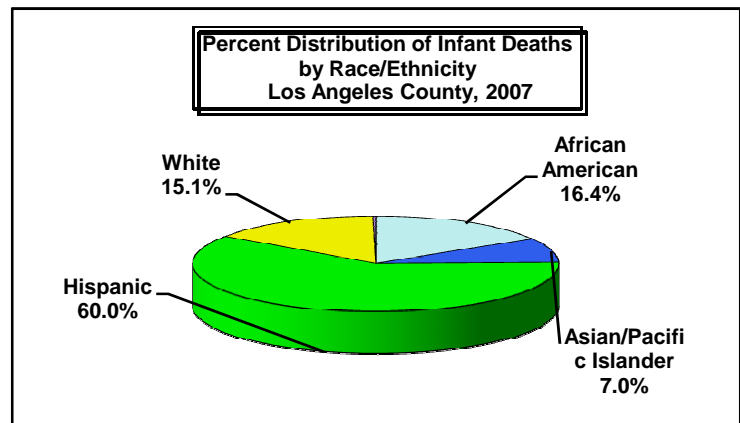
Source: California Department of Public Health, Center for Health Statistics, OHIR Vital Statistics Section, 1998-2007.

Infant Mortality Rate by Race/Ethnicity Los Angeles County, 2007



Los Angeles County, 2007				
Race/Ethnicity	Infant Mortality		95% Confidence Interval	
	Deaths	Rate	Lower	Upper
African American	133	11.7	9.7	13.6
Asian/Pacific Islander	67	3.8	2.9	4.7
Hispanic	487	5.1	4.6	5.5
Native American	0	N/C	N/C	N/C
White	123	4.8	3.9	5.6
Other/Unknown	2	N/C	N/C	N/C
Total	812	5.3	5.0	5.7

Total Live Births
11,406
17,769
95,686
236
25,758
958
151,813



Year 2010 Objective: Reduce the infant mortality rate to no more than 4.5 per 1,000 live births.

Note: Infant mortality rate is defined as infant deaths occurring less than 365 days per 1,000 live births.

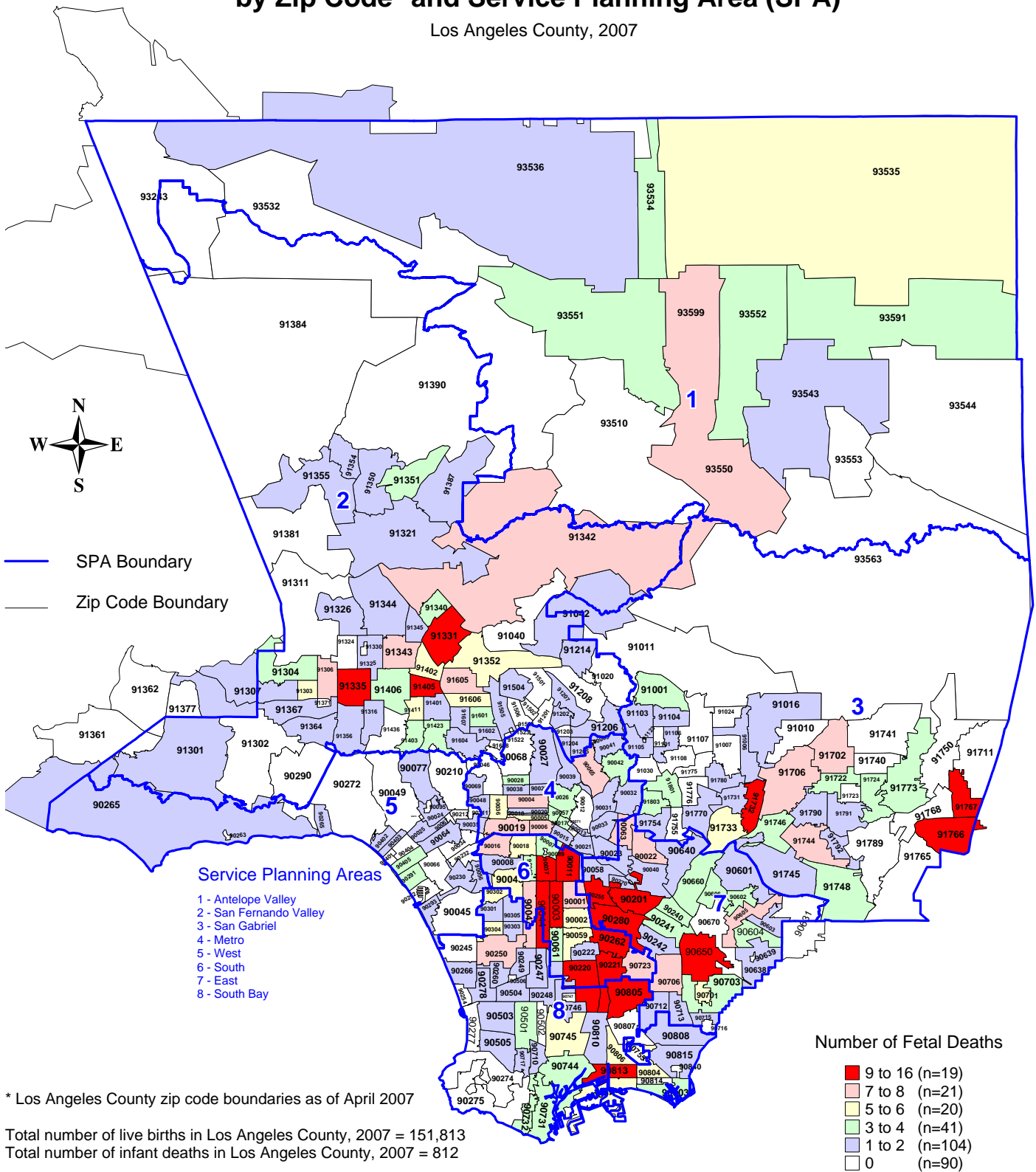
African American, Asian/Pacific Islander, Native American, White and other races exclude Hispanic ethnicity. Hispanic includes any race category.

Rates are not calculated (N/C) if fewer than five deaths.

Source: California Department of Public Health, Center for Health Statistics, OHIR Vital Statistics Section, 2007.

Number of Infant Deaths by Zip Code* and Service Planning Area (SPA)

Los Angeles County, 2007



* Los Angeles County zip code boundaries as of April 2007

Total number of live births in Los Angeles County, 2007 = 151,813
 Total number of infant deaths in Los Angeles County, 2007 = 812

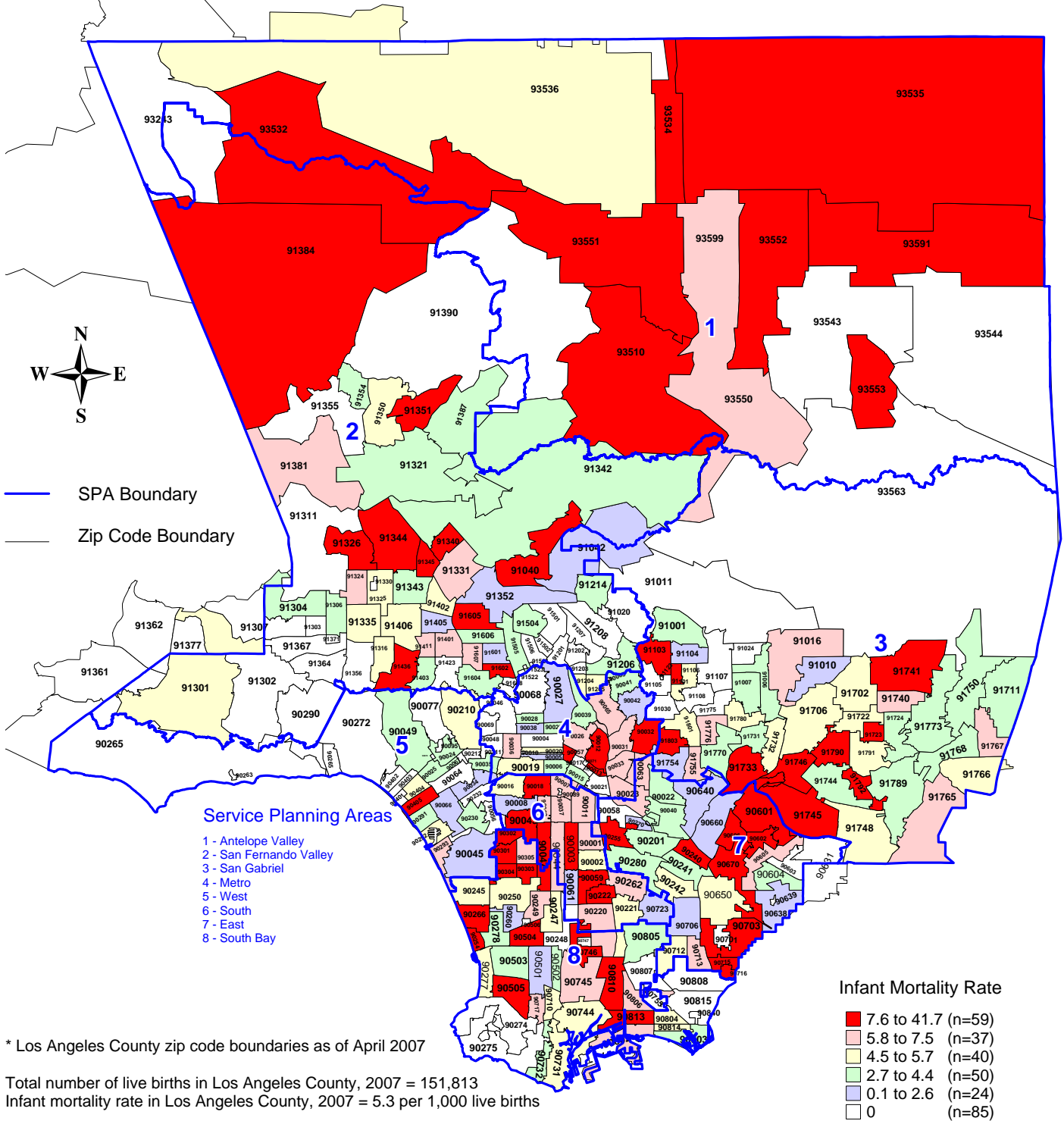
Note: Infant death is defined as death occurring at less than 365 days of age

Source: California Department of Health Services
 Center for Health Statistics, Vital Statistics, 2007

n = total number of zip codes in range

Infant Mortality Rate by Zip Code* and Service Planning Area (SPA)

Los Angeles County, 2007



* Los Angeles County zip code boundaries as of April 2007

Total number of live births in Los Angeles County, 2007 = 151,813
 Infant mortality rate in Los Angeles County, 2007 = 5.3 per 1,000 live births

Note: Infant mortality rate is defined as death occurring at less than 365 days of age per 1,000 live births

HP2010 objective: Reduce infant mortality rate to no more than 4.5 per 1,000 live births

Source: California Department of Health Services
 Center for Health Statistics, Vital Statistics, 2007

n = total number of zip codes in range

TITLE V INDICATOR TEMPLATE

INDICATOR: Neonatal Mortality Rate

DEFINITION: The number of infant deaths occurring at less than 28 days of age per 1,000 live births

NUMERATOR: The number of infant deaths occurring at less than 28 days of age, by place of residence, in a calendar year

DENOMINATOR: The total number of live births, by place of residence, in a calendar year

HEALTHY PEOPLE 2010 OBJECTIVE:

Reduce the neonatal mortality rate to no more than 2.9 per 1,000 live births.
(Baseline: 4.8 per 1,000 live births in 1998) (Objective 16-1d)

RISK FACTORS: Congenital anomalies; respiratory distress syndrome; short gestation; low birth weight; maternal complications; race/ethnicity (African American, Puerto Rican)

See also risk factors for infant mortality.

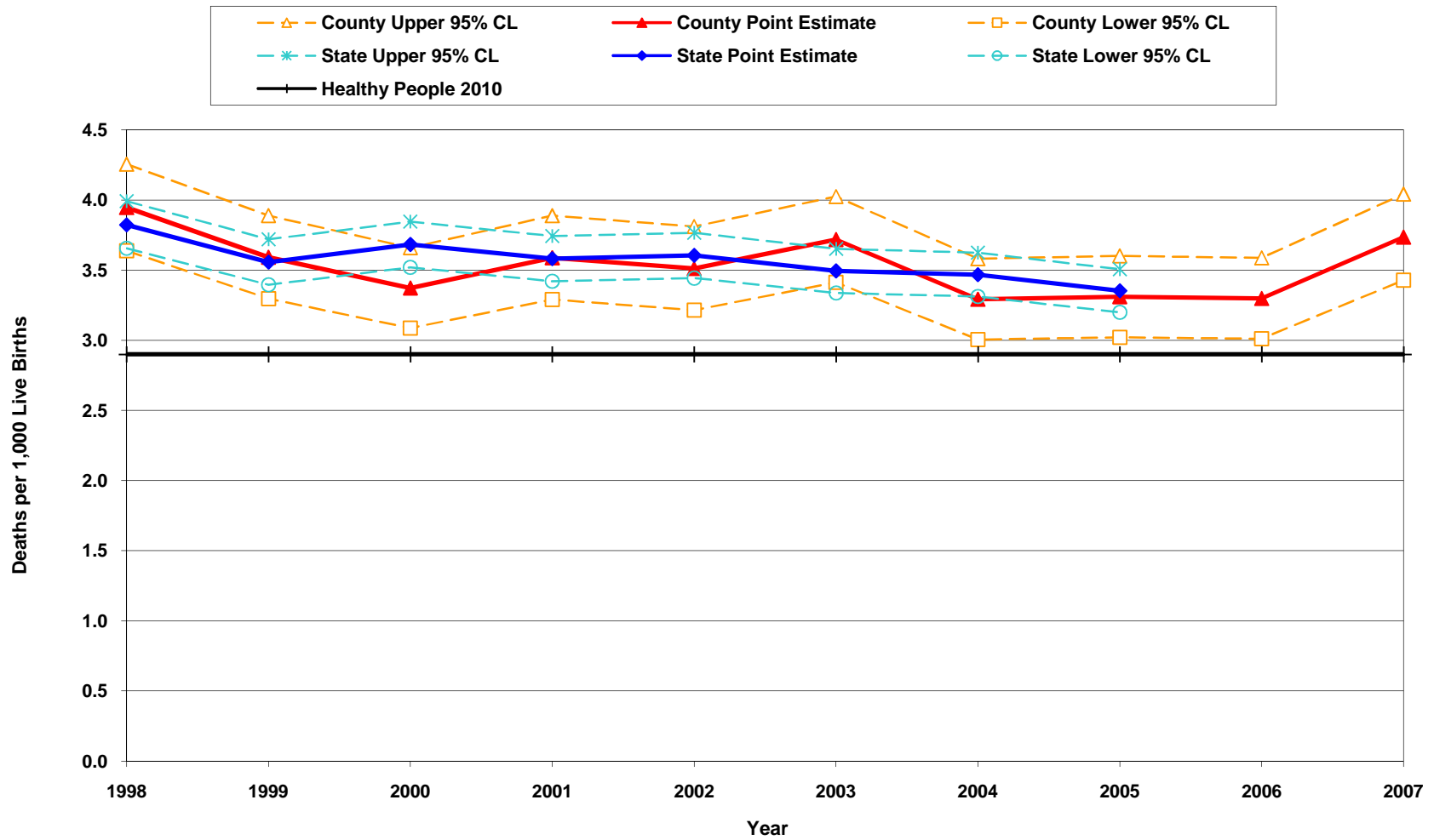
Year	California				Los Angeles County			
	Neonatal Mortality		95% Confidence Interval		Neonatal Mortality		95% Confidence Interval	
	Deaths	Rate	Lower	Upper	Deaths	Rate	Lower	Upper
1998	1,993	3.8	3.7	4.0	626	3.9	3.6	4.3
1999	1,843	3.6	3.4	3.7	561	3.6	3.3	3.9
2000	1,957	3.7	3.5	3.8	531	3.4	3.1	3.7
2001	1,889	3.6	3.4	3.7	551	3.6	3.3	3.9
2002	1,908	3.6	3.4	3.8	531	3.5	3.2	3.8
2003	1,890	3.5	3.3	3.7	566	3.7	3.4	4.0
2004	1,889	3.5	3.3	3.6	499	3.3	3.0	3.6
2005	1,840	3.4	3.2	3.5	498	3.3	3.0	3.6
2006	N/A	N/C	N/C	N/C	501	3.3	3.0	3.6
2007	N/A	N/C	N/C	N/C	567	3.7	3.4	4.0

Denominator: Live Births		
Year	California	LA County
1998	521,265	158,604
1999	518,073	156,153
2000	531,285	157,391
2001	527,371	153,523
2002	529,245	151,167
2003	540,827	152,192
2004	544,685	151,504
2005	548,700	150,377
2006	562,157	151,837
2007	566,137	151,813

Source: California Department of Public Health, Center for Health Statistics, OHIR Vital Statistics Section, 1998-2007.

N/A Not available
N/C Not calculated

Neonatal Deaths per 1,000 Live Births California vs. Los Angeles County, 1998-2007

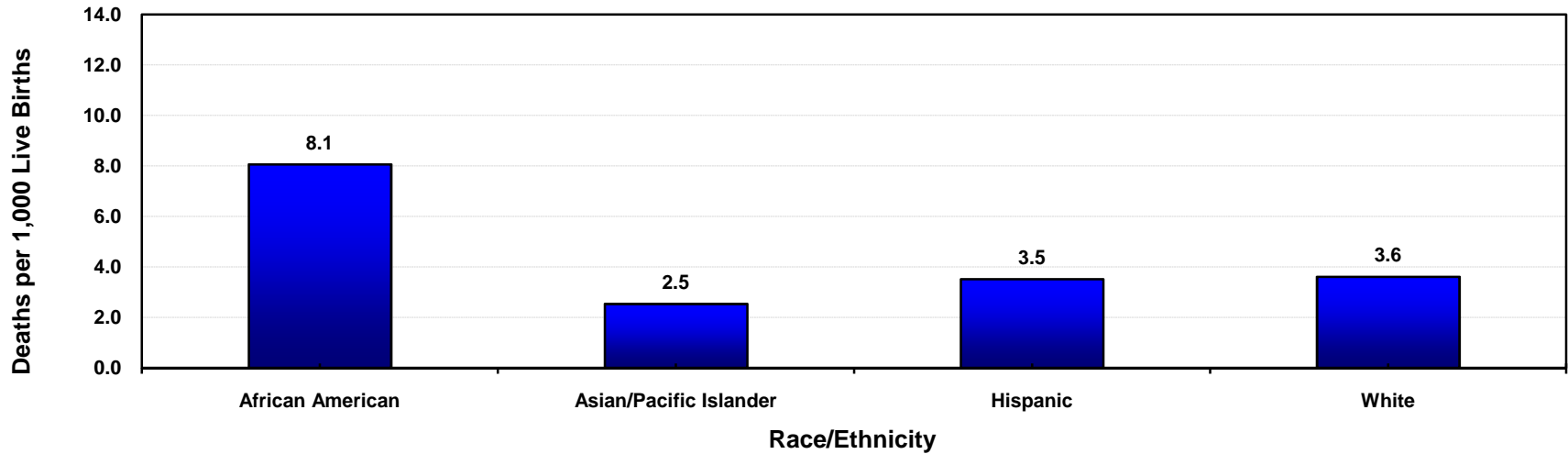


Year 2010 Objective: Reduce the neonatal mortality rate to no more than 2.9 per 1,000 live births.

Source: California Department of Public Health, Center for Health Statistics, OHIR Vital Statistics Section, 1998-2007.

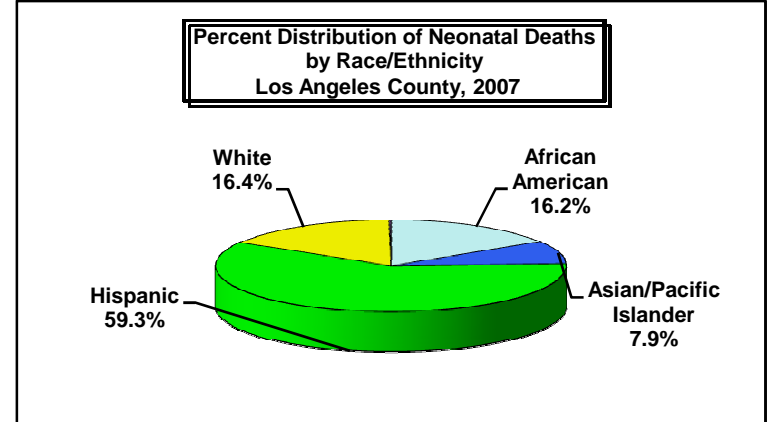
* State data not available in 2006 and 2007

Neonatal Mortality Rate by Race/Ethnicity Los Angeles County, 2007



Los Angeles County, 2007				
Race/Ethnicity	Neonatal Mortality		95% Confidence Interval	
	Deaths	Rate	Lower	Upper
African American	92	8.1	6.4	9.7
Asian/Pacific Islander	45	2.5	1.8	3.3
Hispanic	336	3.5	3.1	3.9
Native American	0	N/C	N/C	N/C
White	93	3.6	2.9	4.3
Other/Unknown	1	N/C	N/C	N/C
Total	567	3.7	3.4	4.0

Total Live Births
11,406
17,769
95,686
0
25,758
958
151,813



Year 2010 Objective: Reduce the neonatal mortality rate to no more than 2.9 per 1,000 live births.

Note: Neonatal mortality rate is defined as infant deaths occurring less than 28 days per 1,000 live births.

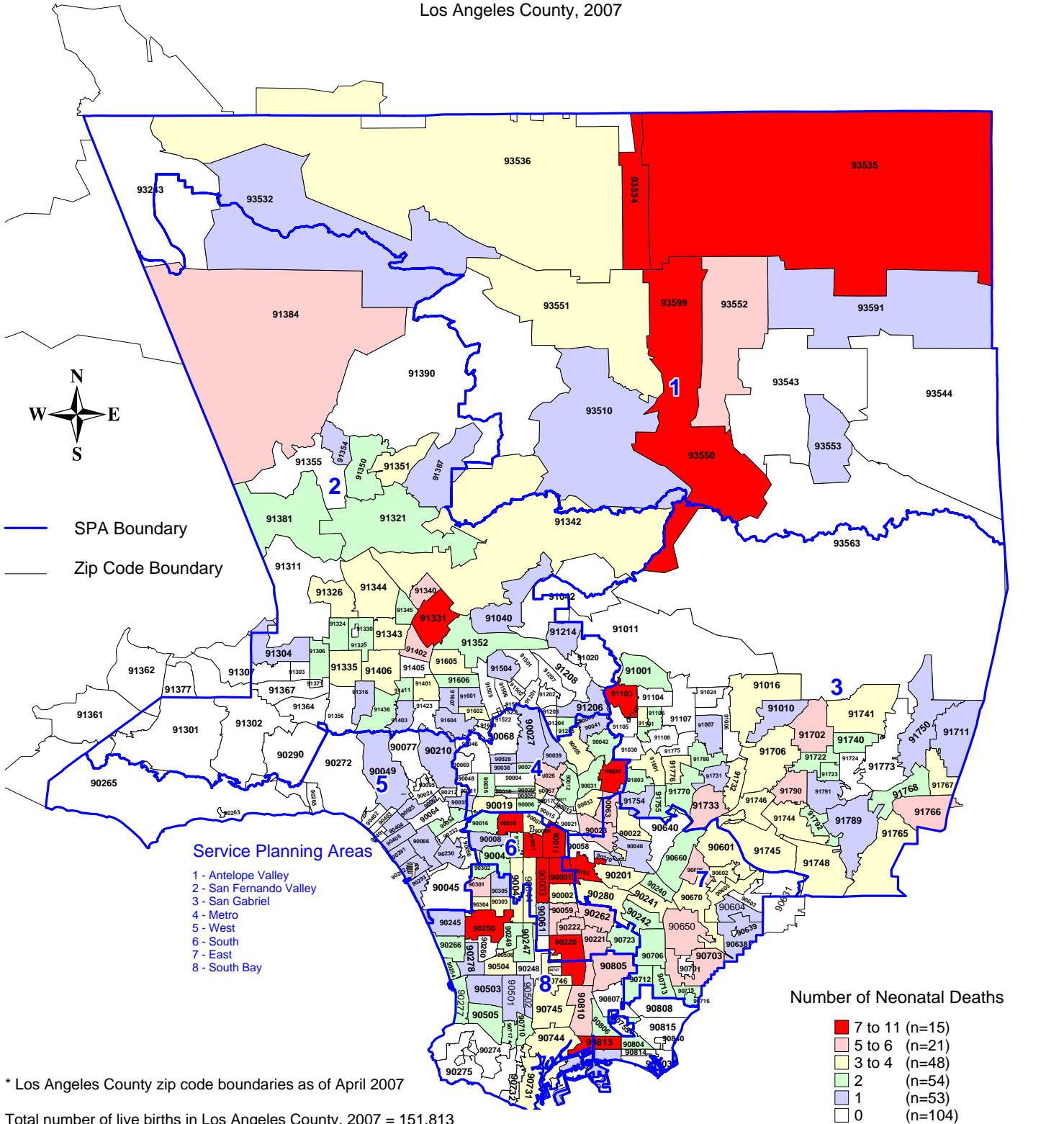
African American, Asian/Pacific Islander, Native American, White and other races exclude Hispanic ethnicity. Hispanic includes any race category.

Rates are not calculated (N/C) if fewer than five deaths.

Source: California Department of Public Health, Center for Health Statistics, OHIR Vital Statistics Section, 2007.

Number of Neonatal Deaths by Zip Code* and Service Planning Area (SPA)

Los Angeles County, 2007



* Los Angeles County zip code boundaries as of April 2007

Total number of live births in Los Angeles County, 2007 = 151,813
 Total number of neonatal deaths in Los Angeles County, 2007 = 567

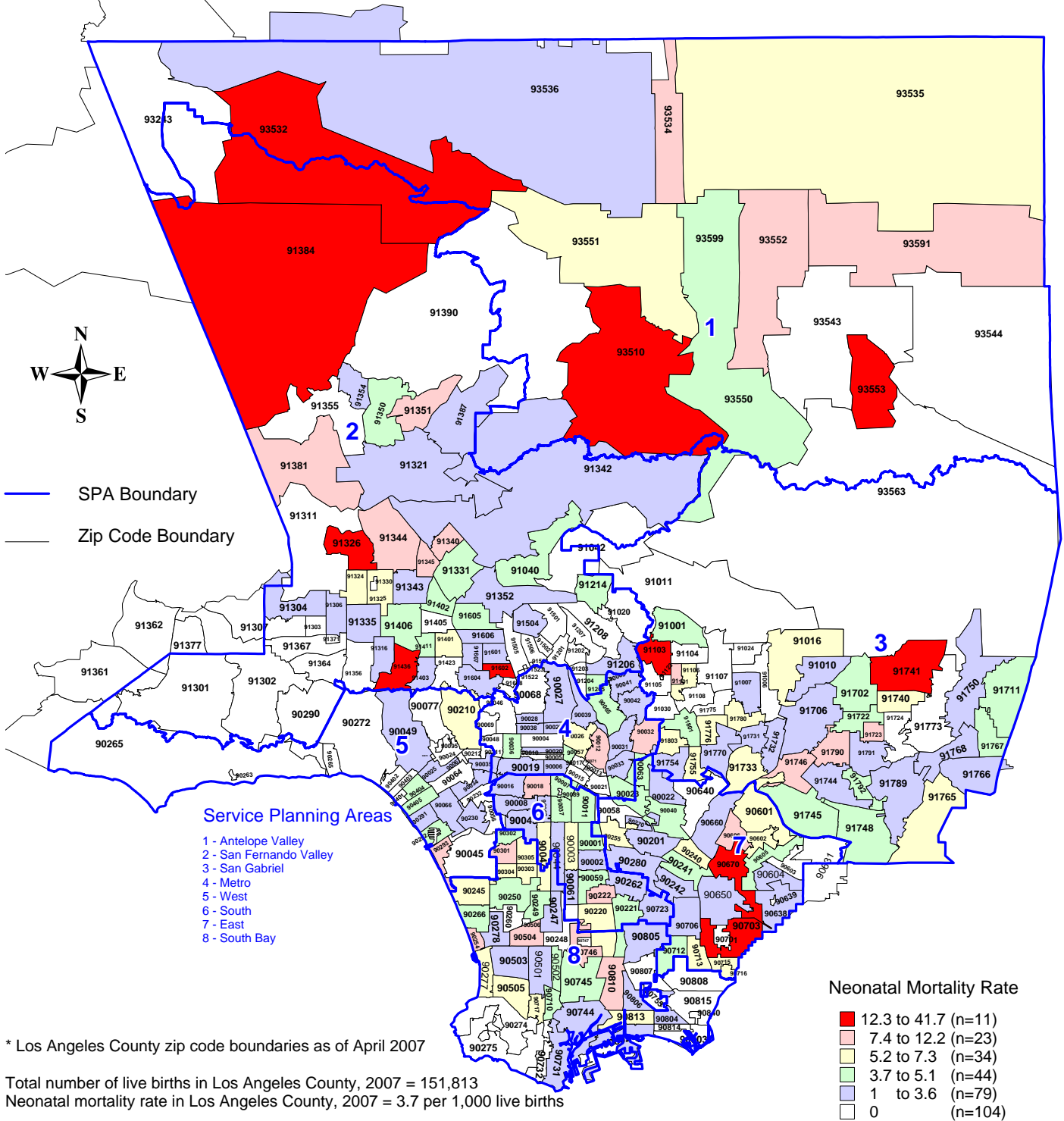
Note: Neonatal death is defined as death occurring at less than 28 days of age

Source: California Department of Health Services
 Center for Health Statistics, Vital Statistics, 2007

n = total number of zip codes in range

Neonatal Mortality Rate by Zip Code* and Service Planning Area (SPA)

Los Angeles County, 2007



* Los Angeles County zip code boundaries as of April 2007

Total number of live births in Los Angeles County, 2007 = 151,813
 Neonatal mortality rate in Los Angeles County, 2007 = 3.7 per 1,000 live births

Note: Neonatal mortality rate is defined as death occurring at less than 28 days of age per 1,000 live births

HP2010 Objective: Reduce the neonatal mortality rate to no more than 2.9 per 1,000 live births

Source: California Department of Health Services
 Center for Health Statistics, Vital Statistics, 2007

n = total number of zip codes in range

TITLE V INDICATOR TEMPLATE

INDICATOR: Post-Neonatal Mortality Rate

DEFINITION: The number of infant deaths occurring from 28 through 364 days of age per 1,000 live births

NUMERATOR: The number of infant deaths occurring from 28 through 364 days of age, by place of residence, in a calendar year

DENOMINATOR: The total number of live births, by place of residence, in a calendar year

HEALTHY PEOPLE 2010 OBJECTIVE:

Reduce the post-neonatal mortality rate to no more than 1.2 per 1,000 live births.
(Baseline: 2.4 per 1,000 live births in 1998) (Objective 16-1e)

RISK FACTORS: Congenital anomalies; injuries; infection in late pregnancy; family history of SIDS; maternal smoking or drug use; young maternal age (teen births); race/ethnicity (African American, Puerto Rican)

See also risk factors for infant mortality.

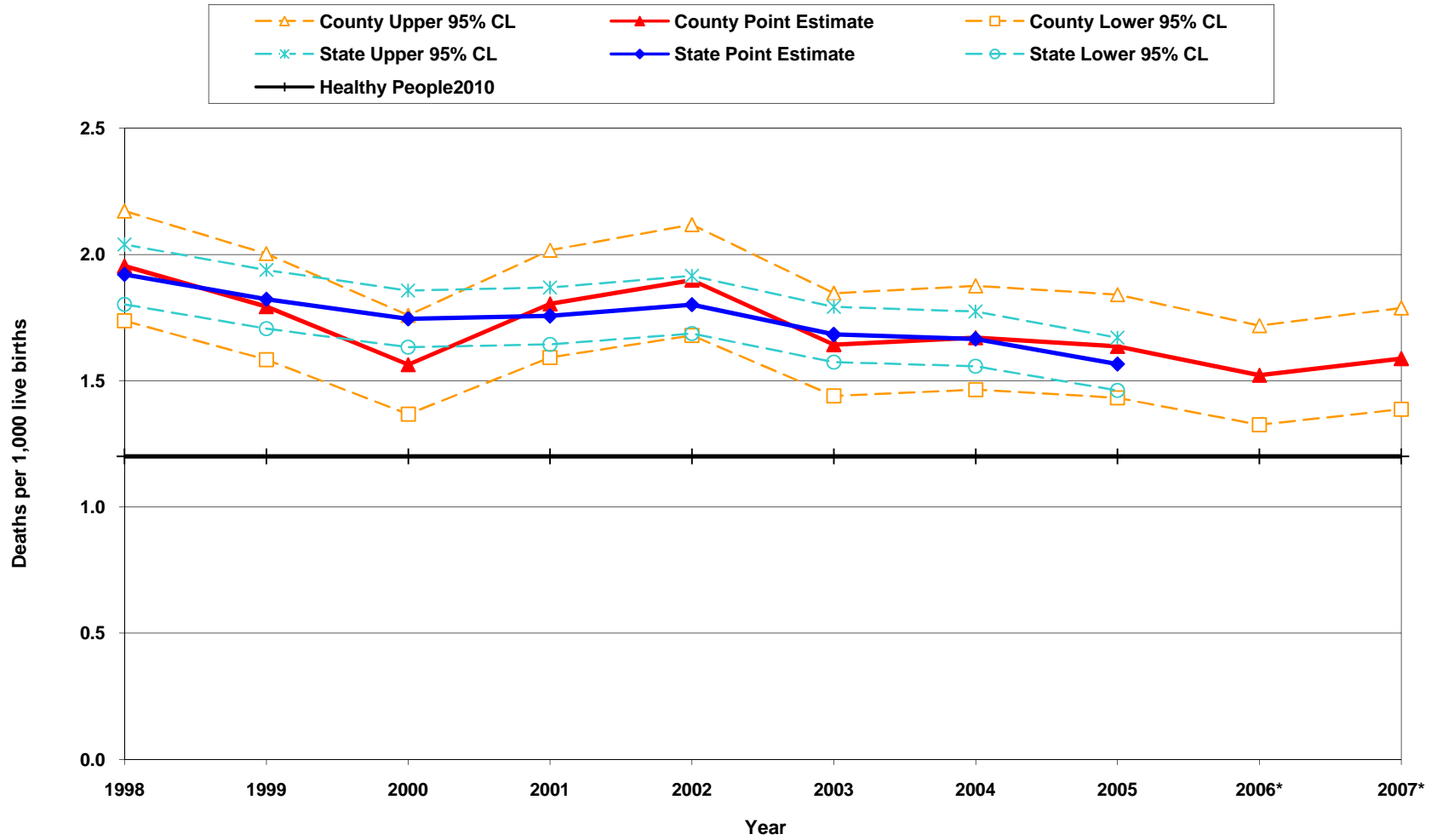
Year	California				Los Angeles County			
	Post-Neonatal Mortality		95% Confidence Interval		Post-Neonatal Mortality		95% Confidence Interval	
	Deaths	Rate	Lower	Upper	Deaths	Rate	Lower	Upper
1998	1,001	1.9	1.8	2.0	310	2.0	1.7	2.2
1999	944	1.8	1.7	1.9	280	1.8	1.6	2.0
2000	927	1.7	1.6	1.9	246	1.6	1.4	1.8
2001	926	1.8	1.6	1.9	277	1.8	1.6	2.0
2002	953	1.8	1.7	1.9	287	1.9	1.7	2.1
2003	910	1.7	1.6	1.8	250	1.6	1.4	1.8
2004	907	1.7	1.6	1.8	253	1.7	1.5	1.9
2005	859	1.6	1.5	1.7	246	1.6	1.4	1.8
2006*	N/A	N/C	N/C	N/C	231	1.5	1.3	1.7
2007*	N/A	N/C	N/C	N/C	241	1.6	1.4	1.8

Denominator: Live Births		
Year	California	LA County
1998	521,265	158,604
1999	518,073	156,153
2000	531,285	157,391
2001	527,371	153,523
2002	529,245	151,167
2003	540,827	152,192
2004	544,685	151,504
2005	548,700	150,377
2006*	562,157	151,837
2007*	566,137	151,813

Source: California Department of Public Health, Center for Health Statistics, OHIR Vital Statistics Section, 1998-2007.

N/A Not available
N/C Not calculated

Post-Neonatal Deaths per 1,000 Live Births California vs. Los Angeles County, 1998-2007*

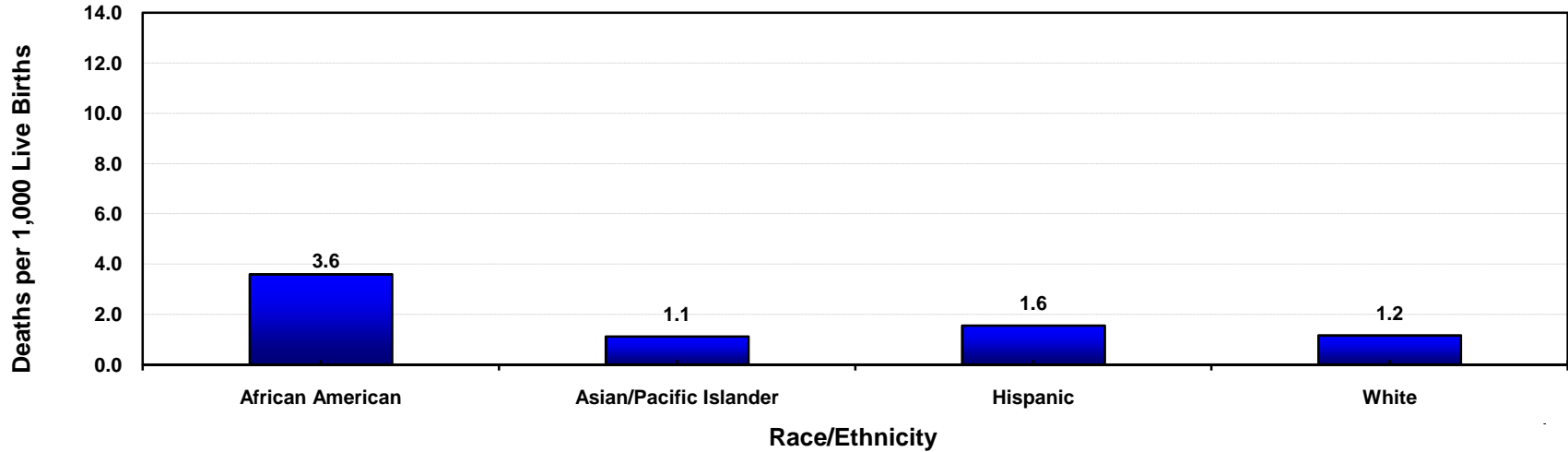


Year 2010 Objective: Reduce the neonatal mortality rate to no more than 1.2 per 1,000 live births.

Source: California Department of Public Health, Center for Health Statistics, OHIR Vital Statistics Section, 1998-2007.

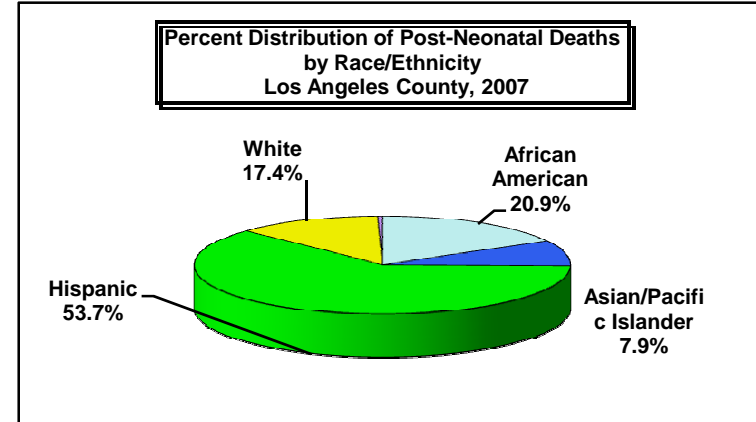
* State Data not available

Post-Neonatal Mortality Rate by Race/Ethnicity Los Angeles County, 2007



Los Angeles County, 2007				
Race/Ethnicity	Post-Neonatal Mortality		95% Confidence Interval	
	Deaths	Rate	Lower	Upper
African American	41	3.6	2.5	4.7
Asian/Pacific Islander	20	1.1	0.6	1.6
Hispanic	149	1.6	1.3	1.8
Native American	0	N/C	N/C	N/C
White	30	1.2	0.7	1.6
Other/Unknown	1	N/C	N/C	N/C
Total	241	1.6	1.4	1.8

Total Live Births
11,406
17,769
95,686
236
25,758
958
151,813



Year 2010 Objective: Reduce the post-neonatal mortality rate to no more than 1.2 per 1,000 live births.

Note: Post-neonatal mortality rate is defined as infant deaths occurring from 28 through 364 days of age per 1,000 live births.

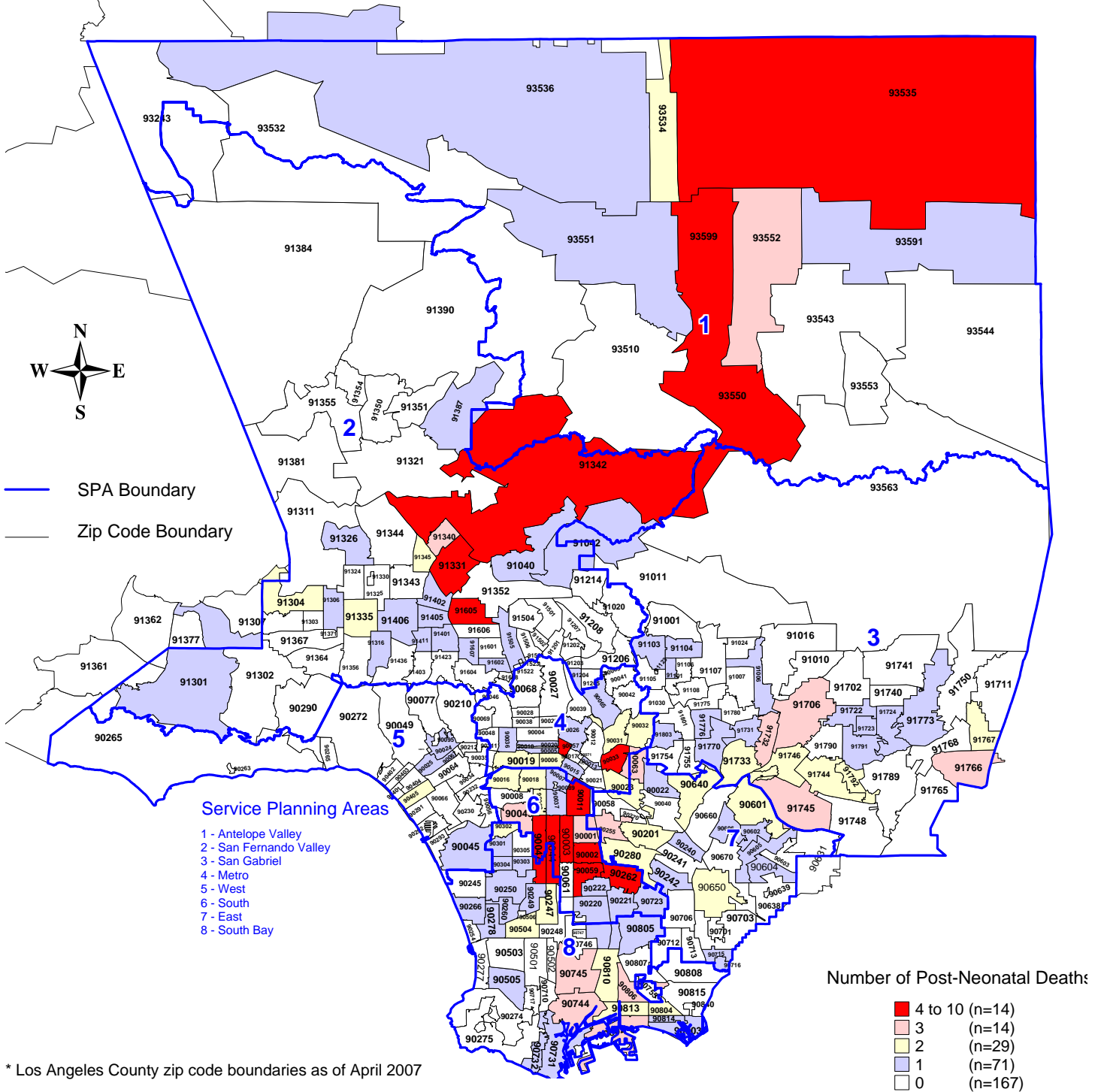
African American, Asian/Pacific Islander, Native American, White and other races exclude Hispanic ethnicity. Hispanic includes any race category.

Rates are not calculated (N/C) if fewer than five deaths.

Source: California Department of Public Health, Center for Health Statistics, OHIR Vital Statistics Section, 2007.

Number of Post-Neonatal Deaths by Zip Code* and Service Planning Area (SPA)

Los Angeles County, 2007



* Los Angeles County zip code boundaries as of April 2007

Total number of live births in Los Angeles County, 2007 = 151,813
 Total number of post-neonatal deaths in Los Angeles County, 2007 = 241

Note: Post-neonatal death is defined as death occurring between 28 and 365 days of age

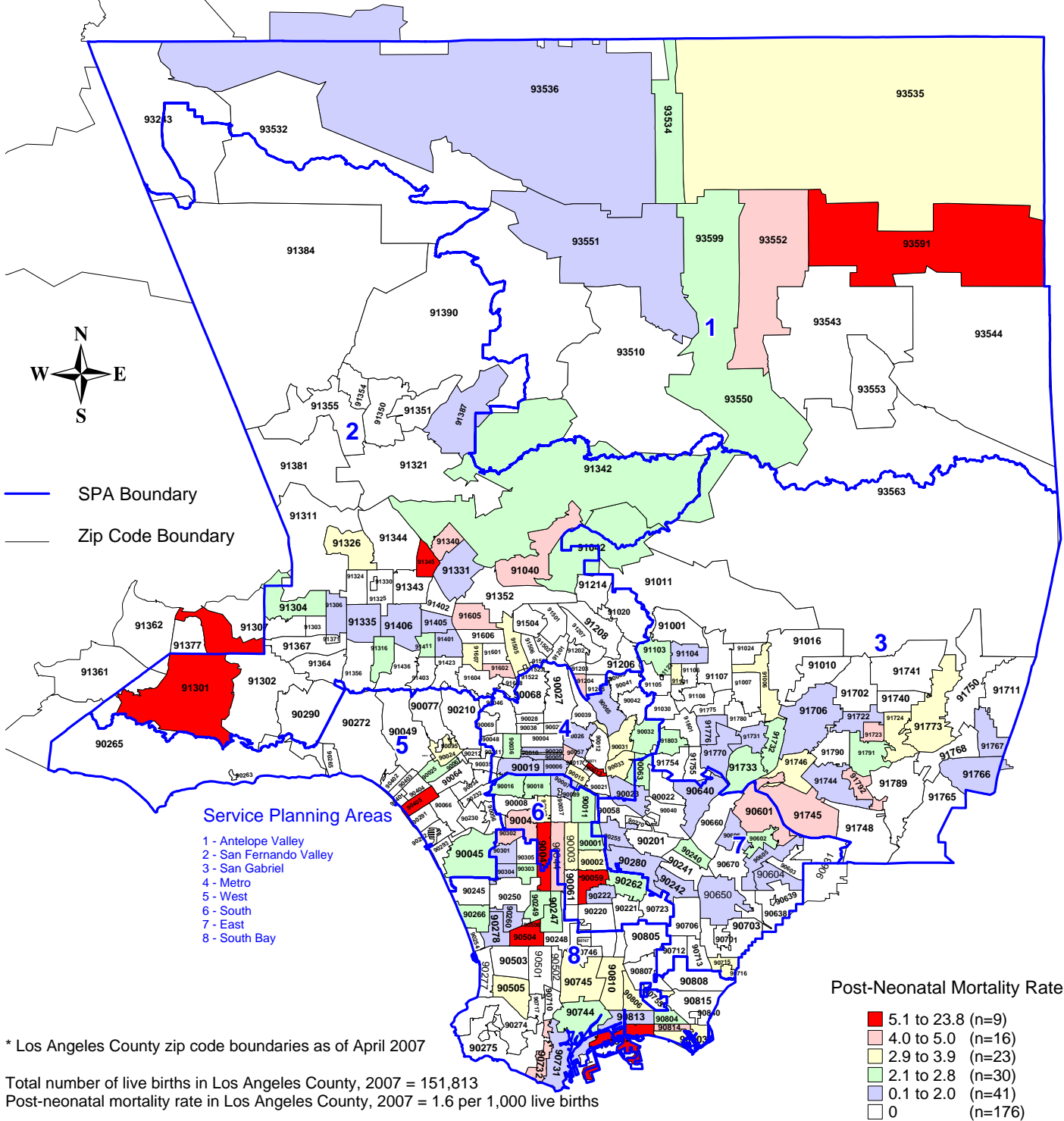
Source: California Department of Health Services
 Center for Health Statistics, Vital Statistics, 2007



n = total number of zip codes in range

Post-Neonatal Mortality Rate by Zip Code* and Service Planning Area (SPA)

Los Angeles County, 2007



* Los Angeles County zip code boundaries as of April 2007

Total number of live births in Los Angeles County, 2007 = 151,813
 Post-neonatal mortality rate in Los Angeles County, 2007 = 1.6 per 1,000 live births

Note: Post-neonatal mortality rate is defined as death occurring between 28 and 365 days of age per 1,000 live births

HP2010 Objective: Reduce the post-neonatal mortality rate to no more than 1.2 per 1,000 live births

Source: California Department of Health Services
 Center for Health Statistics, Vital Statistics, 2007

n = total number of zip codes in range