

Los Angeles County Department of Public Health

2011 - 2012 Influenza Campaign Report

A summary of Influenza doses administered in the 2011-2012 Influenza Campaign

Los Angeles County Department Of Public Health, Immunization Program



Background

In 2010, the Advisory Committee on Immunization Practices (ACIP) first recommended annual influenza vaccination for all persons aged ≥ 6 months in the United States. Publicly funded influenza vaccine from the California Department of Public Health and purchased by LAC are distributed by the Los Angeles County Immunization Program (LACIP) to public clinics and community and free clinics who agree to hold public clinics. All other healthcare providers must purchase vaccine directly from the vaccine manufacturer for their patients and these data are not presented in this report.

Methods

Collected Data

In addition to injectable vaccine, LACIP distributed intranasal influenza vaccine. Intranasal vaccine is licensed for use only in healthy, non-pregnant persons aged 2 through 49 years.

Participating healthcare providers immunized persons either in their clinic or during outreach programs (i.e., non-healthcare settings).

Vaccine availability and the number of doses of vaccine used by the provider in previous years determined the amount of influenza vaccine each healthcare provider received from LACIP.

Vaccination data were entered into the California Immunization Registry (CAIR) for Public Health Outreach and In-House vaccine administration, as well as DHS and other providers with access to CAIR.

For publicly funded vaccine doses administered in an outreach setting by community health providers who were unable to enter data into CAIR, vaccine accountability forms were distributed to each healthcare provider. Optical Character Recognition (OCR) was used for data capture.

The following data elements were standardized across all providers:

- Healthcare provider name and Service Planning Area (SPA)
- Type of vaccine (Inactivated, Inactivated P-Free, Attenuated) administered at the activity
- Date of vaccine administration
- Age
- In outreach settings only: ethnicity, presence of medical conditions, and pregnancy status of vaccine recipient for every dose administered

Summary Highlights

Total Influenza Doses = 61,482

Vaccinated Clients' Race and Ethnicity Highlights

Race and ethnicity data are available for 21,232 vaccine doses administered at Public Health Outreach Clinics during the 2011 – 2012 Influenza Campaign.

- Hispanic vaccine recipients comprised the majority (n=8,829 doses; 42%) of the population receiving influenza vaccine at Public Health Outreach Clinics. This is consistent with previous years. Blacks and American Indian / Alaskan Native (AI/AN) received the smallest proportions of vaccine administered during clinics.
- The percentage of flu doses administered to Whites has continued to decline in the past 7 seasons (See Figure 2) from 38% to 18%. Asian / Pacific Islander recipients, as a percentage of total doses, has increased over time (Figure 2) from 18% to 31%.

Vaccinated Clients' Age Highlights

Age distribution data are available for Public Health Outreach and In-House Clinics during the 2011 – 2012 Influenza Campaign.

- At Public Health Outreach clinics, recipients 60 years and older, as a percentage of total doses, increased slightly from the 2010 – 2011 campaign (32% to 34%) and recipients 19 to 49 years of age, as a percentage of total doses, remained level at 33% after a steady increase since 2003 - 2004.
- At Public Health Outreach clinics, the percentage of recipients 19 to 49 years of age receiving vaccine (n=7,039 doses; 33.2%) remained similar to that of recipients 60 years and older receiving vaccine (n=7,242 doses; 34.1%).
- The age distribution of clients at Public Health In-House Clinics, except those 19 to 49 years of age, was notably different from Public Health Outreach clinics: Under 5 years: 7% (In-House) vs. 1% (Outreach); 5 to 18 years: 29% (In-House) vs. 12% (Outreach); 19 to 49 years: 32% (In-House) vs. 33% (Outreach); 50 to 59 years: 15% (In-House) vs. 20% (Outreach); and 60 + years: 17% (In-House) vs. 34% (Outreach).

Location of Vaccination Clinics Service Planning Area (SPA) Highlights

The amount of vaccine administered in each SPA is determined by the location of the provider administering the vaccine, not the residence of the vaccine recipients. All clinic and provider types are included in the highlight.

- Only in SPA 1 did the proportion of the total influenza vaccine administered during the 2011-2012 campaign remain approximately the same when compared to the average of previous campaigns (See Figure 4). SPA 1: Average 3% and 5% for current year.
- SPA 2, SPA 3, SPA 7, and SPA 8 experienced a decrease in the proportion of the total influenza vaccine administered during the 2011-2012 campaign compared to the average of previous campaigns (See Figure 4). SPA 2: Average 23% and 18% for current year. SPA 3: Average 22% and 17% for the current year. SPA 7: Average 11% and 7% for the current year. SPA 8: Average 11% and 7% for the current year.
- SPAs 4, 5, and 6 experienced an increase in the proportion of the total influenza vaccine administered during the 2011-2012 campaign compared to the average of previous campaigns. (See Figure 4). SPA 4: Average 17% and 20% for current year. SPA 5: Average 5% and 10% for current year. SPA 6: Average 7% and 16% for current year.
- Intranasal vaccine was administered during the 2011 – 2012 influenza campaign (n=4,901; See Figure 1). The majority of the intranasal vaccine 67% (n=3,280 doses) was administered by Public Health providers (Outreach and In-House). This is a decrease from the 2010 – 2011 Influenza Campaign when Public Health providers administered 73% of intranasal vaccine.

Vaccinated Clients' Medical and Pregnancy Highlights

Medical condition and pregnancy information was only collected at outreach clinics held by Public Health and community health providers during the 2011 – 2012 Influenza Campaign.

- Of the 25,597 influenza doses administered, 4.4% (n=1,116) were given to those with self reported medical conditions (Heart, lung, kidney, liver or neurological disease; cancer; diabetes; blood disorder; immune system disorder). This is lower than the 2010 – 2011 Influenza Campaign (13.3%).
- Of the 25,597 influenza doses administered, 55.3% (n=14,156) were given to females. Of these women, 0.4% (n=58) indicated they were pregnant. This is similar to the 2010 – 2011 Influenza Campaign.

Results

- I. Publicly-Funded Influenza Doses (Inactivated and Live) Administered During the 2011-2012 Influenza Season, by Clinic/Provider Type and Service Planning Area (SPA).
- II. Administration of intranasal influenza vaccine during the 2011-2012 campaign, by provider type
- III. Ethnic distribution of persons receiving influenza vaccine from public health outreach clinics.
- IV. Age distribution of persons receiving influenza vaccine from public health outreach clinics.
- V. Proportion of total influenza vaccine administered in each SPA, by campaign year.

Publicly-Funded Influenza Doses (Inactivated and Live)
Administered During the 2011-2012 Influenza Season,
by Clinic/Provider Type and Service Planning Area (SPA)

SPA	Clinic/Provider Type	Flu Doses Administered N (%)	0 – 18 Years Of Age N (%)	19 + Years Of Age N (%)
TOTAL	Public Health Outreach	21,232 (35%)	2,643 (21%)	18,589 (38%)
	Public Health In-House	9,258 (15%)	3,328 (26%)	5,930 (12%)
	Department of Health Services (DHS)/Comprehensive Health Centers (CHC)	5,190 (8%)	716 (6%)	4,474 (9%)
	School Based Clinics Vaccines For Children (VFC)	2,113 (3%)	1,483 (12%)	630 (1%)
	Community Health Provider	23,689 (39%)	4,715 (37%)	18,974 (39%)
	TOTAL	61,482	12,885	48,597
1	Public Health Outreach	1,257 (40%)	344 (26%)	913 (52%)
	Public Health In-House	1,304 (42%)	912 (68%)	392 (22%)
	DHS/CHC	- (0%)	- (0%)	- (0%)
	School Based Clinics VFC	372 (12%)	75 (6%)	297 (17%)
	Community Health Provider	174 (6%)	10 (1%)	164 (9%)
	SPA 1 TOTAL	3,107	1,341	1,766
2	Public Health Outreach	2,359 (21%)	396 (13%)	1,963 (24%)
	Public Health In-House	1,795 (16%)	502 (17%)	1,293 (16%)
	DHS/CHC	2,225 (20%)	457 (15%)	1,768 (22%)
	School Based Clinics VFC	4 (0%)	4 (0%)	0 (0%)
	Community Health Provider	4,757 (43%)	1,677 (55%)	3,080 (38%)
	SPA 2 TOTAL	11,140	3,036	8,104
3	Public Health Outreach	4,416 (42%)	325 (22%)	4,091 (45%)
	Public Health In-House	2,000 (19%)	519 (36%)	1,481 (16%)
	DHS/CHC	304 (3%)	228 (16%)	76 (1%)
	School Based Clinics VFC	- (0%)	- (0%)	- (0%)
	Community Health Provider	3,828 (36%)	389 (27%)	3,439 (38%)
	SPA 3 TOTAL	10,548	1,461	9,087
4	Public Health Outreach	2,125 (18%)	304 (15%)	1,821 (18%)
	Public Health In-House	632 (5%)	122 (6%)	510 (5%)
	DHS/CHC	- (0%)	- (0%)	- (0%)
	School Based Clinics VFC	247 (2%)	206 (10%)	41 (1%)
	Community Health Provider	8,989 (75%)	1,395 (69%)	7,594 (76%)
	SPA 4 TOTAL	11,993	2,027	9,966



Publicly-Funded Influenza Doses (Inactivated and Live)
Administered During the 2011-2012 Influenza Season,
by Clinic/Provider Type and Service Planning Area (SPA)

SPA	Clinic/Provider Type	Flu Doses Administered (%) N (%)	0 – 18 Years Of Age N (%)	19 + Years Of Age N (%)
5	Public Health Outreach	2,361 (37%)	233 (14%)	2,128 (45%)
	Public Health In-House	747 (12%)	317 (20%)	430 (9%)
	DHS/CHC	- (0%)	- (0%)	- (0%)
	School Based Clinics VFC	1,204 (19%)	933 (58%)	271 (6%)
	Community Health Provider	2,067 (32%)	137 (8%)	1,930 (41%)
	SPA 5 TOTAL		6,379	1,620
6	Public Health Outreach	5,532 (58%)	781 (38%)	4,751 (63%)
	Public Health In-House	1,805 (19%)	574 (28%)	1,231 (16%)
	DHS/CHC	- (0%)	- (0%)	- (0%)
	School Based Clinics VFC	- (0%)	- (0%)	- (0%)
	Community Health Provider	2,241 (23%)	685 (34%)	1,556 (21%)
	SPA 6 TOTAL		9,578	2,040
7	Public Health Outreach	1,883 (43%)	187 (17%)	1,696 (52%)
	Public Health In-House	443 (10%)	249 (23%)	194 (6%)
	DHS/CHC	287 (7%)	0 (0%)	287 (9%)
	School Based Clinics VFC	286 (7%)	265 (24%)	21 (1%)
	Community Health Provider	1,463 (34%)	385 (35%)	1,078 (33%)
	SPA 7 TOTAL		4,362	1,086
8	Public Health Outreach	1,299 (30%)	73 (27%)	1,226 (30%)
	Public Health In-House	532 (12%)	133 (49%)	399 (10%)
	DHS/CHC	2,374 (54%)	31 (11%)	2,343 (57%)
	School Based Clinics VFC	- (0%)	- (0%)	- (0%)
	Community Health Provider	170 (4%)	37 (14%)	133 (3%)
	SPA 8 TOTAL		4,375	274

Data cell notation of '-' indicates clinic type did not administer vaccine.

Due to rounding estimation, totals may not equal 100%.



Figure 1. Administration of intranasal influenza vaccine during the 2011-2012 Influenza Campaign, by provider type (n=4,901).

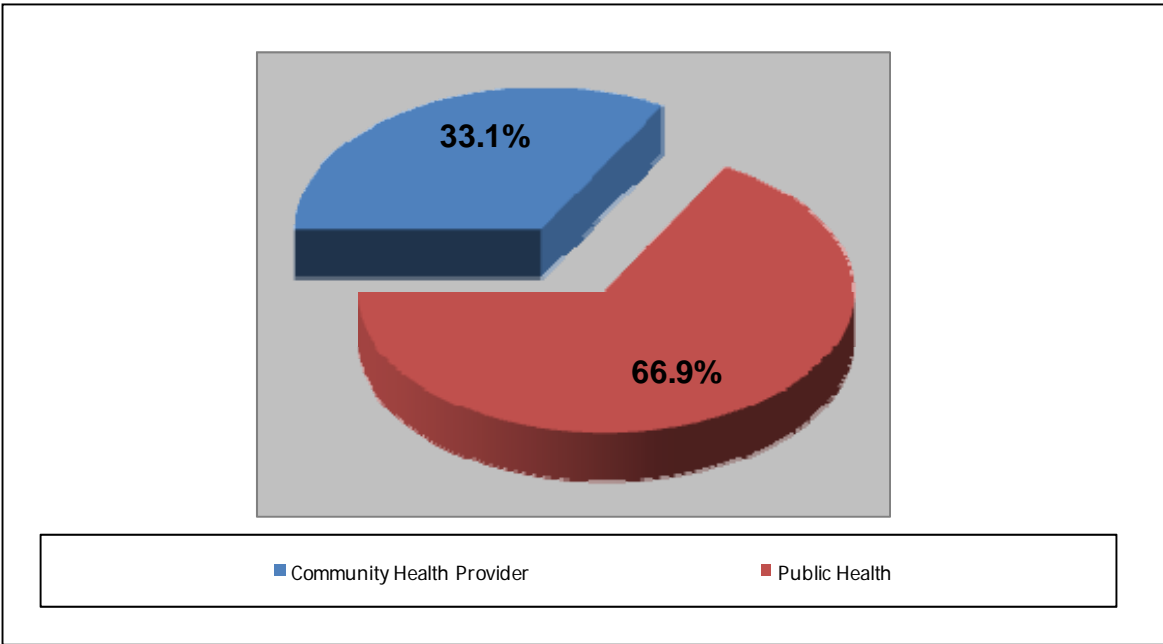


Figure 2. Ethnic distribution of persons receiving influenza vaccine at public health outreach clinics, by influenza campaign year.

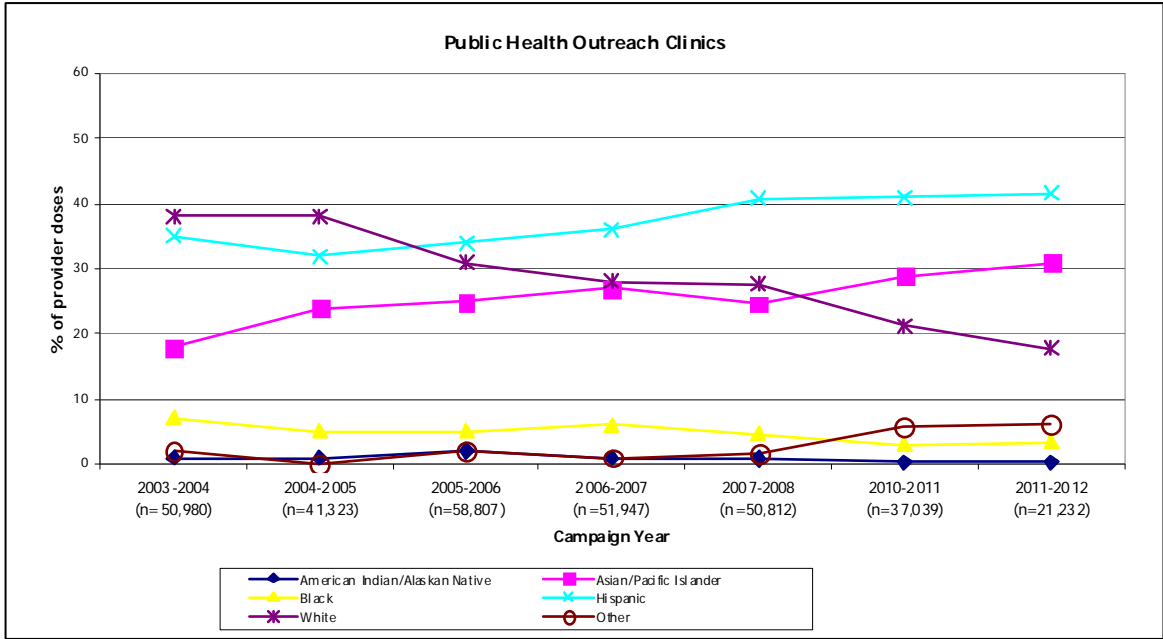


Figure 3. Age distribution of persons receiving influenza vaccine at public health outreach clinics, by influenza campaign year.

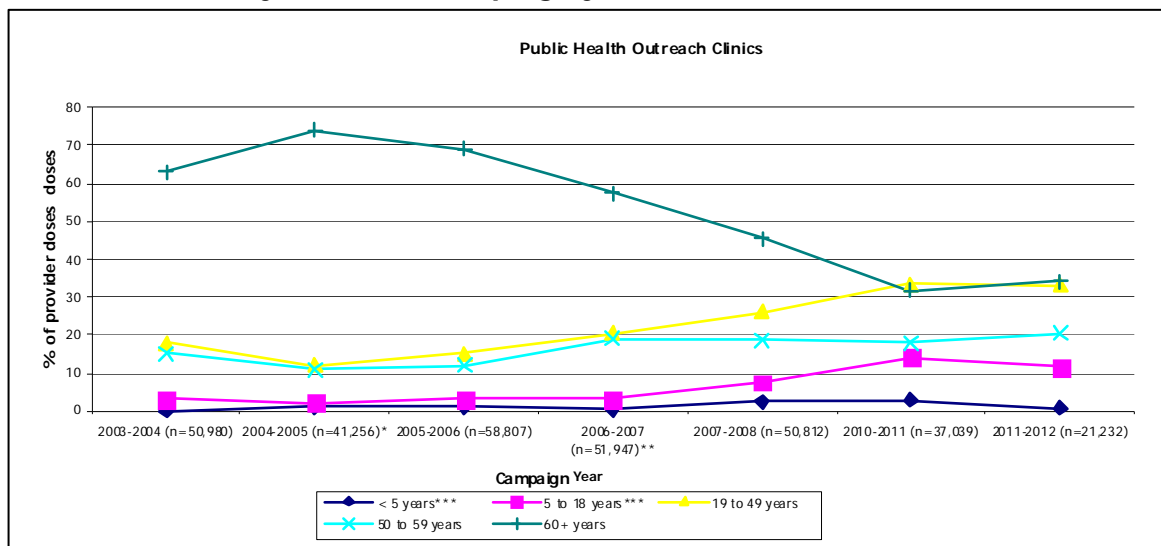
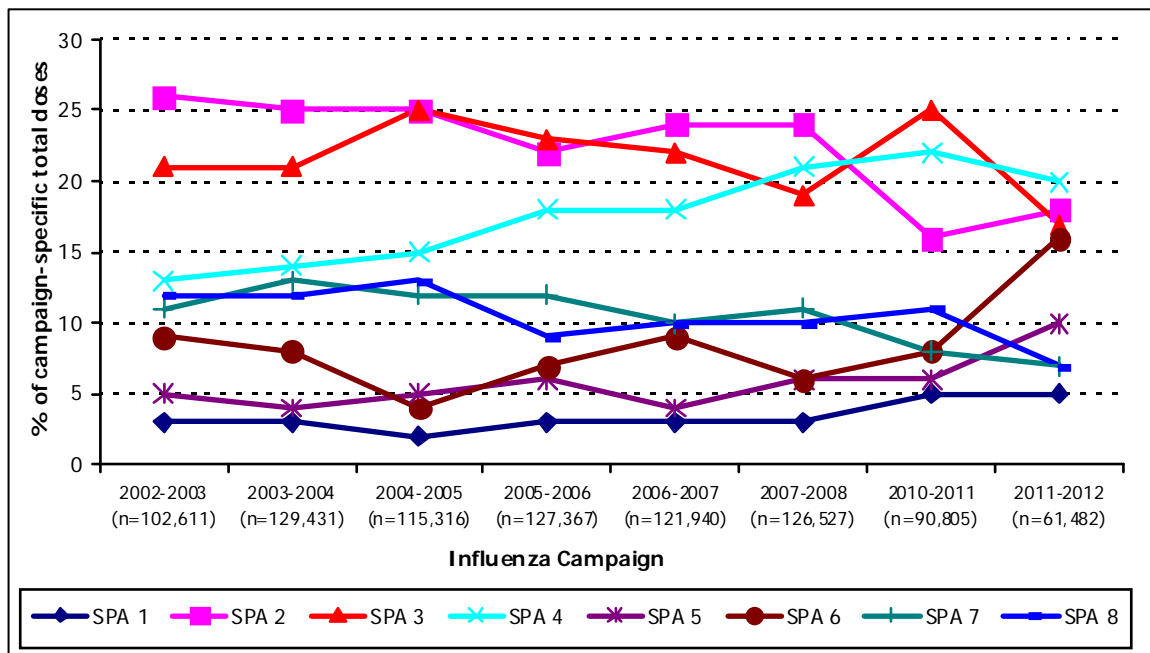


Figure 4. Proportion of total influenza vaccine administered in each SPA, by influenza campaign year.



Doses administered after the 2004-2005 campaign do not include non-Los Angeles County Health Departments.