

# ACTIONS FOR ISOLATION SCHOOL FLOW CHART

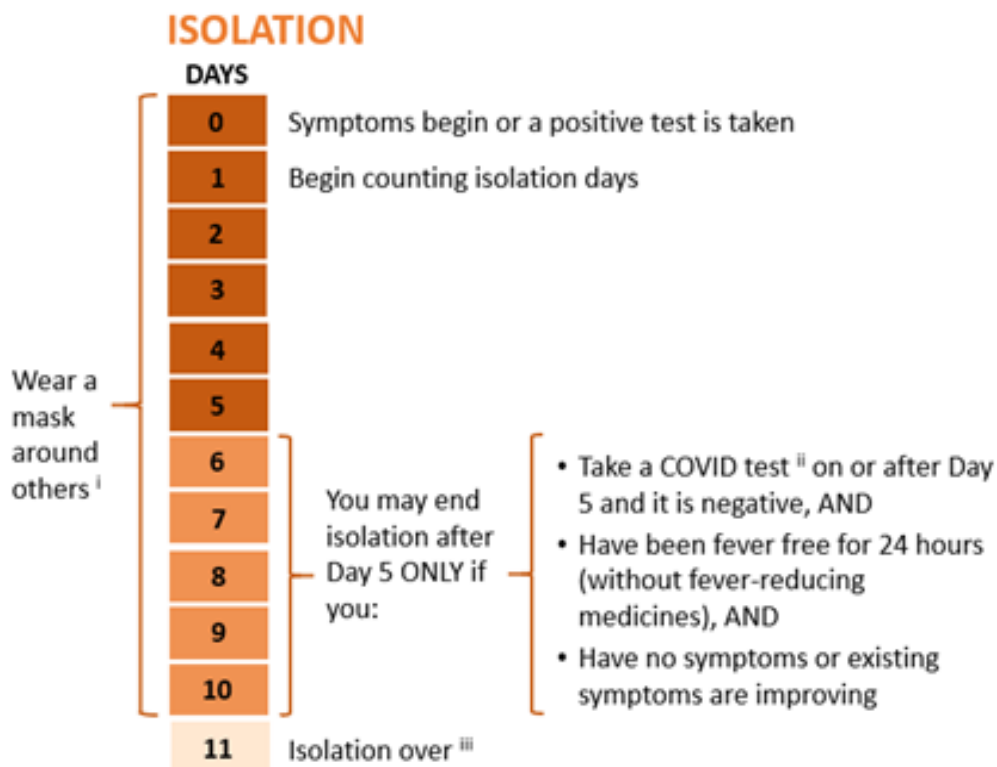
Have you tested positive  
for COVID-19?

no

You do not need  
to isolate

yes

Stay home for at least 5 days, regardless of vaccination status, previous infection, or symptoms.



i. When in isolation, you must wear a highly protective mask around others even in your own home. If you end isolation after Day 5, it is *strongly recommended* that you wear a mask through Day 10. Staff are required to mask through day 10.

ii. Antigen test preferred.

iii. If you still have a fever or your other COVID-19 symptoms are not improving, stay in isolation & talk with your doctor. If you are immunocompromised or had severe COVID-19, you may need to isolate for longer. Talk with doctor about when you can be around others.

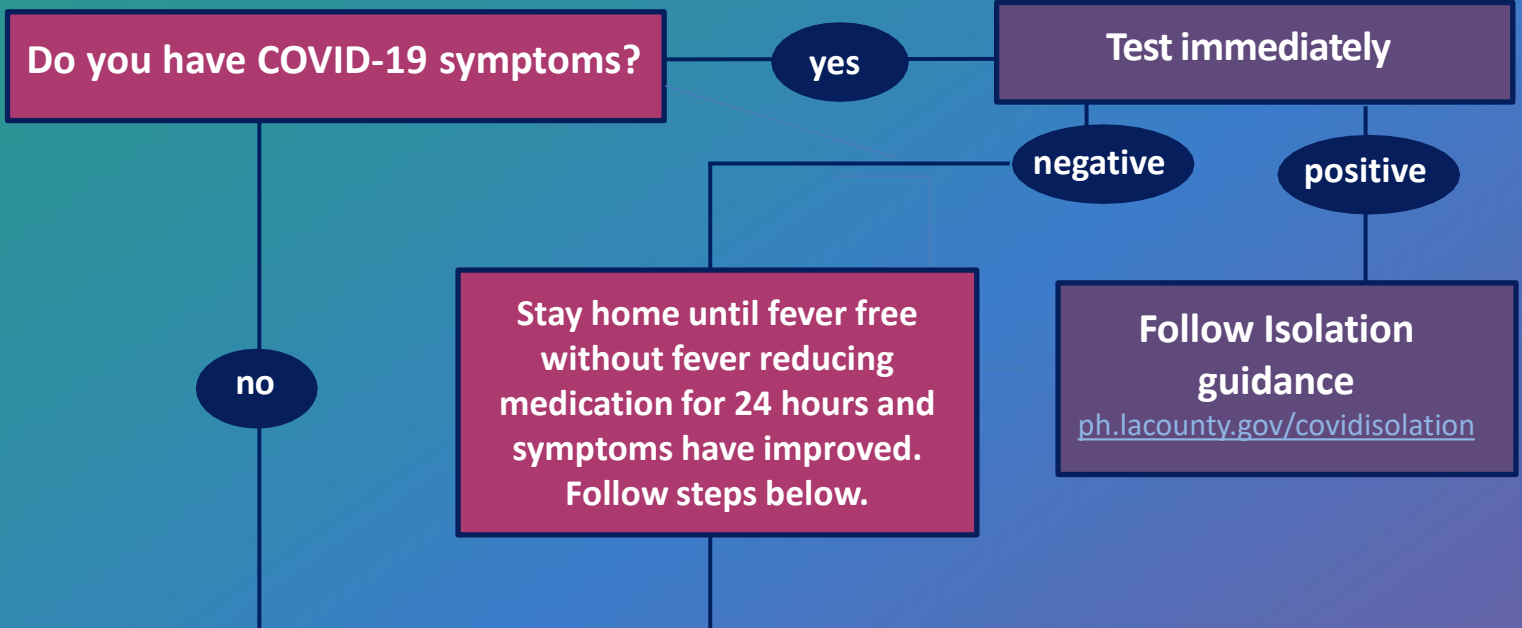
For more information, visit [ph.lacounty.gov/covidisolation](https://ph.lacounty.gov/covidisolation).

- Tell your close contacts that they have been exposed and need to follow instructions at [ph.lacounty.gov/covidcontacts](https://ph.lacounty.gov/covidcontacts)
- See full isolation instructions for people with COVID-19 at [ph.lacounty.gov/covidisolation](https://ph.lacounty.gov/covidisolation)

# ACTIONS FOR CLOSE CONTACTS

## SCHOOL FLOW CHART

In school settings, you are a "close contact" if you shared the same indoor airspace OR were within 6 feet of someone with COVID-19 for a total of 15 minutes or more over a 24-hour period while they were infectious.



**If you are a close contact and do not have symptoms, you DO NOT need to quarantine but are required to take the following steps to reduce the risk of spreading COVID-19 to others.\***

1. **Monitor symptoms** for 10 days. If you develop symptoms, you need to test immediately. If positive, follow isolation guidance at [ph.lacounty.gov/covidisolation](https://ph.lacounty.gov/covidisolation).
2. **Wear a highly protective mask** around others indoors, except when eating or drinking, for 10 days after the last date of exposure. More details at [ph.lacounty.gov/masks](https://ph.lacounty.gov/masks).
3. **Test** with an FDA-authorized viral COVID-19 test (e.g., PCR or Antigen test, including at home tests) within 3-5 days since the last date of exposure.\*\*

\*\*If you had COVID-19 in the past 90 days, you do not need to test unless you develop symptoms.

\*If applying the within 6 ft of an infected person for 15 minutes or more over a 24-hour period definition for close contacts in classrooms or similar-sized settings, all other individuals who shared the same indoor airspace with the infected person for 15 minutes or more over a 24-hour period are strongly recommended to follow the above guidance for symptom monitoring, masking, and testing.

[ph.lacounty.gov/covidcontacts](https://ph.lacounty.gov/covidcontacts)

For more information and to view the latest version, visit: [ph.lacounty.gov/EducationToolkitTK12](https://ph.lacounty.gov/EducationToolkitTK12) 5/19/22



COUNTY OF LOS ANGELES  
**Public Health**